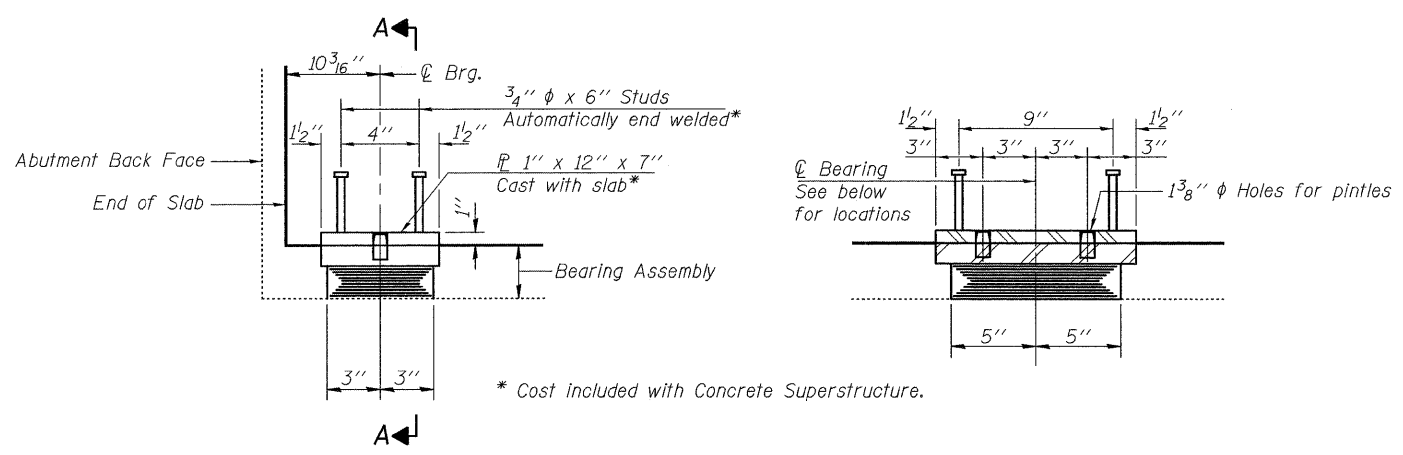


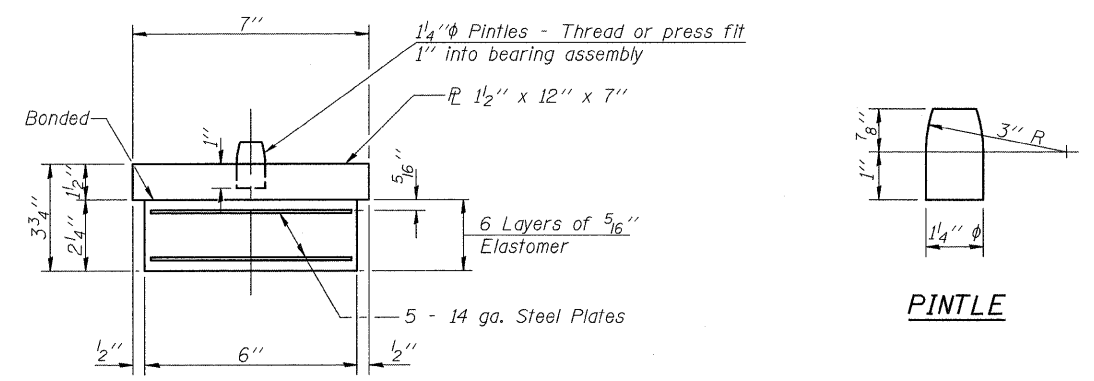
Contract #60D70



ELEVATION AT ABUT.
Dimensions given along \varnothing Brg.

SECTION A-A

TYPE I ELASTOMERIC EXP. BRG.



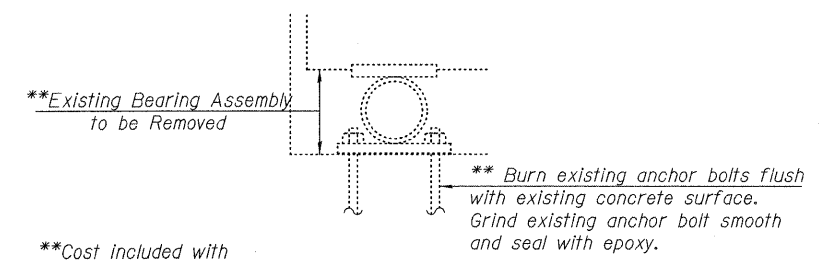
BEARING ASSEMBLY

PINTLE

Note:
Shim plates shall not be placed under Bearing Assembly.

TEMPORARY SHORING AND CRIBBING PROCEDURES

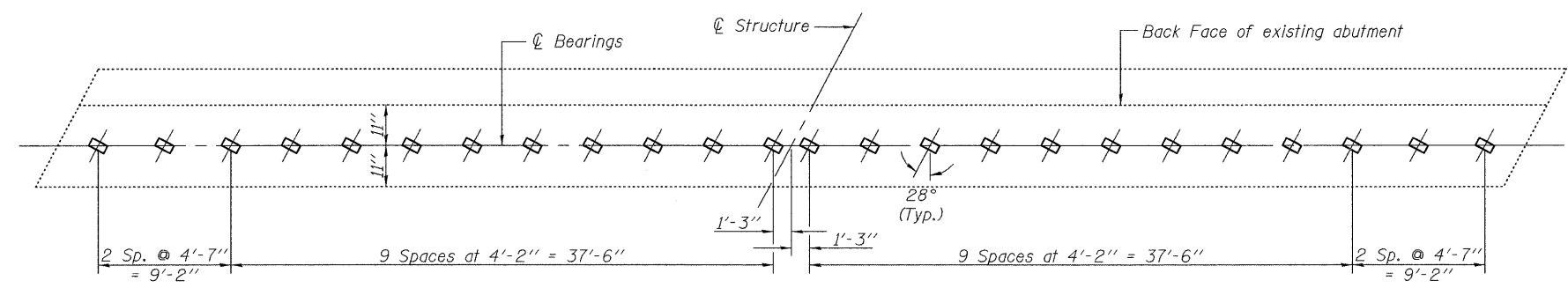
1. Prior to commencing any work at the bearings, the contractor shall submit plans for temporary shoring and cribbing of the slab for approval by the Engineer.
2. See Special Provision for Temporary Shoring and Cribbing.
3. Bearings are to be removed after concrete is removed and replaced prior to placement of new concrete.



REMOVE EXISTING BEARING AT ABUTMENTS

TYPICAL BEARING REACTION TABLE		
Abutment		
R _∅	(k)	11.9
R _L	(k)	19.5
Imp.	(k)	5.9
R _{Total}	(k)	37.3

Applies to bearings spaced at 4'-2"



BEARING LOCATIONS

BILL OF MATERIAL

Item	Unit	Total
Elastomeric Bearing Assembly Type I	Each	48
Temporary Shoring and Cribbing	L. Sum	1

rjngroup
Excellence through Ownership
200 West Front Street
Wheaton, IL 60187

ILLINOIS DEPARTMENT OF TRANSPORTATION
BEARING REPLACEMENT DETAILS
IL 43 OVER STONY CREEK
FAP RTE 348 SECTION 3128-Z-B-1
COOK COUNTY
STATION 179+01.40
STRUCTURE NO. 016-0322
DATE: 1-30-2009
DRAWN BY: BLB
CHECKED BY: WJV

2/12/2009 K:\1125592\Structures\11_43 over Stony Creek\Final Plans\Bearing.rvt