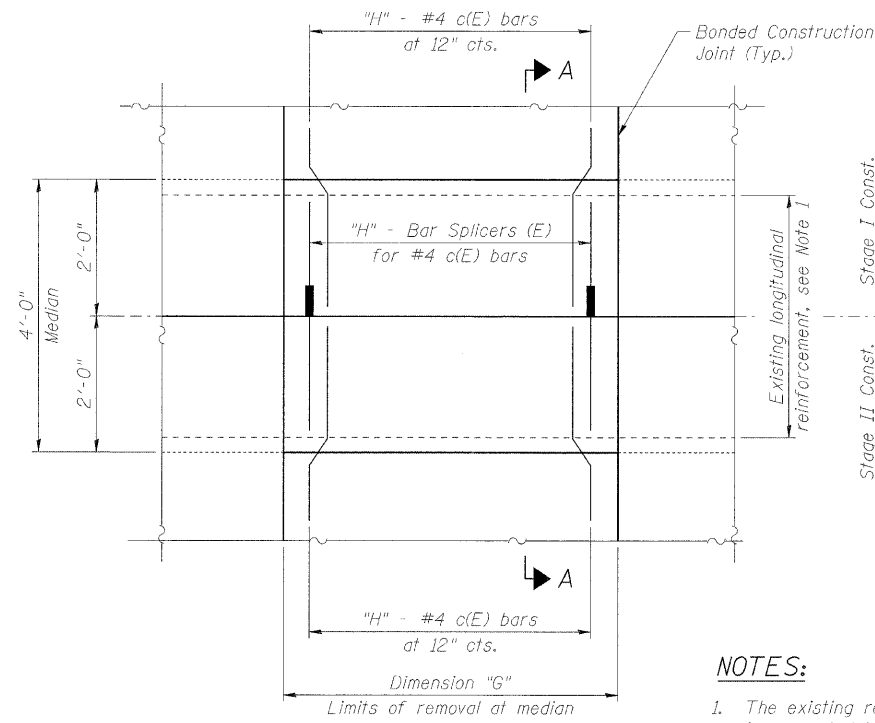
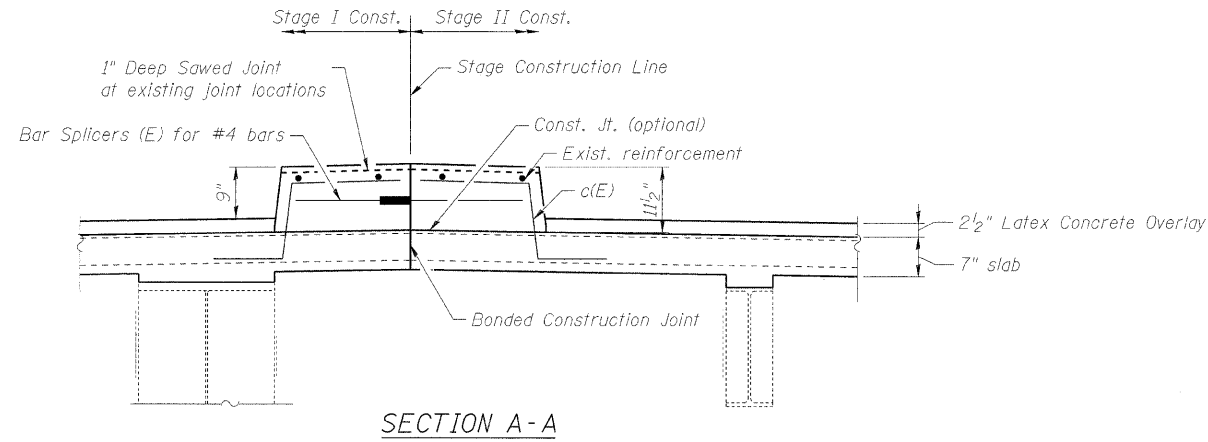


STATE OF ILLINOIS
DEPARTMENT OF TRANSPORTATION



TYPICAL MEDIAN PLAN

MEDIAN REINFORCEMENT TABLE

Median Location	"G"	"H"
1	6'-0"	7
2	13'-0"	14
3	8'-0"	9
4	7'-0"	8
5	6'-0"	7
6	6'-0"	7

NOTES:

- The existing reinforcement shall be sandblasted clean, straightened and incorporated into the new construction.
- Bar bending detail shown on sheet S-14.

BILL OF MATERIAL

Bar	No.	Size	Length (ft)	Shape
c(E)	104	#4	2'-10"	
Concrete Superstructure			Cu. Yd.	6.5
Reinforcement Bars, Epoxy Coated			Pound	200
Bar Splicers			Each	52

MEDIAN REPLACEMENT DETAILS

S.N. 016-0540

DESIGNED <i>B. Sauter</i>
CHECKED <i>E. Mroczek</i>
DRAWN <i>R. Danley</i>
CHECKED <i>B. Sauter</i>

Ciorba Group, Inc.
CONSULTING ENGINEERS
5507 North Cumberland Avenue, Suite 402 Chicago, Illinois 60656
Tel. 773.775.4009 Fax 773.775.4014 Email chicago@ciorba.com

SHEET NO. S-15B	F.A.U. RTE.	SECTION	COUNTY	TOTAL SHEETS	SHEET NO.
	2697	142 B-1-I	COOK	48	29B
S-27 SHEETS	CONTRACT NO. 60D89				
FED. ROAD DIST. NO.		ILLINOIS	FED. AID PROJECT		

Added sheet 4/08/09 E.K.M.

m:\proj\3329\3329_30\design\structural\road\hht\concrete_repairs\3329_30_158 Replacement Median Installation.sht 4/8/2009 rdenley