

|                           |           |                       |              |           |
|---------------------------|-----------|-----------------------|--------------|-----------|
| F.A.U. RTE.               | SECTION   | COUNTY                | TOTAL SHEETS | SHEET NO. |
| 2697                      | 142 B-1-I | COOK                  | 48           | 1         |
| FED. ROAD DIST. NO. _____ |           | ILLINOIS CONTRACT NO. | 60D89        |           |

STATE OF ILLINOIS  
DEPARTMENT OF TRANSPORTATION  
DIVISION OF HIGHWAYS

# PROPOSED HIGHWAY PLANS

**FAU 2697 / WILLOW SPRINGS ROAD  
OVER DES PLAINES RIVER AND I & M CANAL  
SECTION 142 B-1-I  
BRIDGE DECK OVERLAY  
PROJECT: ESP-2697(005)  
COOK COUNTY  
C-91-123-08**

FOR INDEX OF SHEETS SEE SHEET NUMBER 2

THIS IMPROVEMENT IS LOCATED IN  
THE VILLAGE OF WILLOW SPRINGS

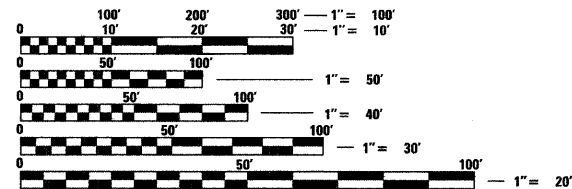
**TRAFFIC DATA**

2005 ADT - 17,700  
POSTED SPEED LIMIT - 40 MPH

**WILLOW SPRINGS ROAD**

SN: 016-0540 (STA. 114 + 54.50 TO 129 + 84.00)  
9 - SPAN STEEL CONTINUOUS MULTIBEAM  
WITH REINFORCED CONCRETE DECK  
ON PIERS AND CLOSED ABUTMENTS

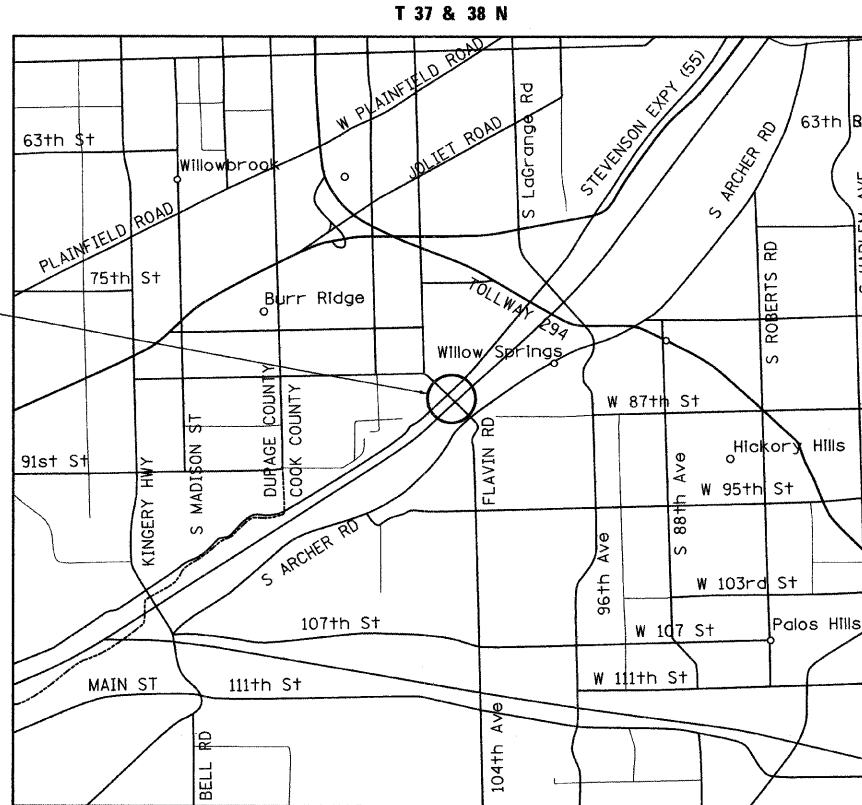
**IMPROVEMENT LOCATION  
SN: 016-0540**



FULL SIZE PLANS HAVE BEEN PREPARED USING STANDARD  
ENGINEERING SCALES. REDUCED SIZED PLANS WILL NOT  
CONFORM TO STANDARD SCALES. IN MAKING MEASUREMENTS  
ON REDUCED PLANS, THE ABOVE SCALES MAY BE USED.

J.U.L.I.E.  
JOINT UTILITY LOCATION INFORMATION FOR EXCAVATION  
1-800-892-0123  
OR 811

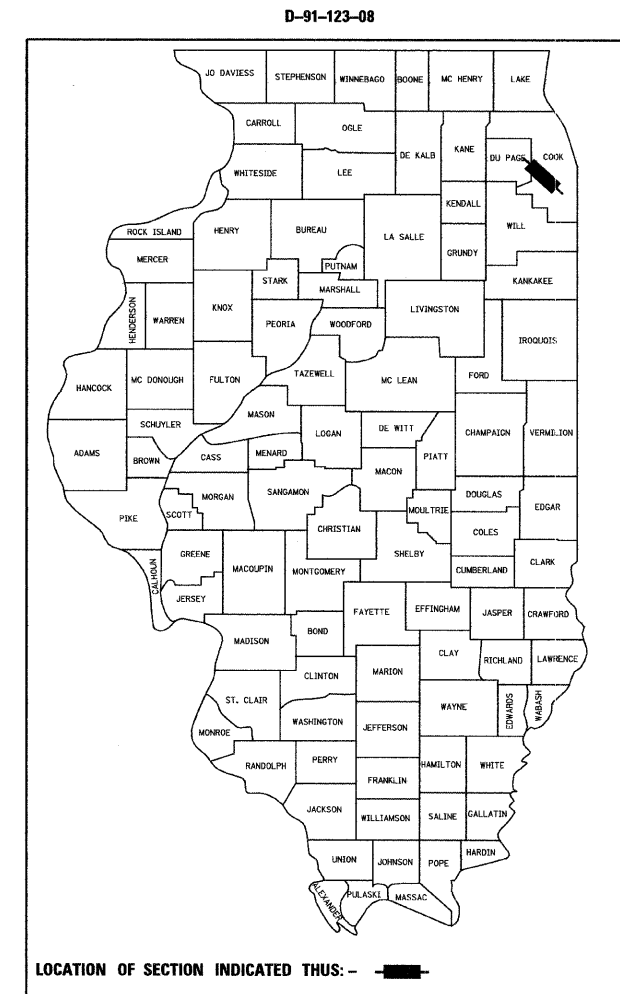
**Ciorba Group, Inc.**  
  
DESIGN FIRM  
REGISTRATION NUMBER  
184-001016  
  
CONSULTING ENGINEERS  
SUITE 402, 5507 NORTH CUMBERLAND AVE  
CHICAGO, ILLINOIS 60656 ☎ (773) 775-4009



LYONS TOWNSHIP

LOCATION MAP  
1" = 5000'

GROSS AND NET LENGTH OF PROJECT = 2080 FT = 0.39 MI



D-91-123-08

MATTHEW J. LEHR  
062-057159  
LICENSED PROFESSIONAL ENGINEER OF ILLINOIS  
DATE: 2/2/2009  
SEAL EXPIRES: 11/30/2009

EWA K. MROZCEK  
081-006067  
DATE: 2/2/2009  
SEAL EXPIRES: 11/30/2010

STATE OF ILLINOIS  
DEPARTMENT OF TRANSPORTATION  
DIVISION OF HIGHWAYS  
  
SUBMITTED FEBRUARY 3, 2009  
Dianna M. O'Keefe, P.E.  
DEPUTY DIRECTOR OF HIGHWAYS, REGION ENGINEER  
March 27, 2009  
Charles J. Smeraglio, P.E.  
ENGINEER OF DESIGN AND ENVIRONMENT  
March 27, 2009  
Christine M. Keed, P.E.  
DIRECTOR OF HIGHWAYS, CHIEF ENGINEER

**PRINTED BY THE AUTHORITY  
OF THE STATE OF ILLINOIS**

DISTRICT 1 DESIGN PLAN PREPARATION ENGINEER: K. ENG (847) 705-4247

**CONTRACT NO. 60D89**