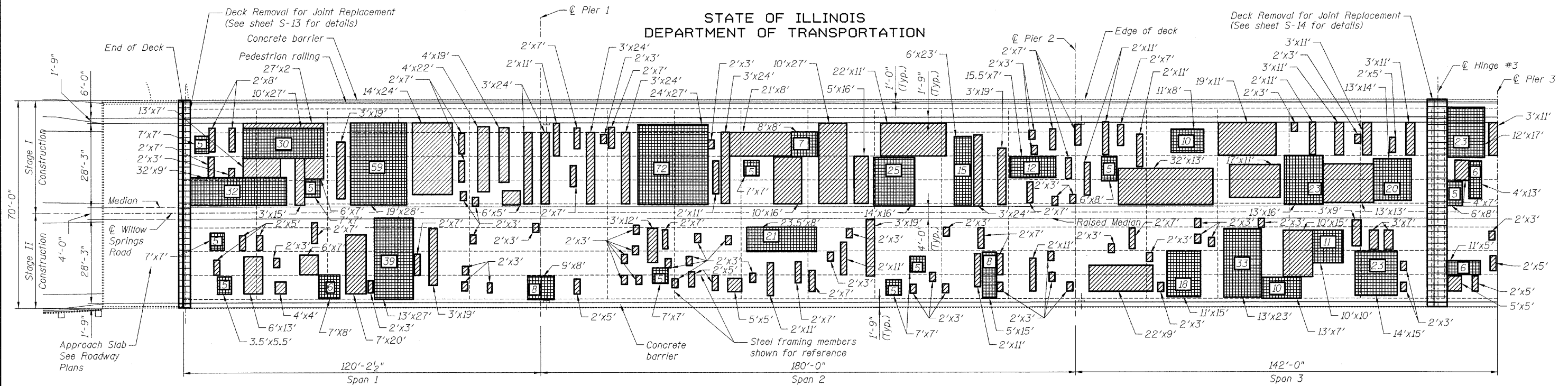
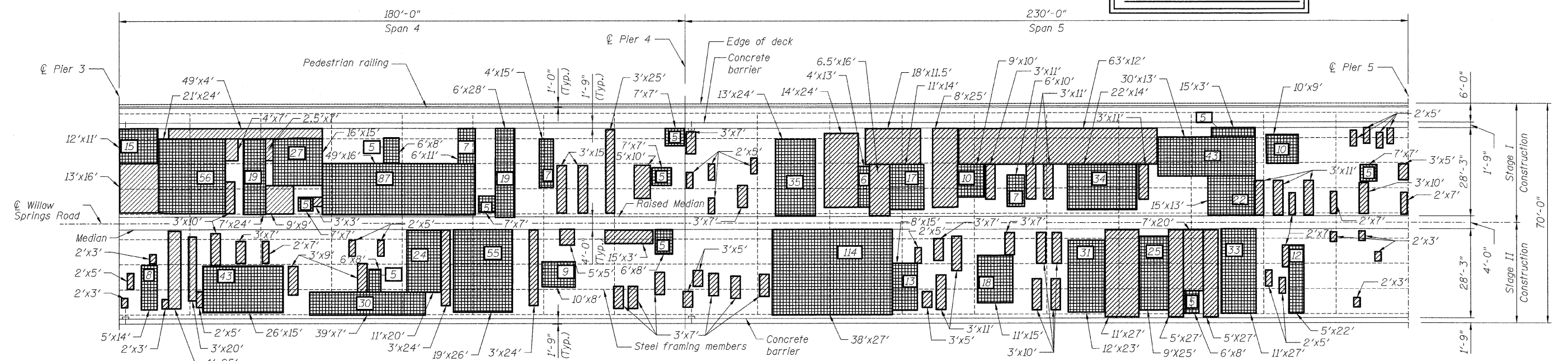


STATE OF ILLINOIS  
DEPARTMENT OF TRANSPORTATION



DECK PLAN

Deck Slab Repair (Partial Depth)  
Estimated Quantity 1,131 Sq. Yd.  
**FOR INFORMATION ONLY**



DECK PLAN

BILL OF MATERIAL

ITEM	UNIT	QUANTITY
Hot-Mix Asphalt Surface Removal (Deck)	Sq. Yd.	5,350
Concrete Removal	Cu. Yd.	31.6
Bridge Deck Grooving	Sq. Yd.	4,971
Protective Coat	Sq. Yd.	5,362
Bridge Deck Latex Concrete Overlay, 2 1/2 inches	Sq. Yd.	5,290
Bridge Deck Hydro-Scarification 1"	Sq. Yd.	5,350
Deck Slab Repair (Full Depth, Type II)	Sq. Yd.	1,600

**LAST DELAMINATION SURVEY:**  
November 27, 2007  
(Typical for all superstructure repairs)

**SUPERSTRUCTURE REPAIRS I**  
S.N. 016-0540

**LEGEND:**

- Deck Slab Repair (Full Depth), Type II  
X denotes estimated quantity in Sq. Yd.
- Concrete removal for expansion joint replacement
- Deck Slab Repair (Partial Depth)  
For information only. Quantity included with Bridge Deck Hydro-Scarification 1"

**NOTES:**

1. Repairs shall include but not be limited to the areas shown. The actual areas to be determined by the Engineer at the time of construction.
2. The Engineer shall record the actual deck repair areas in order to document as-built conditions for the future reference.
3. For expansion joint rehabilitation, see sheet S-13 thru S-15.
4. For parapet repairs see sheet S-9 thru S-12.
5. Concrete Removal includes deck and parapet removal.
6. Contractor shall use extreme care in the concrete removal operation. Any spalling, beam, shear stud or rebar damage caused by this operation shall be repaired by the Contractor to the satisfaction of the Engineer at no additional cost to the Department.
7. Quantities in the Bill of Material for Deck Slab Repairs Full Depth, Type II are 10% greater than areas shown on deck plan to accommodate for degradation since last delamination survey.
8. Protective coat shall be applied to N.B. & S.B. Lanes and to repaired areas of Concrete on Parapets and median.
9. Existing reinforcement in the deck shall be cleaned and incorporated into the repairs. Cost included with Deck Slab Repair (Full Depth, Type II).

DESIGNED B. Sauter  
CHECKED E. Mroczek  
DRAWN R. Danley  
CHECKED B. Sauter

**Giorba Group, Inc.**  
CONSULTING ENGINEERS  
5507 North Cumberland Avenue, Suite 402 Chicago, Illinois 60656  
Tel. 773.775.4009 Fax 773.775.4014 Email chicago@giorba.com

SHEET NO. S-7 S-27 SHEETS	F.A.U. RTE. 2697	SECTION 142 B-1-I	COUNTY COOK	TOTAL SHEETS 48	SHEET NO. 21
	CONTRACT NO. 60D89				
FED. ROAD DIST. NO.		ILLINOIS	FED. AID PROJECT		

2/14/2009 rdanley