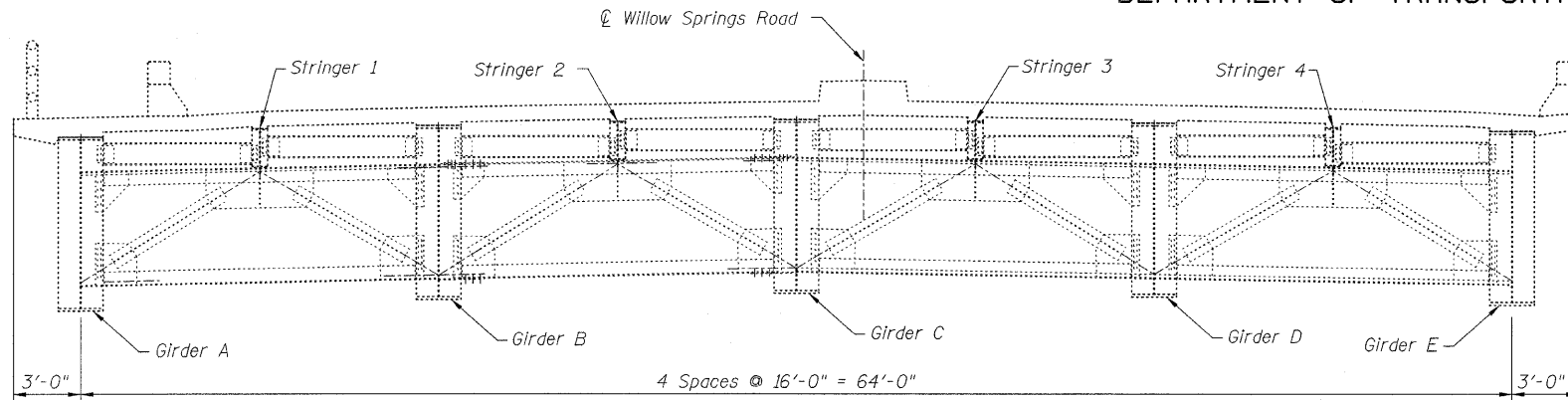
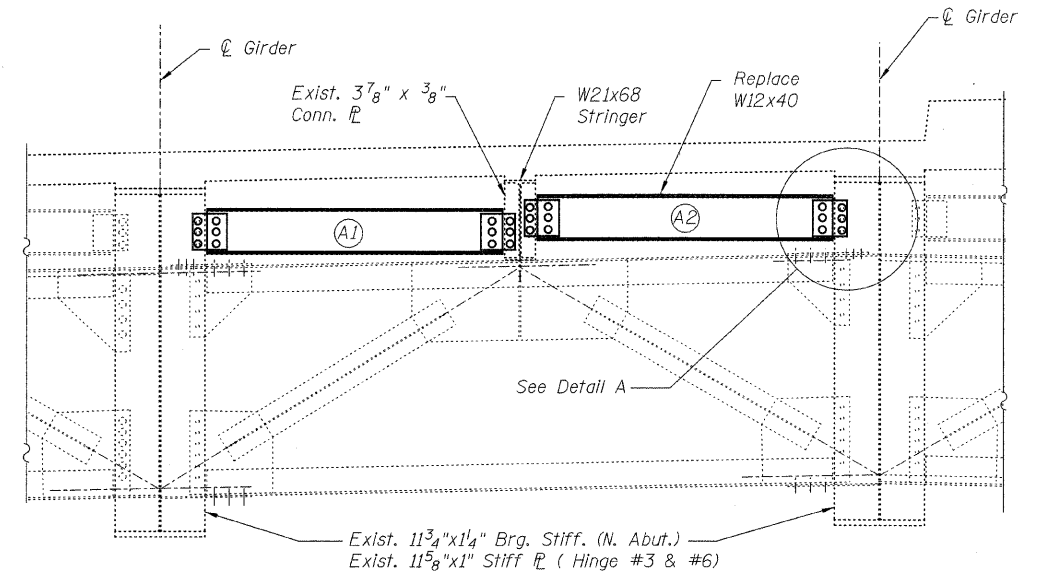


STATE OF ILLINOIS  
DEPARTMENT OF TRANSPORTATION



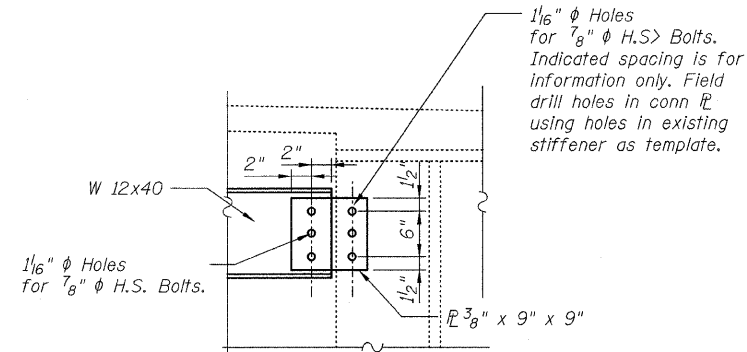
**CROSS-FRAMES**  
(Looking South)



**TYPICAL CROSS FRAME**

Looking North at N. Abutment  
Looking South at Hinge #3  
Looking North at Hinge #6

		MEMBER	
		A1	A2
		Existing	Replace with
NORTH ABUTMENT	Girder A - Girder B	—	✓
	Girder B - Girder C	—	✓
	Girder C - Girder D	✓	✓
	Girder D - Girder E	✓	✓
NORTH SIDE OF HINGE #3	Girder A - Girder B	✓	✓
	Girder B - Girder C	✓	✓
	Girder C - Girder D	—	—
	Girder D - Girder E	—	—
SOUTH SIDE OF HINGE #6	Girder A - Girder B	✓	✓
	Girder B - Girder C	✓	✓
	Girder C - Girder D	—	—
	Girder D - Girder E	—	—



**DETAIL A**

Hardened washers are required on 1 1/8" diameter holes in 3/8" PL's.

**NOTES:**

- See Sheets S-25 thru S-27 for existing steel details.
- Existing welded connections to be removed using the air-arc method and grind smooth all weld material remaining. Cost included with Structural Steel Removal.
- Repairs shall include but not be limited to the members shown. The actual repairs to be determined by the Engineer at the time of construction.
- The Contractor is responsible for means and methods to ensure the complete stability of the structural members during construction.
- Steel repairs to be coordinated with Expansion Joint Replacement.

**BILL OF MATERIAL**

ITEM	UNIT	QUANTITY
Furnishing & Erecting Structural Steel	Pound	4,050
Structural Steel Removal	Pound	4,050

**STEEL REPAIRS**  
**S.N. 016-0540**

DESIGNED	B. Sauter
CHECKED	E. Mroozek
DRAWN	R. Danley
CHECKED	B. Sauter



**Giorba Group, Inc.**  
CONSULTING ENGINEERS

5507 North Cumberland Avenue, Suite 402 Chicago, Illinois 60656  
Tel. 773.775.4009 Fax 773.775.4014 Email chicago@giorba.com

SHEET NO. S-17 S-27 SHEETS	F.A.U. RTE. 2697	SECTION 142 B-1-I	COUNTY COOK	TOTAL SHEETS 48	SHEET NO. 31
	CONTRACT NO. 60D89			FED. ROAD DIST. NO. ILLINOIS FED. AID PROJECT	