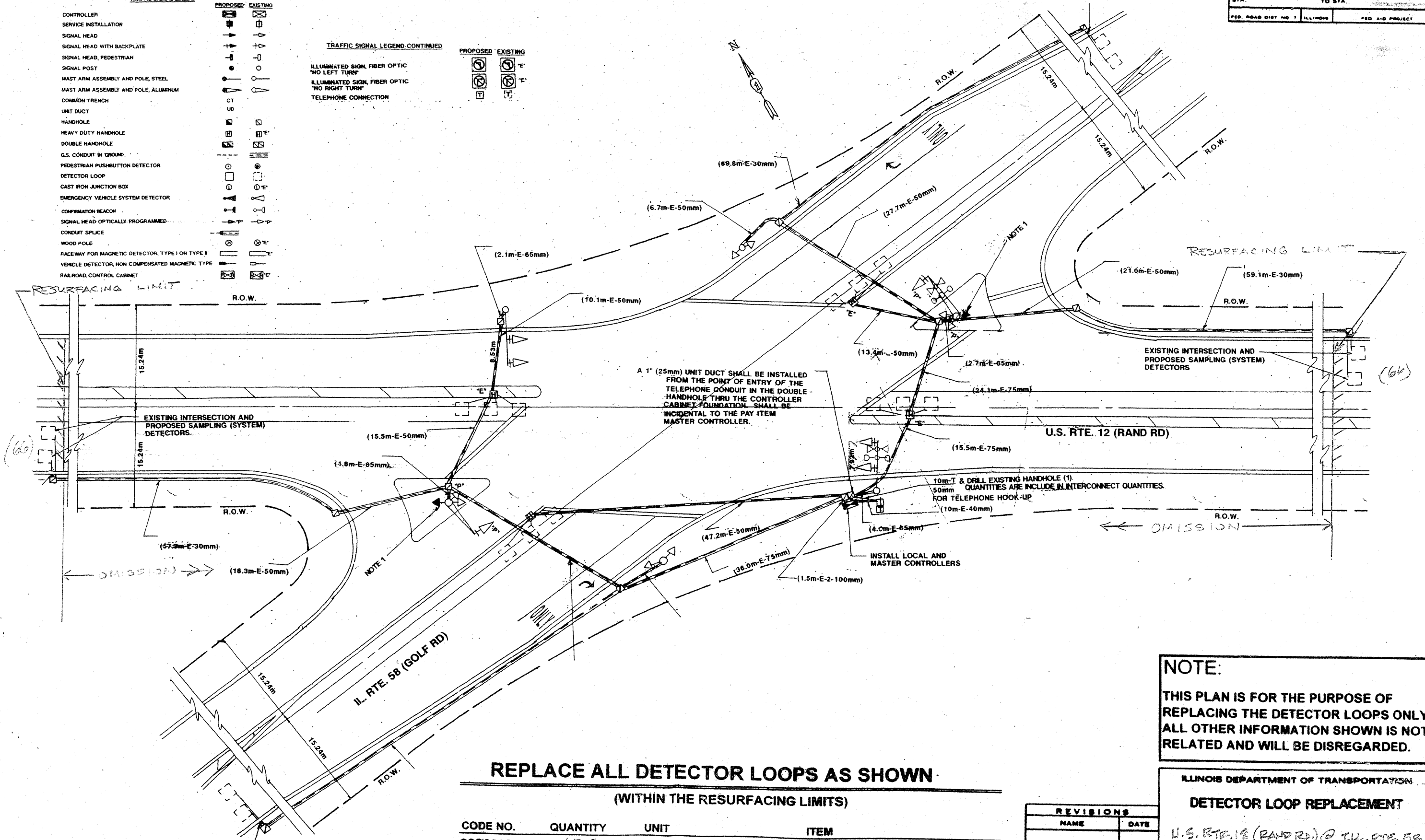


- TRAFFIC SIGNAL LEGEND**
- CONTROLLER
  - SERVICE INSTALLATION
  - SIGNAL HEAD
  - SIGNAL HEAD WITH BACKPLATE
  - SIGNAL HEAD, PEDESTRIAN
  - SIGNAL POST
  - MAST ARM ASSEMBLY AND POLE, STEEL
  - MAST ARM ASSEMBLY AND POLE, ALUMINUM
  - COMMON TRENCH
  - UNIT DUCT
  - HANDHOLE
  - HEAVY DUTY HANDHOLE
  - DOUBLE HANDHOLE
  - G.S. CONDUIT IN GROUND
  - PEDESTRIAN PUSHBUTTON DETECTOR
  - DETECTOR LOOP
  - CAST IRON JUNCTION BOX
  - EMERGENCY VEHICLE SYSTEM DETECTOR
  - CONFIRMATION BEACON
  - SIGNAL HEAD OPTICALLY PROGRAMMED
  - CONDUIT SPLICE
  - WOOD POLE
  - RACEWAY FOR MAGNETIC DETECTOR, TYPE I OR TYPE II
  - VEHICLE DETECTOR, NON COMPENSATED MAGNETIC TYPE
  - RAILROAD CONTROL CABINET

- TRAFFIC SIGNAL LEGEND-CONTINUED**
- ILLUMINATED SIGN, FIBER OPTIC "NO LEFT TURN"
  - ILLUMINATED SIGN, FIBER OPTIC "NO RIGHT TURN"
  - TELEPHONE CONNECTION



**NOTE:**  
 THIS PLAN IS FOR THE PURPOSE OF REPLACING THE DETECTOR LOOPS ONLY. ALL OTHER INFORMATION SHOWN IS NOT RELATED AND WILL BE DISREGARDED.

**REPLACE ALL DETECTOR LOOPS AS SHOWN**  
 (WITHIN THE RESURFACING LIMITS)

CODE NO.	QUANTITY	UNIT	ITEM
86600600	132	Foot	Detector Loop Replacement

REVISIONS	
NAME	DATE

ILLINOIS DEPARTMENT OF TRANSPORTATION  
**DETECTOR LOOP REPLACEMENT**  
 U.S. RTE. 12 (RAND RD) @ IL. RTE. 58  
 SCALE: NONE  
 DATE: JUNE 08  
 DRAWN BY: JHE  
 DESIGNED BY: JHE  
 CHECKED BY: DAD.