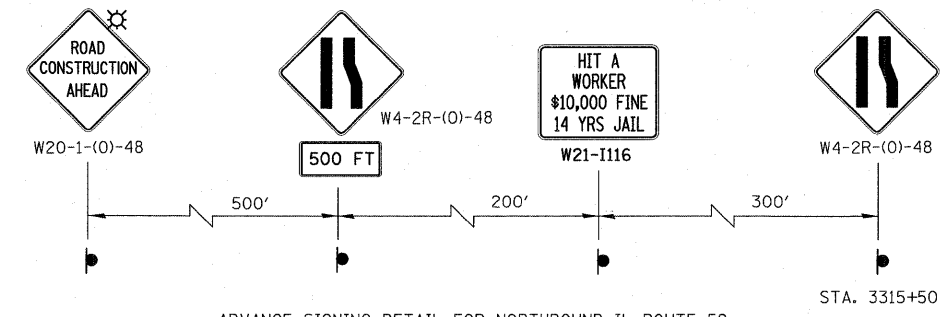


LEGEND

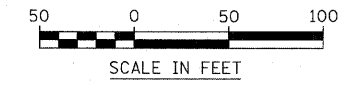
- CONSTRUCTION WORK ZONE
- TEMPORARY PAVEMENT PLACED IN THIS STAGE
- DIRECTION OF TRAFFIC
- TYPE II BARRICADES OR DRUMS
- CHANNELIZATION DRUM
- SIGN LOCATION
- TYPE III BARRICADE LOCATION
- FLASHING YELLOW LIGHT
- TEMPORARY RAISED REFLECTIVE PAVEMENT MARKER
- VERTICAL PANEL WITH STEADY BURNING LIGHT (CONTRACT 62417)



ADVANCE SIGNING DETAIL FOR NORTHBOUND IL ROUTE 59
(SEE NOTE 1)

NOTES

1. CONSTRUCTION STAGING SHALL BE COORDINATED WITH CONTRACT NO. 62417.
2. PAVEMENT MARKING AND TRAFFIC CONTROL DEVICES NOT INDICATED ARE PLACED IN CONTRACT 62417.



FILE NAME - \$FILEL\$	USER NAME - \$USER\$	DESIGNED - JCM	REVISED -	STATE OF ILLINOIS DEPARTMENT OF TRANSPORTATION	ILLINOIS ROUTE 59 MAINTENANCE OF TRAFFIC - STAGE 1	F.A. RTE. 338	SECTION 113 N-2	COUNTY WILL	TOTAL SHEETS 260	SHEET NO. 54	
		DRAWN - REW	REVISED -			SCALE: AS SHOWN		SHEET NO. 8 OF 36 SHEETS		CONTRACT NO. 60E73	
		CHECKED - JCM	REVISED -			STA. 3312+00 TO STA. 3325+00		FED. ROAD DIST. NO. [ILLINOIS]		FAP 338 (IL RTE. 59)	
		DATE - JANUARY 16, 2009	REVISED -								