

CONTRACT NO. 62417 (SEE NOTE 1)
 CONTRACT NO. 60E73
 STA. 3327+30



WET REFLECTIVE TEMP TAPE, TY III, 4" WHITE EDGE LINE
 STA. 3325+00 TO STA. 3337+00

WET REFLECTIVE TEMP TAPE, TY III, 4" YELLOW EDGE LINES,
 STA. 3325+00 TO STA. 3326+06

TYPE II BARRICADES OR DRUMS
 W/STEADY BURNING LIGHTS
 SPACED @ 50' C-C
 STA. 3325+75 TO STA. 3337+00

WET REFLECTIVE TEMP TAPE, TY III,
 4" YELLOW EDGE LINE
 STA. 3326+69 TO STA. 3335+04

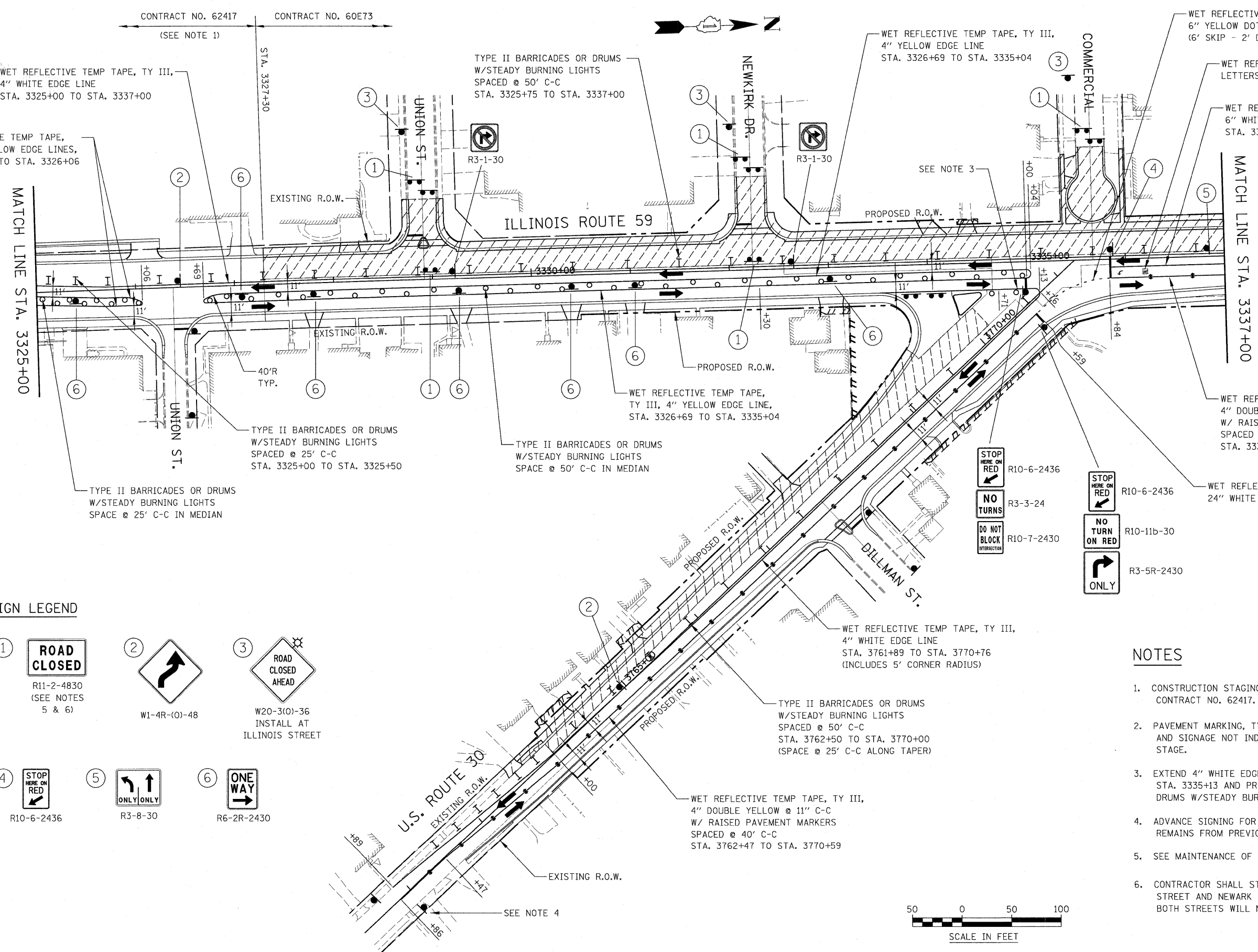
WET REFLECTIVE TEMP TAPE, TY III,
 6" YELLOW DOTTED LINE, 100'R
 (6' SKIP - 2' DASH)

WET REFLECTIVE TEMP TAPE, TY III,
 LETTERS AND SYMBOLS, TYP.

WET REFLECTIVE TEMP TAPE, TY III,
 6" WHITE LINE
 STA. 3335+87 TO STA. 3337+00

MATCH LINE STA. 3325+00

MATCH LINE STA. 3337+00



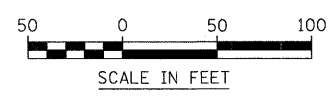
SIGN LEGEND

- ① **ROAD CLOSED**
R11-2-4830 (SEE NOTES 5 & 6)
- ②
W1-4R-(O)-48
- ③ **ROAD CLOSED AHEAD**
W20-3(O)-36
INSTALL AT ILLINOIS STREET
- ④ **STOP HERE ON RED**
R10-6-2436
- ⑤ **ONLY ONLY**
R3-8-30
- ⑥ **ONE WAY**
R6-2R-2430

- STOP HERE ON RED** R10-6-2436
- NO TURNS** R3-3-24
- DO NOT BLOCK INTERSECTION** R10-7-2430
- STOP HERE ON RED** R10-6-2436
- NO TURN ON RED** R10-11b-30
- ONLY** R3-5R-2430

NOTES

1. CONSTRUCTION STAGING SHALL BE COORDINATED WITH CONTRACT NO. 62417.
2. PAVEMENT MARKING, TYPE II BARRICADES OR DRUMS, AND SIGNAGE NOT INDICATED REMAIN FROM PREVIOUS STAGE.
3. EXTEND 4" WHITE EDGE LINE FROM STA. 3334+71 TO STA. 3335+13 AND PROVIDE TYPE II BARRICADES OR DRUMS W/STEADY BURNING LIGHTS AS SHOWN.
4. ADVANCE SIGNING FOR WESTBOUND US ROUTE 30 REMAINS FROM PREVIOUS STAGE.
5. SEE MAINTENANCE OF TRAFFIC GENERAL NOTES 31 & 32.
6. CONTRACTOR SHALL STAGE CONSTRUCTION OF UNION STREET AND NEWARK DRIVE AT IL ROUTE 59 SUCH THAT BOTH STREETS WILL NOT BE CLOSED SIMULTANEOUSLY.



FILE NAME =	USER NAME = #USER#	DESIGNED - JCM	REVISED -	STATE OF ILLINOIS DEPARTMENT OF TRANSPORTATION	ILLINOIS ROUTE 59 MAINTENANCE OF TRAFFIC - STAGE 3			F.A. RTE. 338	SECTION 113 N-2	COUNTY WILL	TOTAL SHEETS 260	SHEET NO. 64
#FILEL#		DRAWN - REW	REVISED -		SCALE: AS SHOWN	SHEET NO. 18 OF 36 SHEETS	STA. 3325+00 TO STA. 3337+00	FED. ROAD DIST. NO. ILLINOIS	FAP 338 (IL RTE. 59)	CONTRACT NO. 60E73		
		CHECKED - JCM	REVISED -									
		DATE - JANUARY 16, 2009	REVISED -									