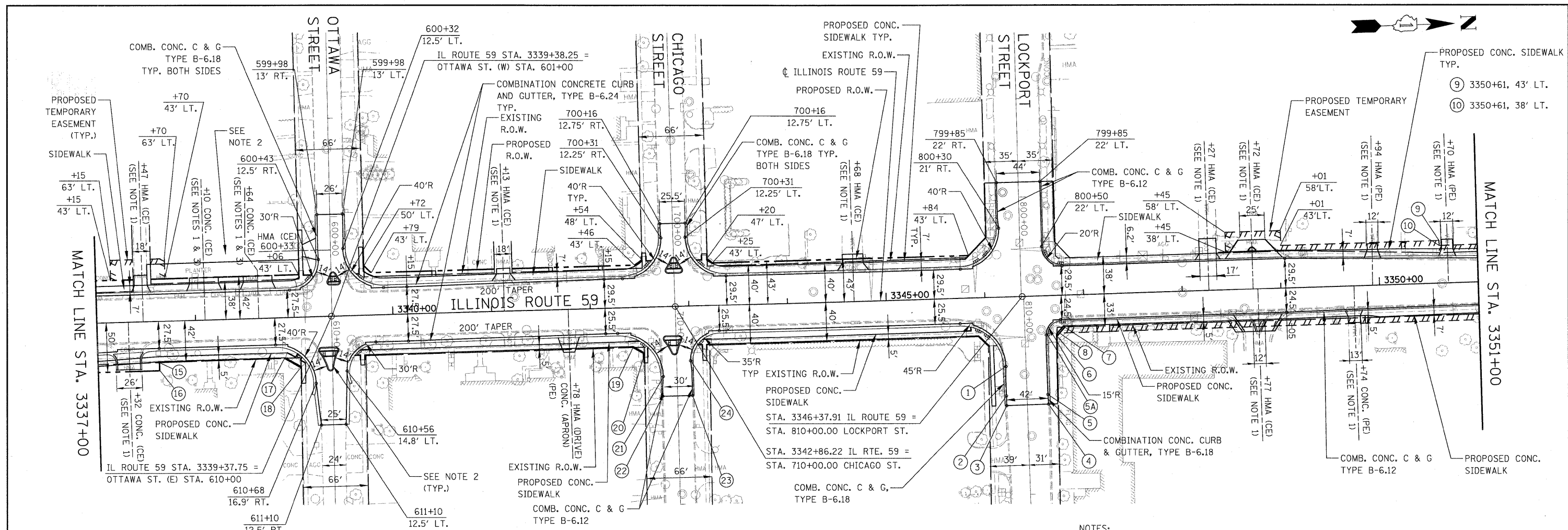


DATE	
BY	
PLAN	SURVEYED
	PLOTTED
	GRADES CHECKED
	STRUCTURE NOTATIONS CHECKED
	NOTE BOOK
	NO.
	CADD FILE NAME

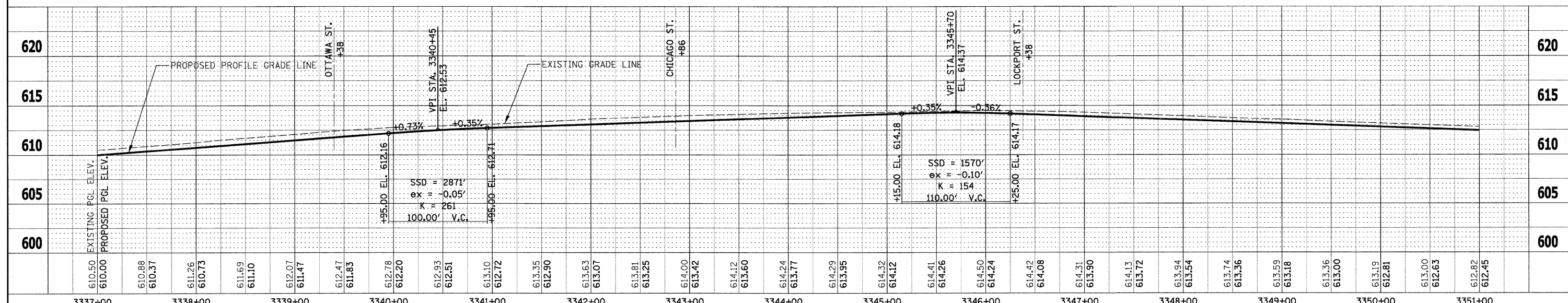
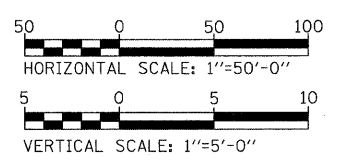
DATE	
BY	
PROFILE	SURVEYED
	PLOTTED
	GRADES CHECKED
	STRUCTURE NOTATIONS CHECKED
	NOTE BOOK
	NO.
	CADD FILE NAME



- (15) 3337+62, 41.7' RT.
- (16) 3337+62, 50' RT.
- (17) 3338+89, 41' RT.
- (18) 3339+02, 51' RT.
- (19) 3342+42, 40' RT.
- (20) 3342+54, 47' RT.
- (21) 710+71, 14' RT.
- (22) 710+90, 15' RT.
- (23) 710+90, 15' LT.
- (24) 710+55, 14' LT.
- (1) 810+70, 20.5' RT.
- (2) 811+00, 21' RT.
- (3) 811+10, 21' RT.
- (4) 811+10, 21' LT.
- (5) 811+00, 21' LT.
- (5A) 810+40, 21.5' LT.
- (6) 3346+72, 41' RT.
- (7) 3346+80, 32' RT.
- (8) 3346+75, 38' RT.

NOTES:

- DRIVEWAY GEOMETRICS & MATERIAL SHALL BE IN ACCORDANCE WITH IDOT DISTRICT 1 STANDARDS BD-01 AND BD-02.
- SEE ISLAND AND DRIVEWAY DETAILS SHEET FOR RIGHT-IN/RIGHT-OUT ISLAND INFORMATION.
- SEE ISLAND AND DRIVEWAY DETAILS SHEET FOR ADDITIONAL INFORMATION FOR THE PROPOSED DRIVEWAYS AT STA. 3338+10, LT AND STA. 3338+64, LT.



FILE NAME =	USER NAME = #USER#	DESIGNED - PJO	REVISED -	STATE OF ILLINOIS DEPARTMENT OF TRANSPORTATION	ILLINOIS ROUTE 59 PLAN & PROFILE	F.A. RTE. 338	SECTION 113 N-2	COUNTY WILL	TOTAL SHEETS 260	SHEET NO. 91		
#FILEL#	PLOT SCALE = #SCALE#	DRAWN - RTA	REVISED -			SCALE: AS SHOWN	SHEET NO. 2 OF 3 SHEETS	STA. 3337+00 TO STA. 3351+00	FED. ROAD DIST. NO. ILLINOIS	CONTRACT NO. 60E73		
	PLOT DATE = #DATE#	CHECKED - JCM	REVISED -			FAP 338 (IL RTE. 59)						
		DATE - JANUARY 16, 2009	REVISED -									