

PART OF THE NW 1/4 OF SEC. 15 AND PART OF THE NE 1/4 OF SEC. 16, TWP. 36 N., R. 9 E. OF THE 3RD. P.M., IN WILL COUNTY, ILLINOIS.

PARCEL NUMBER	OWNER	TOTAL HOLDINGS ACRES	PART TAKEN ACRES	AREA IN EXISTING R.O.W. ACRES	REMAINDER AREA ACRES	EASEMENT AREA SQUARE FEET	EASEMENT PURPOSE	PERMANENT INDEX NUMBER	PROPERTY ACQUIRED BY
1FP0253 1FP0253T.E.	Roy W. Spangler and Jane E. Spangler, husband and wife, as joint tenants	0.734	0.091	0.070	0.643	0.008	364	Driveway Construction	06-03-16-221-014
1FP0254	Jennie A. Watkins and David Keith Watkins, Sr., husband and wife, as Tenants by the Entirety	0.309	0.030	N/A	0.279	N/A	N/A	N/A	06-03-16-221-008
1FP0255	Barbara Konkol	0.275	0.040	N/A	0.235	N/A	N/A	N/A	06-03-16-220-012

Point Number	Tie to point	Tie Distance (feet)
1	T1	21.42
	T2	13.49
	T3	21.88
2	T1	7.12
	T2	6.53
	T3	8.14
3	T1	8.38
	T2	23.10
	T3	43.50
4	T1	42.24
	T2	23.22
	T3	13.08

RESUBDIVISION
OUT LOT B OF HIGHVIEW
SUBDIVISION, UNIT NO. 1
Recorded March 16, 1987
as Document No. R67-3370

38

T1, T2 & T3 to Point No. 2 are a Cross Cut (Set) in Concrete Drive.

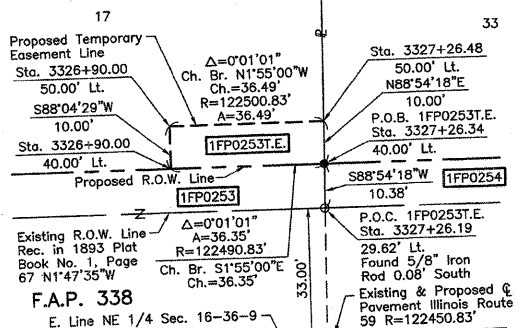
STATION	OFFSET	NORTH	EAST
3328+56.88	40.00' Lt.	1,798,181.584	1,020,125.421
3328+59.25	49.35' Lt.	1,798,183.654	1,020,116.000
3329+25.23	49.47' Lt.	1,798,249.618	1,020,113.775
3329+25.32	71.00' Lt.	1,798,249.030	1,020,092.249
3329+45.21	29.38' Lt.	1,798,270.237	1,020,133.219
3329+52.00	40.00' Lt.	1,798,276.686	1,020,122.391
3330+59.46	29.41' Lt.	1,798,384.449	1,020,129.643
3330+59.49	40.00' Lt.	1,798,384.160	1,020,119.056

Parcel	Document No.	Date Recorded
1FP0254	1012121	June 23, 1964
1FP0255	1012121	June 23, 1964
---	26403	May 16, 1857

HIGHVIEW SUBDIVISION
UNIT NO. 1

Recorded June 23, 1964
as Document No. 1012121
Corrected by Certificate of Correction
Recorded April 23, 1965
as Document No. 1032670
Subdivision Re-Recorded August 25, 1964
as Document No. 1016494

ASSESSOR'S SUBDIVISION OF
PART OF NE 1/4 SEC. 16-36-9



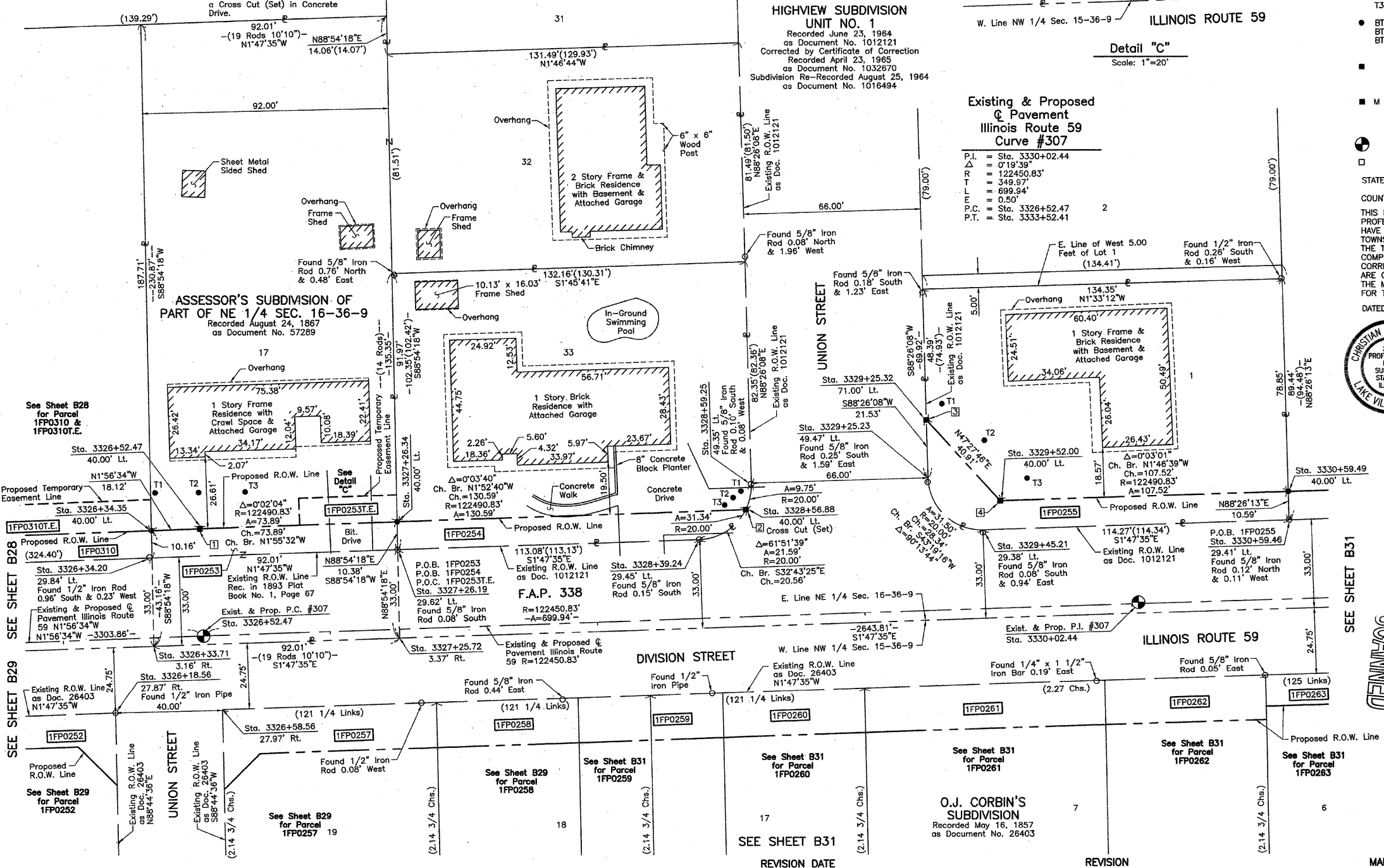
F.A.P. 338
E. Line NE 1/4 Sec. 16-36-9

HIGHVIEW SUBDIVISION
UNIT NO. 1
Recorded June 23, 1964
as Document No. 1012121
Corrected by Certificate of Correction
Recorded April 23, 1965
as Document No. 1032670
Subdivision Re-Recorded August 25, 1964
as Document No. 1016494

Existing & Proposed
Pavement
Illinois Route 59
Curve #307

P.I.	Sta.
1	3330+02.44
2	3326+52.47
3	3333+52.41

Detail "C"
Scale: 1"=20'



DATE	BY	MADE	CHECKED	INDEXED	ROW PLAT	NOTEBOOK



Christian H. Jorgensen, PRESIDENT
ILLINOIS PROFESSIONAL LAND SURVEYOR NO. 35-2797
LICENSE EXPIRATION DATE: NOVEMBER 30, 2006
THIS PROFESSIONAL SERVICE CONFORMS TO THE CURRENT ILLINOIS MINIMUM STANDARDS FOR A BOUNDARY SURVEY. Coordinates are based on the Published Metric Coordinate Values at Found Geodetic Survey Control Monument "Will County GPS 333", P.I.D. AE2551, of N.542,285.095-E.311,129.617. NOTE: SURFACE COORDINATES ARE SHOWN.

STATION	OFFSET	NORTH	EAST
3326+18.56	27.87' Rt.	1,797,945.628	1,020,201.159
3326+33.71	3.16' Rt.	1,797,959.934	1,020,175.949
3326+34.20	29.84' Lt.	1,797,959.303	1,020,142.953
3326+34.35	40.00' Lt.	1,797,959.109	1,020,132.797
3326+52.47	40.00' Lt.	1,797,977.217	1,020,132.183
3326+58.56	27.97' Rt.	1,797,985.610	1,020,199.908
3326+90.00	40.00' Lt.	1,798,014.740	1,020,130.916
3326+90.00	50.00' Lt.	1,798,014.404	1,020,120.921
3327+25.72	3.37' Rt.	1,798,051.896	1,020,173.070
3327+26.19	29.62' Lt.	1,798,051.265	1,020,140.074
3327+26.34	40.00' Lt.	1,798,051.067	1,020,129.700
3327+26.48	50.00' Lt.	1,798,050.876	1,020,119.701
3328+39.24	29.45' Lt.	1,798,164.288	1,020,136.860

JORGENSEN & ASSOCIATES, INC.
120 PARK AVENUE
LAKE VILLA, ILLINOIS 60046
(847) 356-3371

PLAT OF HIGHWAYS
STATE OF ILLINOIS
DEPARTMENT OF TRANSPORTATION
F.A.P. 338 (ILLINOIS ROUTE 59)

SECTION 17 WILL COUNTY
PROJECT JOB NO. R-91-067-01
STATION 3326+00 TO STATION 3331+00
SCALE: 1"=20' SHEET B30 OF B58

BUREAU OF LAND ACQUISITION
201 WEST CENTER COURT
SCHAUMBURG, ILLINOIS 60196