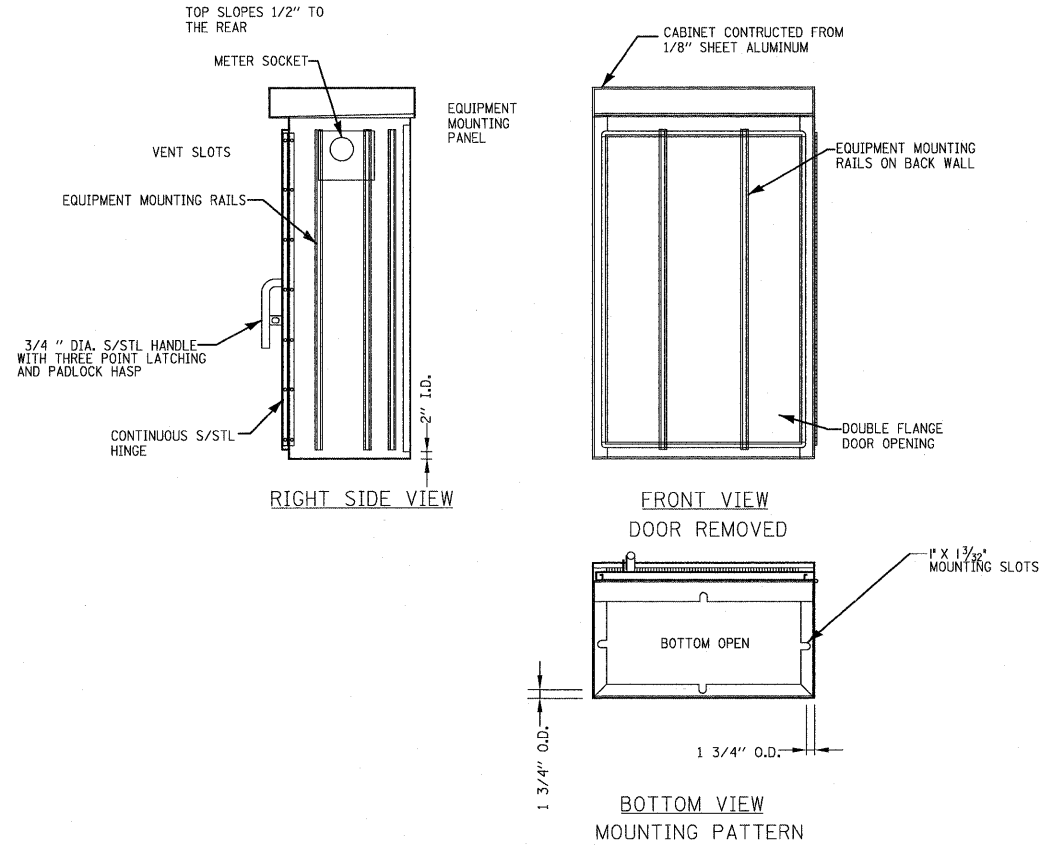


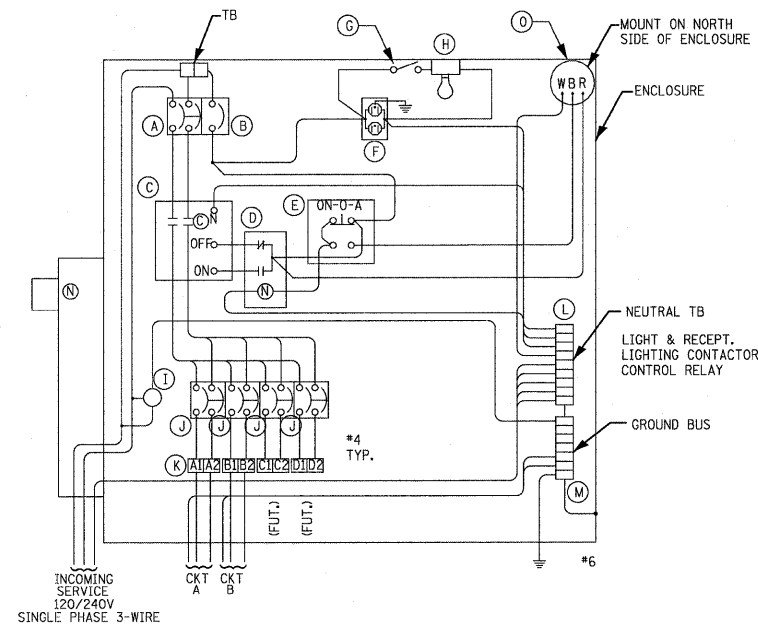
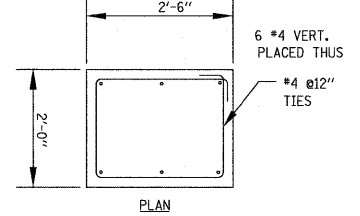
LIGHTING CONTROLLER "A"
WIRING DIAGRAM

ITEM	QTY.	DESCRIPTION
A	1	MAIN CIRCUIT BREAKER, MOLDED CASE, THERMAL MAGNETIC, 2-POLE, 240 V. SINGLE-PHASE, 150 A., BOLT-ON TYPE, TRIP INTERRUPTING RATING OF 22,000 RMS SYMMETICAL AMPERES AT 240 V.
B	1	CONTROL CIRCUIT BREAKER, MOLDED CASE, THERMAL MAGNETIC, SINGLE-POLE, 120 V. SINGLE-PHASE 20 A. BOLT-ON TYPE, TRIP INTERRUPTING RATING OF 14,000 RMS SYMMETICAL AMPERES AT 120 V.
C	1	LIGHTING CONTACTOR MECHANICALLY HELD, CUTLER HAMMER A202K4BAM 200 A. 2-POLE, 600 V. WITH 120 COIL
D	1	CONTROL RELAY CUTLER HAMMER D3PR2 RATED 12 A. AT 120 VAC
E	1	ON-OFF-AUTO 3-POSITION SELECTOR SWITCH GE CR104P HEAVY DUTY SWITCH, RATED FOR 10 A. AT 600 VAC.
F	1	GFCI RECEPTACLE, 120 V., 20 A. SPEC. GRADE, NEMA CONFIG. 5-20R
G	1	SPDT MOMENTARY NORMALLY OPEN, NORMALLY CLOSED PUSHBUTTON SWITCH CUTLER HAMMER 84F1063 RATED 15 A. AT 120 V.
H	1	60 WATT LIGHT FIXTURE, VAPOR TIGHT, WITH GLOBE, GUARD AND MOUNTING BOX.
I	4	SECONDARY SURGE ARRESTER SQUARE D SDSA1175, 175 VAC PHASE-TO-GROUND MAXIMUM
J	4	BRANCH LIGHTING CIRCUIT BREAKER, MOLDED CASE, THERMAL MAGNETIC, 2-POLE, 240 V. SINGLE-PHASE, 40 A. TRIP INTERRUPTING RATING 10,000 RMS SYMMETICAL AMPERES AT 240 V.
K	1	TERMINAL BLOCK RATED 600 V., 85 A.
L	1	COPPER NEUTRAL BUS
M	1	COPPER GROUND BUS
N	1	COM-ED SERVICE METER
O	1	PHOTOCELL

LIGHTING CONTROLLER "A"
COMPONENT SCHEDULE



BOTTOM VIEW
MOUNTING PATTERN

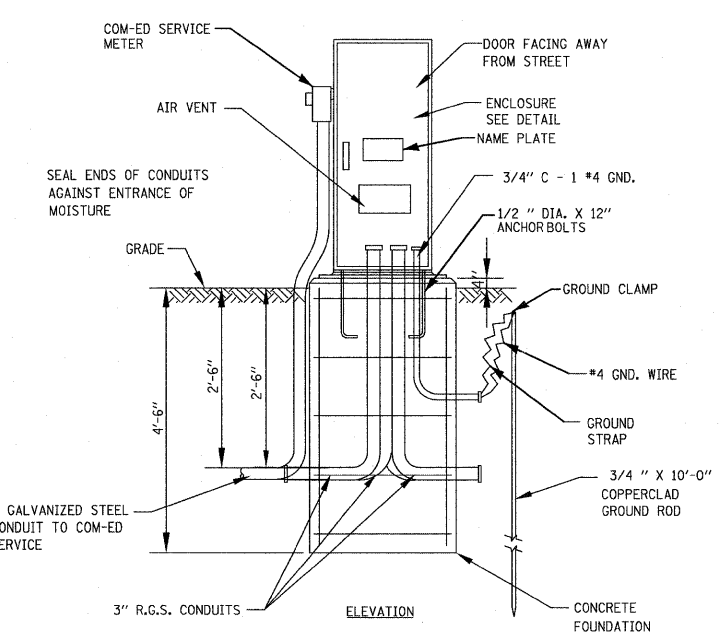


LIGHTING CONTROLLER "B"
WIRING DIAGRAM

ITEM	QTY.	DESCRIPTION
A	1	MAIN CIRCUIT BREAKER, MOLDED CASE, THERMAL MAGNETIC, 2-POLE, 240 V. SINGLE-PHASE, 150 A., BOLT-ON TYPE, TRIP INTERRUPTING RATING OF 22,000 RMS SYMMETICAL AMPERES AT 240 V.
B	1	CONTROL CIRCUIT BREAKER, MOLDED CASE, THERMAL MAGNETIC, SINGLE-POLE, 120 V. SINGLE-PHASE 20 A. BOLT-ON TYPE, TRIP INTERRUPTING RATING OF 14,000 RMS SYMMETICAL AMPERES AT 120 V.
C	1	LIGHTING CONTACTOR MECHANICALLY HELD, CUTLER HAMMER A202K4BAM 200 A. 2-POLE, 600 V. WITH 120 COIL
D	1	CONTROL RELAY CUTLER HAMMER D3PR2 RATED 12 A. AT 120 VAC
E	1	ON-OFF-AUTO 3-POSITION SELECTOR SWITCH GE CR104P HEAVY DUTY SWITCH, RATED FOR 10 A. AT 600 VAC.
F	1	GFCI RECEPTACLE, 120 V., 20 A. SPEC. GRADE, NEMA CONFIG. 5-20R
G	1	SPDT MOMENTARY NORMALLY OPEN, NORMALLY CLOSED PUSHBUTTON SWITCH CUTLER HAMMER 84F1063 RATED 15 A. AT 120 V.
H	1	60 WATT LIGHT FIXTURE, VAPOR TIGHT, WITH GLOBE, GUARD AND MOUNTING BOX.
I	4	SECONDARY SURGE ARRESTER SQUARE D SDSA1175, 175 VAC PHASE-TO-GROUND MAXIMUM
J	4	BRANCH LIGHTING CIRCUIT BREAKER, MOLDED CASE, THERMAL MAGNETIC, 2-POLE, 240 V. SINGLE-PHASE, 40 A. TRIP INTERRUPTING RATING 10,000 RMS SYMMETICAL AMPERES AT 240 V.
K	1	TERMINAL BLOCK RATED 600 V., 85 A.
L	1	COPPER NEUTRAL BUS
M	1	COPPER GROUND BUS
N	1	COM-ED SERVICE METER
O	1	PHOTOCELL

LIGHTING CONTROLLER "B"
COMPONENT SCHEDULE

- NOTES
- CABINET SHALL BE FABRICATED FROM 0.125-INCH SHEET ALUMINUM #3003H14, FORMED AND ARC WELDED ASSEMBLY.
 - ALL SCREWS AND HARDWARE SHALL BE PLATED, GALVANIZED, OR MADE OF BRASS, ALUMINUM, OR STAINLESS STEEL.
 - NAME PLATE SHALL HAVE ENGRAVED 0.75-INCH HIGH LETTERS FILLED IN BLACK: "STREET LIGHTING".
 - CABINET SHALL BE PRIMED AND PAINTED AS SPECIFIED.
 - ELECTRIC UTILITY METER BOX SHALL BE MOUNTED ON THE SIDE OF CONTROL CABINET AS SHOWN ON THE PANEL LAYOUT DIAGRAM.
 - THE COMPLETED CONTROLLER SHALL BE U.L. LISTED AS AN INDUSTRIAL CONTROL PANEL UNDER UL508.
 - METAL MOUNTING PANEL SHALL BE #10 GAUGE GALVANIZED SHEET STEEL FLANGED BACK 0.75-INCHES I.D. ON 4 SIDES.
 - CIRCUIT BREAKERS, CONTACTORS AND OTHER COMPONENTS SHALL MOUNTED ON 0.125-INCH THICK GLASTIC INSULATION BACK PANEL.
 - ALL DEVICES SHALL BE FRONT REMOVABLE.
 - BUS BAR SHALL HAVE 22 LUG TERMINALS SIZED TO ACCOMMODATE REQUIRED WIRE SIZES. NEUTRAL BUS SHALL BE PAINTED WHITE. GROUND BUS SHALL BE PAINTED GREEN.
 - ALL LUGS SHALL BE COPPER SCREWS AND CONNECTORS, SPRING HELD.
 - ALL WIRING TERMINATIONS SHALL BE RATED 75 DEGREES C. (MIN.).
 - ALL CONTROL WIRING SHALL BE 600V RATED, TYPE MTW.
 - ALL POWER WIRING SHALL BE 600V TYPE RHH/RHW.
 - A LAMINATED COPY OF THE CIRCUIT SCHEMATIC DIAGRAM SHALL BE ATTACHED TO THE INSIDE OF THE CONTROLLER.
 - ALL 120 VOLT SYSTEM AND ALL CONTROL WIRING SHALL BE #12 AWG STRANDED UNLESS OTHERWISE INDICATED.
 - ALL WIRING SHALL BE NEATLY DRESSED AND SUPPORTED.



LIGHTING CONTROLLER AND FOUNDATION DETAIL
NO SCALE

NOTE: SERVICE METER, CONDUITS & FOUNDATION PROVIDED BY CONTRACTOR. LIGHTING CONTROLLER FURNISHED BY VILLAGE FOR INSTALLATION BY CONTRACTOR.