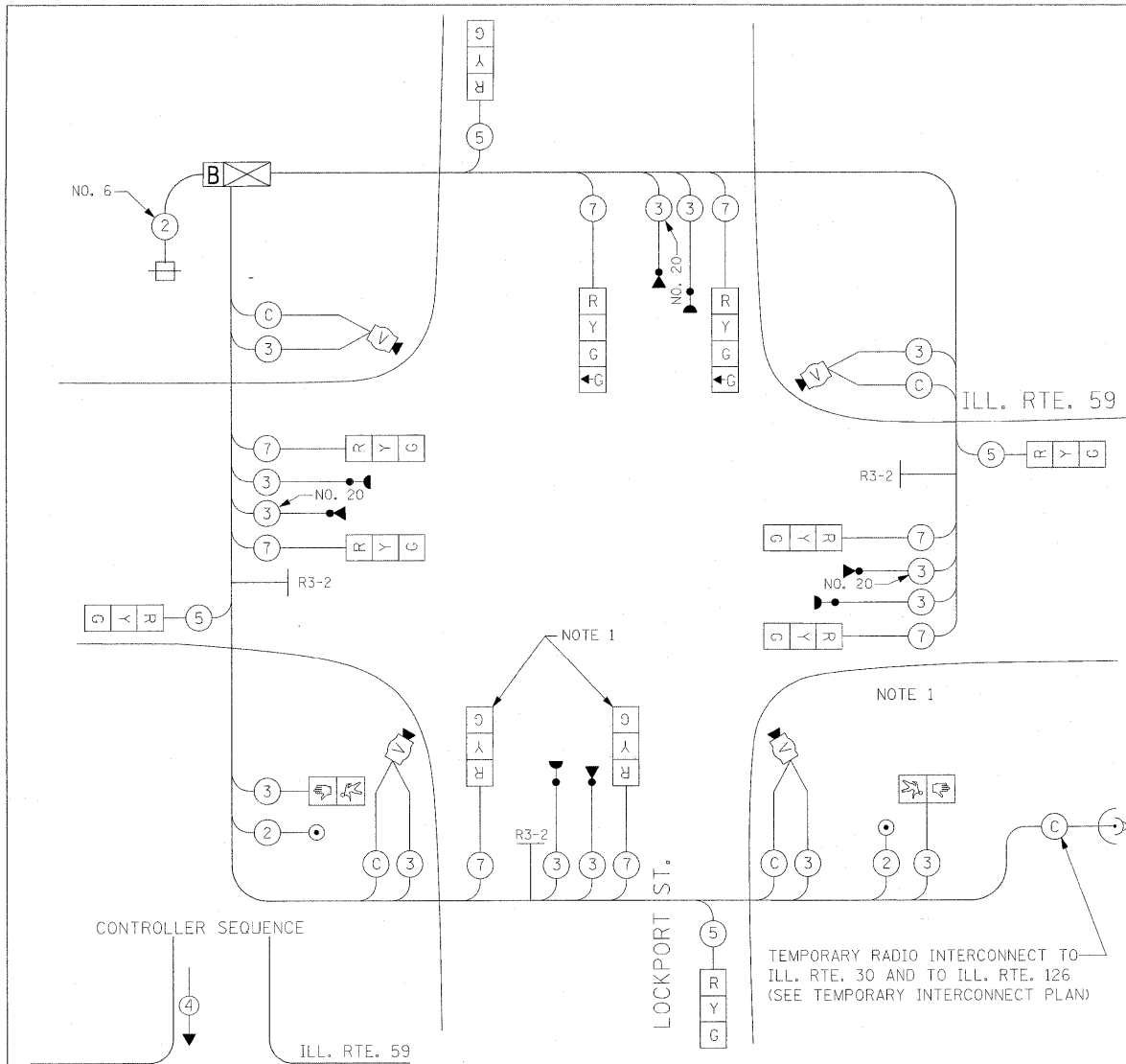
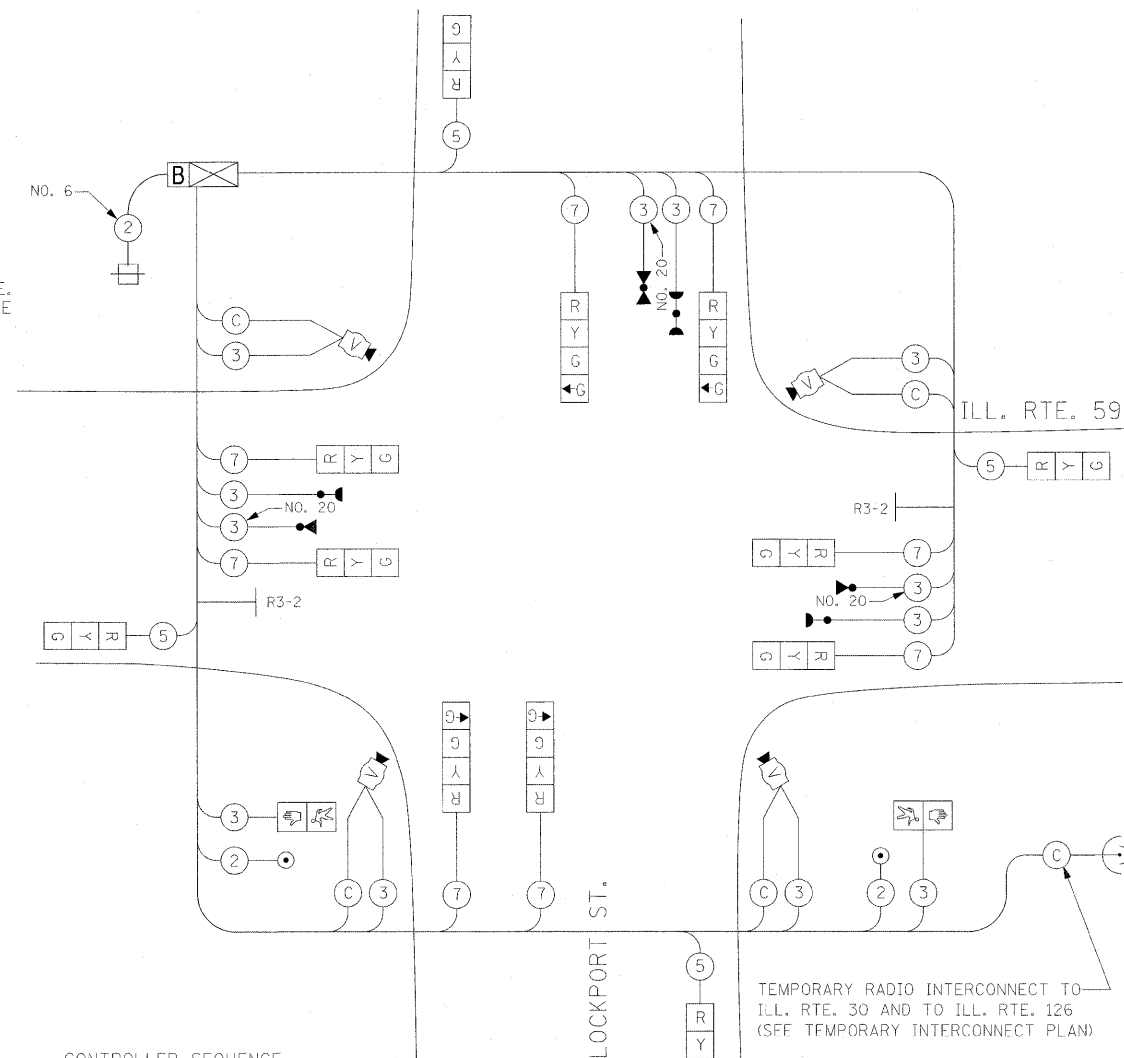


TEMPORARY CABLE DIAGRAM LEGEND

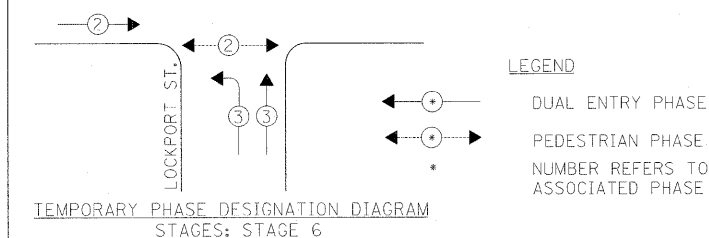
- TEMPORARY TRAFFIC SIGNAL SECTION OR PEDESTRIAN SIGNAL SECTION 12" (300mm)
- TEMPORARY CONTROLLER CABINET
- TEMPORARY SERVICE INSTALLATION
- INDICATES NUMBER OF CONDUCTORS IN CABLE. ALL CONDUCTORS TO BE NUMBER 14 AWG WIRE UNLESS OTHERWISE NOTED.
- EMERGENCY VEHICLE LIGHT DETECTOR
- CONFIRMATION BEACON
- VEHICLE DETECTOR, INDUCTION LOOP
- PEDESTRIAN PUSHBUTTON DETECTOR
- 12" (300mm) PEDESTRIAN SIGNAL SECTION
- MICROWAVE VEHICLE SENSOR
- VIDEO CAMERA ASSEMBLY
- WIRELESS INTERCONNECT (ANTENNA)
- UPS-BATTERY BACK-UP
- NO LEFT TURN (R3-2) SIGN
- R3-2 24"x24"



TEMPORARY CABLE PLAN
STAGES: STAGE 6

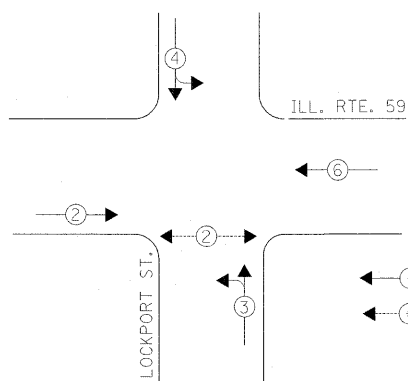


TEMPORARY CABLE PLAN
STAGES: STAGE 6A



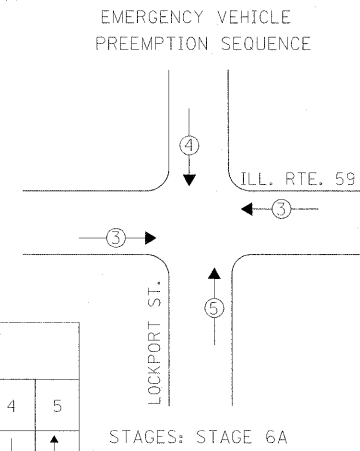
TEMPORARY PHASE DESIGNATION DIAGRAM
STAGES: STAGE 6

- LEGEND
- DUAL ENTRY PHASE
 - PEDESTRIAN PHASE
 - NUMBER REFERS TO ASSOCIATED PHASE



TEMPORARY PHASE DESIGNATION DIAGRAM
STAGES: STAGE 6A

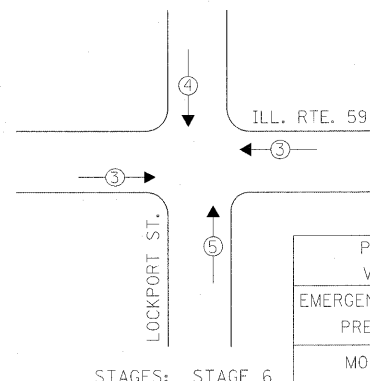
- LEGEND
- DUAL ENTRY PHASE
 - PEDESTRIAN PHASE
 - NUMBER REFERS TO ASSOCIATED PHASE



EMERGENCY VEHICLE PREEMPTION SEQUENCE
STAGES: STAGE 6A

| PROPOSED EMERGENCY VEHICLE PREEMPTORS | | | |
|---------------------------------------|---|---|---|
| EMERGENCY VEHICLE PREEMPTOR | 3 | 4 | 5 |
| MOVEMENT | ↔ | ↓ | ↑ |

EMERGENCY VEHICLE PREEMPTION SEQUENCE
STAGES: STAGE 6



| PROPOSED EMERGENCY VEHICLE PREEMPTORS | | | |
|---------------------------------------|---|---|---|
| EMERGENCY VEHICLE PREEMPTOR | 3 | 4 | 5 |
| MOVEMENT | ↔ | ↓ | ↑ |

THE TRAFFIC SIGNAL WORK IN THIS CONTRACT SHALL BE COORDINATED WITH IDOT CONTRACT 62417.

THE TRAFFIC SIGNAL CONTROL EQUIPMENT FOR THIS PROJECT SHALL BE "ECONOLITE" TO MATCH THE EXISTING ADJACENT SYSTEM.

| I.D.O.T. TRAFFIC SIGNAL INSTALLATION ELECTRICAL SERVICE REQUIREMENTS | | | | | TOTAL WATTAGE |
|--|----------|---------|-----|------------|---------------|
| TYPE | NO LAMPS | WATTAGE | | %OPERATION | |
| SIGNAL (RED) | 12 | 135 | 17 | 0.50 | 102.0 |
| (YELLOW) | 12 | 135 | 25 | 0.25 | 75.0 |
| (GREEN) | 16 | 135 | 15 | 0.25 | 60.0 |
| ARROW | | 135 | 12 | 0.10 | |
| PED. SIGNAL | 2 | 90 | 25 | 1.00 | 50.0 |
| CONTROLLER | 1 | 100 | 100 | 1.00 | 100.0 |
| ILLUM. SIGN | | | | 0.05 | |
| FLASHER | | | | 0.50 | |
| ENERGY COSTS TO: | | | | TOTAL = | 387.0 |

ILLINOIS DEPARTMENT OF TRANSPORTATION
201 WEST CENTER COURT
SCHAUMBURG, ILLINOIS 60196-1096
ENERGY SUPPLY CONTACT: MR. DALE BALLINGER
PHONE: (815) 724-5717
COMPANY: COMED

| | | | |
|-------------|--------------------|---------------------|-----------|
| FILE NAME = | USER NAME = #USER# | DESIGNED - PKG, RRM | REVISED - |
| #FILE# | | DRAWN - BB, ME, YB | REVISED - |
| | | CHECKED - PKG, RRM | REVISED - |
| | | DATE - 10/15/2008 | REVISED - |

STATE OF ILLINOIS
DEPARTMENT OF TRANSPORTATION

TEMPORARY CABLE PLAN, PHASE DESIGNATION DIAGRAM, EMERGENCY VEHICLE PREEMPTION SEQUENCE ILLINOIS ROUTE 59 AT LOCKPORT STREET STAGE 6, STAGE 6 A (SHEET 6 OF 6)
SCALE: SHEET NO. 6 OF 6 SHEETS STA. TO STA.

| | | | |
|--------------------|-----------------|-------------|---------------------------|
| F.A. RTE. 338 | SECTION 113 N-2 | COUNTY WILL | TOTAL SHEET NO. 260 / 189 |
| CONTRACT NO. 60E73 | | | FAP 338 (ILL. RTE. 59) |