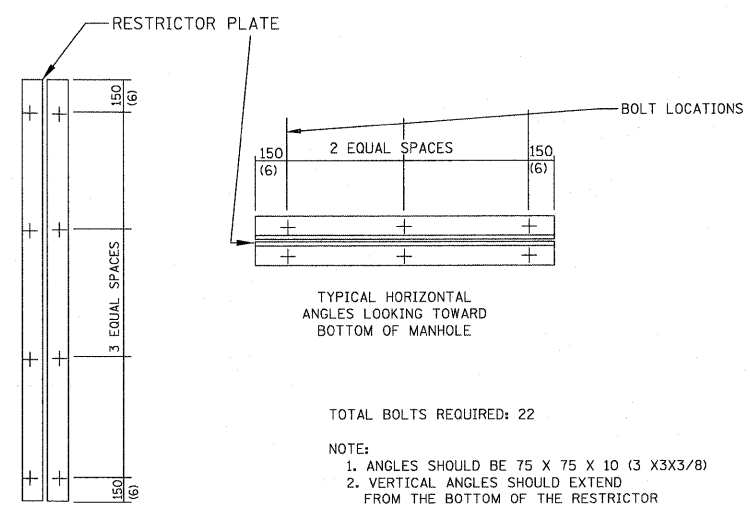


- NOTES:
1. ALL STEEL ANGLES AND PLATES TO BE GALVANIZED AFTER FABRICATION
  2. ALL RESTRICTOR PLATES, ANGLES AND HARDWARE TO BE INCLUDED IN THE COST OF THE MANHOLE.
  3. BASIS OF PAYMENT: "MANHOLES, TYPE A, TYPE I FRAME, CLOSED LID, RESTRICTOR PLATE" EACH, OF THE DIAMETER SPECIFIED

STR #	STATION	OFFSET	MANHOLE DIAMETER	FRAME AND LID	RESTRICTOR TYPE	INSIDE RESTRICTOR TYPE DIAMETER (d)	INVERT OF RESTRICTOR TYPE	ELEVATION OF TOP OF PLATE OVERFLOW	RIM ELEVATION
119	3331+88	22.0' RT	6'	Type 1-CL	2	8"	602.51	606.01	608.92
123	3332+66	22.0' RT	6'	Type 1-CL	2	12"	601.38	606.18	609.31
309	901+90	11.7' RT	6'	Type 1-CL	2	8"	604.50	608.50	611.50
408	3767+42	33.0' LT	6'	Type 1-CL	2	8"	601.56	606.56	610.08



1	2	3	4	5	6
RE-ENTRANT TUBE	SHARP EDGES	SQUARE EDGED	RE-ENTRANT TUBE	SQUARE EDGED	ROUNDED
LENGTH 1/2 TO 1 DIA.		STREAM CLEARS SIDES	LENGTH 2-1/2 DIA.	LENGTH 2-1/2 DIA.	
C=.52	C=.61	C=.61	C=.73	C=.82	C=.98

VALUES OF "C" FOR CIRCULAR AND SQUARE ORIFICES

ALL DIMENSIONS ARE IN MILLIMETERS (INCHES) UNLESS OTHERWISE SHOWN

- TOTAL BOLTS REQUIRED: 22
- NOTE:
1. ANGLES SHOULD BE 75 X 75 X 10 (3 X3X3/8)
  2. VERTICAL ANGLES SHOULD EXTEND FROM THE BOTTOM OF THE RESTRICTOR PLATE TO THE TOP
  3. HORIZONTAL ANGLES SHOULD EXTEND FROM VERTICAL ANGLE TO VERTICAL ANGLE

TYPICAL VERTICAL ANGLES LOOKING TOWARD MANHOLE WALL

STEEL ANGLE BOLTING DETAILS