

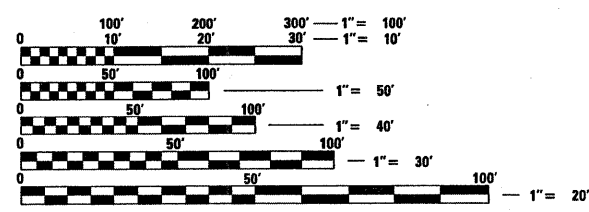
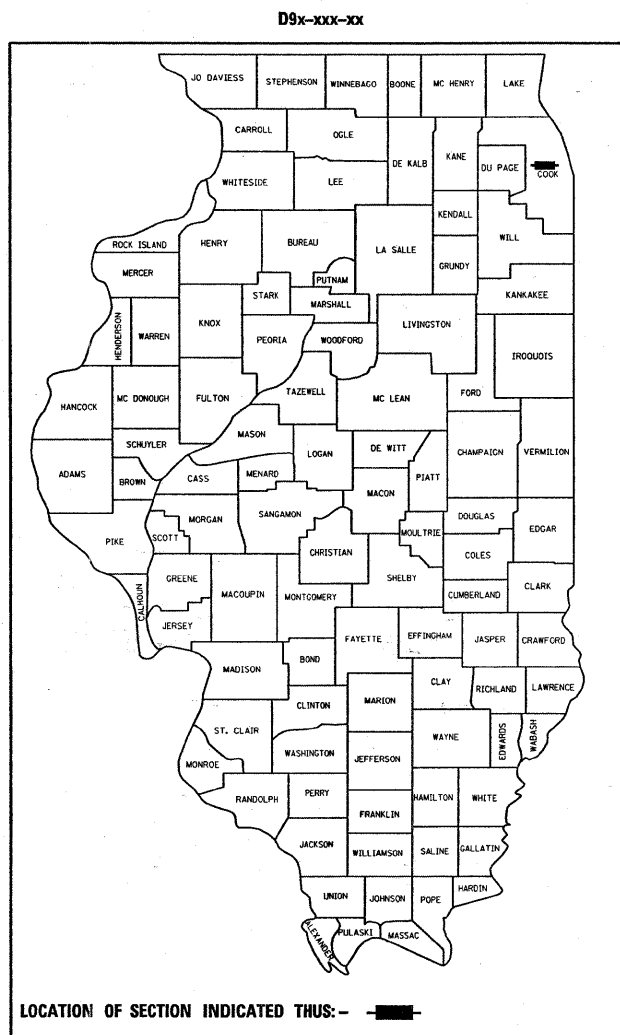
F.A.I. RTE.	SECTION	COUNTY	TOTAL SHEETS	SHEET NO.
290	2008-055 I	COOK	33	1
FED. ROAD DIST. NO. 1	ILLINOIS	CONTRACT NO. 60F10		

**STATE OF ILLINOIS  
DEPARTMENT OF TRANSPORTATION  
DIVISION OF HIGHWAYS**

**PROPOSED  
HIGHWAY PLANS  
FAI ROUTE: 290/1-290 ( EASTBOUND)  
25TH AVENUE TO I-90/94  
SECTION: 2008-055 I  
SEAL COAT (INSIDE & OUTSIDE SHOULDERS)  
COOK COUNTY  
C-91-031-09**

FOR INDEX OF SHEETS, SEE SHEET NO. 2

IMPROVEMENT IS LOCATED IN THE VILLAGES  
OF BELLWOOD, BROADVIEW, MAYWOOD, FOREST PARK,  
OAK PARK, AND THE CITY OF CHICAGO

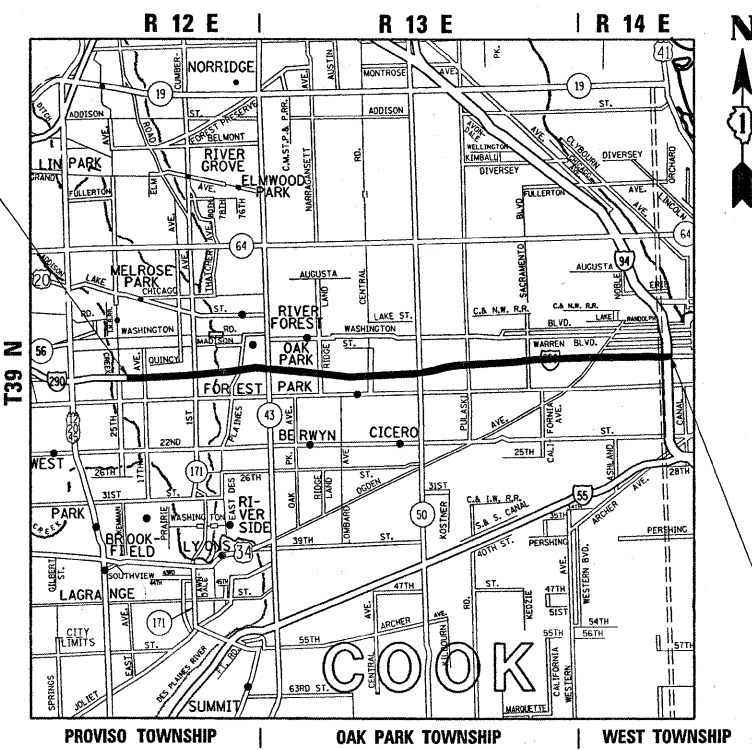


FULL SIZE PLANS HAVE BEEN PREPARED USING STANDARD ENGINEERING SCALES. REDUCED SIZED PLANS WILL NOT CONFORM TO STANDARD SCALES. IN MAKING MEASUREMENTS ON REDUCED PLANS, THE ABOVE SCALES MAY BE USED.

J.U.L.I.E.  
JOINT UTILITY LOCATION INFORMATION FOR EXCAVATION  
1-800-892-0123 (OR 811)  
OR CUAN, 312 - 744 - 7000

**OMISSION: INSIDE SHOULDER**  
STATION 23+66 - STATION 104+70  
STATION 122+21 - STATION 125+08  
STATION 143+50 - STATION 169+30  
STATION 276+96 - STATION 596+13

**OMISSION: OUTSIDE SHOULDER**  
STATION 111+05 - STATION 120+55  
STATION 121+85 - STATION 137+84  
STATION 164+37 - STATION 281+66



**TRAFFIC DATA**  
1995 ADT = 239,400  
SPEED LIMIT = 55 MPH

**IMPROVEMENT BEGINS  
STATION 619+64**

**PROJECT ENGINEER: JENPAI P. CHANG (847) 705 - 4432**  
**PROJECT MANAGER: KEN ENG**  
**CONTRACT NO. 60F10**

**GROSS LENGTH OF IMPROVEMENT = 59,598.00 FEET = 11.29 MILES**  
**NET LENGTH OF IMPROVEMENT = 45,340.00 FEET = 8.59 MILES**

STATE OF ILLINOIS  
DEPARTMENT OF TRANSPORTATION  
DIVISION OF HIGHWAYS

SUBMITTED DECEMBER 16, 20 08

*Diana M. O'Keefe*  
DEPUTY DIRECTOR OF HIGHWAYS, REGION ENGINEER

January 30, 20 09  
*Charles J. Ingersoll*  
ENGINEER OF DESIGN AND ENVIRONMENT

January 30, 20 09  
*Christine M. Reed*  
DIRECTOR OF HIGHWAYS, CHIEF ENGINEER

**PRINTED BY THE AUTHORITY  
OF THE STATE OF ILLINOIS**