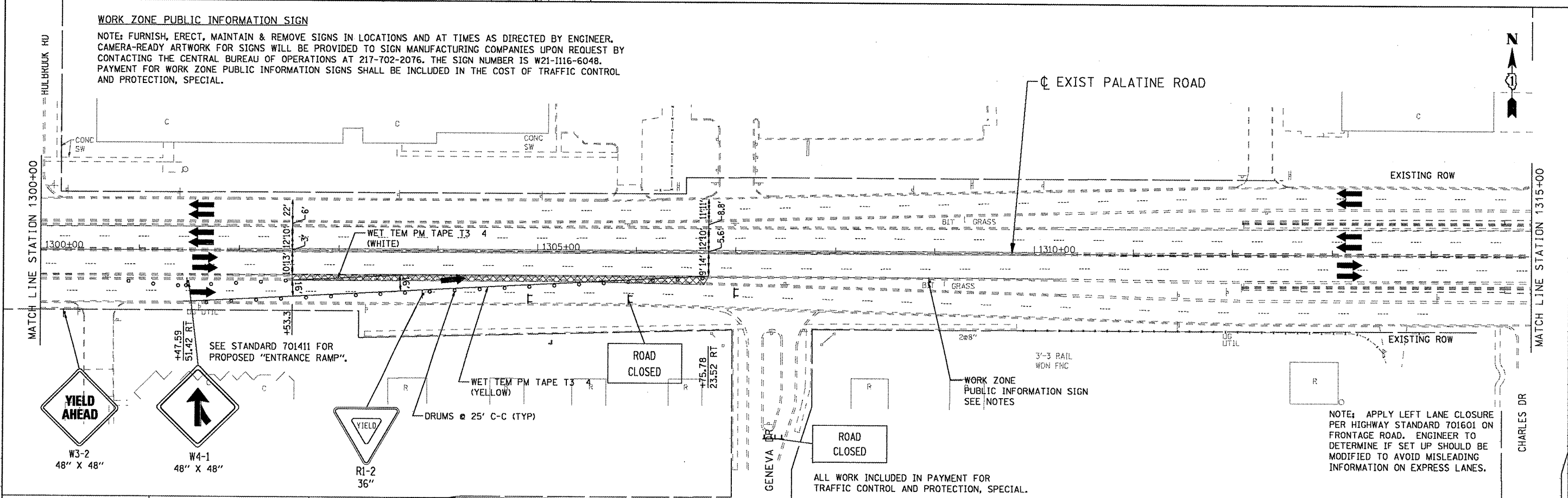


**LEGEND**

	TYPE III BARRICADE
	TRAFFIC DIRECTION
	DRUMS (25' C-C)
	TEMPORARY PAVEMENT

**WORK ZONE PUBLIC INFORMATION SIGN**  
 NOTE: FURNISH, ERECT, MAINTAIN & REMOVE SIGNS IN LOCATIONS AND AT TIMES AS DIRECTED BY ENGINEER. CAMERA-READY ARTWORK FOR SIGNS WILL BE PROVIDED TO SIGN MANUFACTURING COMPANIES UPON REQUEST BY CONTACTING THE CENTRAL BUREAU OF OPERATIONS AT 217-702-2076. THE SIGN NUMBER IS W21-1116-6048. PAYMENT FOR WORK ZONE PUBLIC INFORMATION SIGNS SHALL BE INCLUDED IN THE COST OF TRAFFIC CONTROL AND PROTECTION, SPECIAL.



NOTE: APPLY LEFT LANE CLOSURE PER HIGHWAY STANDARD 701601 ON FRONTAGE ROAD. ENGINEER TO DETERMINE IF SET UP SHOULD BE MODIFIED TO AVOID MISLEADING INFORMATION ON EXPRESS LANES.

ALL WORK INCLUDED IN PAYMENT FOR TRAFFIC CONTROL AND PROTECTION, SPECIAL.

FILE NAME =	USER NAME = zpiend	DESIGNED - DLP	REVISED -
G:\projects\2082305\CADD\Civil\Sheet\03\03PLMLMTL01.dgn		DRAWN - ENTRAN	REVISED -
		CHECKED - TMH	REVISED -
		DATE - 1/09	REVISED -

**STATE OF ILLINOIS  
 DEPARTMENT OF TRANSPORTATION**

**WEST AND EAST FRONTAGE ROADS  
 MAINTENANCE OF STAGING, NOTES & LEGEND**

SCALE: 1"=50' SHEET NO. OF SHEETS STA. TO STA.

F.A.P. RTE.	SECTION	COUNTY	TOTAL SHEETS	SHEET NO.
305	1415 B	COOK	75	17
FED. ROAD DIST. NO.			ILLINOIS FED. AID PROJECT	
			CONTRACT NO. 60F60	