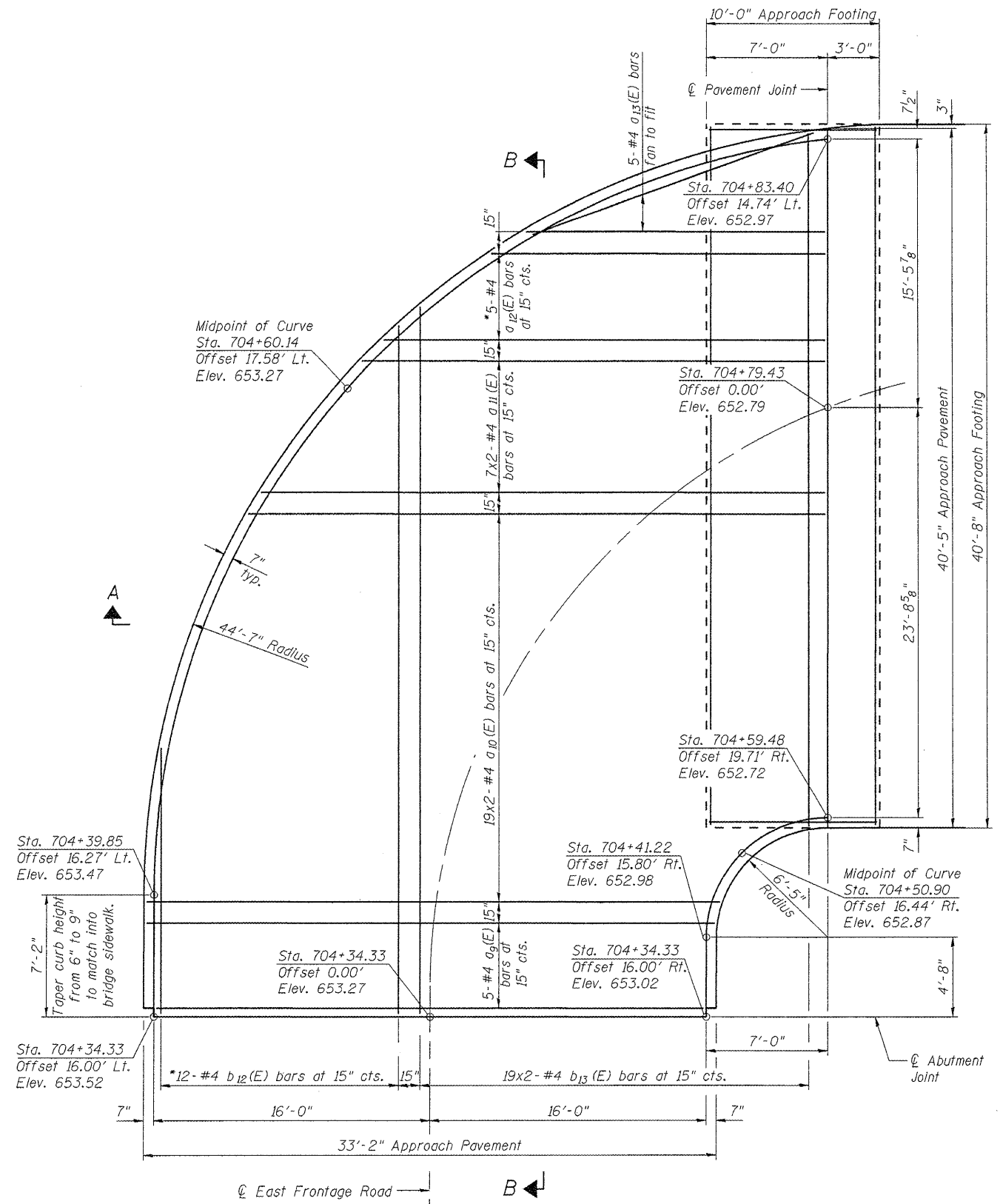


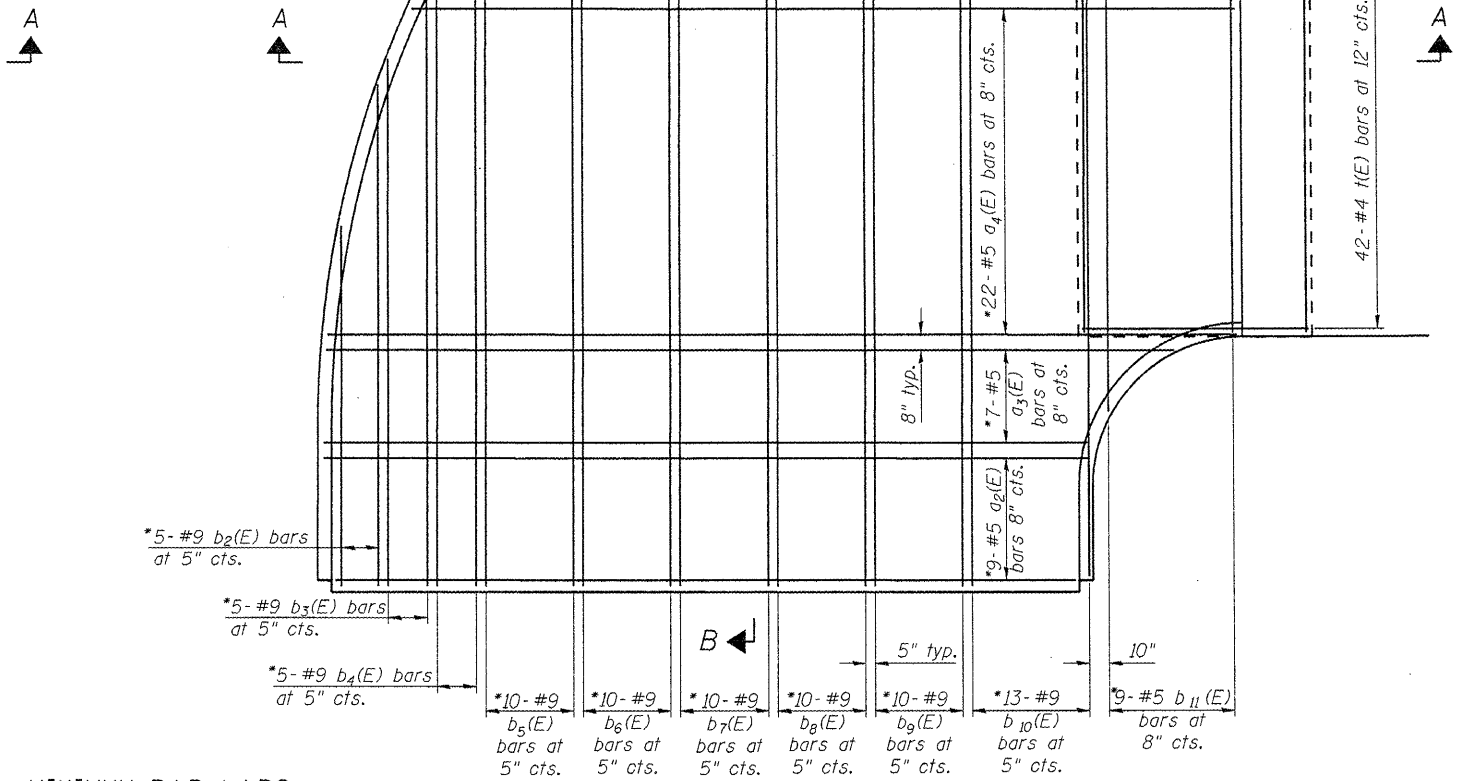
STATE OF ILLINOIS
DEPARTMENT OF TRANSPORTATION



TOP OF SLAB REINFORCEMENT
(Including Approach Slab Layout)

MINIMUM BAR LAPS
(Approach Slab)
#4 bar = 1'-8"
#5 bar = 2'-2"

Notes:
See Sheet 7 of 15 for Section A-A, Section B-B, and pavement joint detail.
See Sheet 3 of 15 for abutment joint detail.
*Cut reinforcement bars to fit.



BOTTOM OF SLAB AND APPROACH FOOTING REINFORCEMENT

NORTH BRIDGE APPROACH SLAB
STRUCTURE NO. 016-2529

DESIGNED -	BPS
CHECKED -	GSP
DRAWN -	BPS/MJB
CHECKED -	GSP

SHEET NO. 6 15 SHEETS	F.A.P. RTE.	SECTION	COUNTY	TOTAL SHEETS	SHEET NO.
	305	1415 B	COOK	75	29
FED. ROAD DIST. NO. 7 ILLINOIS FED. AID PROJECT					



g:\projects\2082305\cadd\structural\sh\0162529-BA2.dgn