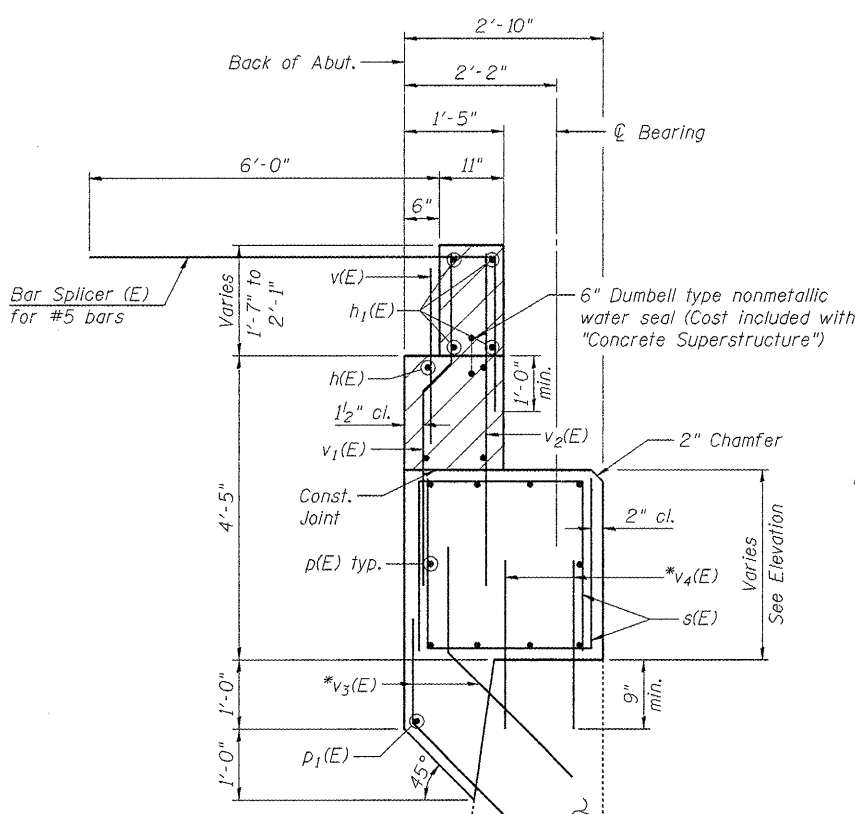


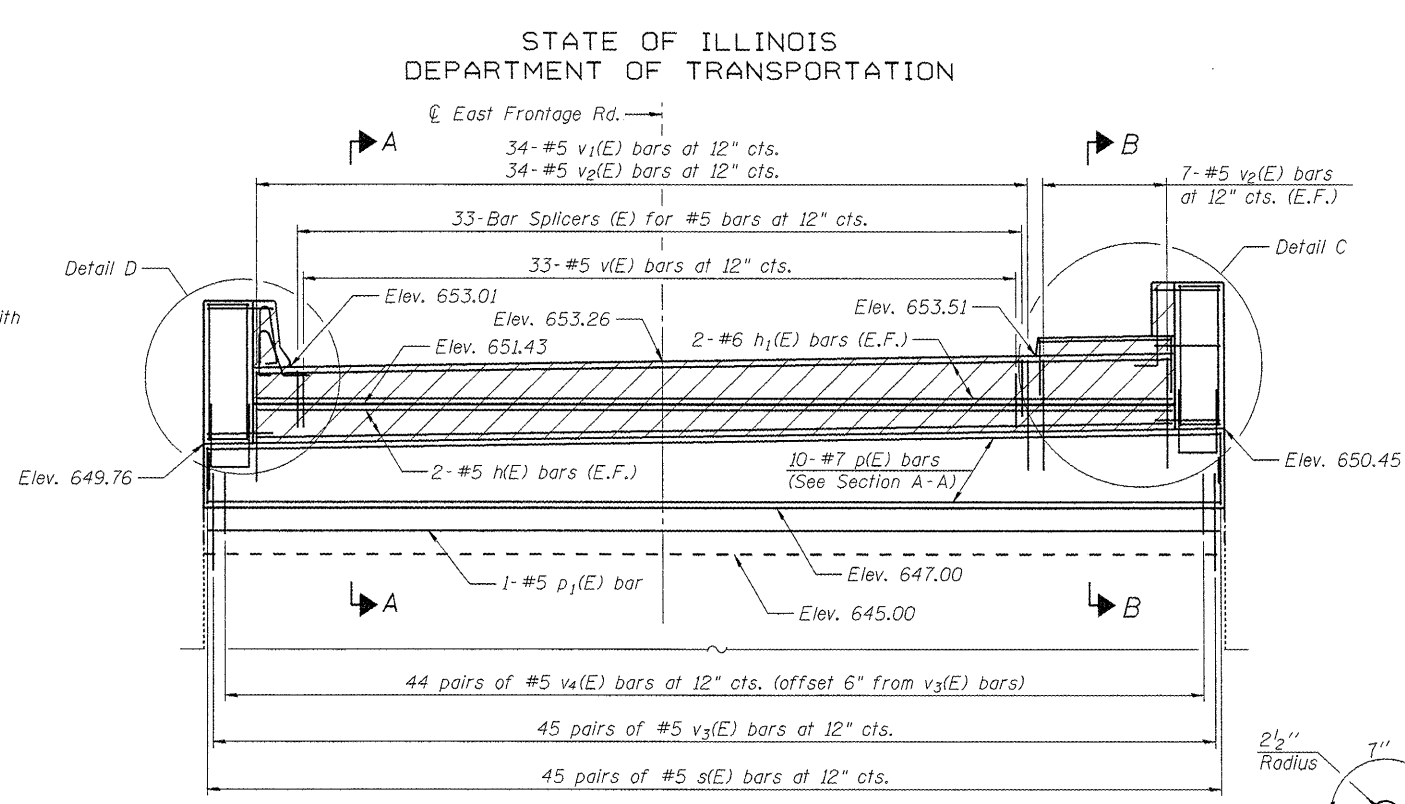
STATE OF ILLINOIS
DEPARTMENT OF TRANSPORTATION

East Frontage Rd.

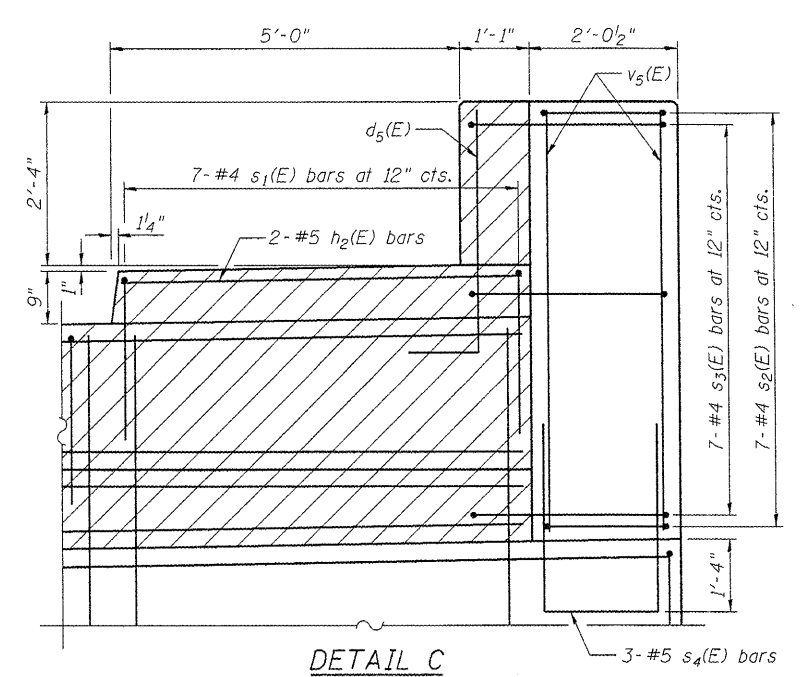


SECTION A-A

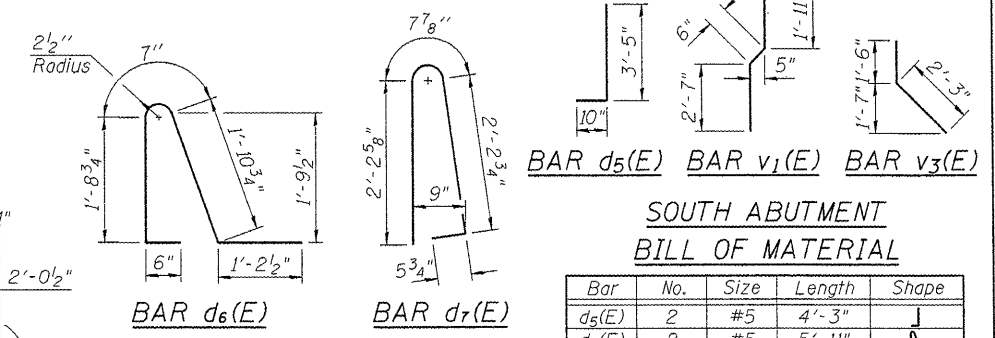
*Drill and grout #5 v3(E) and v4(E) bars in 7/8"φ x 9" min. holes according to Section 584 of the Standard Specifications. Cost included with "Reinforcement Bars, Epoxy Coated."



ELEVATION
(Looking South)

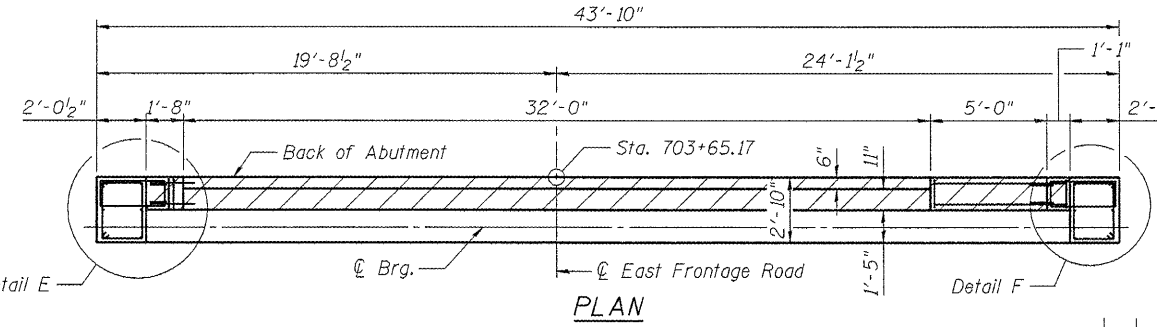


DETAIL C

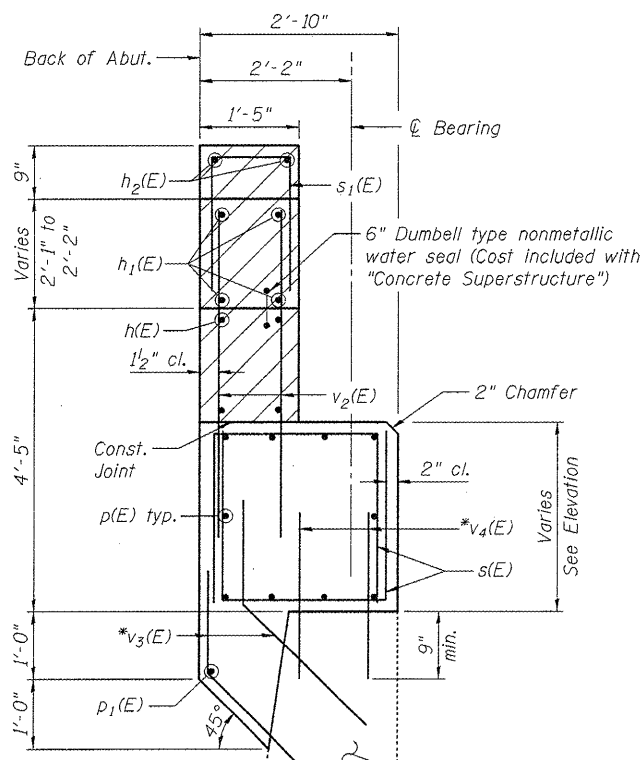


SOUTH ABUTMENT
BILL OF MATERIAL

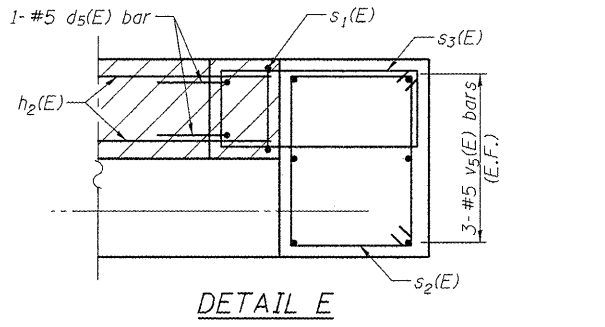
Bar	No.	Size	Length	Shape
d5(E)	2	#5	4'-3"	J
d6(E)	2	#5	5'-11"	J
d7(E)	2	#5	5'-7"	J
h(E)	4	#5	39'-3"	—
h1(E)	4	#6	39'-3"	—
h2(E)	2	#5	5'-8"	—
p(E)	10	#7	43'-6"	—
p1(E)	1	#5	43'-6"	—
s(E)	90	#5	7'-0"	□
s1(E)	7	#4	4'-11"	□
s2(E)	14	#4	9'-1"	□
s3(E)	14	#4	8'-5"	□
s4(E)	6	#5	8'-0"	□
v(E)	33	#5	2'-10"	—
v1(E)	34	#5	5'-0"	—
v2(E)	48	#5	4'-9"	—
v3(E)	90	#5	3'-9"	—
v4(E)	88	#5	2'-8"	—
v5(E)	6	#5	5'-10"	—
v6(E)	6	#5	5'-9"	—
Structure Excavation		Cu. Yd.		25
Concrete Structures		Cu. Yd.		19.3
Reinforcement Bars, Epoxy Coated		Pound		3,460
Concrete Sealer		Sq. Ft.		320



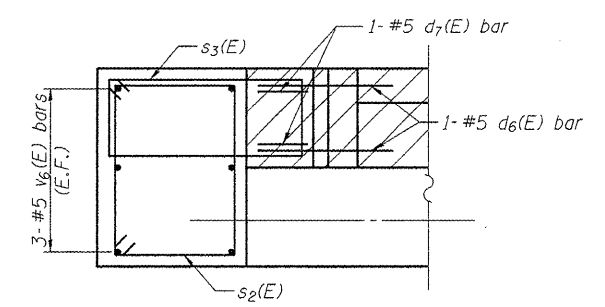
PLAN



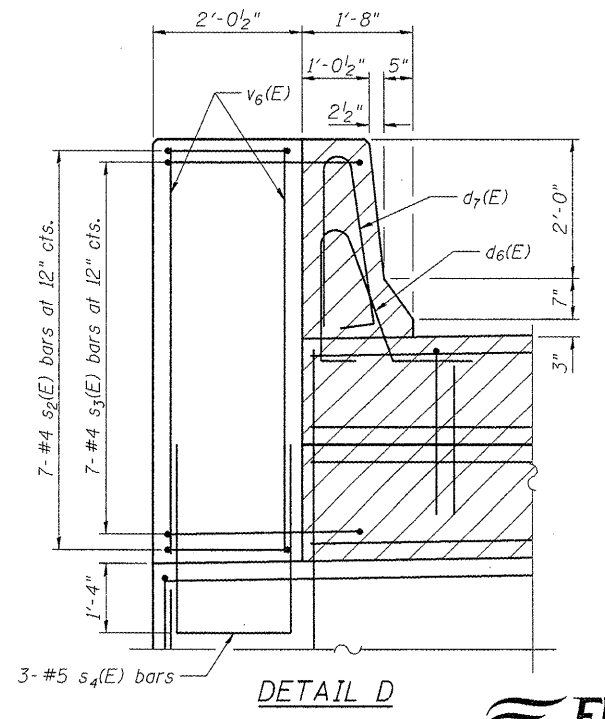
SECTION B-B



DETAIL E



DETAIL F



DETAIL D

Notes:
Hatched area to be poured after Concrete Wearing Surface is in place. Quantity of concrete included with Concrete Superstructure.
For details of Bar Splicers, see Sheet 15 of 15.
Existing reinforcement shall be cleaned and incorporated into the new construction. Cost included with "Concrete Removal."

DESIGNED -	BPS
CHECKED -	GSP
DRAWN -	BPS/MJB
CHECKED -	GSP

SOUTH ABUTMENT
STRUCTURE NO. 016-2529

SHEET NO. 13	F.A.P. RTE.	SECTION	COUNTY	TOTAL SHEETS	SHEET NO.
	305	1415 B	COOK	75	36
15 SHEETS	CONTRACT NO. 60F60		FED. ROAD DIST. NO. 7 ILLINOIS FED. AID PROJECT		



g:\proj\2082305\cadd\structural\sh3\0162529-ABS.dgn