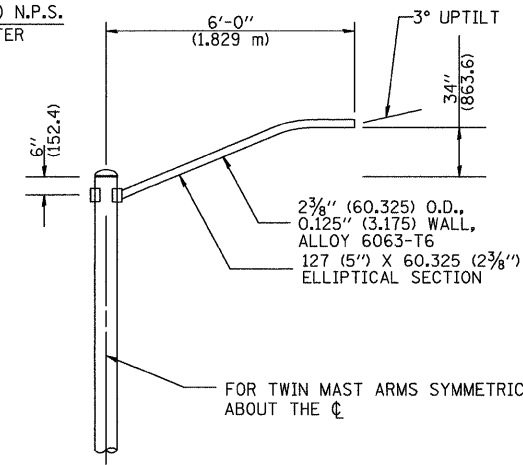


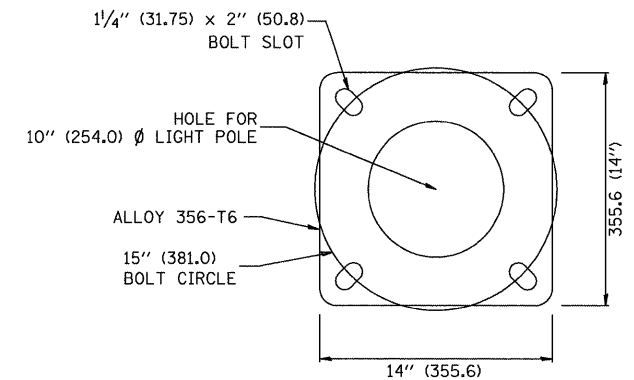
F.A. RTE.	SECTION	COUNTY	TOTAL SHEETS	SHEET NO.
332	2008-081.L	COOK	18	17
STA. TO STA.		FED. ROAD DIST. NO. ILLINOIS FED. AID PROJECT		

NOTES:

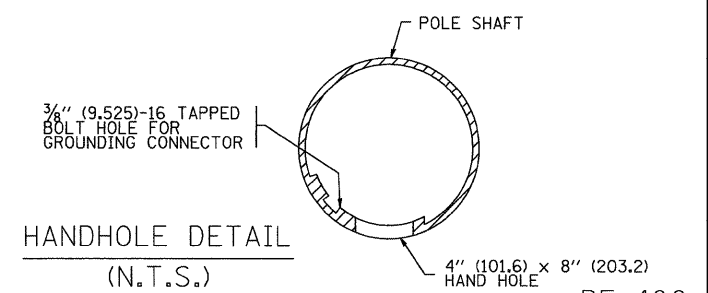
1. ALL DIMENSIONS ARE IN INCHES (MILLIMETERS) UNLESS OTHERWISE SHOWN.
2. MOUNTING HEIGHT IS DEFINED AS THE DISTANCE FROM THE CENTERLINE OF THE TENON TO THE BOTTOM OF THE ANCHOR BASE.
3. TWO PIECE SHAFT WILL BE MATCHED MARKED AND INTERCHANGEABLE BETWEEN DIFFERENT UNITS. FIELD DRILLING OF THE HOLES WILL NOT BE ALLOWED.
4. THE LIGHT POLE WILL MEET AASHTO DESIGN CRITERIA AS SPECIFIED.
5. THE INSTALLING CONTRACTOR WILL PROVIDE A UL LISTED GROUNDING CONNECTOR. BURNDY K2C23, T&B SP4DL OR APPROVED EQUAL.
6. LIGHT POLES WILL NOT BE INSTALLED WITHOUT MAST ARMS AND LUMINAIRES.
7. LIGHT POLES WILL BE SET PLUMB ON THE FOUNDATION WITHOUT THE USE OF LEVELING NUTS, WASHERS OR SHIMS.
8. LIGHTING UNIT IDENTIFICATION NUMBERS SHALL BE INSTALLED BEFORE THE LIGHTING UNIT IS ENERGIZED.



6' (1.8 m) SINGLE MEMBER MAST ARM (N.T.S.)



LIGHT POLE BASE PLATE DETAIL
15 INCH (381.0) BOLT CIRCLE



HANDHOLE DETAIL (N.T.S.)

REVISIONS	
NAME	DATE
R. TOMSONS	9-6-00
R. TOMSONS	8-12-03

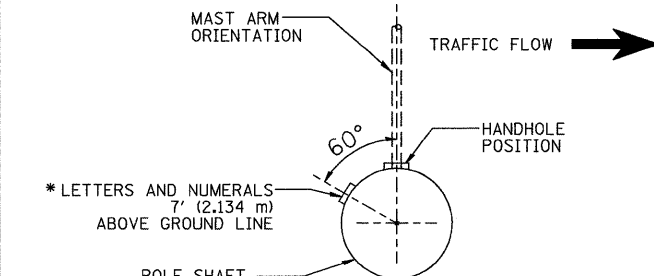
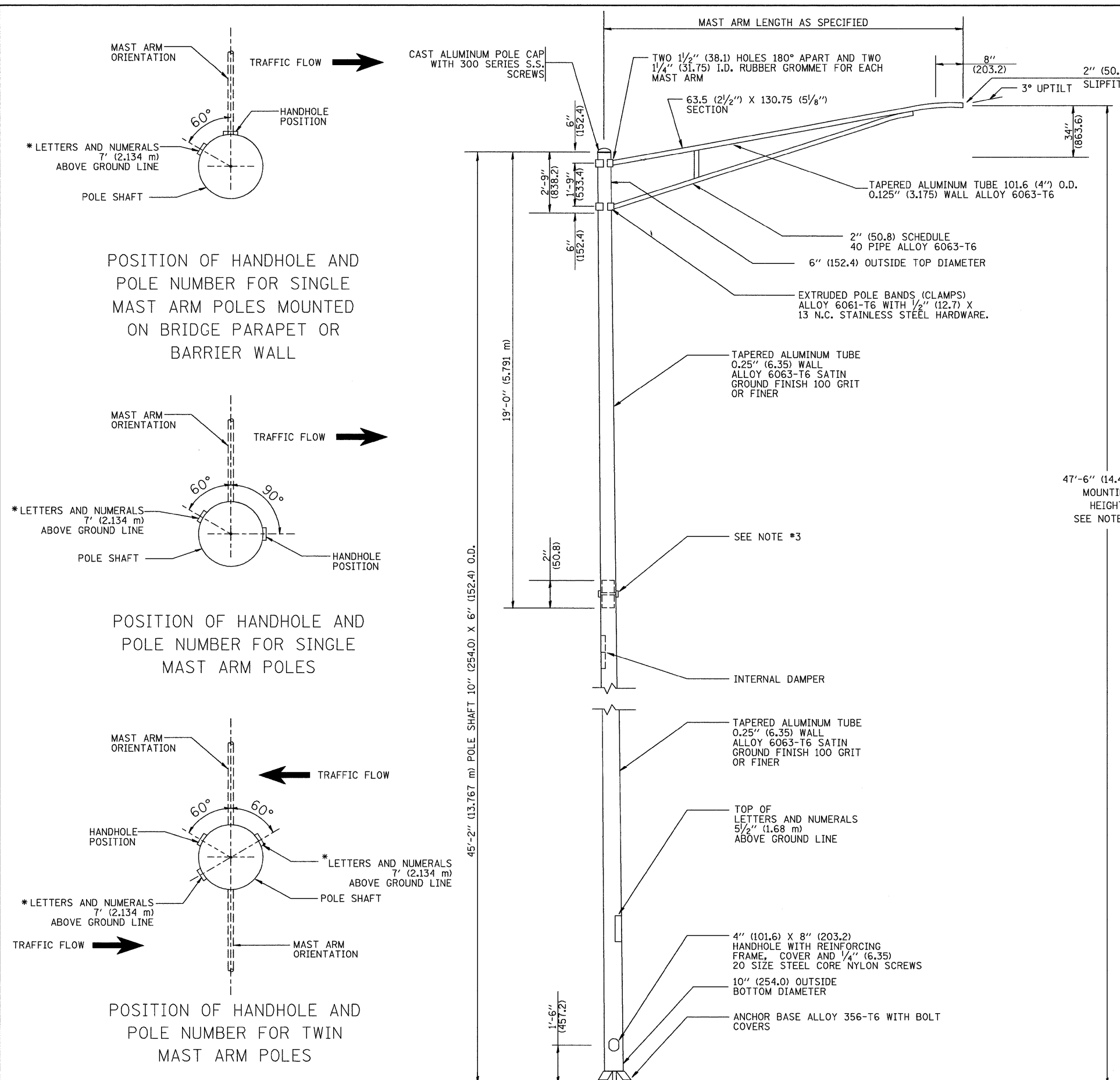
ILLINOIS DEPARTMENT OF TRANSPORTATION

ALUMINUM LIGHT POLE
47'-6" (14.478 m)
MOUNTING HEIGHT

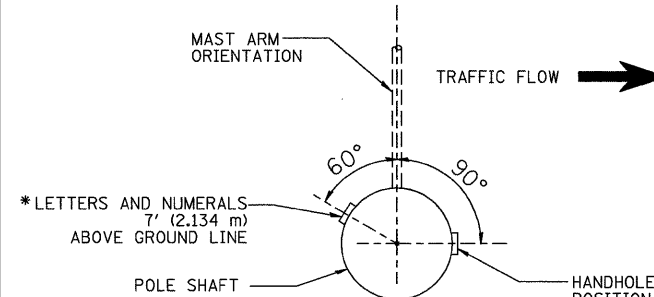
SCALE: NONE
DATE: 1/10/2007

DRAWN BY
CHECKED BY

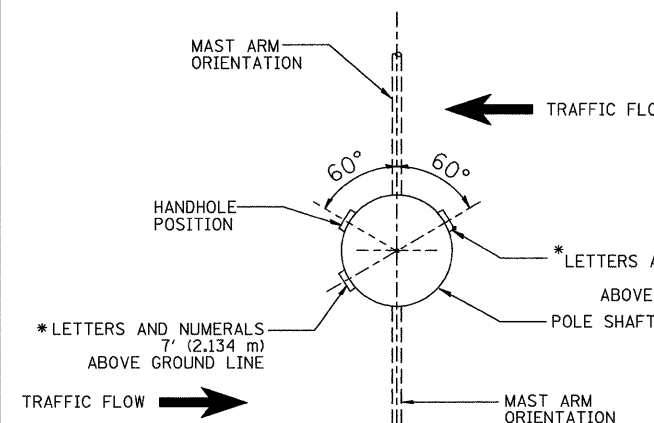
3/5/2009 P:\2009\C9X93600\CADD\Sheets\Lighting\Proposed_Sheet_15_BE400.dgn



POSITION OF HANDHOLE AND POLE NUMBER FOR SINGLE MAST ARM POLES MOUNTED ON BRIDGE PARAPET OR BARRIER WALL



POSITION OF HANDHOLE AND POLE NUMBER FOR SINGLE MAST ARM POLES



POSITION OF HANDHOLE AND POLE NUMBER FOR TWIN MAST ARM POLES

FILE NAME =	USER NAME = default	DESIGNED -	REVISED -
P:\2009\C9X93600\CADD\Sheets\Lighting\Proposed_Sheet_15_BE400.dgn	Proposed_Sheet_15_BE400.dgn	DRAWN -	REVISED -
PLOT SCALE = #SCALE#		CHECKED -	REVISED -
PLOT DATE = 3/5/2009		DATE -	REVISED -

STATE OF ILLINOIS
DEPARTMENT OF TRANSPORTATION

ALUMINUM LIGHT POLE 47'-6" (14.478 m) MOUNTING HEIGHT BE-400				
SCALE: N.T.S.	SHEET NO.	OF SHEETS	STA. -	TO STA. -
F.A.P. RTE.	SECTION	COUNTY	TOTAL SHEETS	SHEET NO.
332	2008-081 L	COOK	18	17
CONTRACT NO. 60F83				