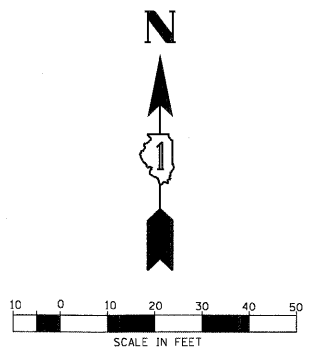


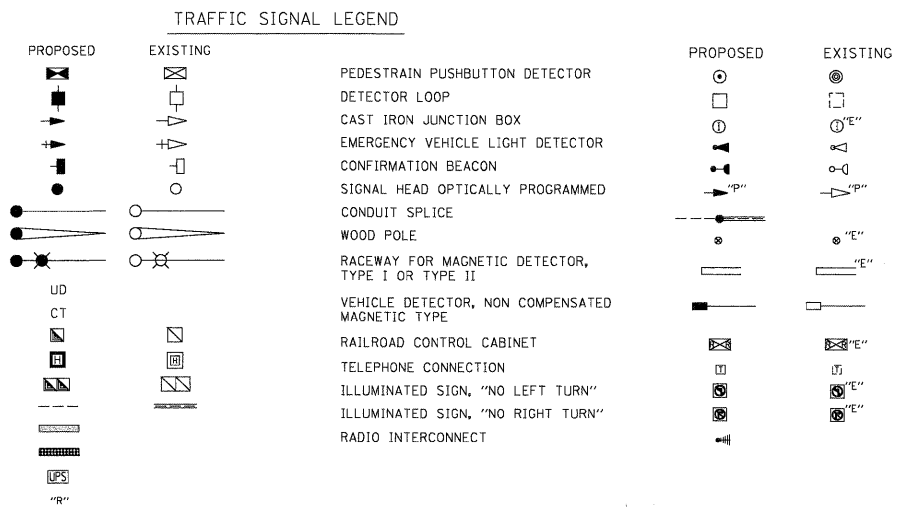
1/27/2009

CONSTRUCTION NOTES:

1. INSTALL NEW CONTROLLER AND TYPE IV CABINET (SPECIAL), RELOCATE EXISTING EMERGENCY VEHICLE PRIORITY SYSTEM, PHASING UNIT TO NEW CONTROLLER CABINET AND RELOCATE DETECTOR UNIT ON NEW MAST ARM. RELOCATION OF THE EMERGENCY PRIORITY SYSTEM EQUIPMENT WILL BE INCLUDED IN THE NEW CONTROLLER AND TYPE IV CABINET (SPECIAL) UNIT PRICE.
2. CONCRETE MEDIAN SURFACES SHALL BE PAID FOR AS PORTLAND CEMENT CONCRETE SIDEWALK 5 INCH.
3. CONCRETE WORK SHALL BE COMPLETED AFTER ALL TRAFFIC SIGNAL AND STREET LIGHTING CONDUITS ARE INSTALLED.

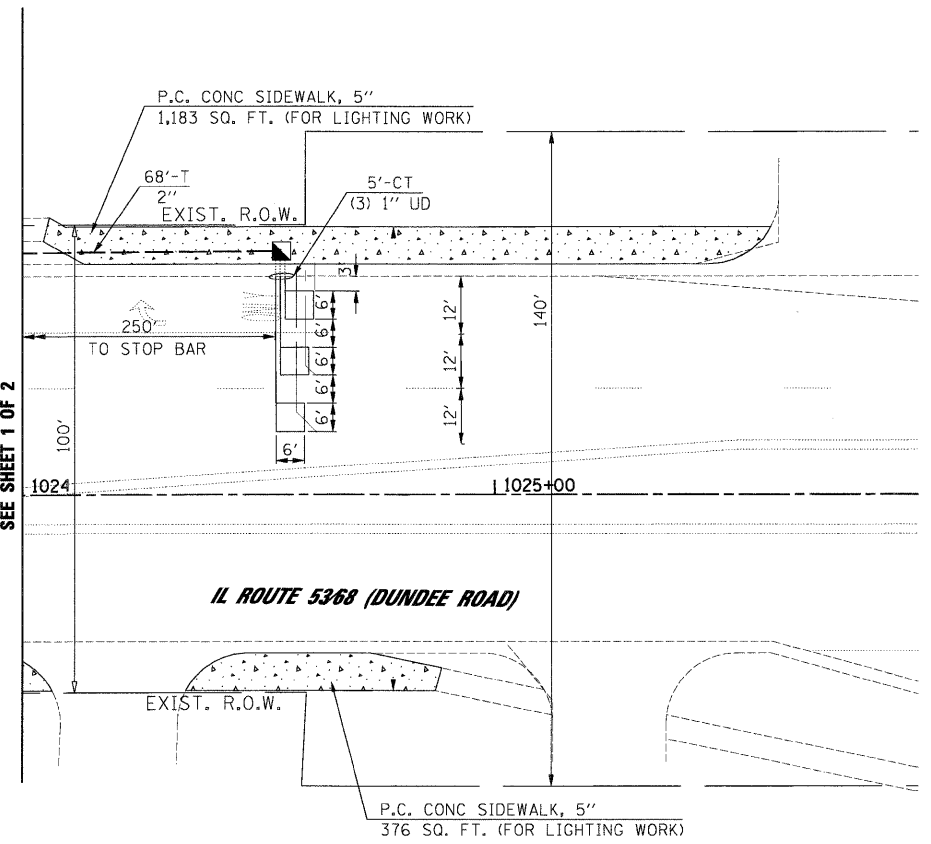
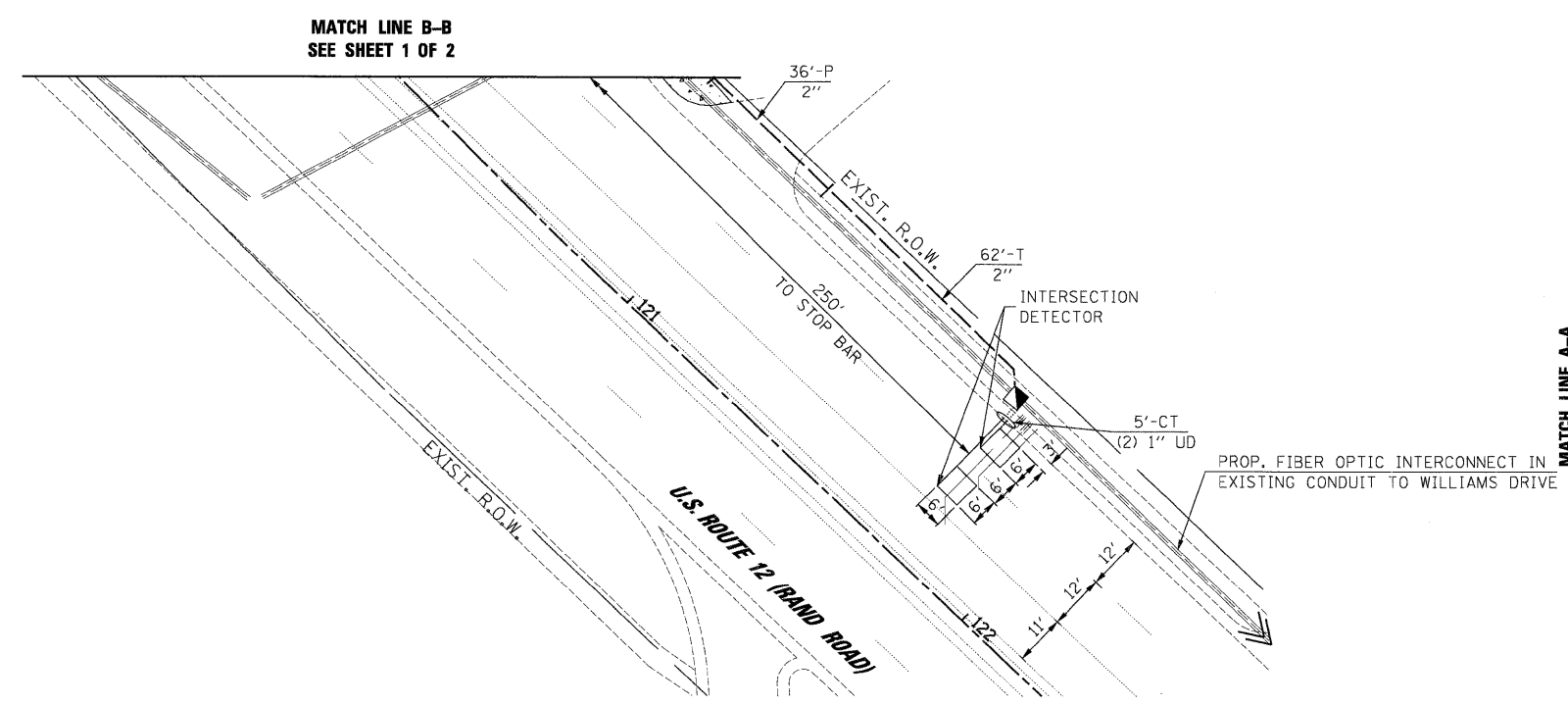


- CONTROLLER
- SERVICE INSTALLATION
- SIGNAL HEAD
- SIGNAL HEAD WITH BACKPLATE
- SIGNAL HEAD, PEDESTRIAN
- SIGNAL POST
- MAST ARM ASSEMBLY AND POLE, STEEL
- MAST ARM ASSEMBLY AND POLE, ALUMINUM
- MAST ARM ASSEMBLY AND POLE, STEEL WITH LUMINAIRE
- UNIT DUCT
- COMMON TRENCH
- HANDHOLE
- HEAVY DUTY HANDHOLE
- DOUBLE HANDHOLE
- G.S. CONDUIT IN TRENCH OR PUSHED
- DEPRESSED CURB
- DETECTABLE WARNING TILE
- UNINTERRUPTIBLE POWER SUPPLY RELOCATED



RESTORATION OF WORK AREA, RESTORATION OF THE TRAFFIC SIGNAL WORK AREA SHALL BE INCIDENTAL TO THE RELATED PAY ITEM SUCH AS FOUNDATION, CONDUIT, HANDHOLE, TRENCH AND BACKFILL, ETC., AND NO EXTRA COMPENSATION SHALL BE ALLOWED. ALL ROADWAY SURFACES SUCH AS SHOULDERS, MEDIANS, SIDEWALKS, PAVEMENT, ETC. SHALL BE REPLACED IN KIND. ALL DAMAGE TO MOWED LAWNS SHALL BE REPLACED WITH AN APPROVED SOD, AND ALL DAMAGE TO UNMOWED FIELDS SHALL BE SEEDED IN ACCORDANCE WITH STANDARD SPECIFICATIONS 252 AND 250 RESPECTIVELY.

NOTE:
THE TRAFFIC SIGNAL CONTROLLER EQUIPMENT FOR THIS PROJECT SHALL BE "ECONOLITE" TO MATCH THE EXISTING ADJACENT SYSTEM.



FILE NAME =	USER NAME = #USER#
09_SignalPlan_Rand&Dundee.dgn	
PLOT SCALE = #SCALE#	
PLOT DATE = 1/27/2009	

DESIGNED - CH	REVISED -
DRAWN - MP, AG	REVISED -
CHECKED - MJL	REVISED -
DATE - 1/22/2009	REVISED -

STATE OF ILLINOIS
DEPARTMENT OF TRANSPORTATION

TRAFFIC SIGNAL MODERNIZATION PLAN - SHEET 2 OF 2
U.S. ROUTE 12 (RAND ROAD) AND IL ROUTE 53 / 68 (DUNDEE ROAD)

SCALE: 1"=20' SHEET NO. OF SHEETS STA. TO STA.

JACOBS		ONE NORTH FRANKLIN CHICAGO IL, 60606 312-251-3000		
F.A.P. RTE.	SECTION	COUNTY	TOTAL SHEETS	SHEET NO.
334	2008-08-31	COOK	80	19
CONTRACT NO. 60F87				
FED. ROAD DIST. NO.		ILLINOIS FED. AID PROJECT		

PA_2009\C9137208\CADD\Sheet\108_SignalPlan_Rand&Dundee.dgn