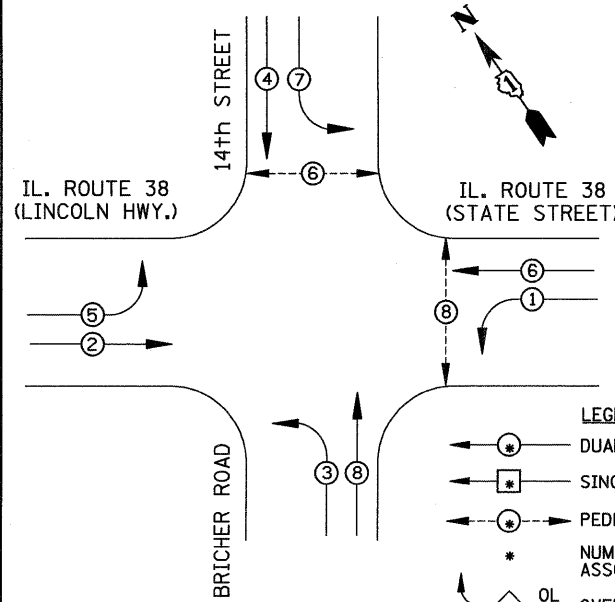
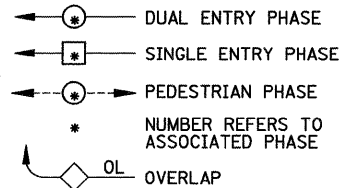


CONTROLLER SEQUENCE

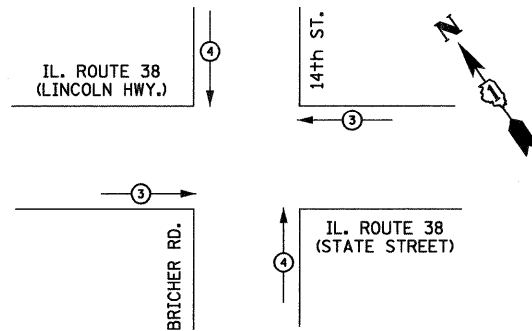


LEGEND



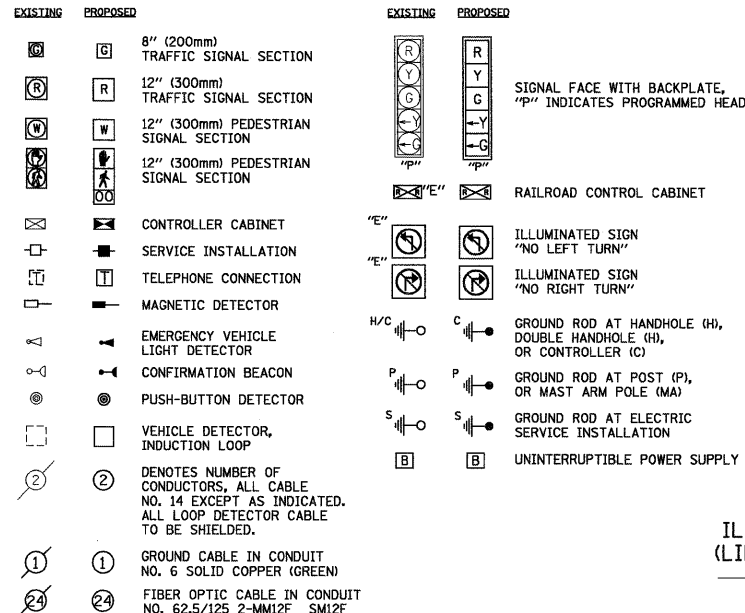
PHASE DESIGNATION DIAGRAM

EMERGENCY VEHICLE PREEMPTION SEQUENCE



PROPOSED EMERGENCY VEHICLE PREEMPTOR		
EMERGENCY VEHICLE PREEMPTOR	3	4
MOVEMENT	→	↑

CABLE PLAN LEGEND



SCHEDULE OF QUANTITIES

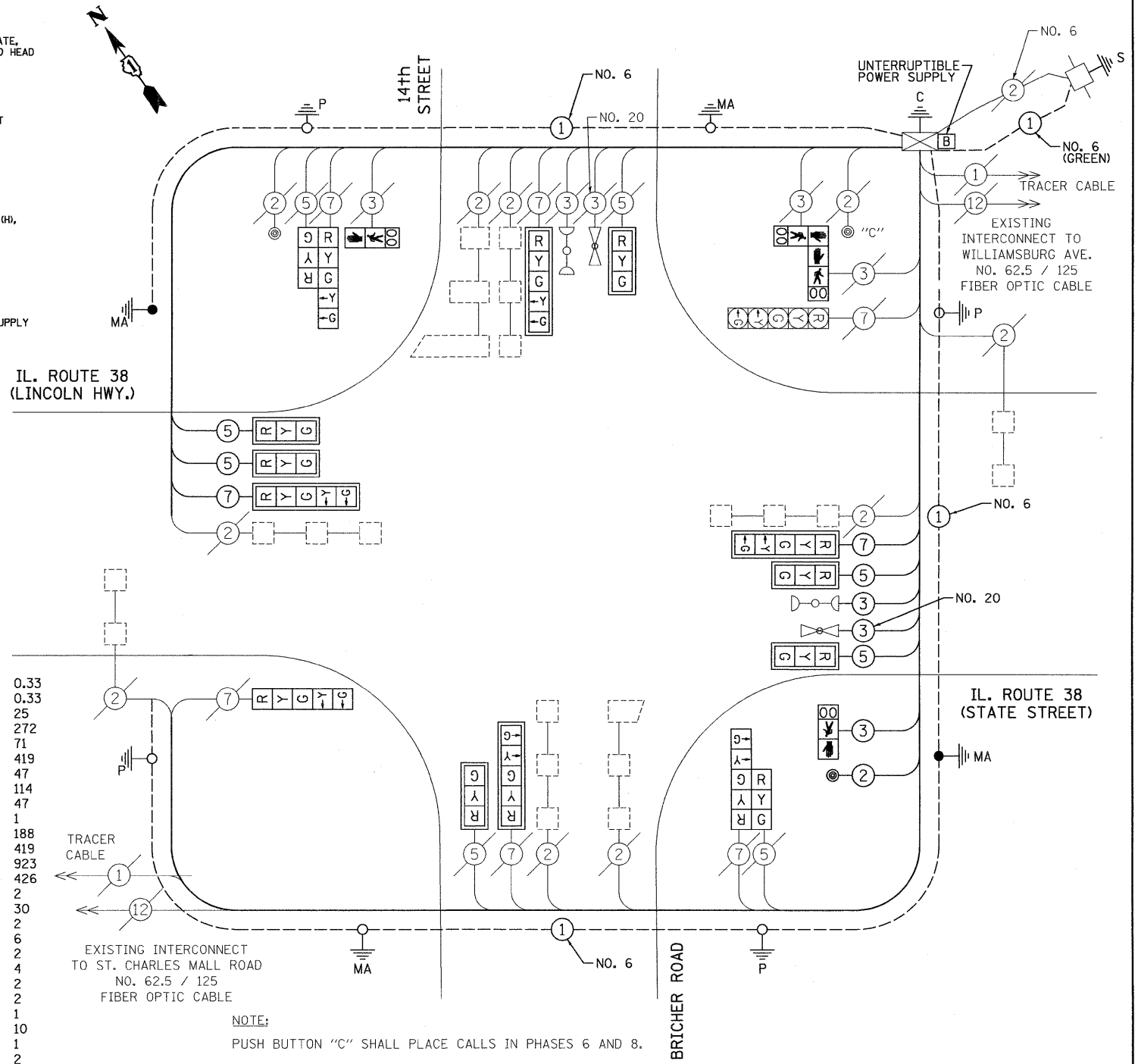
MOBILIZATION
 TRAFFIC CONTROL AND PROTECTION, STANDARD 701701
 RELOCATE SIGN PANEL, TYPE 2
 THERMOPLASTIC PAVEMENT MARKING, LINE-12"
 THERMOPLASTIC PAVEMENT MARKING, LINE-24"
 THERMOPLASTIC PAVEMENT MARKING REMOVAL
 CONDUIT IN TRENCH, 2 1/2" DIA., GALVANIZED STEEL
 UNIT DUCT, 600V, 2-1C NO.6, 1/C NO.6 GROUND, (XLP-TYPE USE), 1" DIA. POLYETHYLENE
 TRENCH AND BACKFILL FOR ELECTRICAL WORK
 MAINTENANCE OF EXISTING TRAFFIC SIGNAL INSTALLATION
 ELECTRIC CABLE IN CONDUIT, SIGNAL NO. 14 2C
 ELECTRIC CABLE IN CONDUIT, SIGNAL NO. 14 3C
 ELECTRIC CABLE IN CONDUIT, SIGNAL NO. 14 5C
 ELECTRIC CABLE IN CONDUIT, SIGNAL NO. 14 7C
 STEEL COMBINATION MAST ARM ASSEMBLY AND POLE 36 FT.
 CONCRETE FOUNDATION, TYPE E 36-INCH DIAMETER
 DRILL EXISTING HANDHOLE
 SIGNAL HEAD, LED, 1-FACE, 3-SECTION, MAST-ARM MOUNTED
 SIGNAL HEAD, LED, 1-FACE, 5-SECTION, BRACKET MOUNTED
 SIGNAL HEAD, LED, 1-FACE, 5-SECTION, MAST-ARM MOUNTED
 SIGNAL HEAD, LED, 2-FACE, 1-3 SECTION, 1-5 SECTION, BRACKET MOUNTED
 PEDESTRIAN SIGNAL HEAD, L.E.D., 1-FACE, BRACKET MOUNTED WITH COUNTDOWN TIMER
 PEDESTRIAN SIGNAL HEAD, L.E.D., 2-FACE, BRACKET MOUNTED WITH COUNTDOWN TIMER
 TRAFFIC SIGNAL BACKPLATE, LOUVERED, ALUMINUM
 RELOCATE EXISTING PEDESTRIAN PUSH-BUTTON
 RELOCATE EXISTING EMERGENCY VEHICLE PRIORITY SYSTEM, DETECTOR UNIT
 REMOVE ELECTRIC CABLE FROM CONDUIT
 REMOVE EXISTING TRAFFIC SIGNAL EQUIPMENT
 REMOVE EXISTING CONCRETE FOUNDATION
 TEMPORARY INFORMATION SIGNING
 RE-OPTIMIZE TRAFFIC SIGNAL SYSTEM LEVEL II (per Intersection)
 RELOCATE EXISTING LUMINAIRE
 ELECTRIC CABLE IN CONDUIT, GROUNDING, NO. 6 1C
 ELECTRIC CABLE IN CONDUIT, NO. 20 3/C, TWISTED & SHIELDED
 UNINTERRUPTIBLE POWER SUPPLY

L SUM	0.33
L SUM	0.33
SQ FT	25
FOOT	272
FOOT	71
SQ FT	419
FOOT	47
FOOT	114
FOOT	47
EACH	1
FOOT	188
FOOT	419
FOOT	923
FOOT	426
EACH	2
FOOT	30
EACH	2
EACH	6
EACH	2
EACH	4
EACH	2
EACH	2
EACH	1
EACH	10
EACH	1
EACH	2
FOOT	1700
EACH	1
EACH	2
SQ FT	34.3
EACH	1
EACH	2
FOOT	688
FOOT	231
EACH	1

EXISTING INTERCONNECT TO ST. CHARLES MALL ROAD NO. 62.5 / 125 FIBER OPTIC CABLE

NOTE: PUSH BUTTON "C" SHALL PLACE CALLS IN PHASES 6 AND 8.

CABLE PLAN



I.D.O.T. TRAFFIC SIGNAL INSTALLATION ELECTRICAL SERVICE REQUIREMENTS						TOTAL WATTAGE
TYPE	NO. LAMPS	WATTAGE		OPERATION		
		INCAND.	LED			
SIGNAL (RED)	16	135	17	0.50		136
(YELLOW)	16	135	25	0.25		100
(GREEN)	16	135	15	0.25		60
ARROW	16	135	12	0.10		19.2
PED. SIGNAL	4	90	25	1.00		100
CONTROLLER	1	100	100	1.00		100
ILLUM. SIGN		84		0.05		

FLASHER 0.50
 ENERGY COSTS TO: TOTAL = 515.2

50% TO CITY OF GENEVA
 50% TO CITY OF ST. CHARLES
 ENERGY SUPPLY CONTACT: MARTY RUBIN
 PHONE: (847) 608-2400
 COMPANY: COMED

FOUNDATION (DEPTH)	FT. (m)	CABLE SLACK	FT. (m)	VERTICAL	FT. (m)
TYPE A - POST	4 (1.2)	HANDHOLE	6.5 (2.0)	ALL FOUNDATIONS	3.0 (1.0)
D - CONTROLLER	4 (1.2)	DOUBLE HANDHOLE	13 (4.0)	MAST ARM (L) POLE	20.0 (6.0)
E - M. ARM POLE		SIGNAL POST	0 (0.0)	BRACKET MOUNTED	13 (4.0)
24" (600mm)	10 (3.0)	CONTROLLER CAB.	0 (0.0)	PED. PUSH-BUTTON	6 (2.0)
30" (750mm)	15 (4.6)	FIBER OPTIC	13 (4.0)	ELECTRIC SERVICE	13.5 (4.1)
		ELECTRIC SERVICE	1 (0.5)	SERVICE TO GROUND	13.5 (4.1)
		GROUND CABLE	1 (0.5)	POST MOUNTED	13 (4.0)

NOTE: THE TRAFFIC SIGNAL CONTROL EQUIPMENT FOR THIS PROJECT SHALL BE "EAGLE".

FILE NAME =	USER NAME = JGC	DESIGNED - KK	REVISED -
\\MICROST\35207\ IL 38 @ 14TH CAB.DGN		DRAWN - JGC	REVISED -
	PLOT SCALE = 1"=20'	CHECKED - BPT	REVISED -
	PLOT DATE = 01-23-09	DATE - 01-23-09	REVISED -

STATE OF ILLINOIS
 DEPARTMENT OF TRANSPORTATION

SCHEDULE OF QUANTITIES, CABLE PLAN AND PHASE DESIGNATION DIAGRAM
 IL. ROUTE 38 AND 14th STREET / BRICHER ROAD

PREPARED BY:
CEMCON, Ltd.
 Consulting Engineers, Land Surveyors & Planners
 2280 White Oak Circle, Suite 100
 Aurora, Illinois 60504-9675
 Ph: 630.862.2100 Fax: 630.862.2199
 E-Mail: cadd@cemcon.com Website: www.cemcon.com

F.A.P. RTE.	SECTION	COUNTY	TOTAL SHEETS	SHEET NO.
347	2009-003 TS	KANE	28	13
				CONTRACT NO. 60F98
FED. ROAD DIST. NO.		ILLINOIS FED. AID PROJECT		

SCALE: N.T.S. SHEET NO. OF SHEETS STA. TO STA.