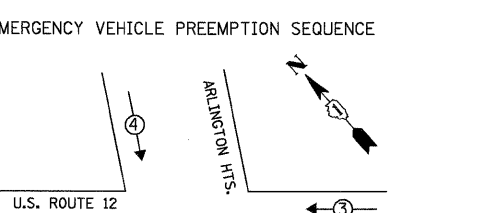
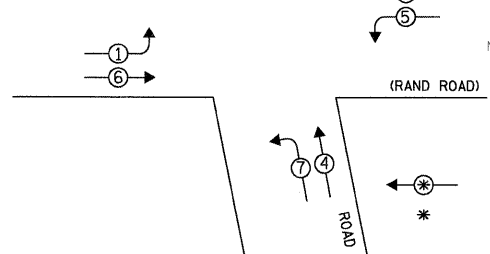
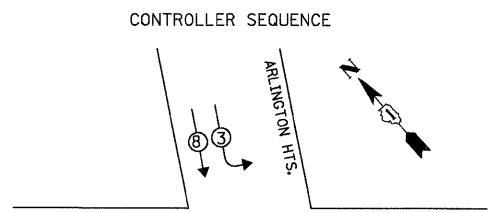


PROFILE SURVEYED - [ ]  
 NOTED - [ ]  
 DATE: [ ] BY: [ ]  
 PLAN SURVEYED - [ ]  
 NOTE BOOK NO. [ ]  
 DATE: [ ] BY: [ ]  
 I.D.O.T. TRAFFIC SIGNAL INSTALLATION ELECTRICAL SERVICE REQUIREMENTS  
 FILE NAME: ...CAB.US12 @ Arlington.dgn  
 USER NAME: FPAICONE  
 DESIGNED: ABR  
 DRAWN: FPB / FCP  
 CHECKED: MJT  
 DATE: 1/22/2009  
 REVISIONS:  
 1. REVISED - [ ]  
 2. REVISED - [ ]  
 3. REVISED - [ ]  
 4. REVISED - [ ]

CHRISTOPHER B. BURKE ENGINEERING LTD.  
 3575 West Higgins Road, Suite 600  
 Rosemont, Illinois 60018  
 (847) 823-0500  
 PROJECT NO. [ ]  
 DATE: [ ]  
 BY: [ ]  
 CHECKED: [ ]  
 DATE: [ ]  
 I.D.O.T. TRAFFIC SIGNAL INSTALLATION ELECTRICAL SERVICE REQUIREMENTS  
 FILE NAME: ...CAB.US12 @ Arlington.dgn  
 USER NAME: FPAICONE  
 DESIGNED: ABR  
 DRAWN: FPB / FCP  
 CHECKED: MJT  
 DATE: 1/22/2009  
 REVISIONS:  
 1. REVISED - [ ]  
 2. REVISED - [ ]  
 3. REVISED - [ ]  
 4. REVISED - [ ]



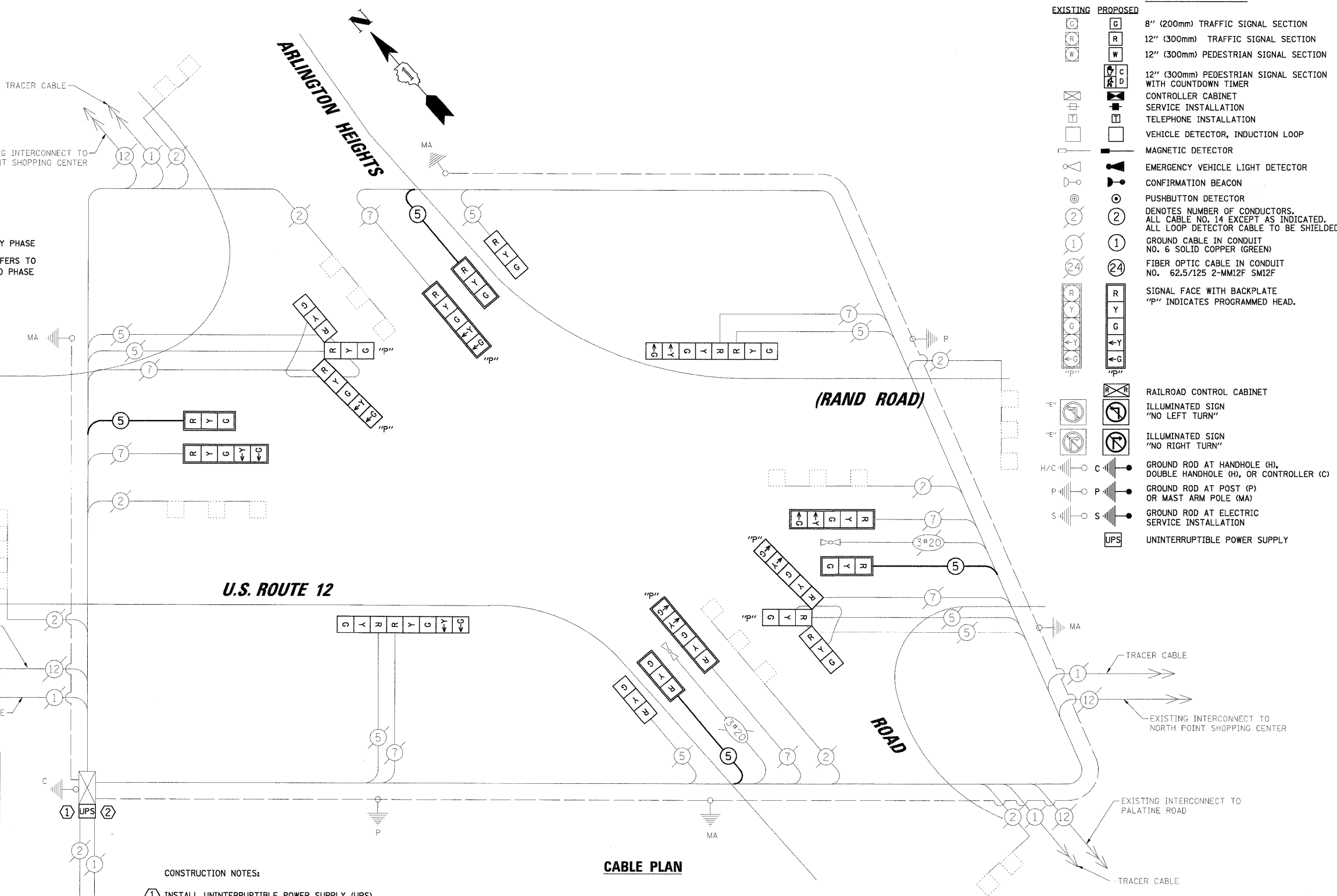
PROPOSED EMERGENCY VEHICLE PREEMPTORS			
EMERGENCY VEHICLE PREEMPTOR	3	4	
MOVEMENT	← →	↓ ↑	

I.D.O.T. TRAFFIC SIGNAL INSTALLATION ELECTRICAL SERVICE REQUIREMENTS				
TYPE	NO. OF LAMPS	WATTAGE X INCAND.	LED	% OPERATION
SIGNAL (RED)	20		17	0.50
(YELLOW)	20		25	0.25
(GREEN)	20		15	0.25
ARROW	16		12	0.10
PED. SIGNAL	-		25	1.00
CONTROLLER	1		100	1.00
ILLUM. SIGN	-	252	25	0.05
VIDEO SYSTEM	-	150	-	1.00
FLASHER	-	-	-	0.50
TOTAL =				489.20

ENERGY COSTS TO: TOTAL = 489.20  
**ILLINOIS DEPARTMENT OF TRANSPORTATION**  
 DIVISION OF HIGHWAY/DISTRICT 1  
 201 WEST CENTER COURT/SCHAUMBURG, ILLINOIS 60196-1096  
 ENERGY SUPPLY: CONTACT: MIKKI MULERO - WILLIAMS  
 PHONE: (630) 691-4721  
 COMPANY: COMED

FOUNDATION (DEPTH)	FT. (m)	CABLE SLACK	FT. (m)	VERTICAL	FT. (m)
TYPE A - POST	4 (1.2)	HANDHOLE	6.5 (2.0)	ALL FOUNDATIONS	3.5 (1.0)
C - CONTROLLER W/ UPS	4 (1.2)	DOUBLE HANDHOLE	13 (4.0)	MAST ARM (L) POLE	20'+L-2'=(6m+L-0.6m)=
D - CONTROLLER	4 (1.2)	SIGNAL POST	2 (1.0)	BRACKET MOUNTED	13 (4.0)
E - M. ARM POLE		CONTROLLER CAB.	1 (0.5)	PED. PUSHBUTTON	6 (1.8)
30" (750mm)	15 (4.6)	FIBER OPTIC	13 (4.0)	ELECTRIC SERVICE	13.5 (4.1)
36" (900mm)	15 (4.6)	ELECTRIC SERVICE	1 (0.5)	SERVICE TO GROUND	13.5 (4.1)
42" (1050mm)	25 (7.6)	GROUND CABLE	1 (0.5)	POST MOUNTED	6 (1.8)

- CONSTRUCTION NOTES:
- INSTALL UNINTERRUPTIBLE POWER SUPPLY (UPS).
  - ALL CABINET MODIFICATIONS AND/OR LOAD SWITCH REPLACEMENTS REQUIRED FOR PROPER OPERATION OF THE LED SIGNAL INDICATIONS TO THE SATISFACTION OF THE ENGINEER SHALL BE INCIDENTAL TO THE PAY ITEM: UNINTERRUPTIBLE POWER SUPPLY.



**CABLE PLAN LEGEND**

EXISTING	PROPOSED	DESCRIPTION
[Symbol]	[Symbol]	8" (200mm) TRAFFIC SIGNAL SECTION
[Symbol]	[Symbol]	12" (300mm) TRAFFIC SIGNAL SECTION
[Symbol]	[Symbol]	12" (300mm) PEDESTRIAN SIGNAL SECTION
[Symbol]	[Symbol]	12" (300mm) PEDESTRIAN SIGNAL SECTION WITH COUNTDOWN TIMER
[Symbol]	[Symbol]	CONTROLLER CABINET
[Symbol]	[Symbol]	SERVICE INSTALLATION
[Symbol]	[Symbol]	TELEPHONE INSTALLATION
[Symbol]	[Symbol]	VEHICLE DETECTOR, INDUCTION LOOP
[Symbol]	[Symbol]	MAGNETIC DETECTOR
[Symbol]	[Symbol]	EMERGENCY VEHICLE LIGHT DETECTOR
[Symbol]	[Symbol]	CONFIRMATION BEACON
[Symbol]	[Symbol]	PUSHBUTTON DETECTOR
[Symbol]	[Symbol]	DENOTES NUMBER OF CONDUCTORS. ALL CABLE NO. 14 EXCEPT AS INDICATED. ALL LOOP DETECTOR CABLE TO BE SHIELDED.
[Symbol]	[Symbol]	GROUND CABLE IN CONDUIT NO. 6 SOLID COPPER (GREEN)
[Symbol]	[Symbol]	FIBER OPTIC CABLE IN CONDUIT NO. 62.5/125 2-MM12F SM12F
[Symbol]	[Symbol]	SIGNAL FACE WITH BACKPLATE
[Symbol]	[Symbol]	"P" INDICATES PROGRAMMED HEAD.
[Symbol]	[Symbol]	RAILROAD CONTROL CABINET
[Symbol]	[Symbol]	ILLUMINATED SIGN "NO LEFT TURN"
[Symbol]	[Symbol]	ILLUMINATED SIGN "NO RIGHT TURN"
[Symbol]	[Symbol]	GROUND ROD AT HANDHOLE (H), DOUBLE HANDHOLE (H), OR CONTROLLER (C)
[Symbol]	[Symbol]	GROUND ROD AT POST (P) OR MAST ARM POLE (MA)
[Symbol]	[Symbol]	GROUND ROD AT ELECTRIC SERVICE INSTALLATION
[Symbol]	[Symbol]	UNINTERRUPTIBLE POWER SUPPLY

**CABLE PLAN**

**SCHEDULE OF QUANTITIES**

ITEM	UNIT	TOTAL
MAINTENANCE OF EXISTING TRAFFIC SIGNAL INSTALLATION	EACH	1
ELECTRIC CABLE IN CONDUIT, SIGNAL NO. 14 5C	FOOT	813
SIGNAL HEAD, LED, 1-FACE, 3-SECTION, MAST-ARM MOUNTED	EACH	4
SIGNAL HEAD, LED, 1-FACE, 3-SECTION, BRACKET MOUNTED	EACH	2
SIGNAL HEAD, LED, 1-FACE, 5-SECTION, MAST-ARM MOUNTED	EACH	2
SIGNAL HEAD, LED, 2-FACE, 1-3 SECTION, 1-5 SECTION, BRACKET MOUNTED	EACH	2
TRAFFIC SIGNAL BACKPLATE, LOUVERED, ALUMINUM	EACH	8
REMOVE EXISTING TRAFFIC SIGNAL EQUIPMENT	EACH	1
UNINTERRUPTIBLE POWER SUPPLY	EACH	1
OPTICALLY PROGRAMMED SIGNAL HEAD, LED, 1-FACE, 5-SECTION, MAST ARM MOUNTED	EACH	2
COMBINATION SIGNAL HEAD, LED, 3-FACE, 1-3 SECTION, 1-3 SECTION OPTICALLY PROGRAMMED, 1-5 SECTION OPTICALLY PROGRAMMED, BRACKET MOUNTED	EACH	2

**STATE OF ILLINOIS**  
**DEPARTMENT OF TRANSPORTATION**

**SCHEDULE OF QUANTITIES, CABLE PLAN, PHASE DESIGNATION DIAGRAM AND EMERGENCY VEHICLE PREEMPTION SEQUENCE**  
**U.S. ROUTE 12 (RAND ROAD) AND ARLINGTON HEIGHTS ROAD**

SCALE:	SHEET NO.	OF SHEETS	STA.	TO STA.	F.A.P. RTE. VAR.	SECTION	COUNTY	TOTAL SHEETS	SHEET NO.
N.T.S.						2009-007-TS	COOK	30	11
								CONTRACT NO. 60G03	
								FED. ROAD DIST. NO. ILLINOIS FED. AID PROJECT	