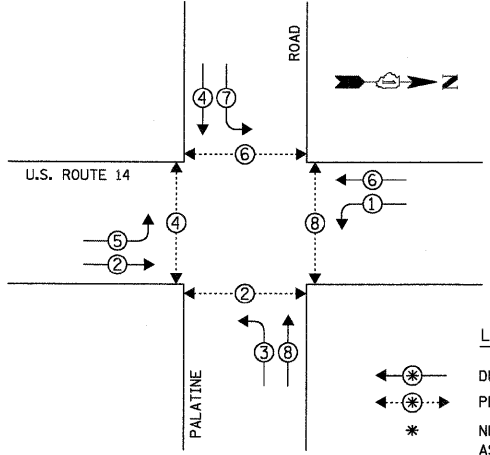


PROFILE SURVEYED - [ ]  
 DATE [ ] BY [ ]  
 NOTE BOOK [ ]  
 I.D.O.T. FILE NO. [ ]  
 I.D.O.T. PROJECT NO. [ ]  
 I.D.O.T. SHEET NO. [ ]  
 I.D.O.T. CONTRACT NO. [ ]  
 I.D.O.T. DISTRICT NO. [ ]  
 I.D.O.T. COUNTY NO. [ ]  
 I.D.O.T. SECTION NO. [ ]  
 I.D.O.T. SHEET NO. [ ]  
 I.D.O.T. CONTRACT NO. [ ]  
 I.D.O.T. DISTRICT NO. [ ]  
 I.D.O.T. COUNTY NO. [ ]  
 I.D.O.T. SECTION NO. [ ]  
 I.D.O.T. SHEET NO. [ ]  
 I.D.O.T. CONTRACT NO. [ ]

CHRISTOPHER B. BURKE ENGINEERING LTD.  
 3575 West Higgins Road, Suite 600  
 Rosemont, Illinois 60018  
 (847) 823-0500  
 CB  
 PROJECT NO. [ ]  
 SHEET NO. [ ]  
 DATE [ ]

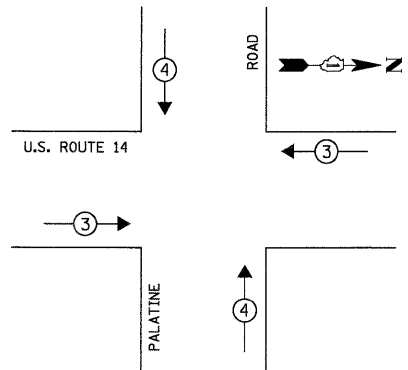
TEMPORARY CONTROLLER SEQUENCE



**LEGEND**  
 ← ⊗ → DUAL ENTRY PHASE  
 ← ⊗ ⊗ → PEDESTRIAN PHASE  
 \* NUMBER REFERS TO ASSOCIATED PHASE

TEMPORARY PHASE DESIGNATION DIAGRAM

TEMPORARY EMERGENCY VEHICLE PREEMPTION SEQUENCE

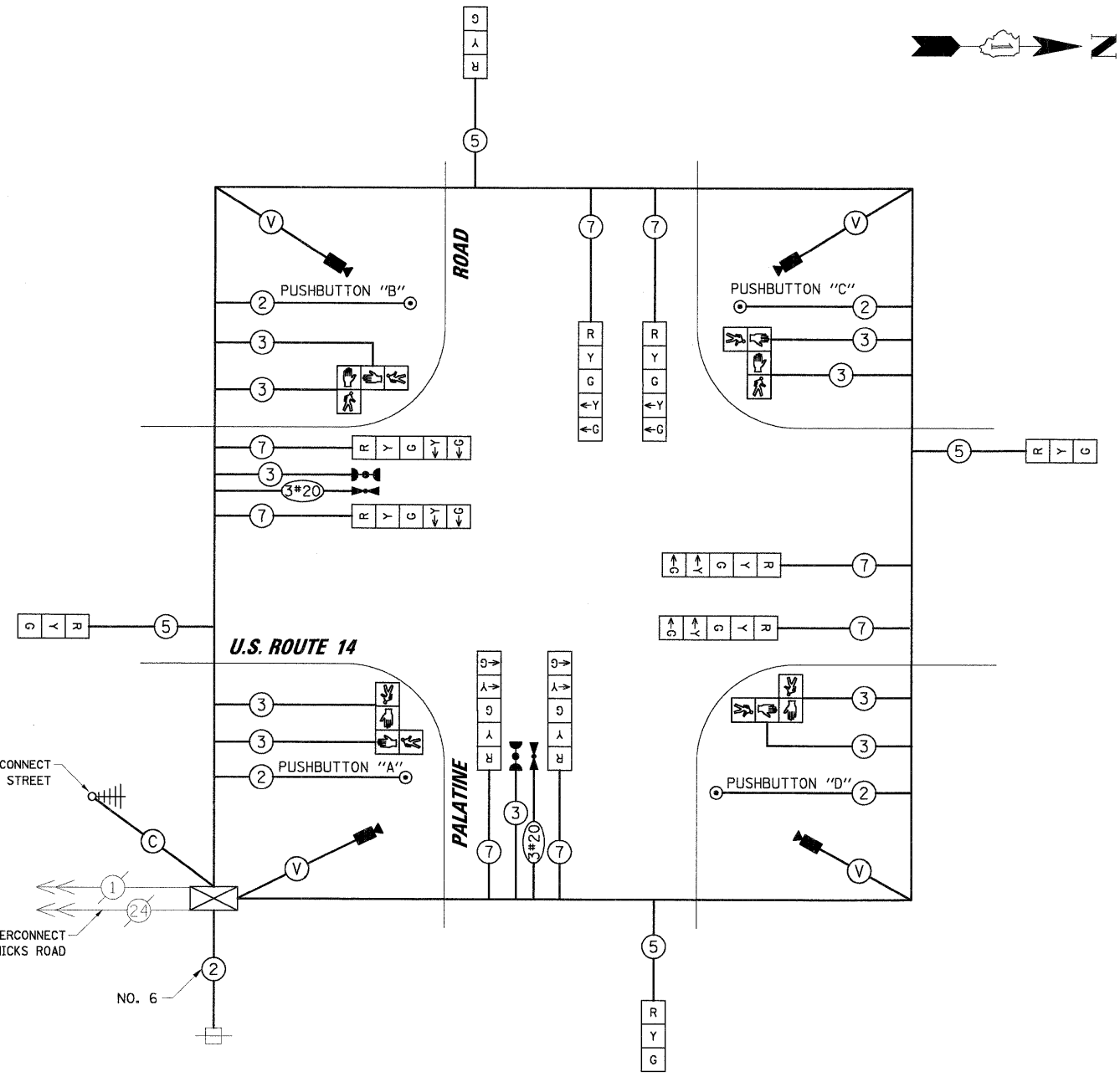


TEMPORARY EMERGENCY VEHICLE PREEMPTORS			
EMERGENCY VEHICLE PREEMPTOR	3	4	
MOVEMENT	← →	↓ ↑	

TEMPORARY CABLE DIAGRAM LEGEND

- R TEMPORARY TRAFFIC SIGNAL SECTION OR PEDESTRIAN SIGNAL SECTION 12" (300mm)
- ⊗ TEMPORARY CONTROLLER CABINET
- ⊞ TEMPORARY SERVICE INSTALLATION
- 5 INDICATES NUMBER OF CONDUCTORS IN CABLE. ALL CONDUCTORS TO BE NUMBER 14 AWG WIRE UNLESS OTHERWISE NOTED.
- ▶ EMERGENCY VEHICLE LIGHT DETECTOR
- ◀ CONFIRMATION BEACON
- VEHICLE DETECTOR, INDUCTION LOOP
- ⊙ PEDESTRIAN PUSHBUTTON DETECTOR
- ⊞ 12" (300mm) PEDESTRIAN SIGNAL SECTION
- ▶ VIDEO DETECTION CAMERA
- V VENDOR CABLE
- ⊞ TEMPORARY RADIO INTERCONNECT
- C COAXIAL CABLE

- CONSTRUCTION NOTES:
- ① RELOCATE EXISTING LIGHT DETECTORS AND CONFIRMATION BEACON TO THE NEW MAST ARMS.
  - ② RELOCATE EXISTING LIGHT DETECTOR AMPLIFIER TO NEW CONTROLLER CABINET.
  - ③ EXISTING FIBER OPTIC CABLE, CONDUIT AND HANDHOLE TO BE UTILIZED FOR TEMPORARY INTERCONNECT TO HICKS ROAD. ABANDON CONDUIT UPON COMPLETION OF PERMANENT INTERCONNECT.



TEMPORARY CABLE PLAN

NOTE:  
 THE TRAFFIC SIGNAL CONTROLLER EQUIPMENT FOR THIS PROJECT SHALL BE "ECONOLITE" TO MATCH THE EXISTING ADJACENT SYSTEM.

NOTE:  
 PUSHBUTTON "A" SHALL PLACE A CALL IN PHASES 2 AND 4.  
 PUSHBUTTON "B" SHALL PLACE A CALL IN PHASES 4 AND 6.  
 PUSHBUTTON "C" SHALL PLACE A CALL IN PHASES 6 AND 8.  
 PUSHBUTTON "D" SHALL PLACE A CALL IN PHASES 2 AND 8.

RESTORATION OF WORK AREA. RESTORATION OF THE TRAFFIC SIGNAL WORK AREA SHALL BE INCIDENTAL TO THE RELATED PAY ITEM SUCH AS FOUNDATION, CONDUIT, HANDHOLE, TRENCH AND BACKFILL, ETC., AND NO EXTRA COMPENSATION SHALL BE ALLOWED. ALL ROADWAY SURFACES SUCH AS SHOULDERS, MEDIANS, SIDEWALKS, PAVEMENT, ETC. SHALL BE REPLACED IN KIND. ALL DAMAGE TO MOWED LAWNS SHALL BE REPLACED WITH AN APPROVED SOD, AND ALL DAMAGE TO UNMOWED FIELDS SHALL BE SEEDED IN ACCORDANCE WITH STANDARD SPECIFICATIONS 252 AND 250 RESPECTIVELY.

I.D.O.T. TRAFFIC SIGNAL INSTALLATION ELECTRICAL SERVICE REQUIREMENTS					TOTAL WATTAGE
TYPE	NO. OF LAMPS	WATTAGE X INCAND.	LED X % OPERATION		
SIGNAL (RED)	12	17	0.50	102.00	
(YELLOW)	12	25	0.25	75.00	
(GREEN)	12	15	0.25	45.00	
ARROW	16	12	0.10	19.20	
PED. SIGNAL	8	25	1.00	200.00	
CONTROLLER	1	100	1.00	100.00	
ILLUM. SIGN	-	25	0.05	-	
VIDEO SYSTEM	1	150	1.00	150.00	
FLASHER			0.50		
ENERGY COSTS TO:				TOTAL =	691.20

ILLINOIS DEPARTMENT OF TRANSPORTATION  
 DIVISION OF HIGHWAY/DISTRICT 1  
 201 WEST CENTER COURT/SCHAUMBURG, ILLINOIS 60196-1096  
 ENERGY SUPPLY: CONTACT: MIKKI MULERO - WILLIAMS  
 PHONE: (630) 691-4721  
 COMPANY: COMED

FOUNDATION (DEPTH)	FT. (m)	CABLE SLACK	FT. (m)	VERTICAL	FT. (m)
TYPE A - POST	4 (1.2)	HANDHOLE	6.5 (2.0)	ALL FOUNDATIONS	3.5 (1.0)
C - CONTROLLER W/ UPS	4 (1.2)	DOUBLE HANDHOLE	13 (4.0)	MAST ARM (L) POLE	20'+L-2'
D - CONTROLLER	4 (1.2)	SIGNAL POST	2 (1.0)		(6m+L-0.6m)=
E - M. ARM POLE		CONTROLLER CAB.	1 (0.5)	BRACKET MOUNTED	13 (4.0)
30" (750mm)	15 (4.6)	FIBER OPTIC	13 (4.0)	PED. PUSHBUTTON	6 (1.8)
36" (900mm)	15 (4.6)	ELECTRIC SERVICE	1 (0.5)	ELECTRIC SERVICE	13.5 (4.1)
42" (1050mm)	25 (7.6)	GROUND CABLE	1 (0.5)	SERVICE TO GROUND	13.5 (4.1)
				POST MOUNTED	6 (1.8)