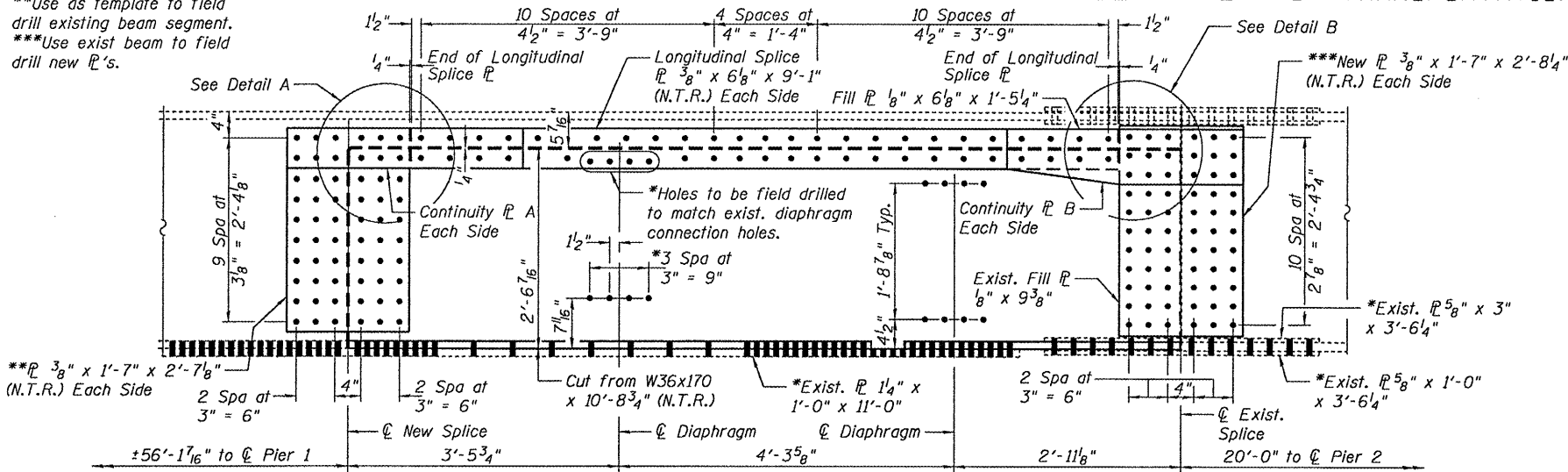
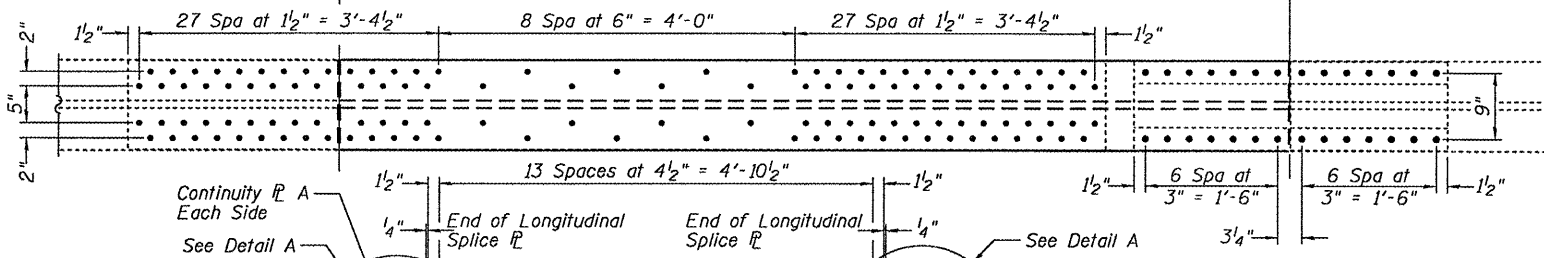


\*Use exist.  $\bar{L}$ 's and clip  $\bar{L}$ 's as template to field drill new beam segment.  
 \*\*Use as template to field drill existing beam segment.  
 \*\*\*Use exist beam to field drill new  $\bar{L}$ 's.

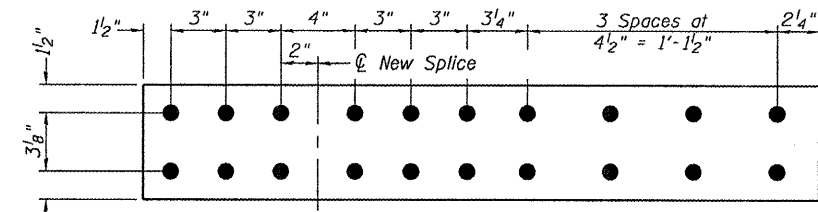
STATE OF ILLINOIS  
 DEPARTMENT OF TRANSPORTATION



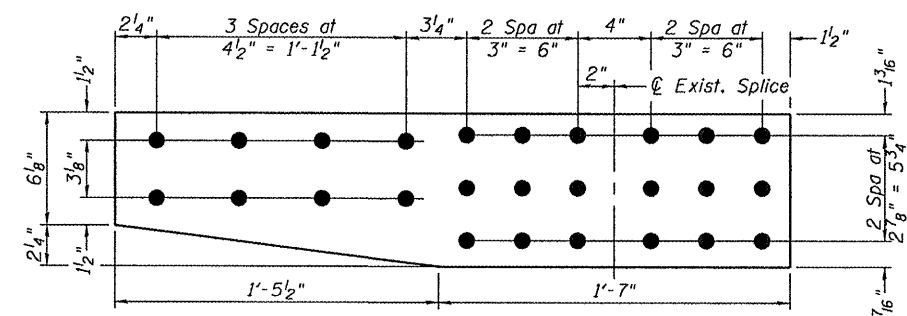
**REPAIR DETAIL A  
 ELEVATION BEAM 7**



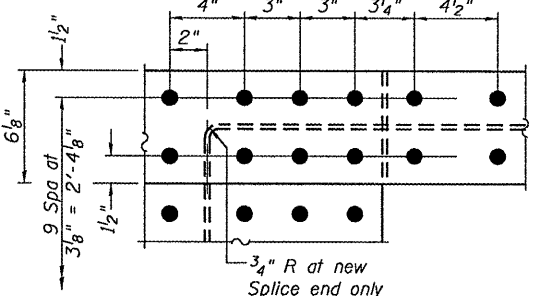
**REPAIR DETAIL B  
 ELEVATION BEAMS 8 & 9**



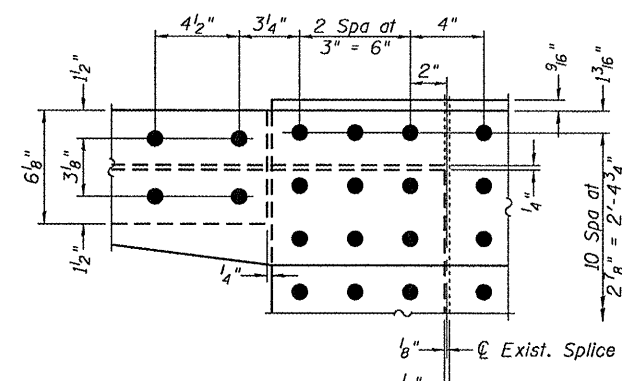
**CONTINUITY BAR A**  
 $\bar{L}$   $\frac{1}{2}$ " X  $\frac{6}{8}$ " X 3'-0  $\frac{1}{2}$ "  
 (10 Req'd)



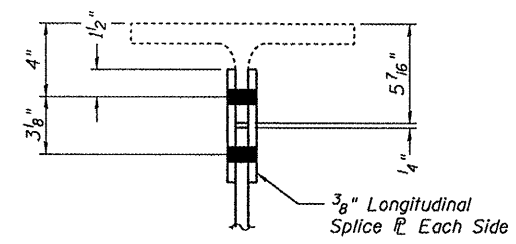
**CONTINUITY BAR B**  
 $\bar{L}$   $\frac{1}{2}$ " X  $\frac{8}{8}$ " X 3'-0  $\frac{1}{2}$ "  
 (2 Req'd)



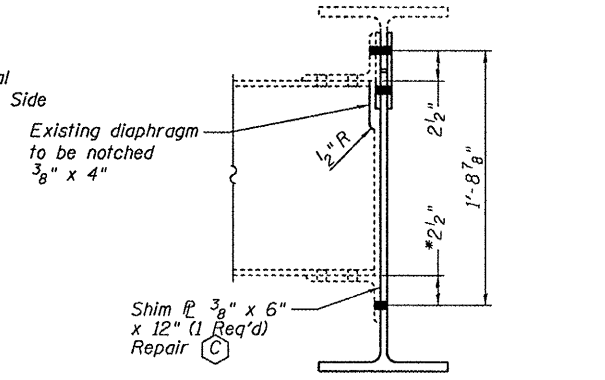
**ENLARGED DETAIL A**



**ENLARGED DETAIL B**

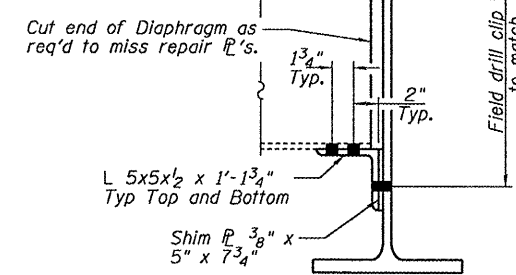


**TYPICAL SPLICE SECTION**



**TYPICAL SECTION AT DIAPHRAGM**

Existing clip  $\bar{L}$ 's to be removed using the air-arc method, being careful not to damage diaphragm to remain.



**DIAPHRAGM SECTION  
 AT BEAM 8**

DESIGNED	V.H.V.
CHECKED	A.T.H.
DRAWN	Drew Christopher
CHECKED	V.H.V. A.T.H.

EXAMINED	March 9, 2009
PASSED	Carl Perry ENGINEER OF STRUCTURAL SERVICES
	Ralph E. Anderson ENGINEER OF BRIDGES AND STRUCTURES

SHEET NO. 3 3 SHEETS	F.A. RTE.	SECTION	COUNTY	TOTAL SHEETS	SHEET NO.
	55	0101-601 HB-I	Cook	13	7
	SN 016-0001		CONTRACT NO. 60G06		
FED. ROAD DIST. NO.		ILLINOIS FED. AID PROJECT			