

ROUTE	SECTION	COUNTY	TOTAL SHEETS	SHEET NUMBER
FAI 55	0101-601 HB-I	COOK	13	1

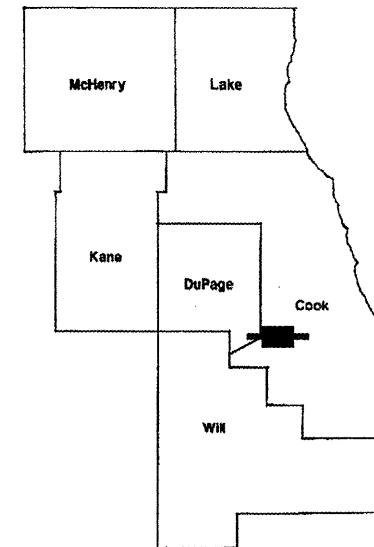
FOR INDEX OF SHEETS SEE SHEET 2

CONTRACT NO. 60G06

**STATE OF ILLINOIS
DEPARTMENT OF TRANSPORTATION
DIVISION OF HIGHWAYS
DISTRICT ONE
PROPOSED HIGHWAY PLANS**

FAI ROUTE 55: SB I-55 (STEVENSON EXPWY)
OVER EB JOLIET RD
SECTION 0101-601 HB-I
BRIDGE REPAIR
COOK COUNTY
C-91-321-09
SN 016-0001

D-91-321-09



LOCATION OF IMPROVEMENT INDICATED THUS:

**IMPROVEMENT IS LOCATED IN
THE VILLAGE OF BURR RIDGE**

**LOCATION OF
IMPROVEMENT
SN 016-0001**

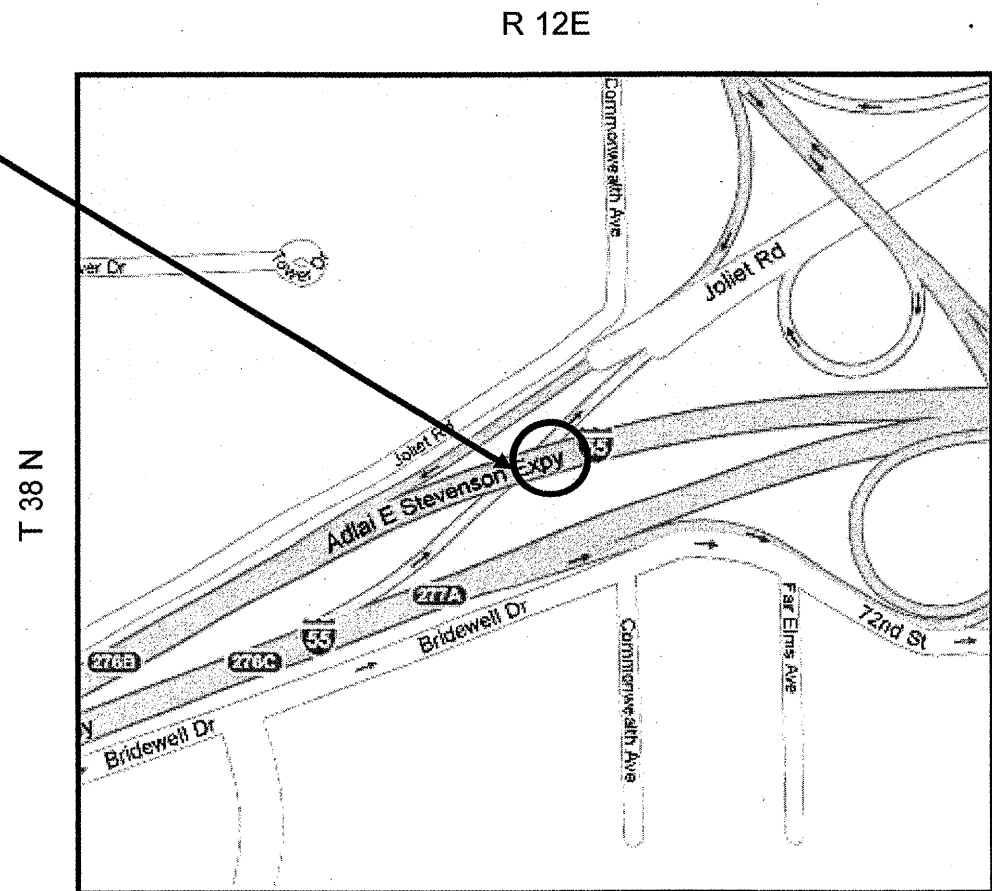
TRAFFIC DATA:

I-55

POSTED SPEED LIMIT = 55 MPH
2006 ADT = 179,800

JOLIET RD

POSTED SPEED LIMIT = 45 MPH
2006 ADT = 10,100



LYONS TOWNSHIP

PROJECT ENGINEER ROBERT BORO (847) 705-4178
PROJECT MANAGER KEN ENG

CONTRACT NO. 60G06

**STATE OF ILLINOIS
DEPARTMENT OF TRANSPORTATION
DIVISION OF HIGHWAYS**

SUBMITTED: FEBRUARY 20, 2009
Diana M. O'Keefe
DEPUTY DIRECTOR OF HIGHWAYS, REGION ENGINEER

March 27, 2009
Charles J. Ingersoll
ENGINEER OF DESIGN AND ENVIRONMENT

March 27, 2009
Christine M. Reed
DIRECTOR, DIVISION OF HIGHWAYS

**PRINTED BY THE AUTHORITY
OF THE STATE OF ILLINOIS**

J.U.L.I.E.: JOINT UTILITY LOCATION
INFORMATION FOR EXCAVATION
(800) 892-0123 OR 811

ROUTE	SECTION	COUNTY	TOTAL SHEETS	SHEET NUMBER
FAI 55	0101-601 HB-I	COOK	13	2

CONTRACT NO: 60G06

INDEX OF SHEETS

- 1 TITLE SHEET
- 2 INDEX OF SHEETS, STATE STANDARDS AND GENERAL NOTES
- 3 SUMMARY OF QUANTITIES
- 4 TRAFFIC STAGING
- 5 - 7 BRIDGE REPAIR PLAN SHEETS
- 8 - 9 TRAFFIC CONTROL PLANS
- 10 TRAFFIC CONTROL DETAILS FOR SINGLE AND MULTI-LANE WEAVE (TC-9)
- 11 - 12 MULTILANE FREEWAY PAVEMENT MARKING (TC-12)
- 13 TRAFFIC CONTROL FOR SHOULDER CLOSURE AND PARTIAL RAMP CLOSURE (TC-17)

STATE STANDARDS

STANDARD NO	DESCRIPTION
701400-03	APPROACH TO LANE CLOSURE, FREEWAY/EXPRESSWAY
701401-05	LANE CLOSURE, FREEWAY/EXPRESSWAY
701411-05	LANE CLOSURE, MULTILANE, AT ENTRANCE OR EXIT RAMPS, FOR SPEEDS > 45 MPH
701426-03	LANE CLOSURE, MULTILANE, INTERMITTENT OR MOVING OPERATION FOR SPEEDS ≥ 45 MPH
701446-01	TWO LANE CLOSURES, FREEWAY/EXPRESSWAYS
701901-01	TRAFFIC CONTROL DEVICES
704001-05	TEMPORARY CONCRETE BARRIER

GENERAL NOTES

BEFORE STARTING ANY EXCAVATION, THE CONTRACTOR SHALL CALL J.U.L.I.E. AT (800)892-0123 OR 811 FOR FIELD LOCATIONS OF BURIED ELECTRIC, TELEPHONE AND GAS UTILITIES (48 HOURS NOTIFICATION IS REQUIRED).

THE CONTRACTOR WILL NOT BE ALLOWED TO SET UP A YARD OR FIELD OFFICE ON STATE PROPERTY WITHOUT WRITTEN PERMISSION FROM THE DEPARTMENT.

IT SHALL BE THE CONTRACTOR'S RESPONSIBILITY TO VERIFY ALL DIMENSIONS AND CONDITIONS EXISTING IN THE FIELD PRIOR TO CONSTRUCTION AND ORDERING OF MATERIALS.

THE CONTRACTOR SHALL CONTACT THE DISTRICT ONE TRAFFIC CONTROL SUPERVISOR AT (847) 705-4151 A MINIMUM OF 72 HOURS IN ADVANCE OF BEGINNING WORK.

THE CONTRACTOR SHALL BE RESPONSIBLE FOR THE NOTIFICATION OF ALL EMERGENCY SERVICES, SCHOOL DISTRICTS, IDOT'S COMMUNICATION CENTER, SPRINGFIELD TRUCK PERMIT SECTION, AND OTHER AGENCIES AFFECTED BY THE CLOSURE. THE CONTRACTOR SHALL ALSO BE RESPONSIBLE FOR POSTING SIGNS THAT WILL INDICATE THE DATES THE CLOSURE WILL BE IN PLACE.

DO NOT SCALE PLANS FOR CONSTRUCTION DIMENSIONS.

WHEN ARTIFICIAL LIGHTING IS USED IN NIGHT OPERATIONS, THE CONTRACTOR SHALL EXERCISE THE UPMOST PRECAUTIONS IN PREVENTING ADVERSE VISIBILITY TO THE MOTORING PUBLIC AND ADJOINING RESIDENTIAL AREAS.

ANY PAVEMENT MARKINGS OBLITERATED BY THE WORK SHALL BE REPLACED AND PAID FOR IN KIND. BEFORE BEGINNING WORK, THE CONTRACTOR SHALL RETAIN AND RECORD (FOR FUTURE REFERENCE), ALL EXISTING PAVEMENT MARKING LINES AND RAISED REFLECTIVE PAVEMENT MARKERS IN ORDER THAT THESE LOCATIONS CAN BE RE-ESTABLISHED FOR STRIPING. EXACT LOCATIONS OF ALL STRIPING SHALL BE AS DIRECTED BY THE ENGINEER.

THESE PLANS HAVE BEEN PREPARED FROM NOTES RECEIVED FROM BRIDGE INSPECTORS.

THE ENGINEER SHALL REPORT CLEARANCES UNDER THE BRIDGE AFTER CONSTRUCTION

ILLINOIS DEPARTMENT OF TRANSPORTATION

INDEX OF SHEETS
STATE STANDARDS
GENERAL NOTES

ROUTE	SECTION	COUNTY	TOTAL SHEETS	SHEET NUMBER
FAI 55	0101-601 HB-I	COOK	13	3

URBAN

CONTRACT NO.: 60G06

MCHD CLAIM # 692276 CONSTRUCTION TYPE CODE: SFTY - 2A 100% MCHD

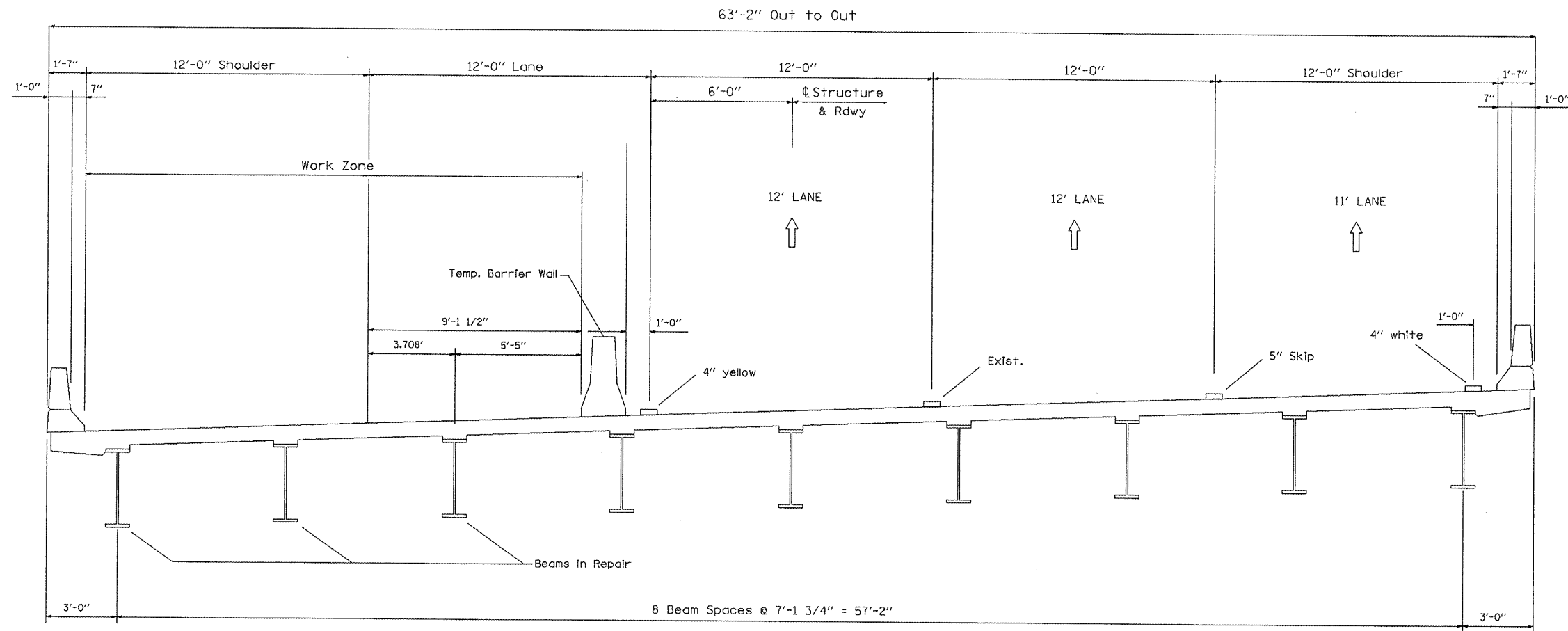
CODE NO.	ITEMS	UNITS	TOTAL QUANTITIES
50501130	STRUCTURAL STEEL REPAIR	POUND	5770
67000400	ENGINEER'S FIELD OFFICE, TYPE A	CAL MO	3
67100100	MOBILIZATION	L SUM	1
70106800	CHANGEABLE MESSAGE SIGN	CAL MO	3
70300540	PAVEMENT MARKING TAPE, TYPE III, 6"	FOOT	250
70301000	WORK ZONE PAVEMENT MARKING REMOVAL	SQ FT	1570
70300240	TEMPORARY PAVEMENT MARKINGS - LINE 6"	FOOT	250
70400100	TEMPORARY CONCRETE BARRIER	FOOT	250
• 78000200	THERMOPLASTIC PAVEMENT MARKING - LINE 4"	FOOT	200
• 78000300	THERMOPLASTIC PAVEMENT MARKING - LINE 5"	FOOT	210
• 78008210	POLYUREA PAVEMENT MARKING TYPE I - LINE 4"	FOOT	1065
• 78008220	POLYUREA PAVEMENT MARKING TYPE I - LINE 5"	FOOT	705
• 78100300	REPLACEMENT REFLECTOR	EACH	92
78300100	PAVEMENT MARKING REMOVAL	SQ FT	803
X0325775	WET REFLECTIVE TEMPORARY TAPE, TYPE III, 4 INCH	FOOT	3205
X0325876	WET REFLECTIVE TEMPORARY TAPE, TYPE III, 8 INCH	FOOT	430
X0326107	WET REFLECTIVE TEMPORARY TAPE, TYPE III, 5 INCH	FOOT	510
X7011015	TRAFFIC CONTROL AND PROTECTION (EXPRESSWAYS)	L SUM	1
Z0030250	IMPACT ATTENUATORS, TEMPORARY (NON-DIRECTIVE), TEST LEVEL 3	EACH	1
Z0073351	TEMPORARY SLAB SUPPORT SYSTEM	L SUM	1
70200530	BARRIER WALL MARKERS, TYPE C	EACH	20
X7013820	TRAFFIC CONTROL SURVEILLANCE, EXPRESSWAYS	CAL DA	30

ILLINOIS DEPARTMENT OF TRANSPORTATION

SUMMARY OF QUANTITIES

Rev.

• SPECIALTY ITEM



DECK CROSS SECTION
Looking West

FILE NAME =	USER NAME = rodriguezj	DESIGNED -	REVISED -
ct:\pwork\1\1001\RODRIGUEZJ\10125189\10125189.dgn	32189-ahtrplan.dgn	DRAWN -	REVISED -
	PLOT SCALE = 34.8000' / IN.	CHECKED -	REVISED -
	PLOT DATE = 4/8/2009	DATE -	REVISED -

STATE OF ILLINOIS
DEPARTMENT OF TRANSPORTATION

SOUTHBOUND I-55 OVER JOLIET RD
TRAFFIC STAGING

F.A.I. RTE.	SECTION	COUNTY	TOTAL SHEETS	SHEET NO.
55	0101-601 HB-1	COOK	13	4
SCALE:			CONTRACT NO. 60G06	
SHEET NO. OF SHEETS STA. TO STA.			[ILLINOIS] FED. AID PROJECT	

STATE OF ILLINOIS
DEPARTMENT OF TRANSPORTATION

GENERAL NOTES

All structural steel shall conform to AASHTO Classification M-270 Gr. 50, unless otherwise noted.

Fasteners shall be high strength bolts. Flange splice holes shall be $\frac{1}{8}$ " ϕ for $\frac{3}{4}$ " ϕ bolts. Web splice holes shall be $\frac{1}{16}$ " ϕ for $\frac{3}{4}$ " ϕ bolts.

The Contractor shall provide support and/or shoring systems for the slab and beam in the area of existing beam removal. See Special Provisions "Temporary Slab Support System."

After the new beam is in its final position and/or beam straightening operations have been completed, the Engineer in the field shall check to see that the top flange is tight against the slab. If not, the Contractor shall inject epoxy between the existing concrete deck and the top flange of the beam. See Special Provision "Epoxy Injection".

The Contractor shall grind all cracked welds parallel to the direction of the existing weld and not perpendicular to the weld.

Plan dimensions and details relative to existing plans are subject to routine variations. The Contractor shall field verify existing dimensions and details affecting new construction and make necessary approved adjustments prior to construction or ordering of materials. Such variations shall not be cause for additional compensation for a change in scope of the work, however, the Contractor will be paid for the quantity actually furnished based upon the unit price bid for the work.

Cost of removal and re-installation of all members necessary to complete the work as detailed on the plans and as specified in the Special Provisions shall be included with Structural Steel Repair.

The Inorganic Zinc Rich Primer / Acrylic / Acrylic Paint System shall be used for shop and field painting of new structural steel except where otherwise noted. The color of the final finish coat shall be Interstate Green, Munsell No. 7.5G 4/B. See Special Provision "Cleaning and Painting New Metal Structures".

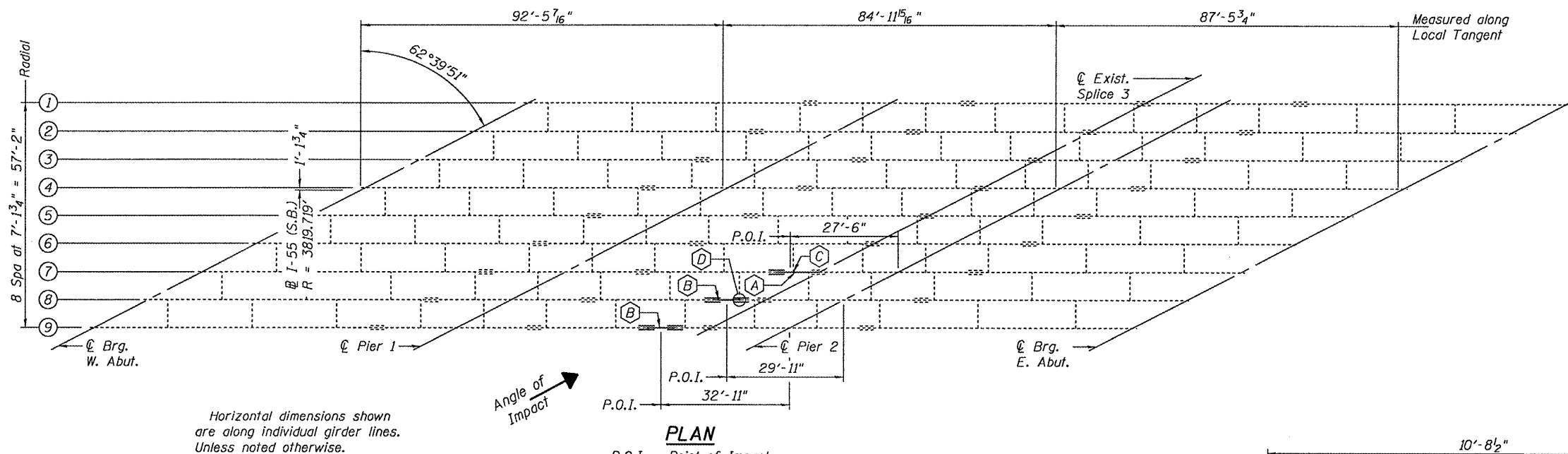
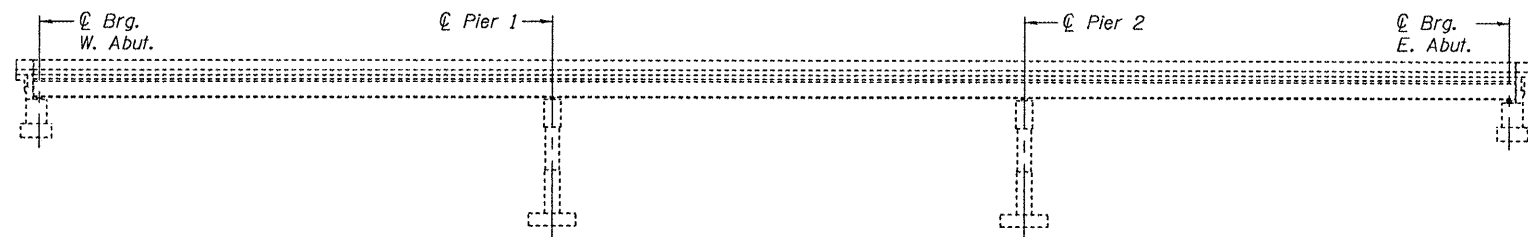
The existing structural steel coating contains lead. The Contractor shall take appropriate precautions to deal with the presence of lead on this project. Existing structural steel that will be in contact with new structural steel shall be cleaned and painted prior to erection as required by the Special Provision "Cleaning and Painting Contact Surface Areas of Existing Steel Structures".

Diaphragm connection holes shall be $\frac{1}{8}$ " ϕ for $\frac{3}{4}$ " ϕ bolts. Two hardened washers shall be required at diaphragm connections.

The Contractor is responsible for the method of supporting the portion of existing girder to be removed prior to, during cutting and removal operations, and shall ensure that cuts made are smooth and straight.

Load carrying components designated "NTR" shall conform to the Supplemental Requirements for Notch Toughness, Zone 2.

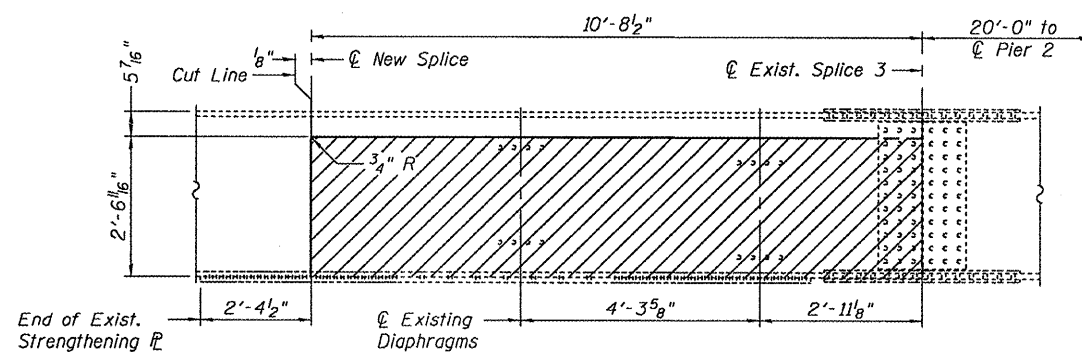
All cut edges to be round smooth and be free of any nicks, gauges or irregularities.



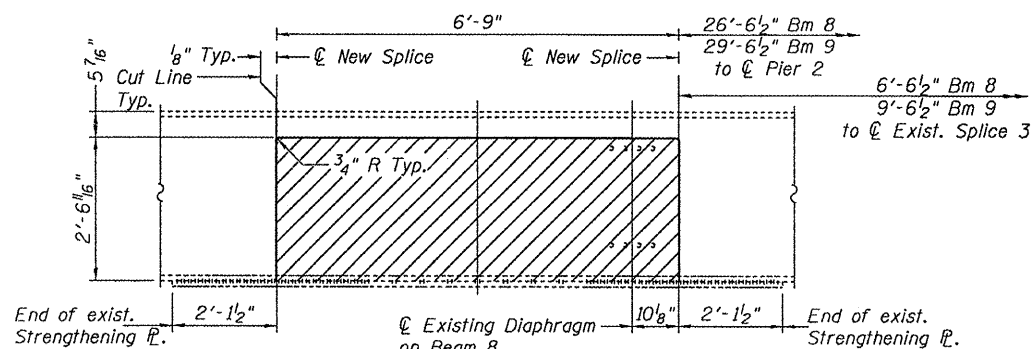
TOTAL BILL OF MATERIAL

ITEM	UNIT	QUANTITY
Structural Steel Repair	Pound	5,770
Temporary Slab Support System	L.S.	1

- (A) Remove and Replace section of beam
- (B) Remove and Replace section of beam
- (C) Add shim \bar{L} at bottom clip L.
- (D) Remove and Replace Top and Bottom clip L's. Shim \bar{L} at bottom clip L.



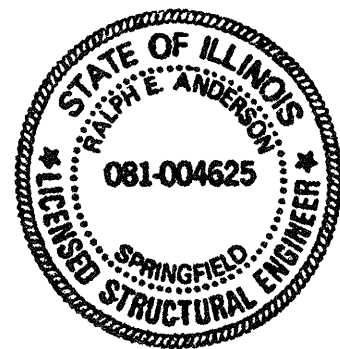
All cut edges are to be ground smooth and be free of any nicks, gauges or irregularities.



PLAN AND ELEVATION

DESIGNED Victor H. Ve C. J.
CHECKED Adrian T. Hallaway
DRAWN [Signature]
CHECKED V H V A T H

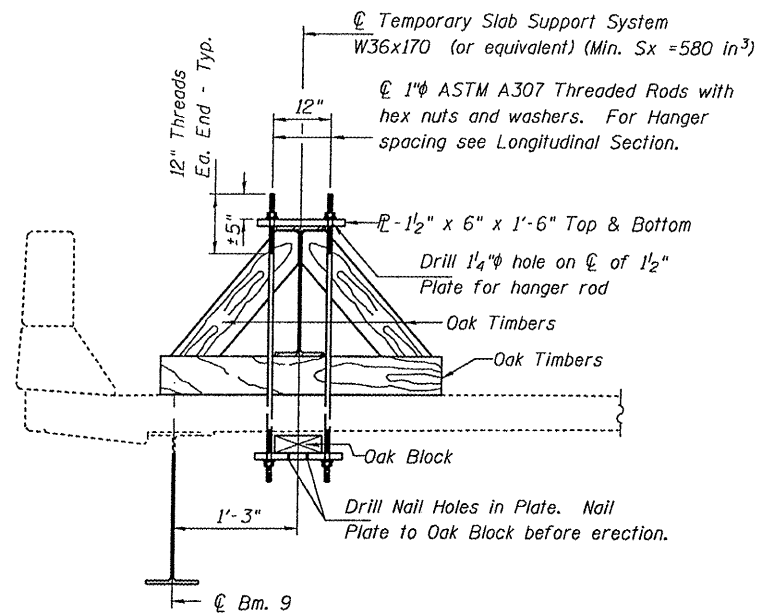
EXAMINED [Signature]
PASSED [Signature]
ENGINEER OF STRUCTURAL SERVICES
ENGINEER OF BRIDGES AND STRUCTURES



Expires: November 30, 2010

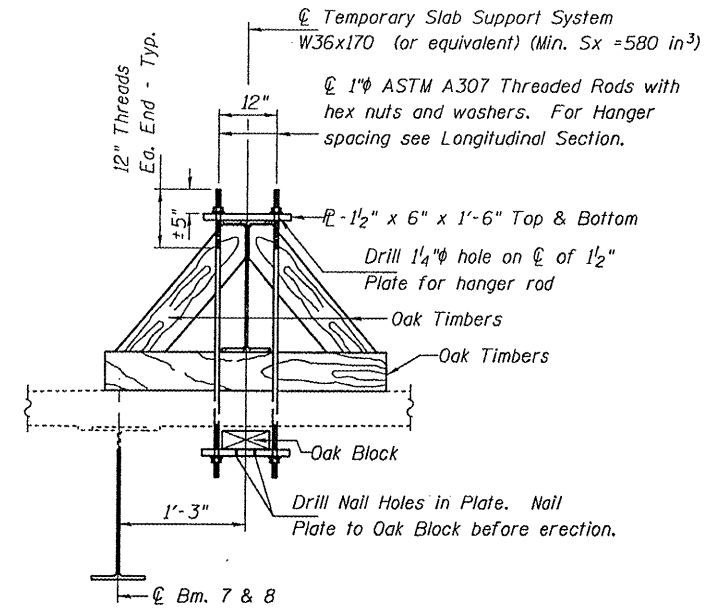
SHEET NO.	F.A. RTE.	SECTION	COUNTY	TOTAL SHEETS	SHEET NO.
1	55	0101-601 HB-I	Cook	13	5
3 SHEETS		SN 016-0001	CONTRACT NO. 60G06		
		FED. ROAD DIST. NO.	ILLINOIS	FED. AID PROJECT	

STATE OF ILLINOIS
DEPARTMENT OF TRANSPORTATION

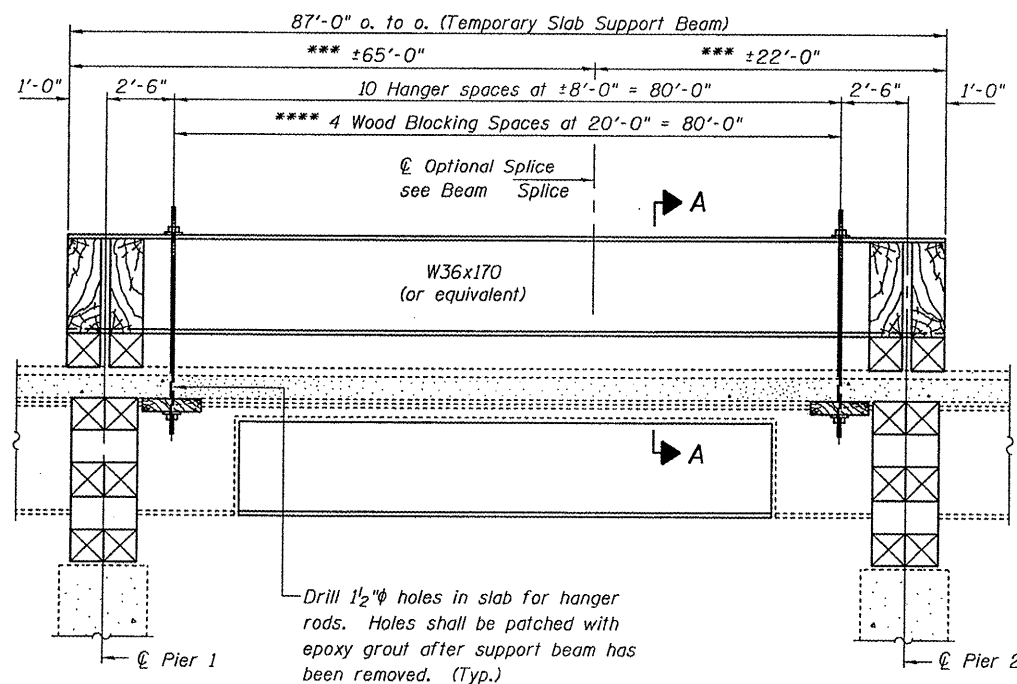


SECTION A-A
BEAM 9

If work on adjacent beam is to be done simultaneously, each beam line will be required to have its own Temporary Slab Support System.



SECTION A-A
BEAMS 7 & 8



LONGITUDINAL SECTION
SUGGESTED TEMPORARY SLAB SUPPORT SYSTEM

***These dimensions may vary for available beams in stock.
****Wood blocking between piers to be placed after support beam deflects under its own weight.

DESIGNED	V.H.V.
CHECKED	A.T.H.
DRAWN	Drew Christopher
CHECKED	V.H.V. A.T.H.

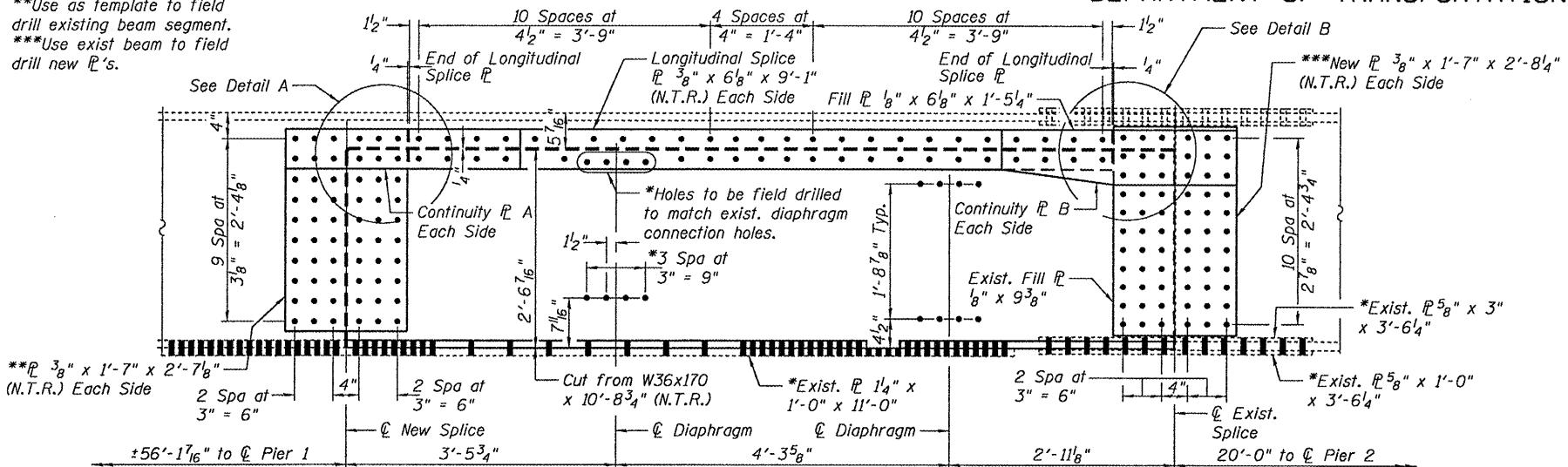
March 9, 2009	
EXAMINED	<i>Carl Knapp</i> ENGINEER OF STRUCTURAL SERVICES
PASSED	<i>Ralph E. Anderson</i> ENGINEER OF BRIDGES AND STRUCTURES

DETAILS

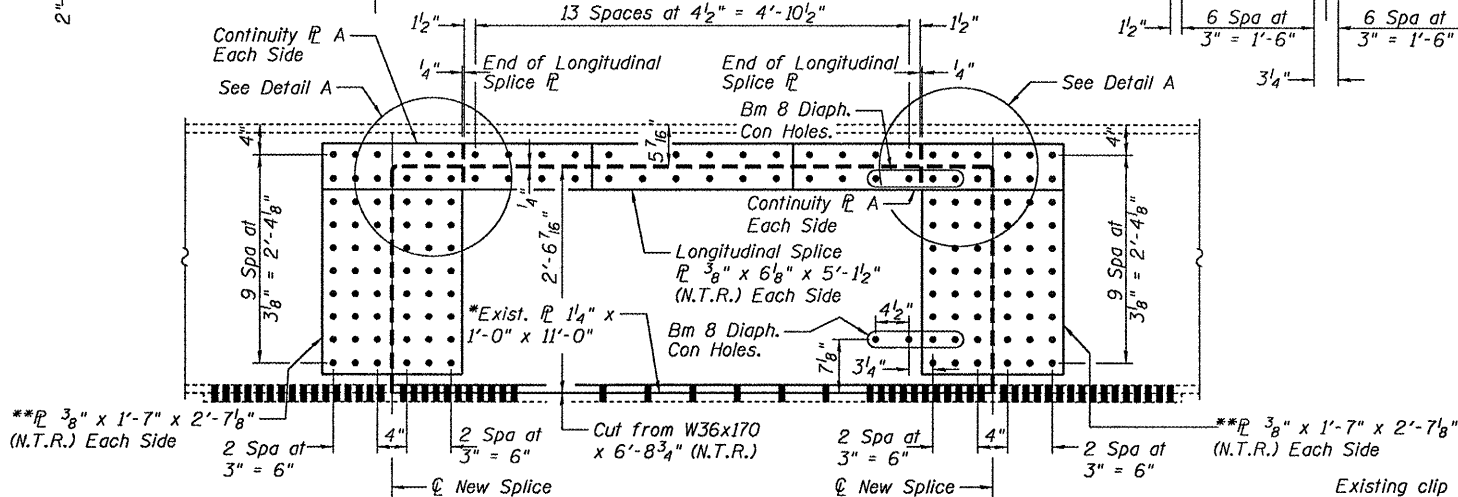
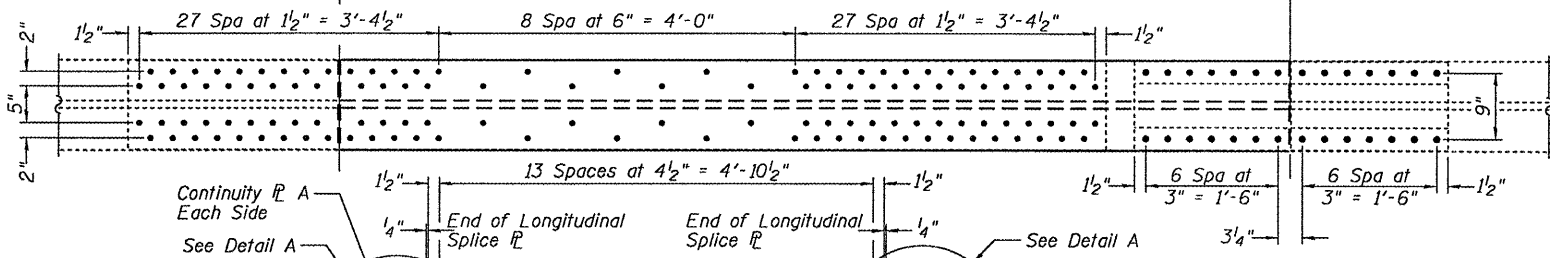
SHEET NO. 2	F.A. RTE.	SECTION	COUNTY	TOTAL SHEETS	SHEET NO.
	55	0101-601 HB-I	Cook	13	6
3 SHEETS	SN 016-0001		CONTRACT NO. 60G06		
	FED. ROAD DIST. NO.	ILLINOIS	FED. AID PROJECT		

STATE OF ILLINOIS
DEPARTMENT OF TRANSPORTATION

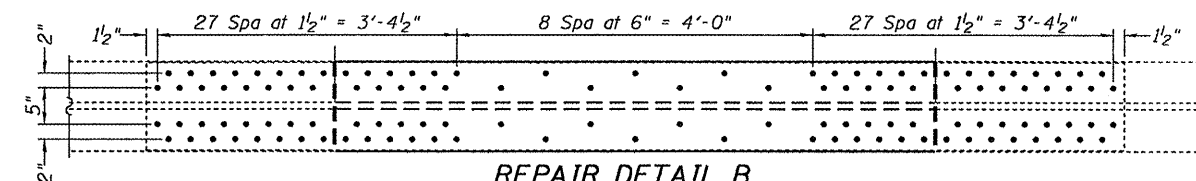
*Use exist. \bar{L} 's and clip \bar{L} 's as template to field drill new beam segment.
**Use as template to field drill existing beam segment.
***Use exist beam to field drill new \bar{L} 's.



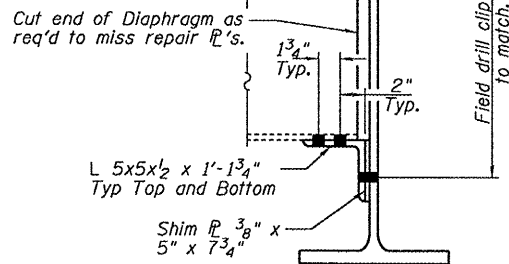
**REPAIR DETAIL A
ELEVATION BEAM 7**



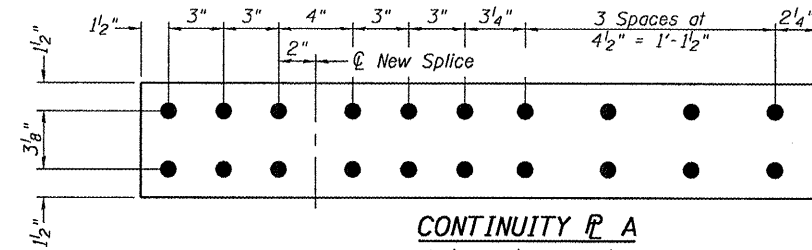
**REPAIR DETAIL B
ELEVATION BEAMS 8 & 9**



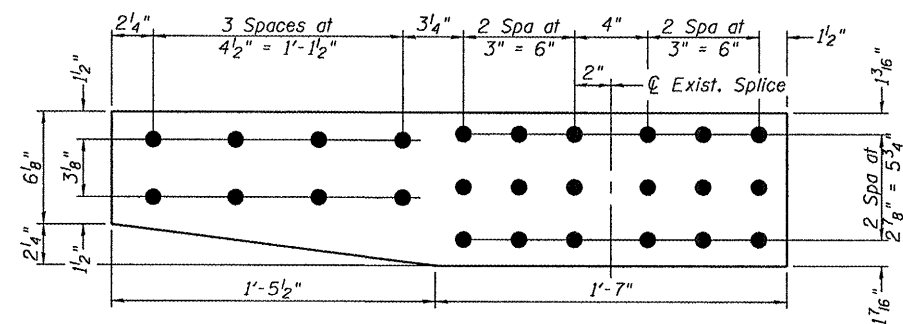
Existing clip \bar{L} 's to be removed using the air-arc method, being careful not to damage diaphragm to remain.



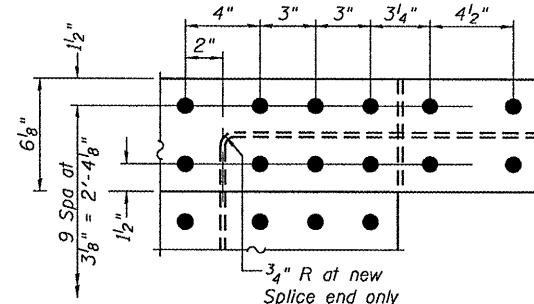
**DIAPHRAGM SECTION
AT BEAM 8**



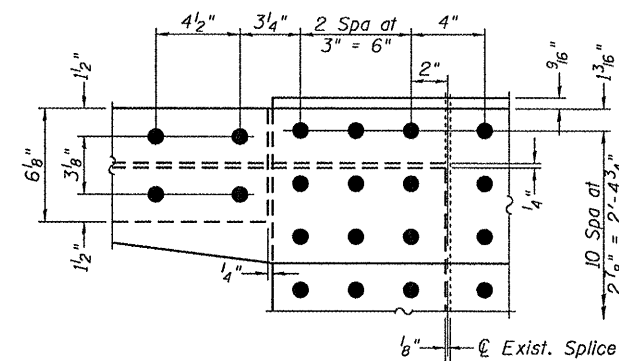
CONTINUITY BAR A
 \bar{L} 2" X 6" X 3'-0 1/2"
(10 Req'd)



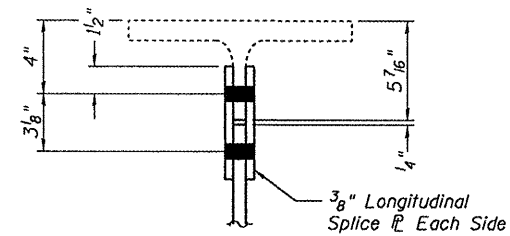
CONTINUITY BAR B
 \bar{L} 2" X 8 3/8" X 3'-0 1/2"
(2 Req'd)



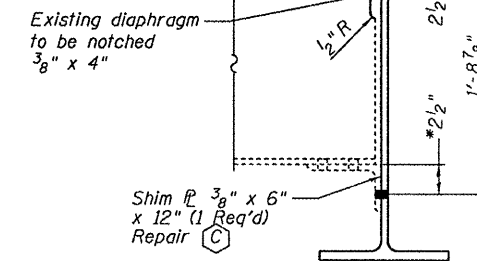
ENLARGED DETAIL A



ENLARGED DETAIL B



TYPICAL SPLICE SECTION



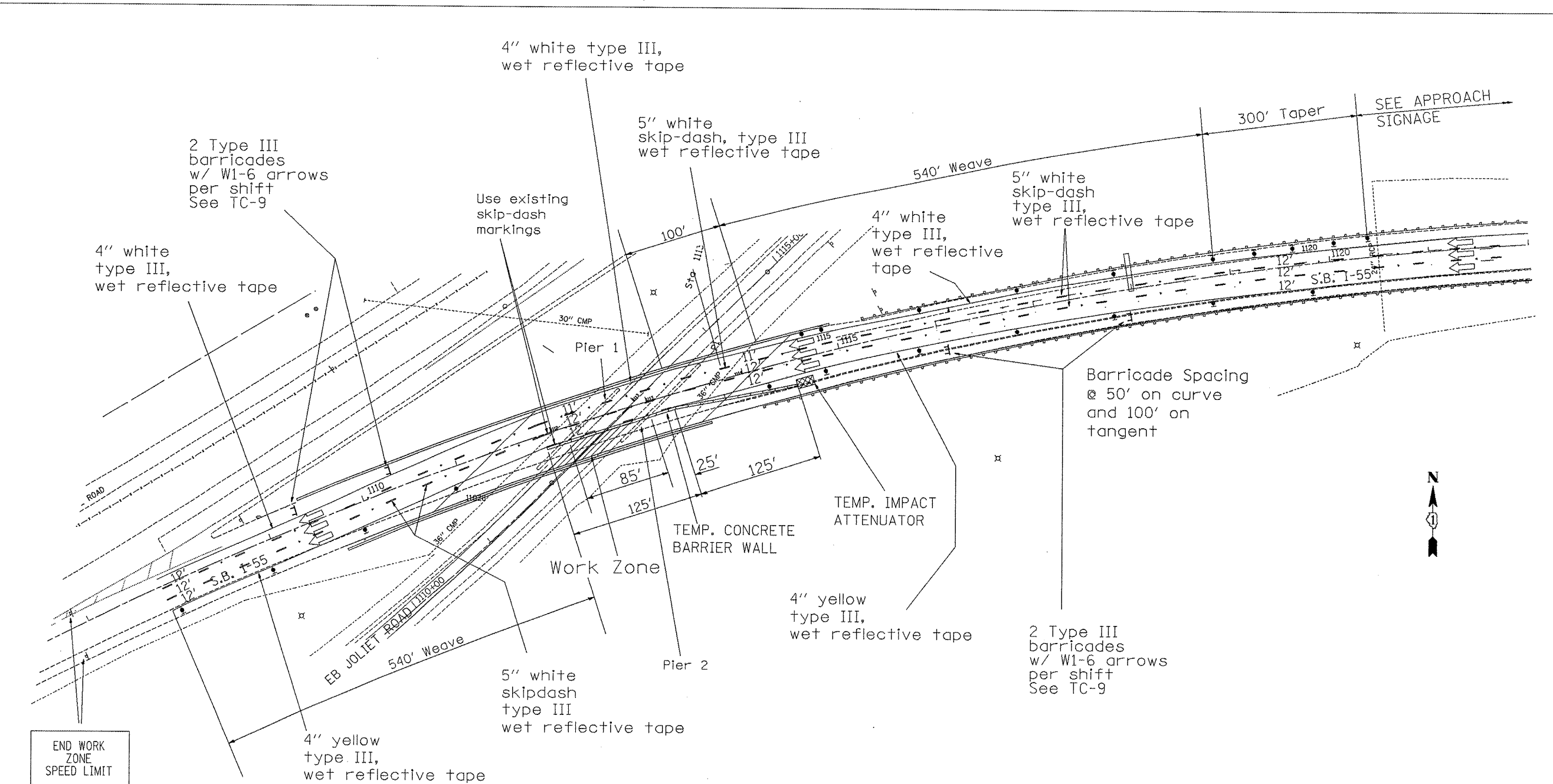
TYPICAL SECTION AT DIAPHRAGM

DESIGNED	V.H.V.
CHECKED	A.T.H.
DRAWN	Drew Christopher
CHECKED	V.H.V. A.T.H.

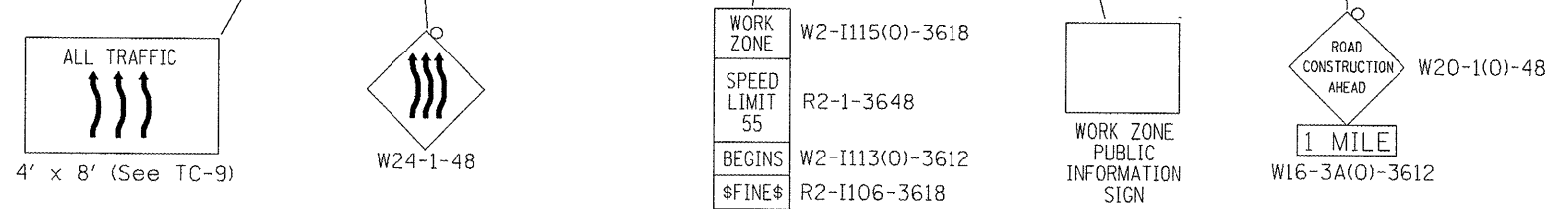
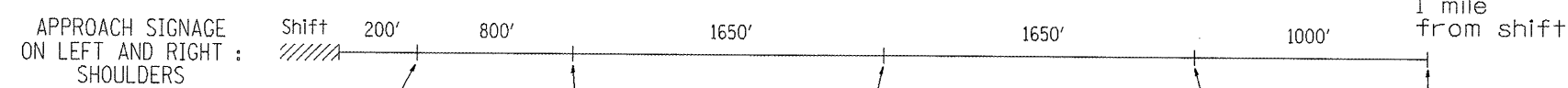
EXAMINED	March 9, 2009
PASSED	Carl Perry ENGINEER OF STRUCTURAL SERVICES
	Ralph E. Anderson ENGINEER OF BRIDGES AND STRUCTURES

SHEET NO. 3 3 SHEETS	F.A. RTE.	SECTION	COUNTY	TOTAL SHEETS	SHEET NO.
	55	0101-601 HB-1	Cook	13	7
	SN 016-0001		CONTRACT NO. 60G06		
FED. ROAD DIST. NO.		ILLINOIS FED. AID PROJECT			

DETAILS



G20-I103(O)-3660



- LEGEND:
- TEMPORARY CONCRETE BARRIER
 - TYPE II BARRICADES INSTALLED & SPACED AS PER STANDARD 701411 & TC-9 W/ STEADY BURN MONO- DIRECTIONAL LIGHTS
 - TEMPORARY IMPACT ATTENUATOR FOR ADDITIONAL DETAILS NOT SHOWN SEE SINGLE LANE WEAVE TC-9

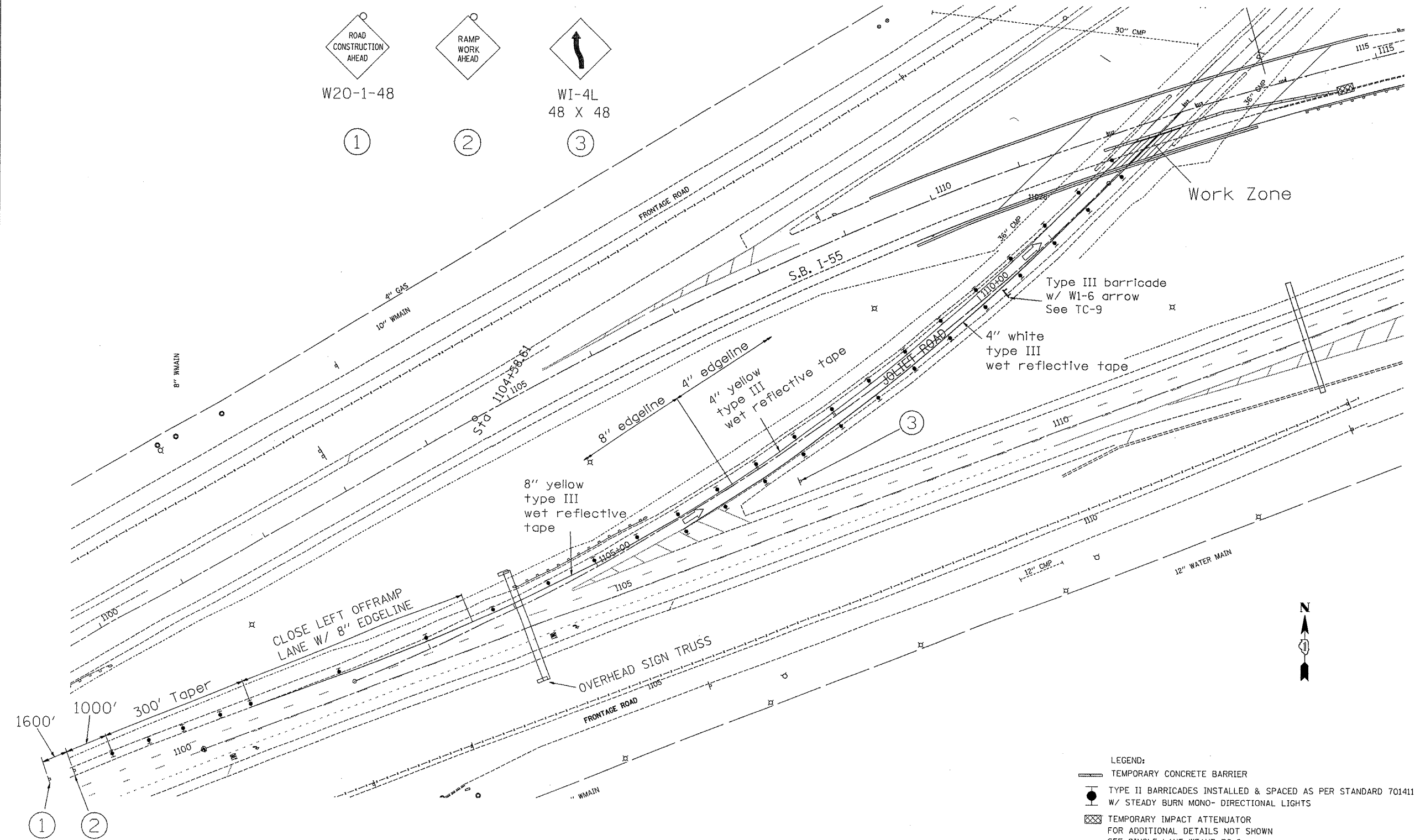
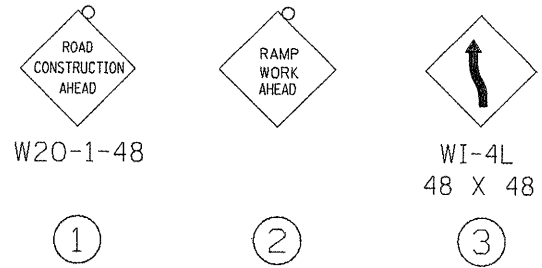
FILE NAME =	USER NAME =	DESIGNED -	REVISED -
cr:\pw_work\PW1001\RODRIGUEZ\10125189\032189\sh-t-plan.dgn	rodri-guezj	DRAWN -	REVISED -
PLOT SCHL = 34.0000 / IN		CHECKED -	REVISED -
PLOT DATE = 4/8/2009		DATE -	REVISED -

STATE OF ILLINOIS
DEPARTMENT OF TRANSPORTATION

SOUTHBOUND I-55 OVER JOLIET RD
TRAFFIC CONTROL PLAN

SCALE: SHEET NO. OF SHEETS STA. TO STA.

F.A.I. RTE.	SECTION	COUNTY	TOTAL SHEETS	SHEET NO.
55	0101-601 HB-1	COOK	13	8
CONTRACT NO. 60G06			ILLINOIS FED. AID PROJECT	



- LEGEND:
- TEMPORARY CONCRETE BARRIER
 - TYPE II BARRICADES INSTALLED & SPACED AS PER STANDARD 701411 & TC-9 W/ STEADY BURN MONO-DIRECTIONAL LIGHTS
 - ⊠ TEMPORARY IMPACT ATTENUATOR FOR ADDITIONAL DETAILS NOT SHOWN SEE SINGLE LANE WEAVE TC-9

FILE NAME =	USER NAME = rodriqaezj	DESIGNED -	REVISED -
ct\pwork\VPW101\RODRIGUEZJ\08125189\0	32109\shh-plan.dgn	DRAWN -	REVISED -
	PLOT SCALE = 34,0000' / IN.	CHECKED -	REVISED -
	PLOT DATE = 4/3/2009	DATE -	REVISED -

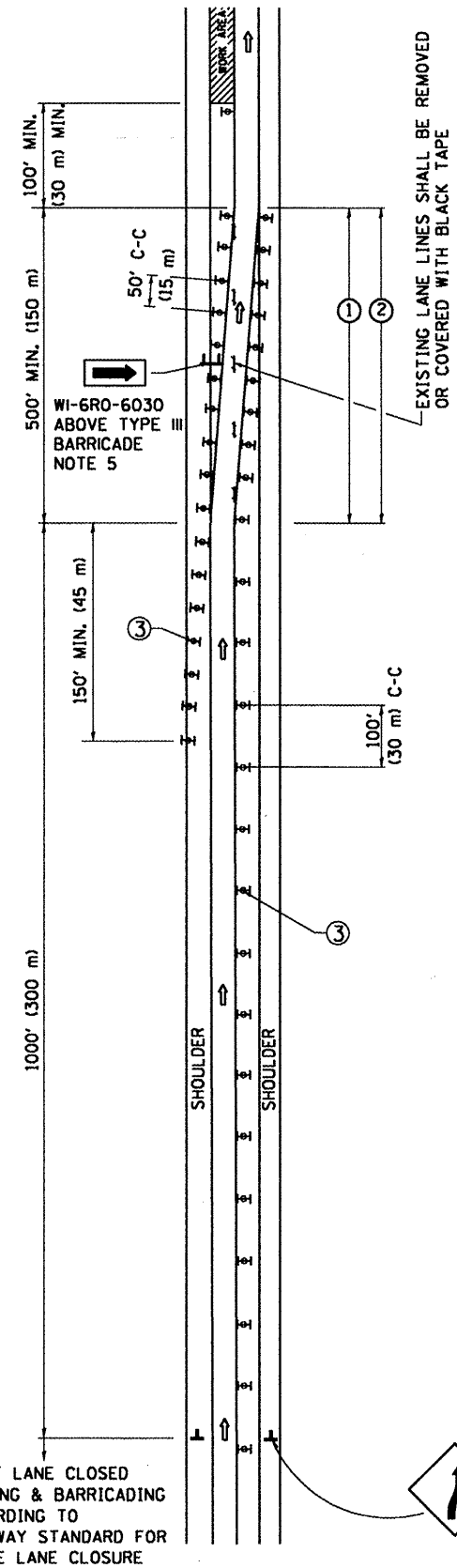
**STATE OF ILLINOIS
DEPARTMENT OF TRANSPORTATION**

EB JOLIET RD TRAFFIC CONTROL PLAN

SCALE: SHEET NO. OF SHEETS STA. TO STA.

F.A.I. RTE.	SECTION	COUNTY	TOTAL SHEETS	SHEET NO.
55	0101-601 HB-1	COOK	13	9
CONTRACT NO. 60G06			ILLINOIS FED. AID PROJECT	

SINGLE LANE WEAVE

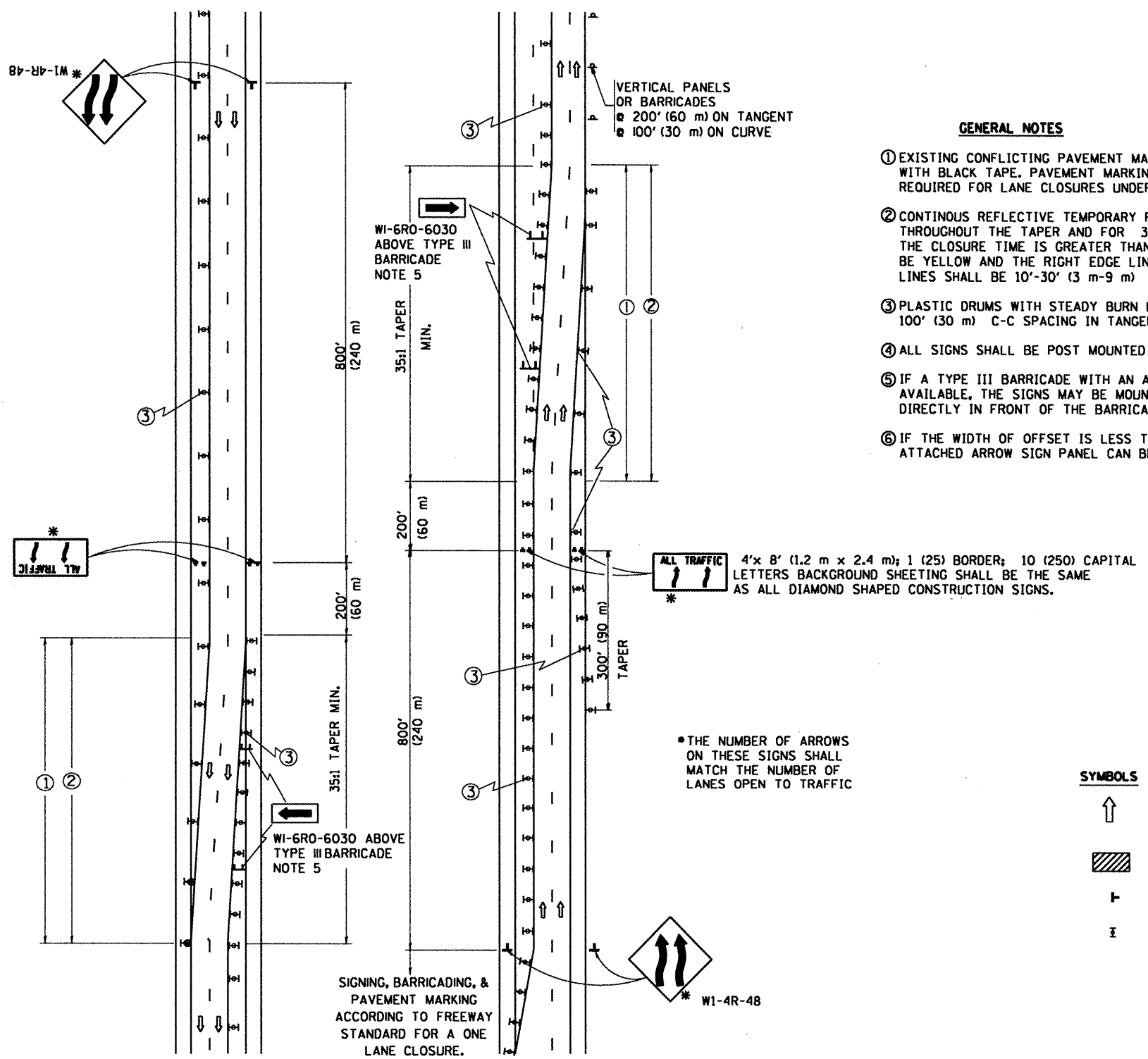


RIGHT LANE CLOSED
SIGNING & BARRICADING
ACCORDING TO
FREEWAY STANDARD FOR
A ONE LANE CLOSURE



W1-4R-48

MULTI-LANE WEAVE






W1-4R-48

GENERAL NOTES

- ① EXISTING CONFLICTING PAVEMENT MARKING LINES SHALL BE REMOVED OR COVERED WITH BLACK TAPE. PAVEMENT MARKING REMOVAL OR BLACK TAPE SHALL NOT BE REQUIRED FOR LANE CLOSURES UNDER 24 HOURS IN DURATION.
- ② CONTINUOUS REFLECTIVE TEMPORARY PAVEMENT MARKING TAPE SHALL BE PLACED THROUGHOUT THE TAPER AND FOR 300' (90 m) ALONG SIDE THE WORK AREA WHERE THE CLOSURE TIME IS GREATER THAN FOURTEEN DAYS. THE LEFT EDGE LINE SHALL BE YELLOW AND THE RIGHT EDGE LINE SHALL BE WHITE. FOR MULTI-LANE WEAVE LANE LINES SHALL BE 10'-30' (3 m-9 m) SKIP DASH, WHITE.
- ③ PLASTIC DRUMS WITH STEADY BURN LIGHTS AT 50' (15 m) C-C SPACING IN TAPERS AND 100' (30 m) C-C SPACING IN TANGENTS.
- ④ ALL SIGNS SHALL BE POST MOUNTED IF THE CLOSURE TIME EXCEEDS FOUR DAYS.
- ⑤ IF A TYPE III BARRICADE WITH AN ATTACHED SIGN PANEL WHICH MEETS NCHRP 350 IS NOT AVAILABLE, THE SIGNS MAY BE MOUNTED ON NCHRP 350 TEMPORARY SIGN SUPPORTS DIRECTLY IN FRONT OF THE BARRICADE.
- ⑥ IF THE WIDTH OF OFFSET IS LESS THAN 6' THEN THE TYPE III BARRICADE WITH ATTACHED ARROW SIGN PANEL CAN BE ELIMINATED IN THE TAPER AREAS.

SYMBOLS

- ↑ DIRECTION OF TRAFFIC
 WORK AREA
 SIGN ON PORTABLE OR PERMANENT SUPPORT
 TYPE II BARRICADE, DRUM OR VERTICAL BARRICADE WITH MONO-DIRECTIONAL STEADY BURNING LIGHT

* THE NUMBER OF ARROWS ON THESE SIGNS SHALL MATCH THE NUMBER OF LANES OPEN TO TRAFFIC

SIGNING, BARRICADING, & PAVEMENT MARKING ACCORDING TO FREEWAY STANDARD FOR A ONE LANE CLOSURE.

ALL DIMENSIONS ARE IN INCHES (MILLIMETERS)
UNLESS OTHERWISE SHOWN

FILE NAME =	USER NAME = radriguezj	DESIGNED - DWS	REVISED - DWS 11-96
at\p_w\work\p\rdot\rd\rdiguezj\rd\rdiguezj\rd\rdiguezj\rd\rdiguezj	cStd.dgn	DRAWN -	REVISED - JAF 01-03
	PLOT SCALE = 1/8" = 1' IN.	CHECKED -	REVISED - JAF 02-06
	PLOT DATE = 2/25/2009	DATE - 02-87	REVISED - SPB 01-07

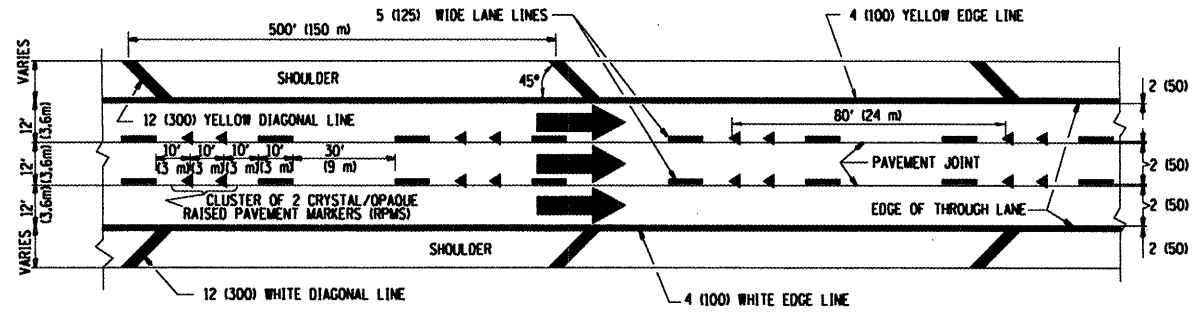
STATE OF ILLINOIS
DEPARTMENT OF TRANSPORTATION

TRAFFIC CONTROL DETAILS FOR
FREEWAY SINGLE & MULTI-LANE WEAVE

SCALE: NONE SHEET NO. 1 OF 1 SHEETS STA. TO STA.

F.A.I. RTE.	SECTION	COUNTY	TOTAL SHEETS	SHEET NO.
55	0101-601 HB-1	COOK	13	10
TC-09		CONTRACT NO. 60G06		
FED. ROAD DIST. NO. 1 ILLINOIS FED. AID PROJECT				

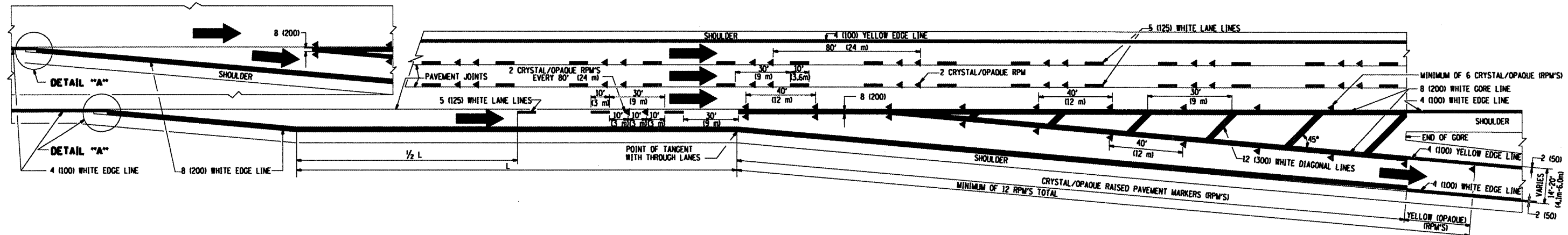
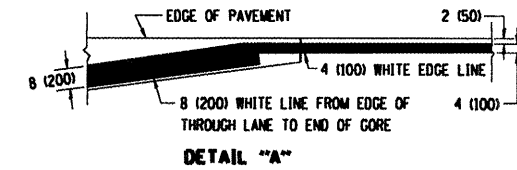
THE DIAGONAL LINES SHALL BE SPACED AT 40' (12 m) C-C ACROSS ALL STRUCTURES WHICH ARE 500' (150 m) OR LESS IN LENGTH
 THE DIAGONAL LINES ARE NOT REQUIRED ON SHOULDERS WHICH ARE 6' (1.8 m) OR LESS IN WIDTH



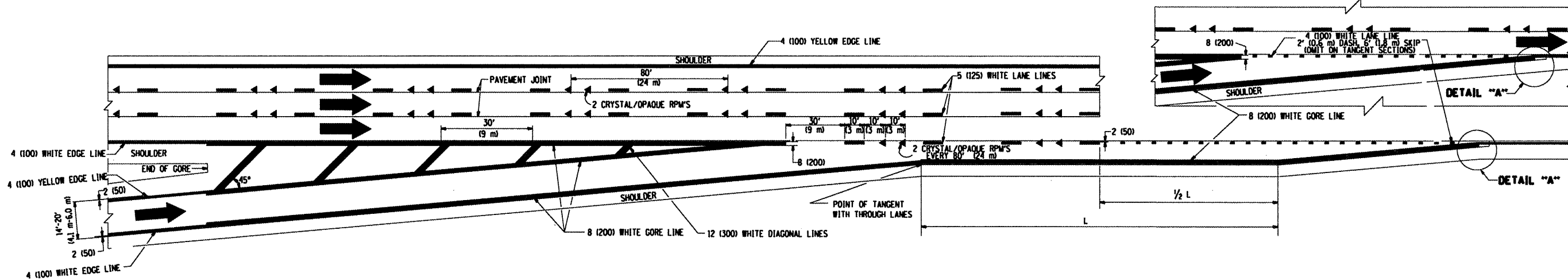
TYPICAL EDGE LINES & LANE LINES

NOTES:

1. THERMO PLASTIC PAVEMENT MARKING LINE SHALL BE USED FOR THE EDGE LINES, GORE LINES, AND DIAGONAL LINES ON BITUMINOUS PAVEMENT ONLY.
2. PREFORMED PLASTIC TYPE B PAVEMENT MARKING LINE SHALL BE USED FOR ALL LANE LINES ON BITUMINOUS PAVEMENT
3. POLYUREA PAVEMENT MARKING SHALL BE USED FOR ALL MARKINGS ON PCC

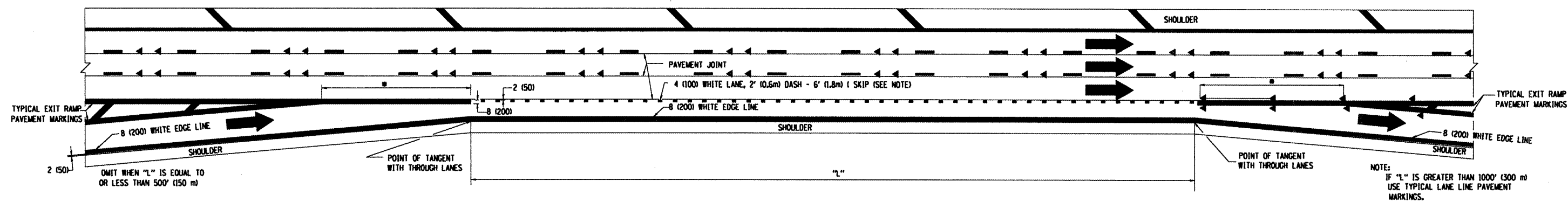


TYPICAL EXIT RAMP PAVEMENT MARKINGS

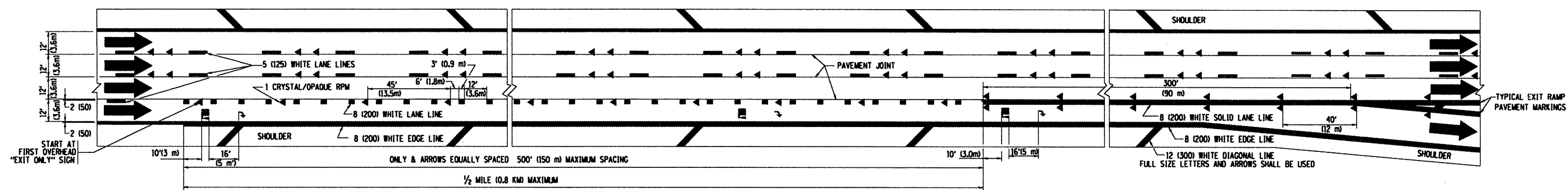


TYPICAL ENTRANCE RAMP PAVEMENT MARKINGS

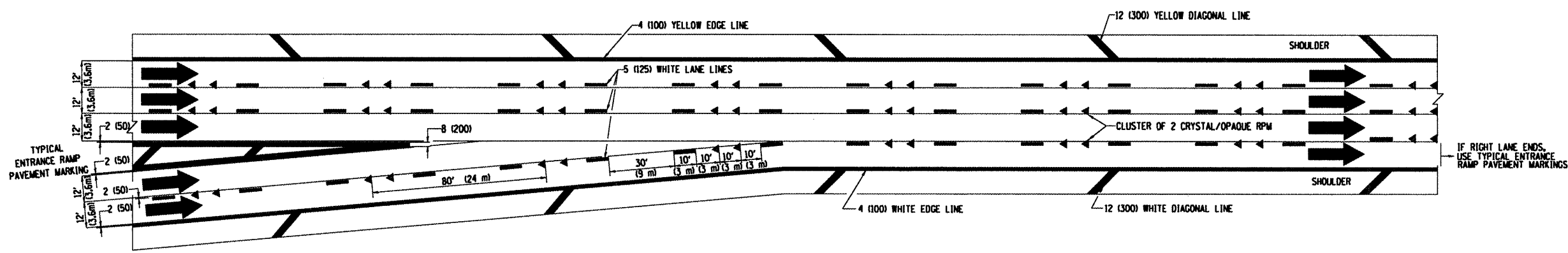
FILE NAME =	USER NAME = rodri-guezj	DESIGNED - D.W.S.	REVISED - A.H. 03-96	STATE OF ILLINOIS DEPARTMENT OF TRANSPORTATION	MULTI-LANE FREEWAY PAVEMENT MARKING DETAILS		F.A.I. RTE.	SECTION	COUNTY	TOTAL SHEETS	SHEET NO.	
at:\pwork\pvidot\rodri-guezj\08125189\0	Std.dgn	DRAWN -	REVISED - D.W.S. 07-96		SCALE: NONE	SHEET NO. 1 OF 2 SHEETS	STA.	55	0101-601 HB-1	COOK	13	11
	PLOT SCALE = 100.0000' / IN.	CHECKED -	REVISED - J.A.F. 02-06				TO STA.		TC-12			
	PLOT DATE = 2/25/2009	DATE - 01-90	REVISED - S.P.B. 01-07									
							FED. ROAD DIST. NO. 1 ILLINOIS FED. AID PROJECT		CONTRACT NO. 60G06			



TYPICAL ENTRANCE/EXIT RAMP COMBINATION PAVEMENT MARKINGS



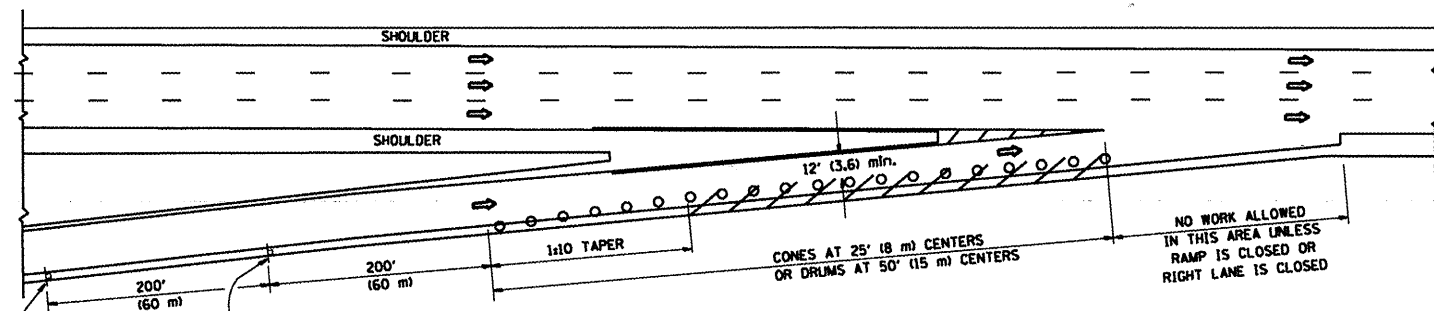
TYPICAL EXIT ONLY LANE PAVEMENT MARKINGS



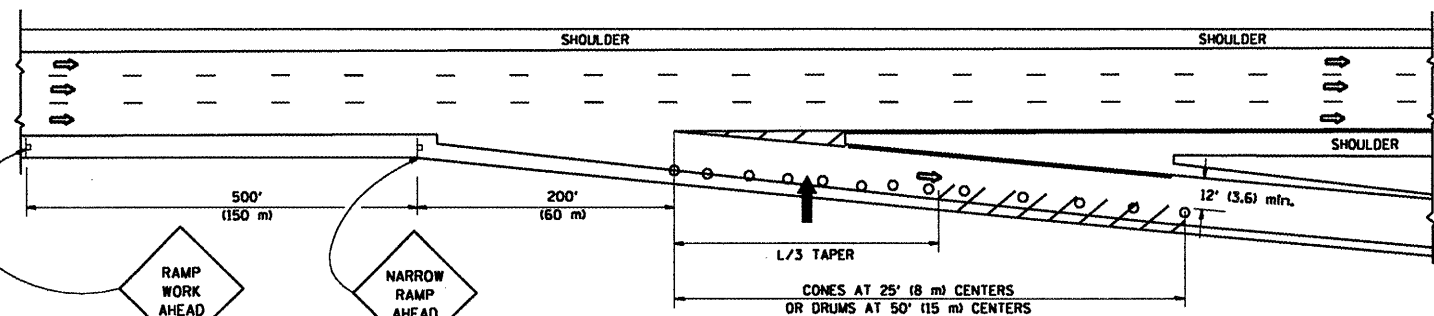
TYPICAL TWO LANE ENTRANCE RAMP PAVEMENT MARKINGS

FILE NAME =	USER NAME = rodriguezj	DESIGNED - D.W.S.	REVISED - A.H. 03-96	STATE OF ILLINOIS DEPARTMENT OF TRANSPORTATION	MULTI-LANE FREEWAY PAVEMENT MARKING DETAILS			F.A.I. RTE.	SECTION	COUNTY	TOTAL SHEETS	SHEET NO.
al\pwwork\pwwidat\rodriguezj\d0125189\01	ESTD.dgn	DRAWN -	REVISED - D.W.S. 07-96		55	0101-601 HB-1	COOK	13	12			
PLOT SCALE = 100.0000 / IN.	CHECKED -	REVISED - J.A.F. 02-06	SCALE: NONE		SHEET NO. 2 OF 2 SHEETS		STA.	TO STA.	FED. ROAD DIST. NO. 1 ILLINOIS FED. AID PROJECT			
PLOT DATE = 2/25/2009	DATE - 01-90	REVISED - S.P.B. 01-07					CONTRACT NO. 60G06					

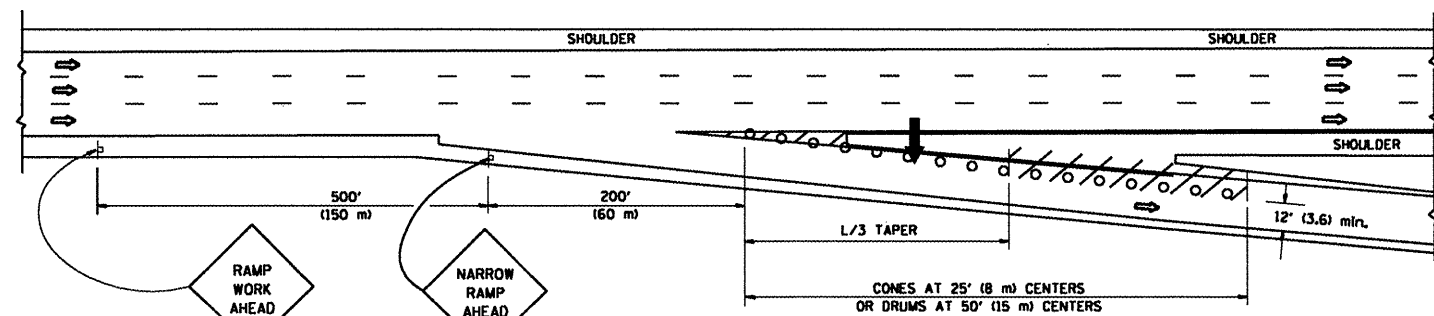
PARTIAL RAMP CLOSURE DETAILS



TYPICAL ENTRANCE RAMP



TYPICAL EXIT RAMP



TYPICAL EXIT RAMP

SYMBOLS

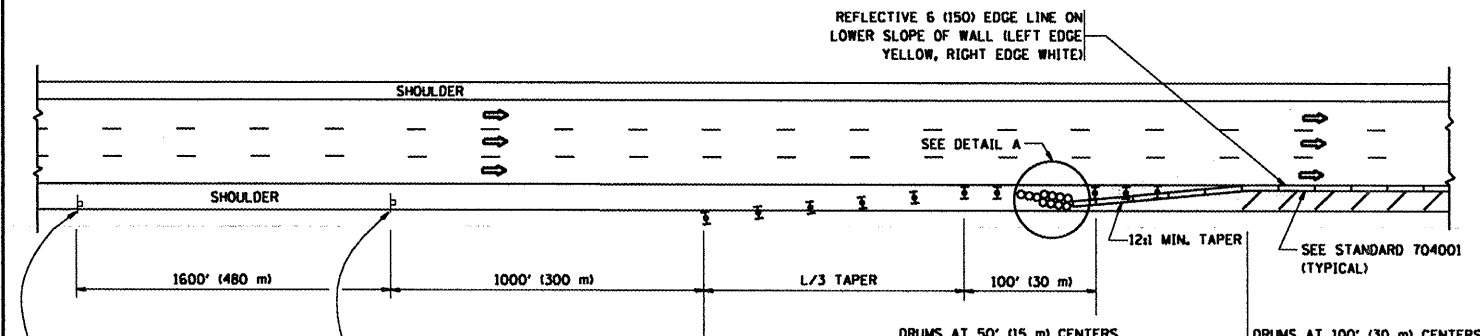
- ➔ ARROWBOARD
- ▨ WORK AREA
- ┆ SIGN ON PORTABLE OR PERMANENT SUPPORT
- FLAGGER WITH CONTROL SIGN
- ⊠ TYPE II BARRICADE, DRUM OR VERTICAL BARRICADE WITH STEADY BURN MONO-DIRECTIONAL LIGHT
- CONE, DRUM OR BARRICADE

GENERAL NOTES

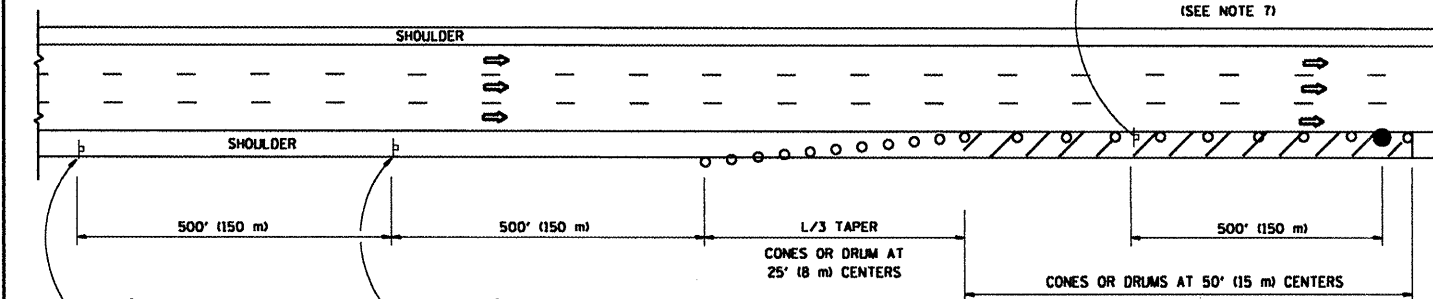
1. THE "L" DISTANCE EQUALS:

SPEED LIMIT	FORMULAS
45 mph (80 km/h) OR GREATER:	METRIC $L=0.65(W+S)$ ENGLISH $L=(W+S)$
W = WIDTH OF OFFSET IN FEET (METERS)	S = NORMAL POSTED SPEED MPH (KM/H)
2. PLASTIC DRUMS WITH HIGH PERFORMANCE REFLECTIVE SHEETING AND STEADY BURNING LIGHTS ARE REQUIRED FOR ALL NIGHTTIME CLOSURES.
3. ALL SIGNS SHALL BE POST MOUNTED IF THE CLOSURE TIME EXCEEDS FOUR DAYS.
4. FLASHING LIGHTS SHALL BE USED DURING THE HOURS OF DARKNESS AND SHALL BE INSTALLED ABOVE THE FIRST TWO SETS OF SIGNS.

SHOULDER CLOSURE DETAILS



PERMANENT SHOULDER CLOSURE



DAYTIME SHOULDER CLOSURE

ARRAY DESIGN PER MANUFACTURER TO BE NCHRP 350 COMPLIANT FOR POSTED SPEED.

DETAIL "A" IMPACT ATTENUATOR, TEMPORARY (SEE NOTE 5)

ALL DIMENSIONS ARE IN INCHES (MILLIMETERS) UNLESS OTHERWISE SHOWN.

FILE NAME =	USER NAME = rodriquezj	DESIGNED -	REVISED - J.A.F. 12-02	STATE OF ILLINOIS DEPARTMENT OF TRANSPORTATION	TRAFFIC CONTROL DETAILS FOR FREEWAY SHOULDER CLOSURES AND PARTIAL RAMP CLOSURES			F.A.I. RTE.	SECTION	COUNTY	TOTAL SHEETS	SHEET NO.
ci:\pwork\pawdot\rodriquezj\d0125189\0115std.dgn	DRAWN - D.W.S.	CHECKED -	REVISED - 04-03		55	0101-601 HB-1	COOK	13	13			
PLOT SCALE = 1/8" = 1' IN.	DATE - 11-96	REVISOR - J.A.F. 12-06	REVISED - S.P.B. 01-07		TC-17			CONTRACT NO. 60G06				
PLOT DATE = 2/25/2009	SCALE: NONE	SHEET NO. 1 OF 1 SHEETS	STA. TO STA.		FED. ROAD DIST. NO. 1 (ILLINOIS) FED. AID PROJECT							