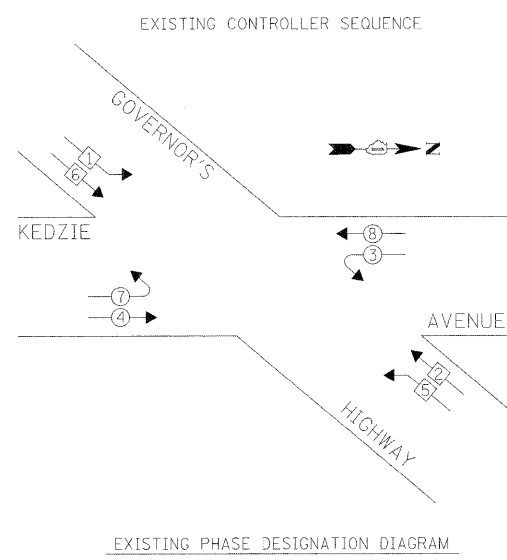
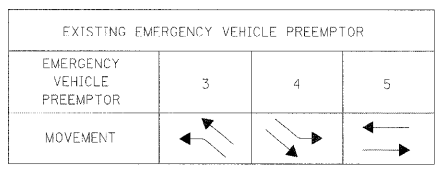
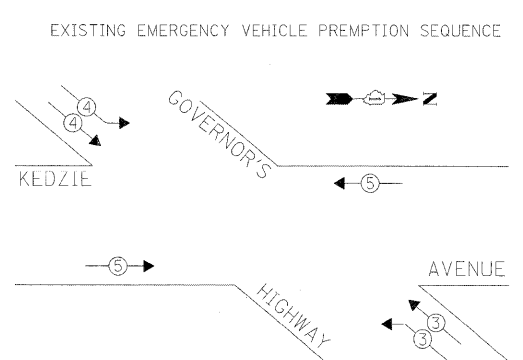


CABLE PLAN LEGEND

- | PROPOSED | EXISTING | |
|----------|----------|---|
| | | 8" (200mm) TRAFFIC SIGNAL SECTION |
| | | 12" (300mm) TRAFFIC SIGNAL SECTION |
| | | 12" (300mm) PEDESTRIAN SIGNAL SECTION |
| | | 12" (300mm) PEDESTRIAN SIGNAL SECTION |
| | | CONTROLLER CABINET |
| | | SERVICE INSTALLATION |
| | | TELEPHONE CONNECTION |
| | | MAGNETIC DETECTOR |
| | | PUSHBUTTON DETECTOR |
| | | VEHICLE DETECTOR, INDUCTION LOOP |
| | | DENOTES NUMBER OF CONDUCTORS. ALL CABLE NO. 14 EXCEPT AS INDICATED. ALL LOOP DETECTOR CABLE TO BE SHIELDED. |
| | | SIGNAL FACE WITH BACKPLATE. "P" INDICATES PROGRAMMED HEAD |
| | | RAILROAD CONTROL CABINET |
| | | ILLUMINATED SIGN, FIBER OPTIC "NO LEFT TURN" |
| | | ILLUMINATED SIGN, FIBER OPTIC "NO RIGHT TURN" |
| | | GROUND ROD AT HANDHOLE, DOUBLE HANDHOLE, OR CONTROLLER |
| | | GROUND ROD AT POST OR MAST ARM POLE |
| | | GROUND ROD AT ELECTRIC SERVICE INSTALLATION |
| | | GROUND CABLE IN CONDUIT NO. 6 SOLID COPPER (GREEN) |
| | | FIBER OPTIC CABLE IN CONDUIT NO. 62.5/125 2-MM12F & 5M12F |
| | | MICROWAVE VEHICLE SENSOR |
| | | VIDEO DETECTOR |
| | | CLOSED CIRCUIT TV |
| | | EMERGENCY VEHICLE LIGHT DETECTOR |
| | | CONFIRMATION BEACON |
| | | UNINTERRUPTIBLE POWER SUPPLY |
| | | WIRELESS INTERCONNECT (ANTENNA) |



- LEGEND**
- SINGLE ENTRY PHASE
 - DUAL ENTRY PHASE
 - OVERLAP
 - PEDESTRIAN PHASE
 - NUMBER REFERS TO ASSOCIATED PHASE



I.D.O.T. TRAFFIC SIGNAL INSTALLATION ELECTRICAL SERVICE REQUIREMENTS					TOTAL WATTAGE
TYPE	NO. LAMPS	WATTAGE INCAND.	WATTAGE LED	% OPERATION	
SIGNAL (RED)	18	135		0.50	1215.0
(YELLOW)	18	135		0.25	607.5
(GREEN)	18	135		0.25	607.5
ARROW	12	135		0.10	162.0
PED. SIGNAL				1.00	
CONTROLLER	1	100		1.00	100.0
ILLUM. SIGN				0.05	
FLASHER				0.05	
ENERGY COSTS TO: VILLAGE OF FLOSSMOOR, 2800 FLOSSMOOR ROAD, FLOSSMOOR, IL 60422					TOTAL= 2692.0
ENERGY SUPPLY	CONTACT: GREG TRIEMSTRA				
	PHONE: (708) 235-2331				
	COMPANY: COMMONWEALTH EDISON				

FILE NAME = P:\VP-08-1600-4\Design\2_Governors Hwy at Kedzie\Shht\SHHT009.dgn	USER NAME = #USER# Kedzie\Shht\SHHT009.dgn	DESIGNED - NB/TCM	REVISED -
		DRAWN - NB/TCM	REVISED -
		CHECKED - NB/TCM	REVISED -
		DATE - 01/23/2009	REVISED -

STATE OF ILLINOIS DEPARTMENT OF TRANSPORTATION

EXISTING CABLE PLAN GOVERNOR HIGHWAY AT KEDZIE AVENUE

SCALE: NTS SHEET NO. OF SHEETS STA. TO STA.

F.A.U. RTE. 2820	SECTION 2009-011 TS	COUNTY COOK	TOTAL SHEETS 13	SHEET NO. 9
FED. ROAD DIST. NO. ILLINOIS		FED. AID PROJECT CONTRACT NO. 60609		