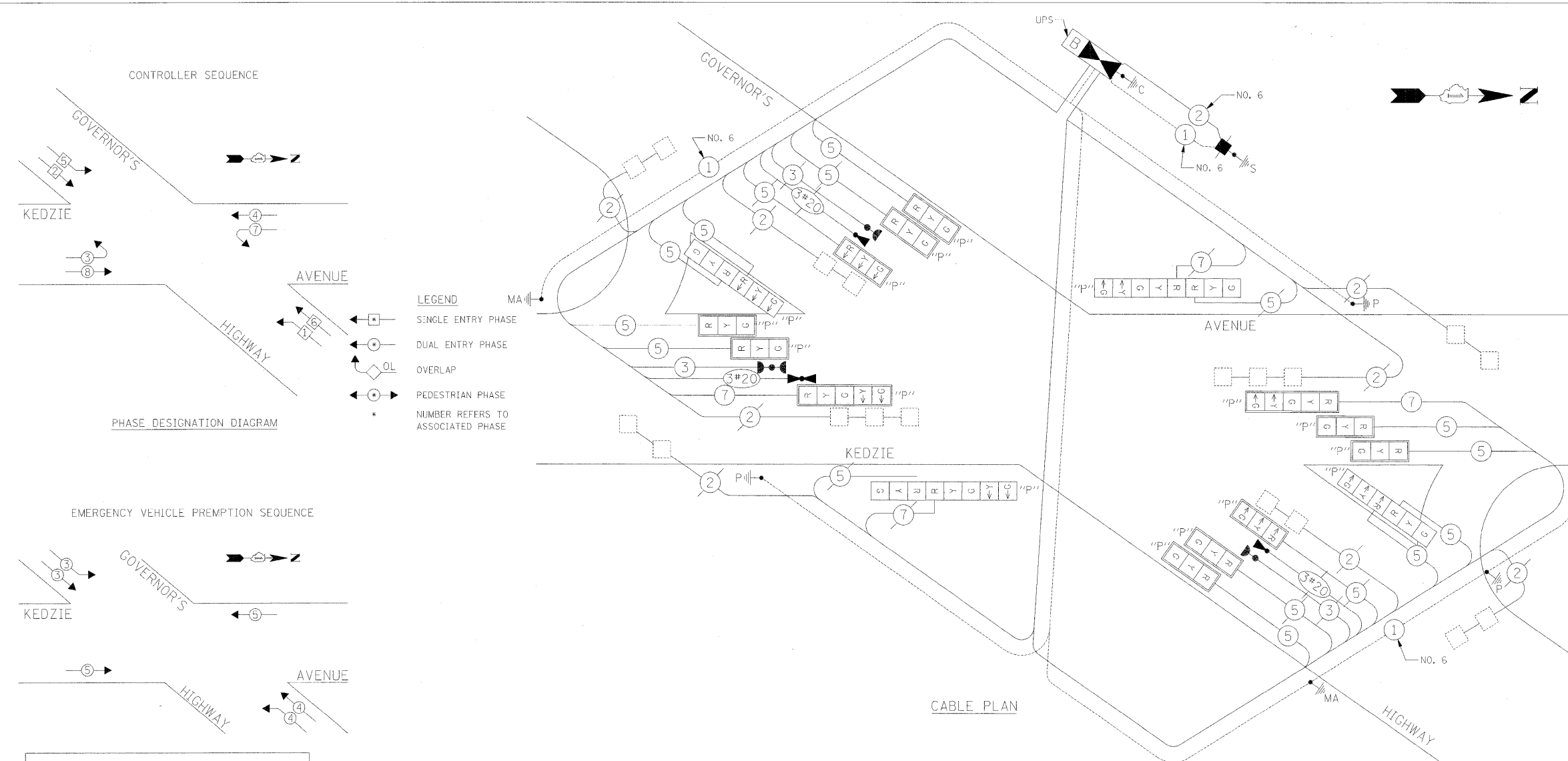


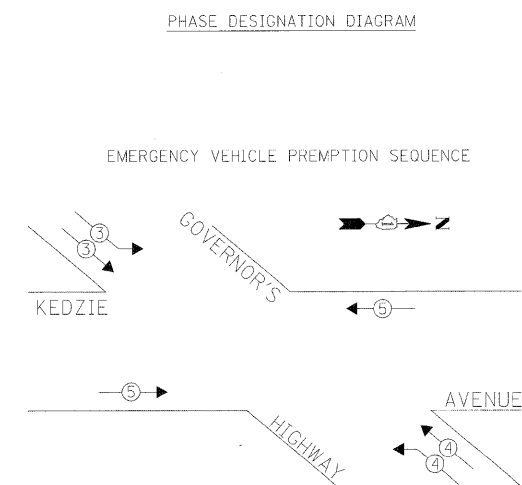
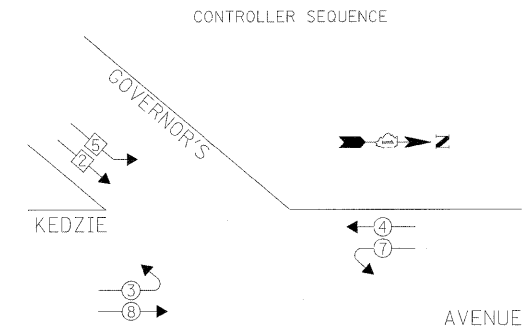
CABLE PLAN LEGEND

PROPOSED	EXISTING	
		8" (200mm) TRAFFIC SIGNAL SECTION
		12" (300mm) TRAFFIC SIGNAL SECTION
		12" (300mm) PEDESTRIAN SIGNAL SECTION
		12" (300mm) PEDESTRIAN SIGNAL SECTION
		CONTROLLER CABINET
		SERVICE INSTALLATION
		TELEPHONE CONNECTION
		MAGNETIC DETECTOR
		PUSHBUTTON DETECTOR
		VEHICLE DETECTOR, INDUCTION LOOP
		VEHICLE DETECTOR, INDUCTION LOOP
		DENOTES NUMBER OF CONDUCTORS. ALL CABLE NO. 14 EXCEPT AS INDICATED. ALL LOOP DETECTOR CABLE TO BE SHIELDED.
		SIGNAL FACE WITH BACKPLATE. "P" INDICATES PROGRAMMED HEAD
		RAILROAD CONTROL CABINET
		ILLUMINATED SIGN, FIBER OPTIC "NO LEFT TURN"
		ILLUMINATED SIGN, FIBER OPTIC "NO RIGHT TURN"
		GROUND ROD AT HANDHOLE, DOUBLE HANDHOLE, OR CONTROLLER
		GROUND ROD AT POST OR MAST ARM POLE
		GROUND ROD AT ELECTRIC SERVICE INSTALLATION
		GROUND CABLE IN CONDUIT NO. 6 SOLID COPPER (GREEN)
		FIBER OPTIC CABLE IN CONDUIT NO. 62.5/125 2-MMI2F & SM12F
		MICROWAVE VEHICLE SENSOR
		VIDEO DETECTOR
		CLOSED CIRCUIT TV
		EMERGENCY VEHICLE LIGHT DETECTOR
		CONFIRMATION BEACON
		UNINTERRUPTIBLE POWER SUPPLY
		PEDESTRIAN SIGNAL HEAD WITH COUNTDOWN TIMER



LEGEND

	SINGLE ENTRY PHASE
	DUAL ENTRY PHASE
	OVERLAP
	PEDESTRIAN PHASE
	NUMBER REFERS TO ASSOCIATED PHASE



PROPOSED EMERGENCY VEHICLE PREEMPTOR

EMERGENCY VEHICLE PREEMPTOR	3	4	5
MOVEMENT			

SUMMARY OF QUANTITIES

QUANTITY	UNIT	ITEM	QUANTITY	UNIT	ITEM
40	SQ FT	PORTLAND CEMENT CONCRETE SIDEWALK 5 INCH	10	EACH	SIGNAL HEAD, L.E.D., 1-FACE, 3-SECTION OPTICALLY PROGRAMMED, MAST ARM MOUNTED
1	L SUM	TRAFFIC CONTROL AND PROTECTION, STANDARD 701501	2	EACH	SIGNAL HEAD, L.E.D., 1-FACE, 5-SECTION OPTICALLY PROGRAMMED, MAST ARM MOUNTED
1	L SUM	TRAFFIC CONTROL AND PROTECTION, STANDARD 701601	2	EACH	SIGNAL HEAD, L.E.D., 2-FACE, 1-3 SECTION, 1-3 SECTION OPTICALLY PROGRAMMED, BRACKET MOUNTED
1	L SUM	TRAFFIC CONTROL AND PROTECTION, STANDARD 701701	2	EACH	SIGNAL HEAD, L.E.D., 2-FACE, 1-3 SECTION, 1-5 SECTION OPTICALLY PROGRAMMED, BRACKET MOUNTED
1	L SUM	TRAFFIC CONTROL AND PROTECTION, STANDARD 701801	12	EACH	TRAFFIC SIGNAL BACKPLATE, LOUVERED, ALUMINUM
18	SQ FT	SIGN PANEL - TYPE 1	8	EACH	INDUCTIVE LOOP DETECTOR
343	FOOT	THERMOPLASTIC PAVEMENT MARKING - LINE 24"	* 3	EACH	LIGHT DETECTOR
686	SQ FT	THERMOPLASTIC PAVEMENT MARKING REMOVAL	* 1	EACH	LIGHT DETECTOR AMPLIFIER
12	FOOT	CONDUIT PUSHED, 3" DIA., GALVANIZED STEEL	4058	EACH	REMOVE ELECTRIC CABLE FROM CONDUIT
1	EACH	MAINTENANCE OF EXISTING TRAFFIC SIGNAL INSTALLATION	1	EACH	REMOVE EXISTING TRAFFIC SIGNAL EQUIPMENT
1	EACH	FULL-ACTUATED CONTROLLER AND TYPE IV CABINET	2	EACH	REMOVE EXISTING CONCRETE FOUNDATION
1	EACH	UNINTERRUPTIBLE POWER SUPPLY	102.8	SQ FT	TEMPORARY INFORMATION SIGNING
632	FOOT	ELECTRIC CABLE IN CONDUIT, SIGNAL NO. 14 3C	1	EACH	SERVICE INSTALLATION, POLE MOUNT
2356	FOOT	ELECTRIC CABLE IN CONDUIT, SIGNAL NO. 14 5C			
650	FOOT	ELECTRIC CABLE IN CONDUIT, SIGNAL NO. 14 7C			
97	FOOT	ELECTRIC CABLE IN CONDUIT, SERVICE, NO. 6 2C			
794	FOOT	ELECTRIC CABLE IN CONDUIT, GROUNDING, NO. 6 1C			
* 323	FOOT	ELECTRIC CABLE IN CONDUIT, NO. 20 3C, TWISTED, SHIELDED			
2	EACH	TRAFFIC SIGNAL POST, GALVANIZED STEEL 16 FT.			
1	EACH	STEEL MAST ARM ASSEMBLY AND POLE, 38 FT.			
1	EACH	STEEL MAST ARM ASSEMBLY AND POLE, 40 FT.			
22	FOOT	CONCRETE FOUNDATION, TYPE E 36" DIAMETER			
2	EACH	DRILL EXISTING HANDHOLE			

* 100% COST TO VILLAGE OF FLOSSMOOR

I.D.O.T. TRAFFIC SIGNAL INSTALLATION ELECTRICAL SERVICE REQUIREMENTS

TYPE	NO. LAMPS	WATTAGE INCAND.	WATTAGE LED	% OPERATION	TOTAL WATTAGE
SIGNAL (RED)	20	17	0.50	170.00	
(YELLOW)	20	25	0.25	125.00	
(GREEN)	20	15	0.25	75.00	
ARROW	8	12	0.10	9.60	
PED. SIGNAL	-	25	1.00	0.00	
CONTROLLER	1	100	1.00	100.00	
ILLUM. SIGN			0.05	-	
FLASHER			0.05	-	
ENERGY COSTS TO:			TOTAL=	479.60	

VILLAGE OF FLOSSMOOR
2800 FLOSSMOOR ROAD
FLOSSMOOR, IL 60422

ENERGY SUPPLY CONTACT: GREG TRIEMSTRA
PHONE: (708) 235-2331
COMPANY: COMMONWEALTH EDISON

FOUNDATION (DEPTH)	FT. (m)	CABLE SLACK	FT. (m)	VERTICAL	FT. (m)
TYPE A - POST	4 (1.2)	HANDHOLE	6.5 (2.0)	ALL FOUNDATIONS	3.5 (1.0)
D - CONTROLLER	4 (1.2)	DOUBLE HANDHOLE	13 (4.0)	MAST ARM (L) POLE	20'±L-2'±
E - M. ARM POLE	2 (1.0)	SIGNAL POST	2 (1.0)		(6m±L-0.6m)±
24" (600mm)	10 (3.0)	CONTROLLER CAB.	1 (0.5)	BRACKET MOUNTED	13 (4.0)
30" (750mm)	15 (4.6)	FIBER OPTIC	13 (4.0)	PED. PUSHBUTTON	4 (1.2)
		ELECTRIC SERVICE	1 (0.5)	ELECTRIC SERVICE	13.5 (4.1)
		GROUND CABLE	1 (0.5)	SERVICE TO GROUND	13.5 (4.1)
				POST MOUNTED	6 (1.8)

STATE OF ILLINOIS DEPARTMENT OF TRANSPORTATION

PROPOSED CABLE PLAN GOVERNOR'S HIGHWAY AND KEDZIE AVENUE

FILE NAME = P:\P-08-1600-4\Design\2-Governors Hwy at Kedzie\Sh1\SH1212.dgn	USER NAME = #USER#	DESIGNED - NB/TCM	REVISED -	SHEET NO. OF SHEETS	STA. TO STA.	F.A.U R.T.E. 2820	SECTION 2009-011 TS	COUNTY COOK	TOTAL SHEETS 13	SHEET NO. 12	CONTRACT NO. 60G09
PLOT SCALE = 1/8" = 1' IN.	DATE = 01/23/2009	CHECKED - NB/TCM	REVISED -	SCALE: NTS		FED. ROAD DIST. NO.	ILLINOIS	FED. AID PROJECT			