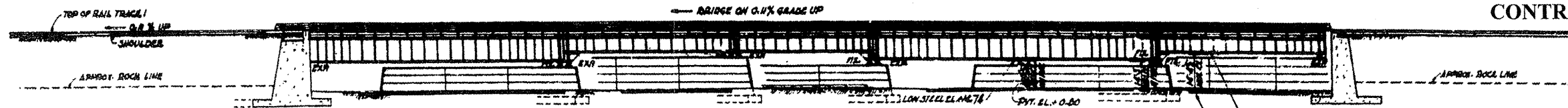


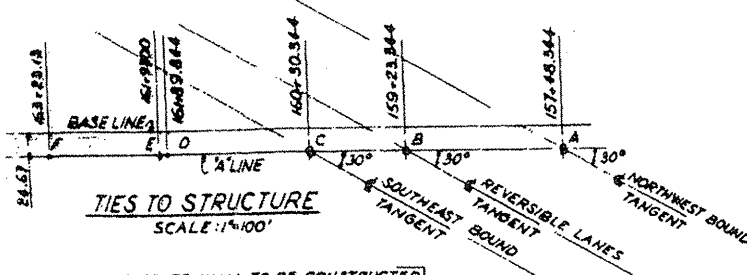
ROUTE VARIOUS	SECTION 2009-016 BP	COUNTY COOK	TOTAL SHEETS 32	SHEET NUMBER 9
------------------	------------------------	----------------	--------------------	-------------------

CONTRACT NO. 60G14



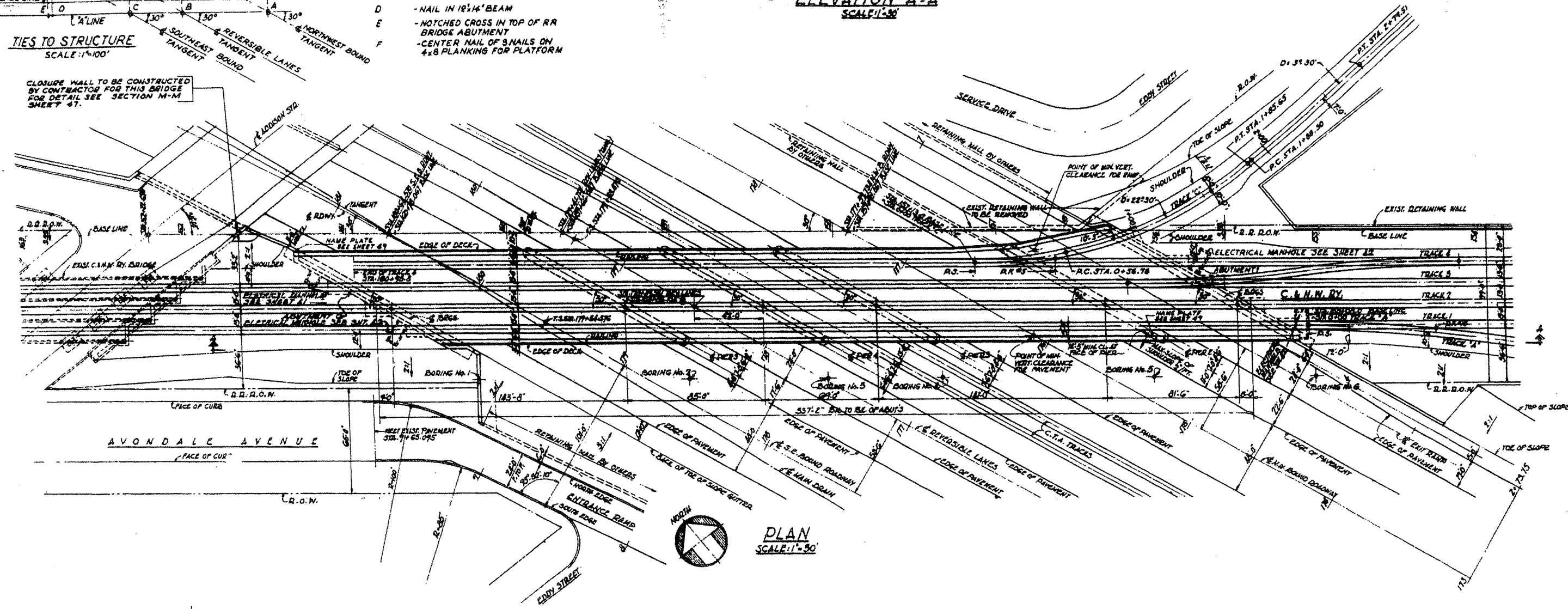
ELEVATION A-A  
SCALE: 1"=30'

- A AND C - 2x4 YELLOW STAKES WITH TACK
- B - 1/4x1/4 YELLOW STAKE WITH TACK
- D - NAIL IN 12x14 BEAM
- E - NOTCHED CROSS IN TOP OF RR BRIDGE ABUTMENT
- F - CENTER NAIL OF 8 NAILS ON 4x8 PLANKING FOR PLATFORM

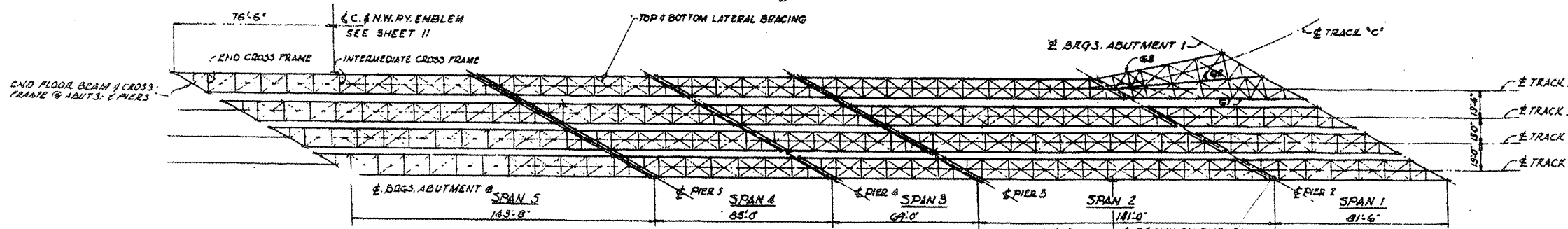


TIES TO STRUCTURE  
SCALE: 1"=100'

CLOSURE WALL TO BE CONSTRUCTED BY CONTRACTOR FOR THIS BRIDGE FOR DETAIL SEE SECTION M-M SHEET 47.



PLAN  
SCALE: 1"=30'



STEEL FRAMING PLAN  
SCALE: 1"=30'

SHEET 1 OF 8

**LOCATION NO. 1**  
**EXIST. BRIDGE PLANS**  
**UP RR OVER I-90/94 & CTA**  
**SN 016-0119**