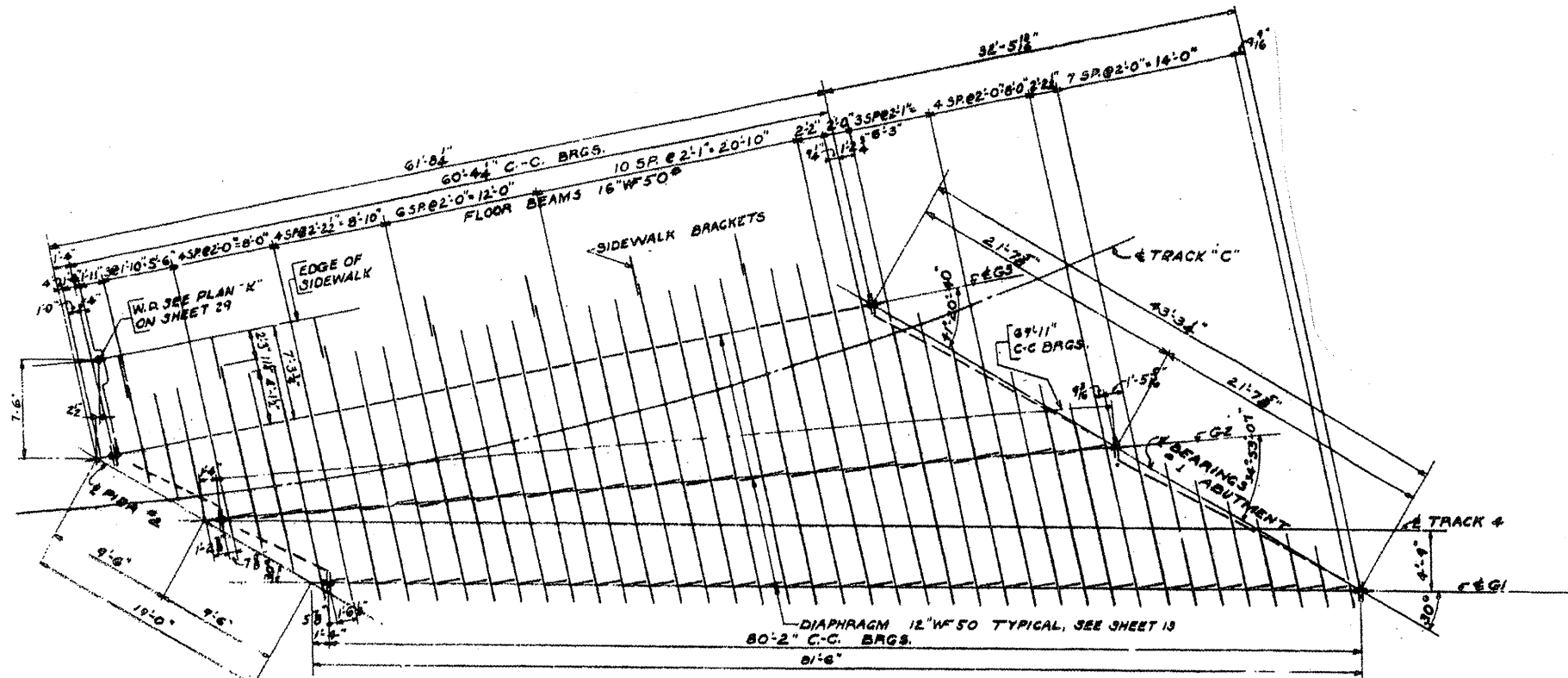
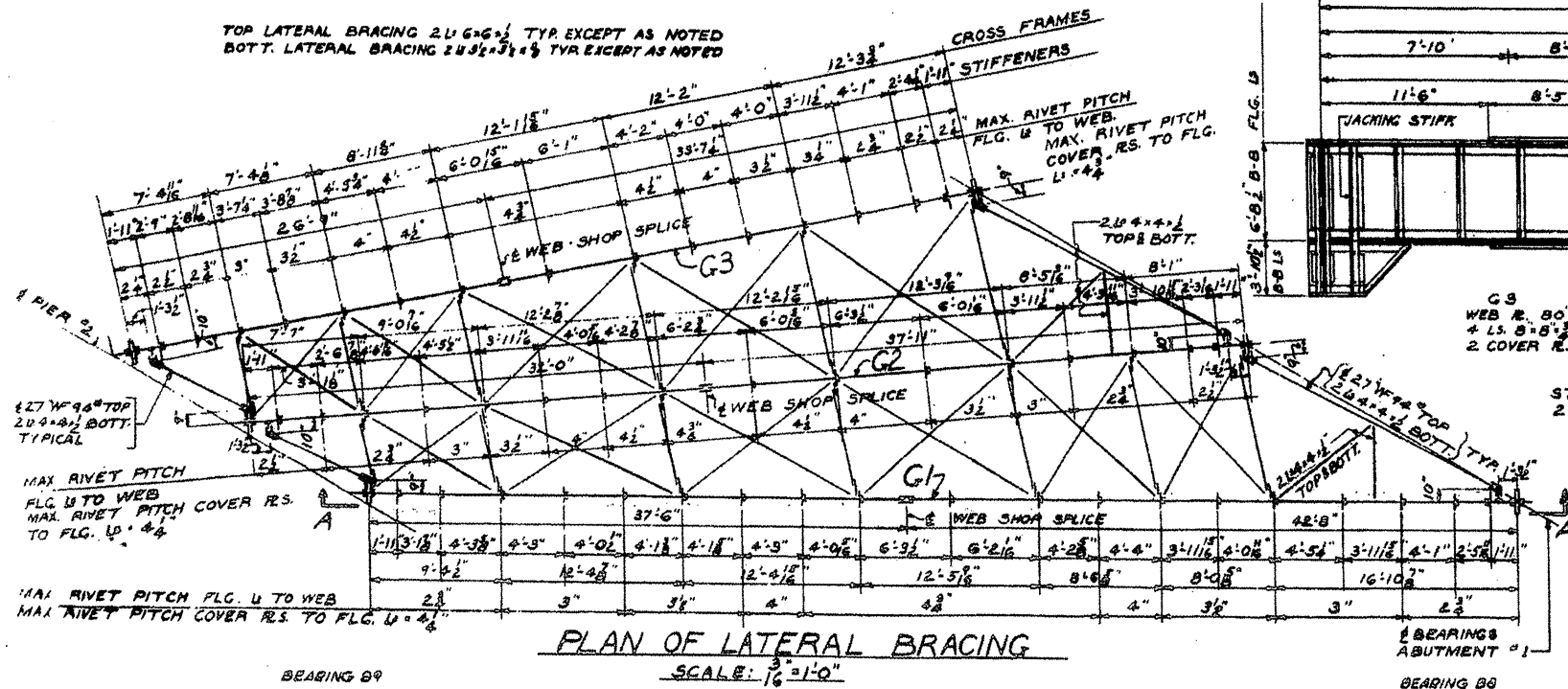


| ROUTE   | SECTION     | COUNTY | TOTAL SHEETS | SHEET NUMBER |
|---------|-------------|--------|--------------|--------------|
| VARIOUS | 2009-016 BP | COOK   | 32           | 11           |

CONTRACT NO. 60G14

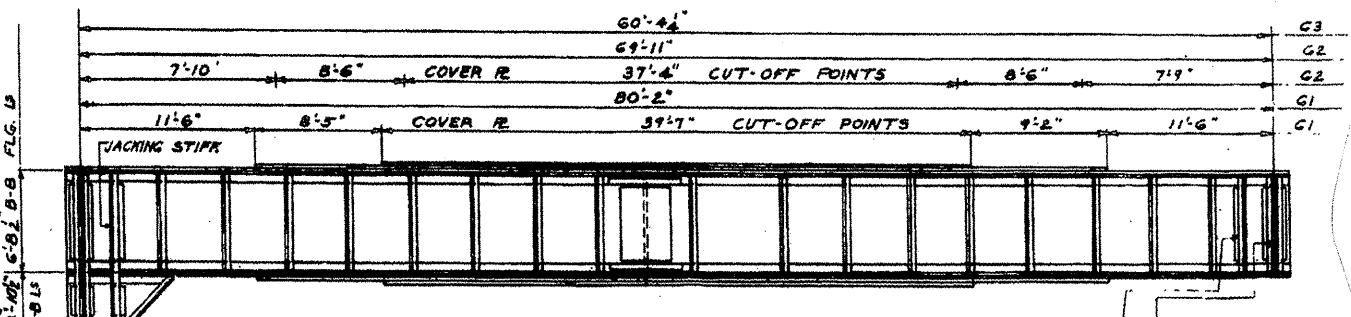


PLAN OF FLOOR BEAMS



PLAN OF LATERAL BRACING

SCALE: 3/16"=1'-0"



**G3**  
 WEB R. 80x7  
 4 LS. 8x8 3/8  
 2 COVER RS. 20x3/8

**G2**  
 WEB R. 80x7  
 4 LS. 8x8 3/8  
 4 COVER RS. 20x3/8  
 2 COVER RS. 20x3/8

**G1**  
 WEB R. 80x7  
 4 LS. 8x8 3/8  
 4 COVER RS. 20x3/8  
 2 COVER RS. 20x3/8

**JACKING STIFFS. TYP.**  
 2 L 4x7 1/2 F2E  
 2 FILL RS. 7x2 1/2

**END STIFFS. TYP.**  
 2 L 4x7 1/2 F2E  
 2 FILL RS. 15x2

**STIFFS. BETWEEN X-FRAMES**  
 2 L 4x6 3/8 CRIMPED

**STIFFS. @ X-FRAMES**  
 1 L 4x6 3/8 CRIMPED N.S.  
 1 L 4x6 3/8 RS.  
 1 FILL R. 4x2 F.S.

**ELEV. A-A**  
 GIRDER G1 SHOWN  
 GIRDERS G2 & G3 SIMILAR EXCEPT AS NOTED  
 SCALE: 3/16"=1'-0"

**LOCATION NO. 1**

**EXIST. BRIDGE PLANS**  
**UP RR OVER I-90/94 & CTA**  
**SN 016-0119**