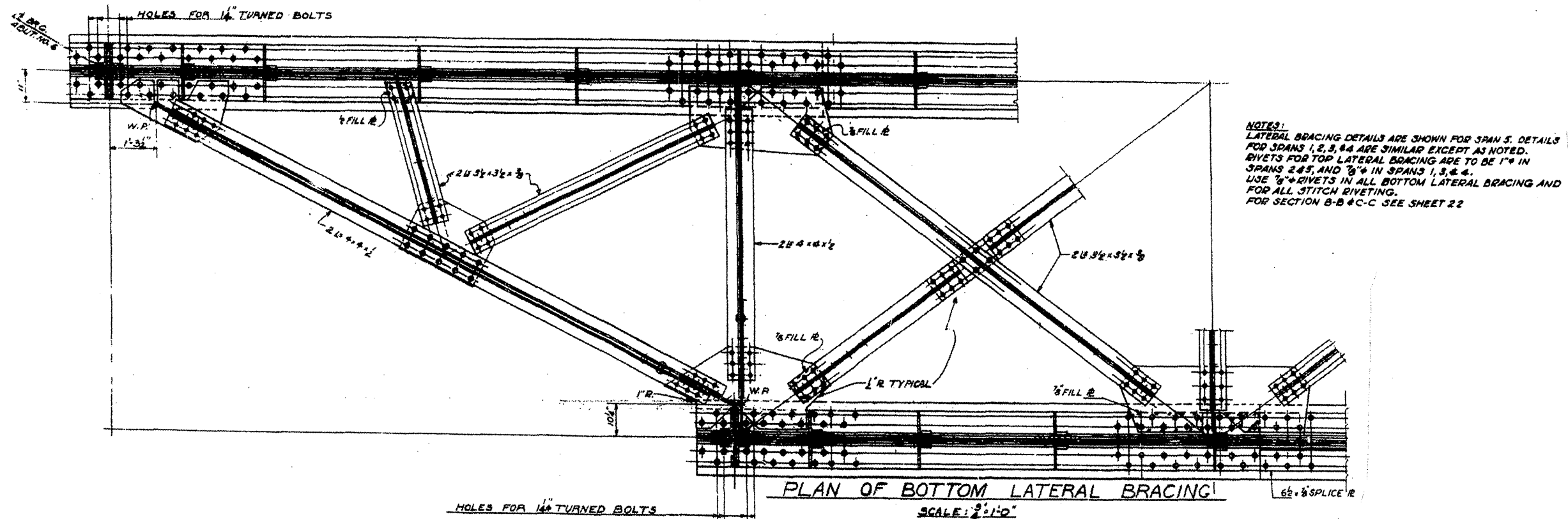
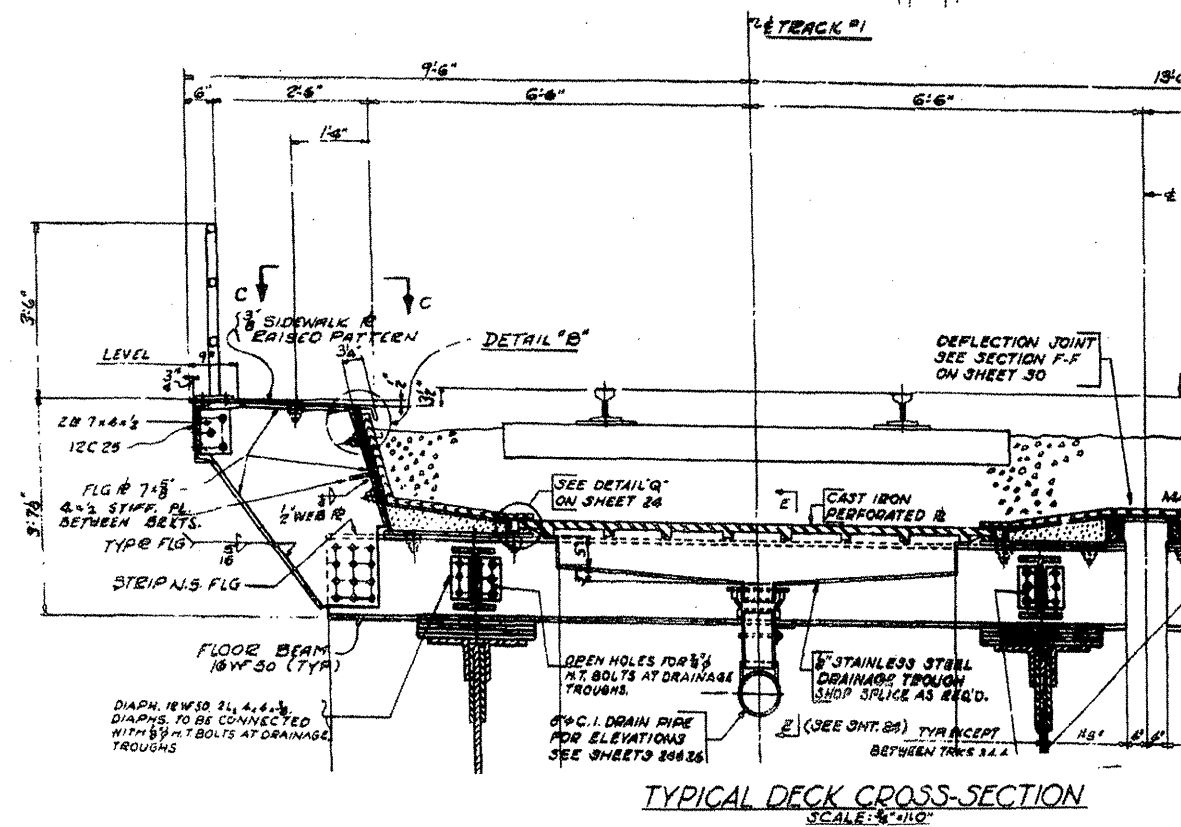


| ROUTE | SECTION | COUNTY | TOTAL SHEETS | SHEET NUMBER |
|---------|-------------|--------|--------------|--------------|
| VARIOUS | 2009-016 BP | COOK | 32 | 16 |

CONTRACT NO. 60G14



NOTES:
LATERAL BRACING DETAILS ARE SHOWN FOR SPAN 5. DETAILS FOR SPANS 1, 2, 3, & 4 ARE SIMILAR EXCEPT AS NOTED. RIVETS FOR TOP LATERAL BRACING ARE TO BE 1" IN SPANS 2 & 3, AND 3/4" IN SPANS 1, 3, & 4. USE 3/8" RIVETS IN ALL BOTTOM LATERAL BRACING AND FOR ALL STITCH RIVETING. FOR SECTION B-B & C-C SEE SHEET 22



LOCATION NO. 1
EXIST. BRIDGE PLANS
UP RR OVER I-90/94 & CTA
SN 016-0119