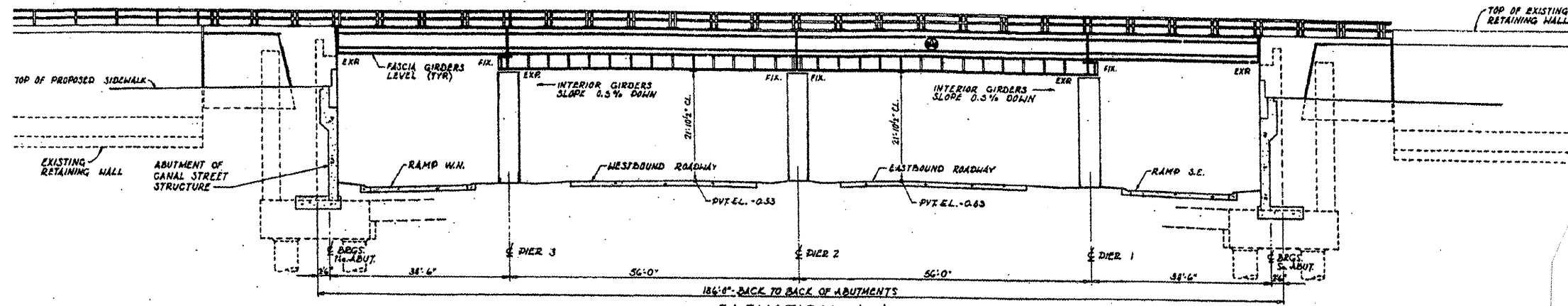
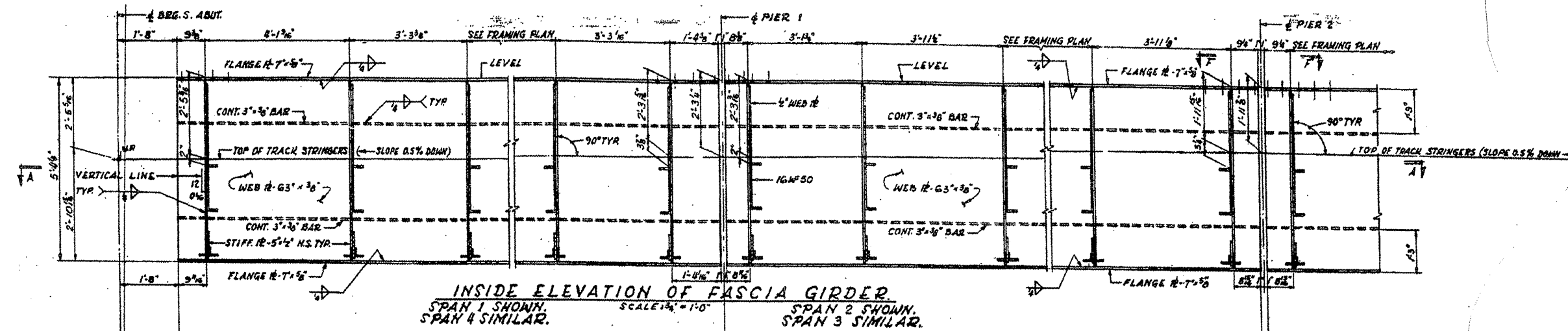


ROUTE VARIOUS	SECTION 2009-016 BP	COUNTY COOK	TOTAL SHEETS 32	SHEET NUMBER 19
------------------	------------------------	----------------	-----------------------	-----------------------

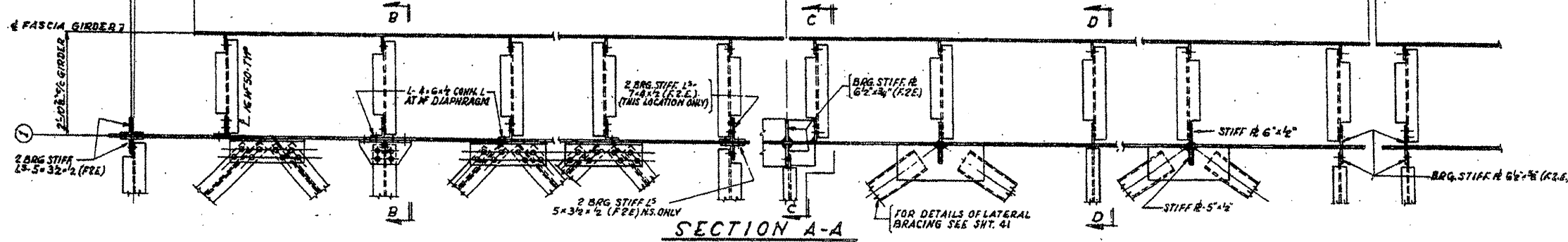
CONTRACT NO. 60G14



ELEVATION A-A (LOOKING EAST)
SCALE: 1"=10'



INSIDE ELEVATION OF FASCIA GIRDER
SPAN 1 SHOWN, SPAN 4 SIMILAR.
SCALE: 1/4"=1'-0"
SPAN 2 SHOWN, SPAN 3 SIMILAR.



SECTION A-A

LOCATION NO. 2
EXIST. BRIDGE PLANS
UP RR OVER I-55
SN 016-1137