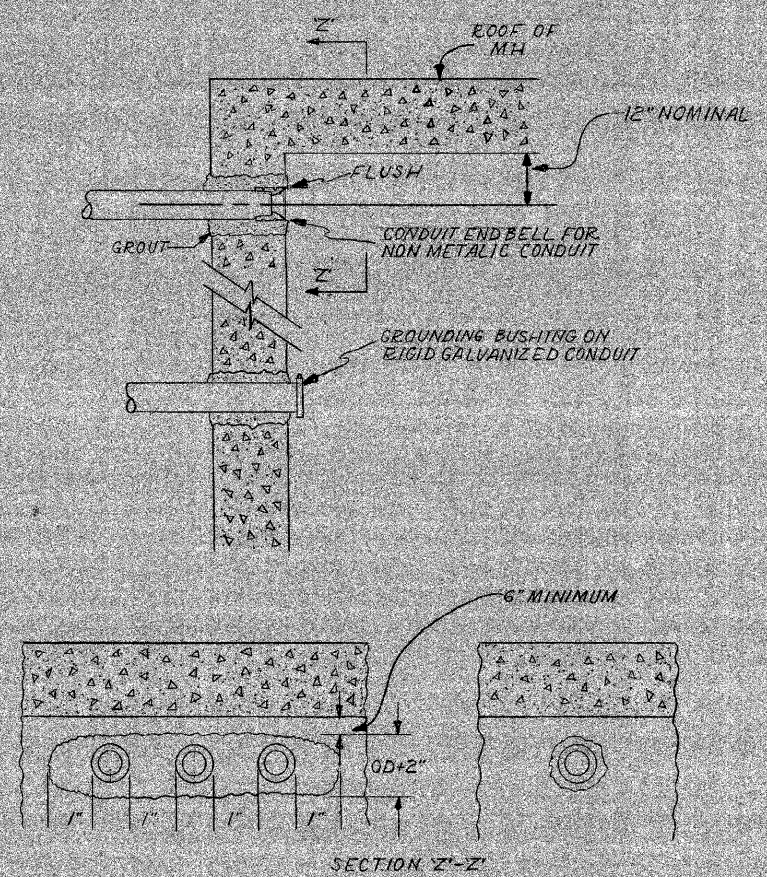


F.A.I. RTE.	SECTION	COUNTY	TOTAL SHEETS	SHEET NO.
57	1920.1B-R	COOK	101	043
STA.	TO STA.			
FED. ROAD DIST. NO. 1		ILLINOIS	FED. AID PROJECT	
CONTRACT NO. 62533				

CONDUIT INSTALLATION THROUGH EXISTING MANHOLE OR HANDHOLE WALL

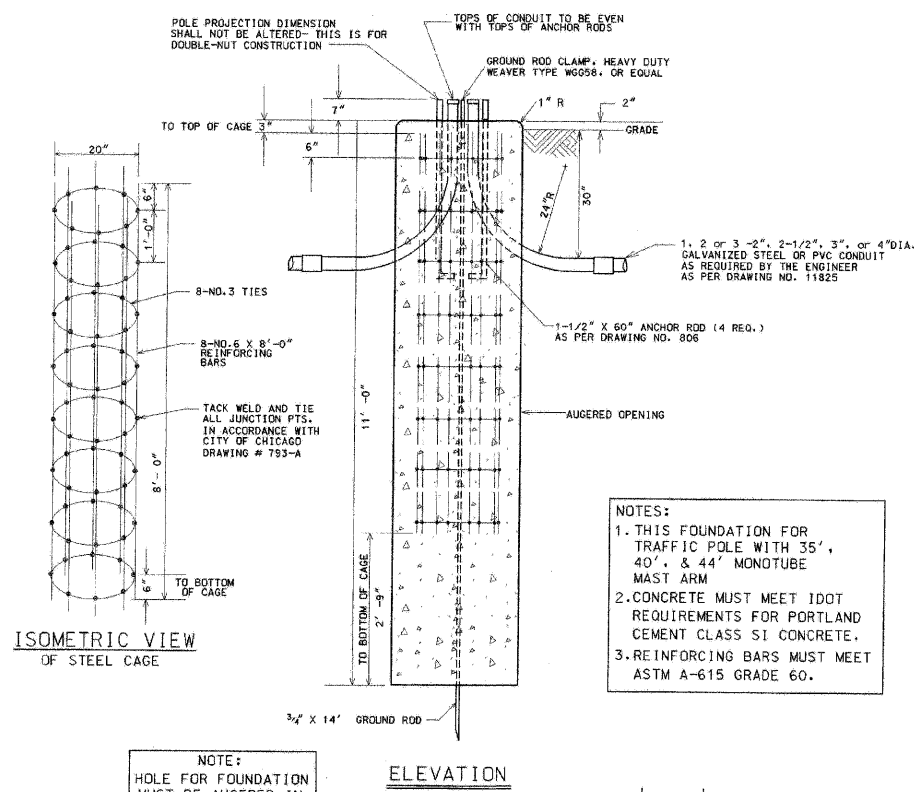
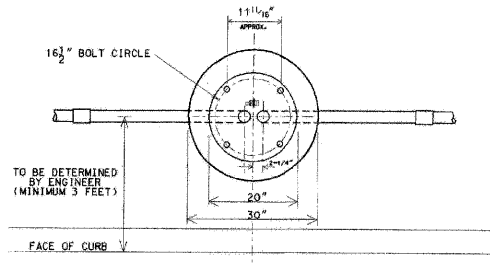


OPENING THROUGH WALL TO BE KEPT TO MINIMUM SIZE TO ADMIT CONDUIT AND SUFFICIENT GROUT TO ASSURE SEALING WALL.

INSTALLATION METHOD OF INSTALLING CONDUIT THRU MANHOLE WALL

CITY OF CHICAGO
DEPT. OF STREETS AND SANITATION
BUREAU OF ELECTRICITY
DIVISION OF ELECTRICAL ENGINEERING

DRAWN A.M. JOHNSON	CHECKED R. SICKOWSKI	ENGINEER R.L. MARTIN
 ENGINEER OF ELECTRICITY CHARLES E. BUCKLEY		DRS. NO. 814
DATE 8/2/02	SCALE N.P.	DATE 8/2/02



ISOMETRIC VIEW OF STEEL CAGE

ELEVATION

CODE	COMMODITY	SIZE	QUANTITY
05-3267-2940	REDI-MIX CONCRETE	CU. YD.	2.20
09-4001-	ELBOW, LARGE RADIUS	2", 2-1/2", 3", 4"	AS REQUIRED
37-8180-0200	ANCHOR ROD	1-1/2" X 60"	4
05-5054-6910	RE-BAR CAGE	20" R X 8'-0"	1
09-7795	GROUND ROD	3/4" X 14'-0"	1
09-2636-	GROUND ROD CLAMP	3/4"	1
09-2092-	GROUND BUSHING	2" x 1-1/2", 3", 4"	AS REQUIRED

- NOTES:
1. THIS FOUNDATION FOR TRAFFIC POLE WITH 35', 40', & 44' MONOTUBE MAST ARM
 2. CONCRETE MUST MEET IDOT REQUIREMENTS FOR PORTLAND CEMENT CLASS S1 CONCRETE.
 3. REINFORCING BARS MUST MEET ASTM A-615 GRADE 60.

8/21/02	SUPERCEDES DWG 4817 DRAWN 4/20/81
DATE	REVISION
FOUNDATION FOR 34'-6" TRAFFIC SIGNAL POLE WITH 16 1/2" BOLT CIRCLE	
CITY OF CHICAGO DEPT. OF STREETS AND SANITATION BUREAU OF ELECTRICITY DIVISION OF ELECTRICAL ENGINEERING	
DRAFTSMAN S. GARNSEY	DIRECTOR S. GARNSEY
ELECTRICAL ENGINEER R. CARTER	ENGINEER S. GARNSEY
DATE 8/2/02	DRAWING NO. 817
SCALE NONE	DATE 8/2/02

REVISIONS	
NAME	DATE

ILLINOIS DEPARTMENT OF TRANSPORTATION
112TH PLACE OVER
F.A.I. ROUTE 57 (INTERSTATE 57)
ELECTRICAL STANDARD DETAILS

SCALE: NONE
DATE: 01/16/09
DRAWN BY: N/A
CHECKED BY: N/A

TENG
TENG & ASSOCIATES, INC.
ENGINEERS/ARCHITECTS-PLANNERS
205 N. MICHIGAN AVE., CHICAGO, IL 60601
TELEPHONE: 312/616-0000

*112TH ST BORDER.DGN
 116-2009-1.DWG
 1 2 3 4 5 6 7 8 9 10 11 12 13 14 15 16 17 18 19 20 21 22 23 24 25 26 27 28 29 30 31 32 33 34 35 36 37 38 39 40 41 42 43 44 45 46 47 48 49 50 51 52 53 54 55 56 57 58 59 60 61 62 63
 HECHTER
 T:\DOCUMENT\930860\CIVIL\DWG\EH0509.DGN