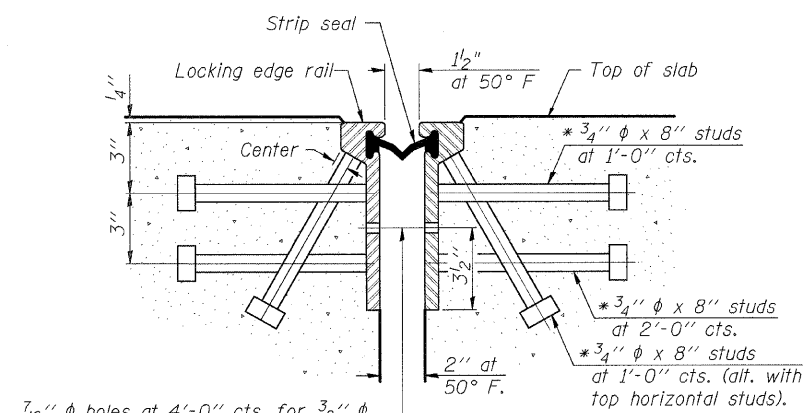


* Granular or solid flux filled headed studs conforming to Article 1006.32 of the Std. Specs., automatically end welded.

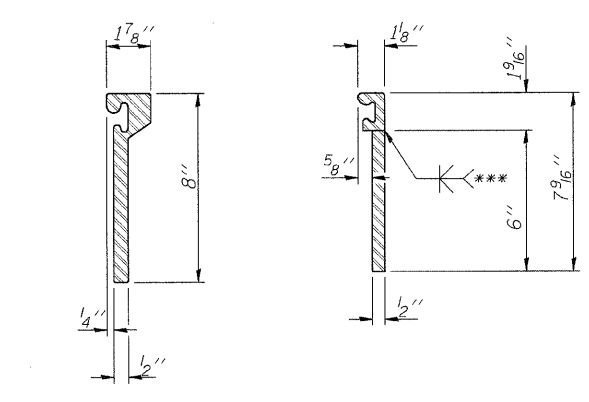
F.A.I. RTE.	SECTION	COUNTY	TOTAL SHEETS	SHEET NO.
57	1920.1B-R	COOK	101	075
STA.		TO STA.		
FED. ROAD DIST. NO. 1		ILLINOIS	FED. AID PROJECT	
CONTRACT NO. 62533				



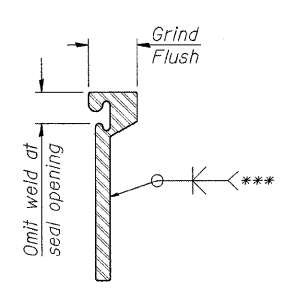
$\frac{7}{16}$ " ϕ holes at 4'-0" cts. for $\frac{3}{8}$ " ϕ bolts. All bolts shall be burned, sawed, or chipped off flush with the plates after forms are removed, typ.

$\frac{1}{2}$ " at 50° F.
* $\frac{3}{4}$ " ϕ x 8" studs at 1'-0" cts.
* $\frac{3}{4}$ " ϕ x 8" studs at 2'-0" cts.
* $\frac{3}{4}$ " ϕ x 8" studs at 1'-0" cts. (alt. with top horizontal studs).

SECTION THRU ROLLED RAIL JOINT



ROLLED EXTRUDED RAIL WELDED RAIL

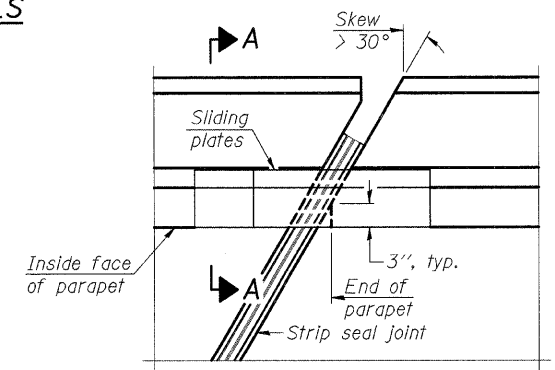


***Back gouge not required if complete joint penetration is verified by mock-up.

LOCKING EDGE RAIL SPLICE

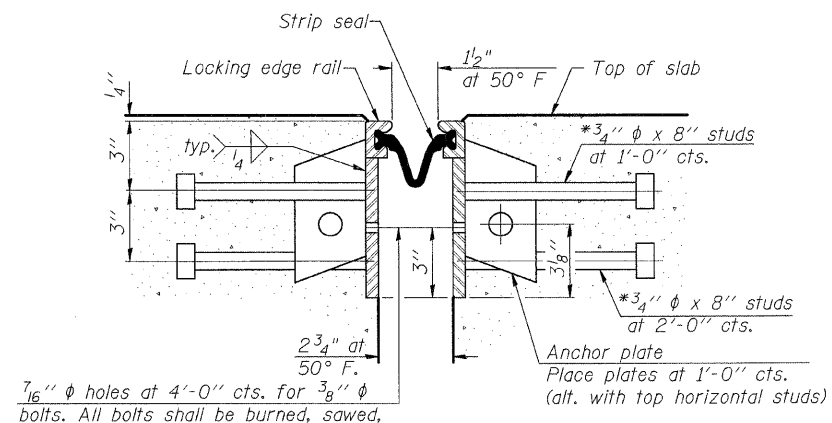
The inside of the locking edge rail groove shall be free of weld residue.

LOCKING EDGE RAILS



PLAN

POINT BLOCK DETAILS (for skews > 30°)

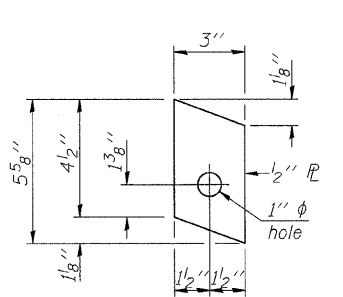


$\frac{7}{16}$ " ϕ holes at 4'-0" cts. for $\frac{3}{8}$ " ϕ bolts. All bolts shall be burned, sawed, or chipped off flush with the plates after forms are removed, typ.

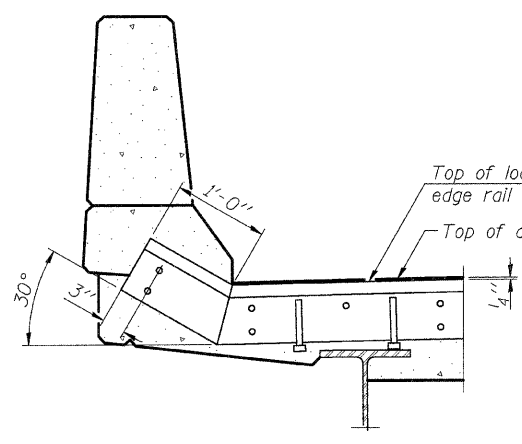
Anchor plate
Place plates at 1'-0" cts.
(alt. with top horizontal studs)

2 3/4" at 50° F.
* $\frac{3}{4}$ " ϕ x 8" studs at 1'-0" cts.
* $\frac{3}{4}$ " ϕ x 8" studs at 2'-0" cts.

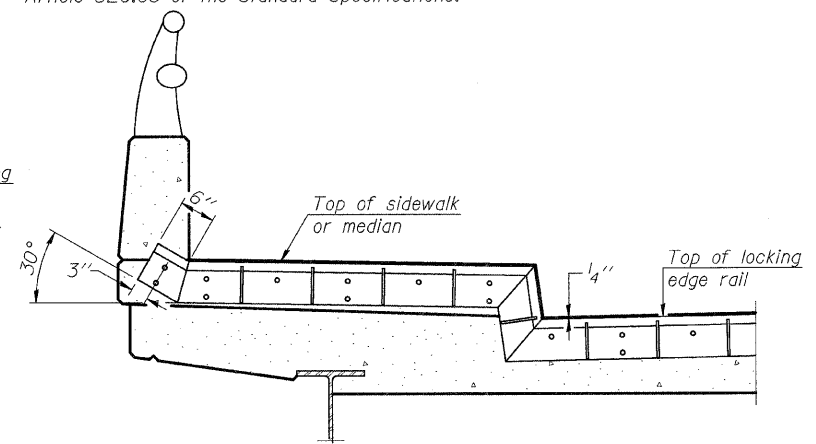
SECTION THRU WELDED RAIL JOINT



ANCHOR PLATE (for welded rail)



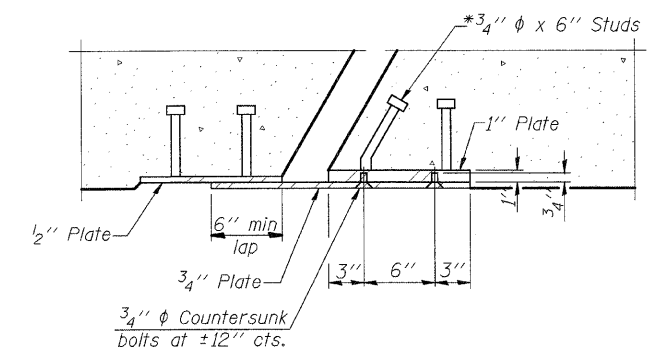
AT PARAPET



AT SIDEWALK OR MEDIAN

Shorter plates with a single row of studs at 12" cts. may be necessary on medians which are shallower than 9". See manufacturer's recommendation.

TYPICAL END TREATMENTS



SECTION B-B

BILL OF MATERIAL

Item	Unit	Total
Preformed Joint Strip Seal	Foot	171

SHT. S-009

REVISIONS	NAME	DATE

ILLINOIS DEPARTMENT OF TRANSPORTATION
F.A.I. ROUTE 57 (INTERSTATE 57)
112TH PLACE BRIDGE DECK REPLACEMENT
112th PLACE OVER I-57
SN 016-0988 STA. 546+15.56
COOK COUNTY

PREFORMED JOINT STRIP SEAL

DATE: 01/16/09
DRAWN BY: TMH
CHECKED BY: JLR



TENG & ASSOCIATES, INC.
ENGINEERS/ARCHITECTS/PLANNERS
205 N. MICHIGAN AVE. CHICAGO, IL 60601
TELEPHONE: 312.616.0000

N:\PROJECTS\04...1487008\01\UT\JOIN...RITCHELL
 11-16-2005 10:08:30
 color: F:\STANDARD\TENG\DATA\COLORTABLE.TBL
 pen: T081: 1/4"

EJ-SSJ

10-1-08