

STATE OF ILLINOIS  
DEPARTMENT OF TRANSPORTATION  
DIVISION OF HIGHWAYS

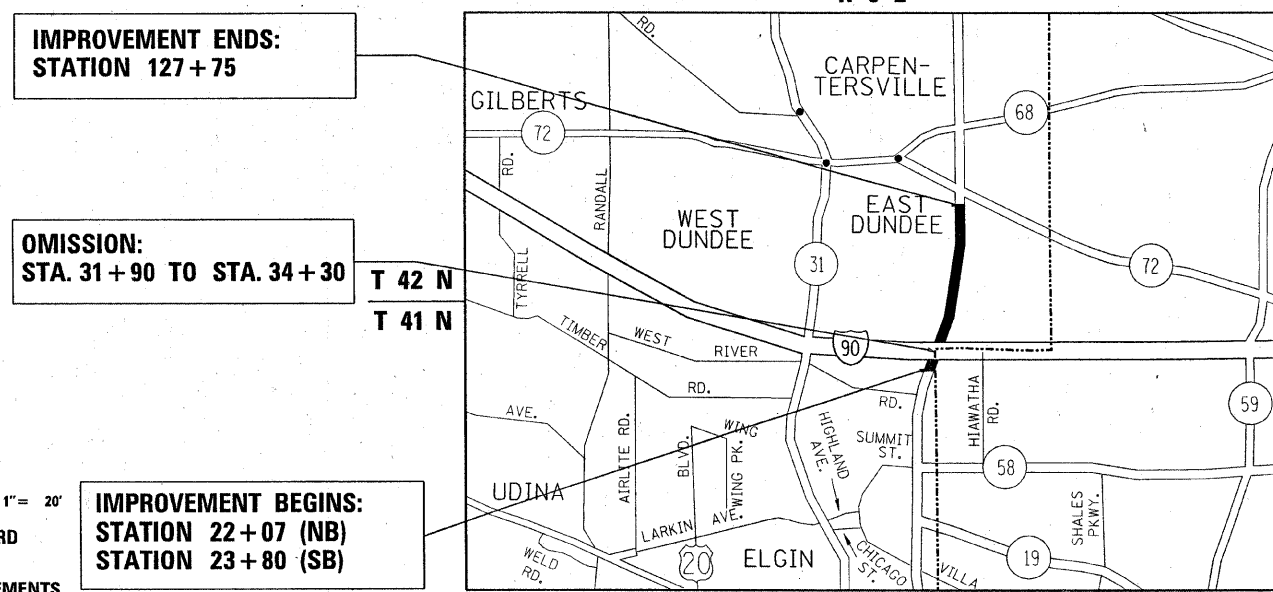
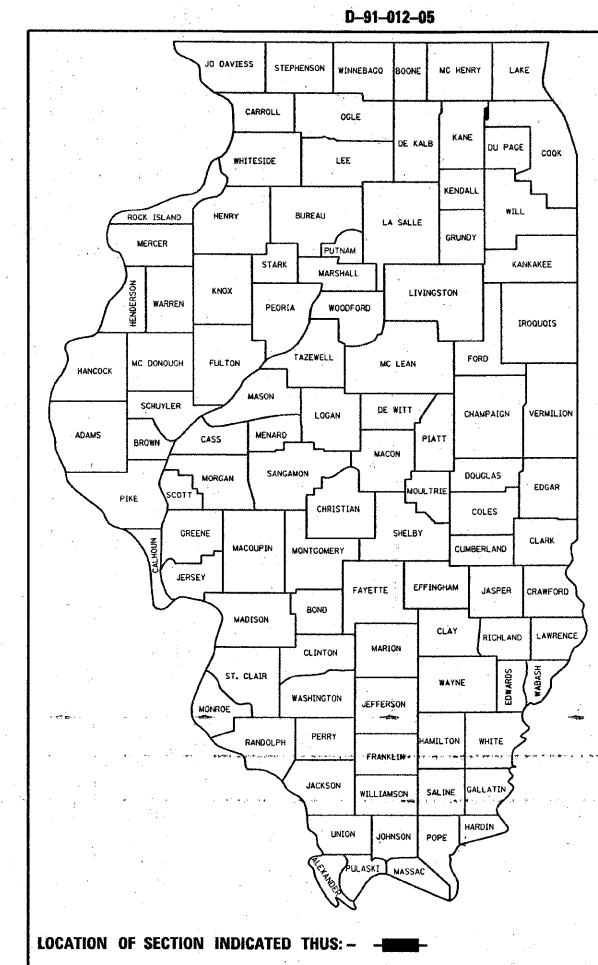
**PROPOSED  
HIGHWAY PLANS**

F.A.P. ROUTE 360: ILL 25 (DUNDEE AVE.)  
SECTION: (54 & 56) RS-6  
I-90 (NORTHWEST TOLLWAY) TO IL. 72 (HIGGINS RD.)  
S.N.: 045-0042  
RESURFACING (MAINTENANCE)  
KANE AND COOK COUNTIES  
C-91-012-05  
PROJECT: ESP-0360(010)

F.A.P. RTE.	SECTION	COUNTY	TOTAL SHEETS	SHEET NO.
360	(54&56) RS-6	KANE/COOK	37	1
ILLINOIS CONTRACT NO. 62847				

FOR INDEX OF SHEETS, SEE SHEET NO. 2

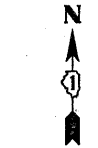
IMPROVEMENT IS LOCATED IN THE VILLAGE OF EAST DUNDEE AND THE CITY OF ELGIN



IMPROVEMENT ENDS:  
STATION 127+75

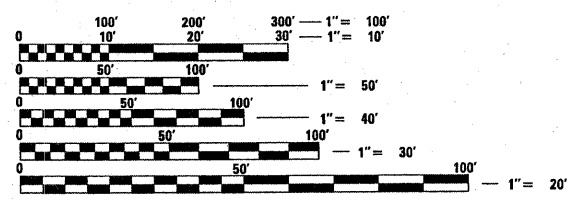
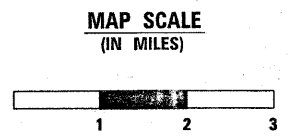
OMISSION:  
STA. 31+90 TO STA. 34+30

IMPROVEMENT BEGINS:  
STATION 22+07 (NB)  
STATION 23+80 (SB)



TRAFFIC DATA  
2007 ADT = 22,300  
POSTED SPEED LIMIT = 30-45 MPH

T 42 N  
T 41 N



FULL SIZE PLANS HAVE BEEN PREPARED USING STANDARD ENGINEERING SCALES. REDUCED SIZED PLANS WILL NOT CONFORM TO STANDARD SCALES. IN MAKING MEASUREMENTS ON REDUCED PLANS, THE ABOVE SCALES MAY BE USED.

J.U.L.I.E.  
JOINT UTILITY LOCATION INFORMATION FOR EXCAVATION  
1-800-892-0123  
OR 811

PROJECT ENGINEER: Ken Eng (847) 705-4247  
PROJECT MANAGER: Dan Wilgreen (847) 705-4240

NET LENGTH OF IMPROVEMENT = 10,240 LINEAL FEET = 1.95 MILES  
GROSS LENGTH OF IMPROVEMENT = 10,480 LINEAL FEET = 2.0 MILES

CONTRACT NO. 62847

STATE OF ILLINOIS  
DEPARTMENT OF TRANSPORTATION  
DIVISION OF HIGHWAYS

SUBMITTED JANUARY 30, 2009

Diana M. O'Keefe  
DEPUTY DIRECTOR OF HIGHWAYS, REGION ENGINEER

March 27, 2009  
Charles J. Ingersoll  
ENGINEER OF DESIGN AND ENVIRONMENT

March 27, 2009  
Christine M. Reed  
DIRECTOR OF HIGHWAYS, CHIEF ENGINEER

**PRINTED BY THE AUTHORITY  
OF THE STATE OF ILLINOIS**