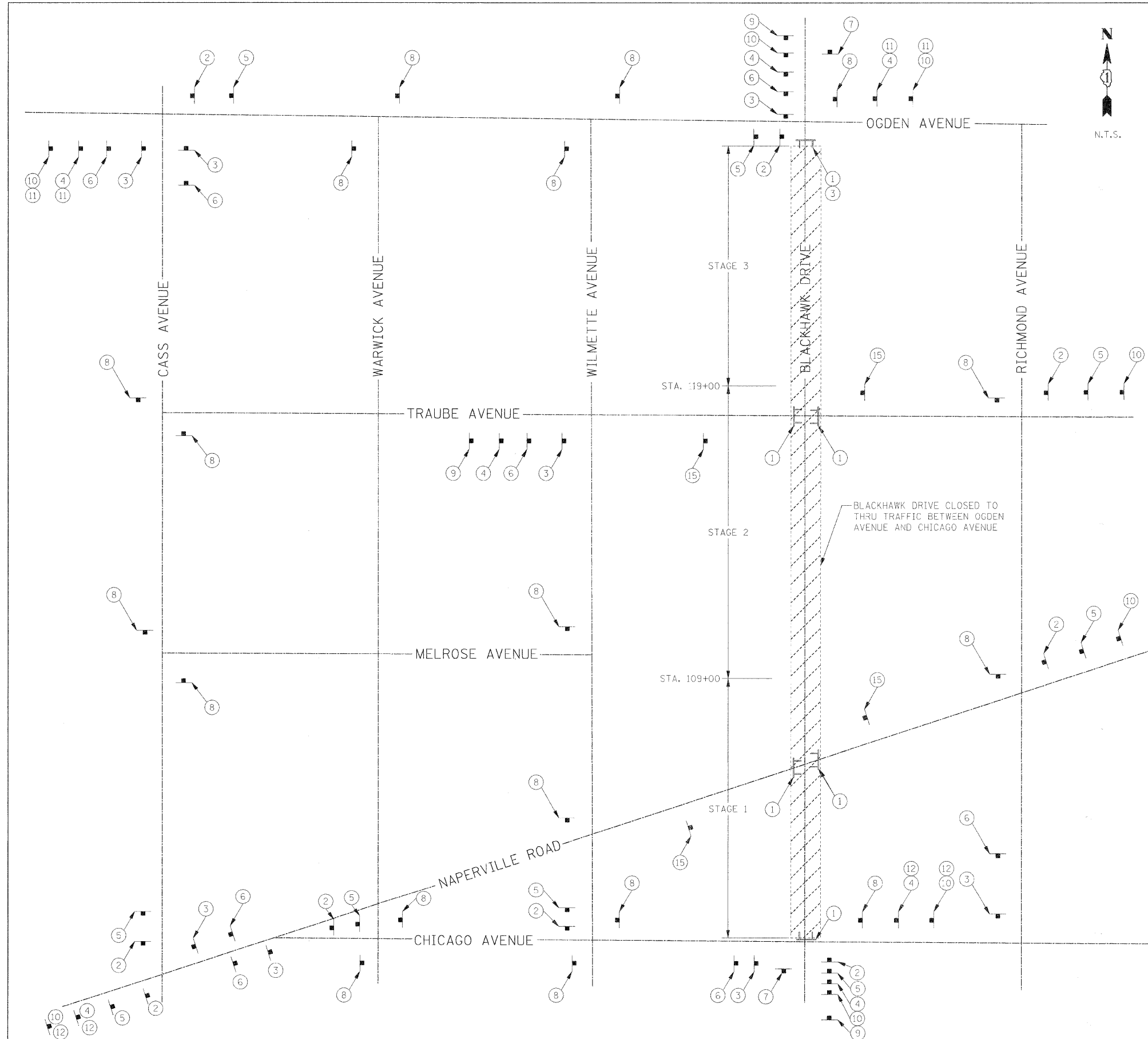
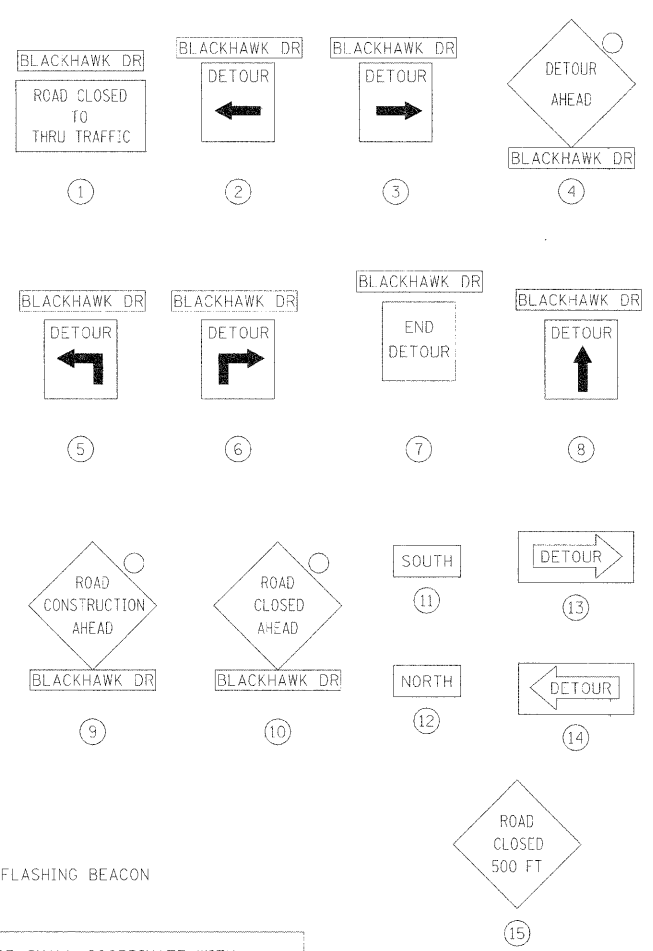


| | | |
|------|----------------|------|
| PLAN | SURVEYED | DATE |
| | PLOTTED | BY |
| | NOTE CHECKED | |
| | REVISIONS | |
| | CADD FILE NAME | |
| | NO. | |

| | | |
|---------|--------------------------|------|
| PROFILE | SURVEYED | DATE |
| | PLOTTED | BY |
| | NOTE CHECKED | |
| | REVISIONS | |
| | STRUCTURE NOTATIONS OKWD | |
| | NO. | |



DETOUR SIGN LEGEND



LEGEND:

○ AMBER FLASHING BEACON

CONTRACTOR SHALL COORDINATE WITH THE ENGINEER, THE VILLAGE OF WESTMONT, AND THE ILLINOIS DEPARTMENT OF TRANSPORTATION FOR SIGNAGE NECESSARY ON OGDEN AVENUE.

CONTRACTOR SHALL COORDINATE WITH THE VILLAGE OF CLARENDON HILLS PUBLIC WORKS, 630-286-4750, FOR SIGN PLACEMENT EAST OF RICHMOND AVENUE ON TRAUBE AVENUE AND NAPERVILLE ROAD.

NOTES:

- ALL DETOUR SIGNS SHALL BE IN ORANGE COLOR BACKGROUND WITH BLACK LETTERS.
- CONTRACTOR SHALL FOLLOW LATEST MUTCD MANUAL AND IDOT STANDARDS FOR DETOUR SIGNS AND MAINTENANCE OF TRAFFIC SIGNS.
- THE COST OF THE DETOUR SIGNING SHALL BE INCLUDED IN THE COST OF TRAFFIC CONTROL AND PROTECTION FOR TEMPORARY DETOUR.
- CONTRACTOR SHALL COORDINATE ALL DETOUR SIGNS WITH ADJACENT CONSTRUCTION CONTRACTS.
- DETOUR SIGNAGE SHALL BE COORDINATED WITH IDOT, VILLAGE OF WESTMONT AND VILLAGE OF CLARENDON HILLS.
- DETOUR SIGNAGE SHALL BE IN PLACE THROUGHOUT CONSTRUCTION.

| | | | | | | | | | | |
|----------------------|----------------------|-----------------|-----------|---|---|-----------------------------|--------------------|------------------|--------------|-----------|
| FILE NAME = #FTI-FL* | USER NAME = #USER* | DESIGNED - JAB | REVISED - | STATE OF ILLINOIS DEPARTMENT OF TRANSPORTATION | MAINTENANCE OF TRAFFIC DETOUR PLAN | F.A.U. RTE. | SECTION | COUNTY | TOTAL SHEETS | SHEET NO. |
| | PLOT SCALE = #SCALE* | DRAWN - JAB | REVISED - | | | 3003 | 00-00084-00-PV | DUPAGE | 112 | 17 |
| | PLOT DATE = #DATE* | CHECKED - JMT | REVISED - | | | BLACKHAWK DR RECONSTRUCTION | CONTRACT NO. 63121 | | | |
| | | DATE - 01/02/09 | REVISED - | | | FED. ROAD DIST. NO. 1 | ILLINOIS | FED. AID PROJECT | | |
| SCALE: NONE | | | | | | SHEET NO. 1 OF 1 SHEETS | | STA. | TO STA. | |