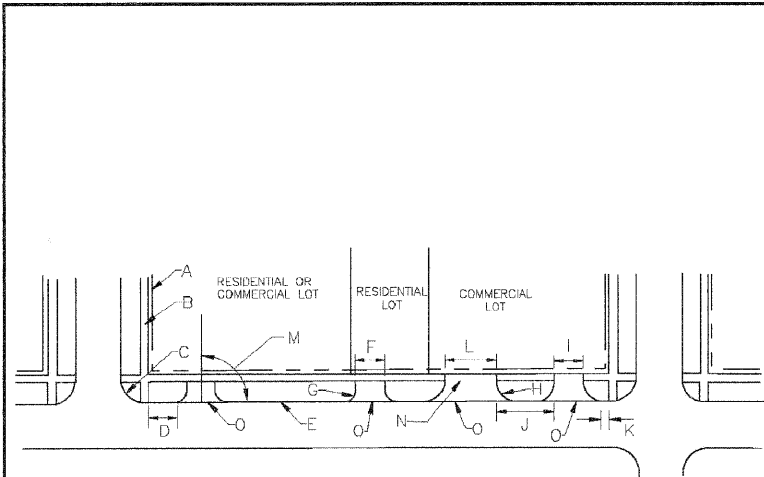


PLAN	DATE
BY	
CHECKED	
DATE	
NO.	



- CONSTRUCTION NOTES**
- RIGHT-OF-WAY LINE
  - SIDEWALK
  - 25' RADIUS TYPICAL
  - 30' MIN. FROM PROPERTY LINE (NEAR SIDE)
  - CURB LINE
  - 22" MAX., 9" MIN.
  - 5' RADIUS OR 3' FLARE
  - 15' MIN., 50' MAX. RADIUS
  - ONE-WAY DRIVEWAY, SEE NOTE 2
  - 30' MIN.
  - 20' MIN. FROM PROPERTY LINE (FOR SIDE)
  - TWO-WAY DRIVEWAY, SEE NOTES 3 AND 4
  - MIN. 75'
  - IF DRIVEWAY HAS CURBING, SIDEWALK SHALL BE ELIMINATED ACROSS DRIVEWAY, CURBS DEPRESSED ON EACH SIDE OF SIDEWALK, AND HANDICAPPED RAMPS INSTALLED AT THE POINTS.
  - DEPRESSED CURB

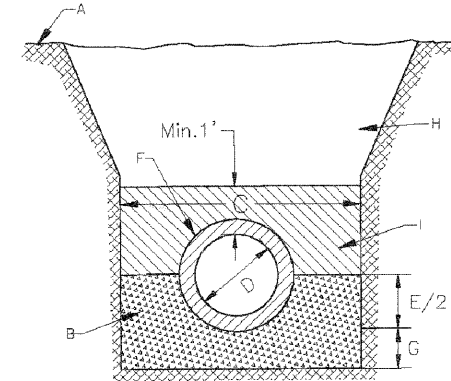
- GENERAL NOTES**
- DRIVEWAY APRON MUST BE PAVED WITH ASPHALT OR CONCRETE.
  - ONE LANE DRIVEWAYS FOR COMMERCIAL PROPERTY SHALL BE A MAX. OF 18' WIDE, EDGE TO EDGE OR CURB FACE-TO-CURB FACE.
  - TWO LANE DRIVEWAYS FOR COMMERCIAL PROPERTY SHALL BE A MAX. OF 30' WIDE, EDGE-TO-EDGE OR CURB FACE-TO-CURB FACE.
  - THREE LANE DRIVEWAYS FOR COMMERCIAL PROPERTY SHALL BE A MAX. OF 40' WIDE, EDGE-TO-EDGE OR CURB FACE-TO-CURBFACE.

VILLAGE OF WESTMONT  
STANDARD DETAIL  
FOR  
CURB CUTS

DATE: APRIL, 2008  
DWG R-5-0

ISSUED: March 1988  
REVISED: April 7, 2008

I:\WMTV\GENERAL\Standards\dwgs\CURB CUTS.dwg



INSIDE PIPE DIAMETER	MINIMUM TRENCH WIDTH (C)	MAXIMUM TRENCH WIDTH (C)
6	18	24
8	20	24
10	22	24
12	25	30
14	26	36
15	30	36
16	33	36
18	35	40
21	39	44
24	44	48
27	48	54
30	54	60
33	59	66
36	64	72

(ALL DIMENSIONS ARE IN INCHES)

ISSUED: March 1988  
REVISED: April 7, 2008

- CONSTRUCTION NOTES**
- EXISTING GROUND OR PAVEMENT SUBGRADE
  - CRUSHED STONE OR GRAVEL BEDDING (CA-6 THRU CA-13)
  - TRENCH WIDTH AT TOP OF PIPE
  - INSIDE DIAMETER OF PIPE
  - PIPE, SEE NOTES 1 AND 2
  - 4" MIN.
  - BACKFILL, SEE NOTE 3
  - WHEN PVC PIPE USED, BEDDING MATERIAL: OTHERWISE, SAME AS "H"

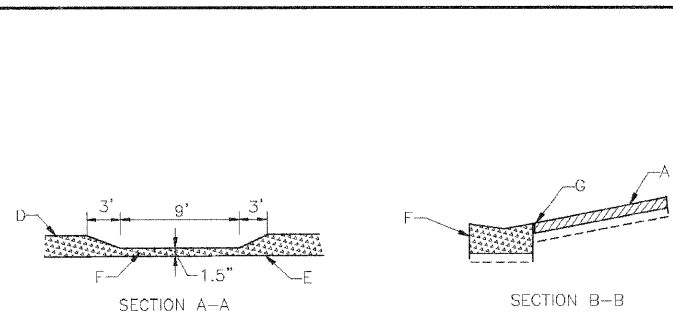
- GENERAL NOTES**
- FOR STORM SEWERS, REINFORCED CONCRETE PIPE OR DUCTILE IRON PIPE SHALL NORMALLY BE USED. POLYVINYL CHLORIDE PIPE MAY BE USED WHEN INSTALLED UNDER LANDSCAPED AREAS, OR UNDER PAVEMENTS WHEN DEPTH OF COVER IS A MINIMUM OF 3 FEET, EXCEPT THAT BEDDING MATERIAL SHALL BE PLACED A MIN. OF 1 FOOT OVER THE PIPE. CORRUGATED METAL PIPE MAY BE USED FOR DRIVEWAY CULVERTS.
  - FOR WATERLINES, POLYVINYL CHLORIDE PRESSURE PIPE (JOHNS-MANVILLE "BLUE BRUTE" OR APPROVED EQUAL) SHALL BE USED.
  - IN LANDSCAPED AREAS, NORMAL BACKFILL MAY BE USED. IF INDICATED ON THE PLANS OR INSTRUCTED BY THE VILLAGE'S ENGINEER, NORMAL BACKFILL SHALL BE JETTED IN PLACE.

VILLAGE OF WESTMONT  
STANDARD DETAIL  
FOR  
TRENCH

DATE: APRIL, 2008  
DWG D-1-0

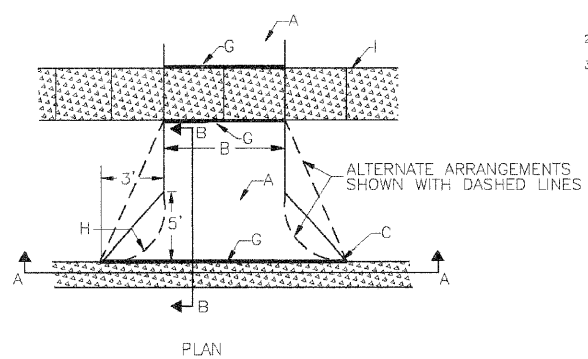
I:\WMTV\GENERAL\Standards\dwgs\TRENCH.dwg

PROFILE	DATE
BY	
CHECKED	
DATE	
NO.	



- CONSTRUCTION NOTES**
- FOR CONCRETE DRIVEWAYS, MIN. 5" P.C.C. OVER A MIN. 2" AGGREGATE BASE. FOR ASPHALT DRIVEWAYS, MIN. 2" HOT-MIX ASPHALT OVER A MIN. 6" AGGREGATE BASE.
  - MIN. WIDTH 9', MAX. 22'
  - CURB AND GUTTER
  - TOP OF CURB
  - FLOW LINE OF GUTTER
  - DEPRESSED TYPE CURB & GUTTER
  - 3/4" EXPANSION JOINT REQUIRED FOR CONCRETE DRIVEWAYS ONLY
  - 5' RADIUS
  - P.C.C. SIDEWALK, SEE NOTE 2.

- GENERAL NOTES**
- FOR CONCRETE DRIVEWAYS WIDER THAN 14', A CONTRACTION JOINT SHALL BE LOCATED ALONG THE CENTERLINE OF THE DRIVEWAY.
  - SIDEWALK SHALL BE A MINIMUM OF 5" THICK.
  - 8-BAG MIX CONCRETE SHALL BE USED FOR CONCRETE DRIVEWAYS, SIDEWALKS, AND CURB AND GUTTER.

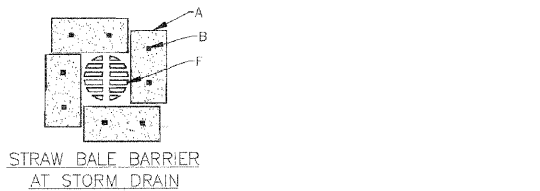
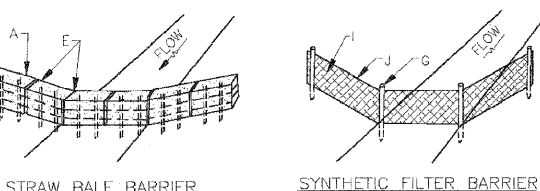
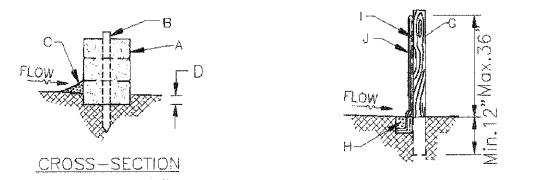


VILLAGE OF WESTMONT  
STANDARD DETAIL  
FOR  
RESIDENTIAL DRIVEWAY

DATE: APRIL, 2008  
DWG R-7-0

ISSUED: March 1988  
REVISED: April 7, 2008

I:\WMTV\GENERAL\Standards\dwgs\DRIVEWAY.dwg



- CONSTRUCTION NOTES**
- STRAW BALES, SEE NOTE 2
  - 2"x2" HARDWOOD STAKES OR REBARS, 3' LONG
  - COMPACTED BACKFILL
  - 4" MIN. DEPTH TRENCH
  - PACKED STRAW
  - STORM GRATE W/FILTER FABRIC BETWEEN FRAME AND LID
  - 4" DIA. WOOD OR 1.33 LB/IF STEEL POST, MIN. 5' LONG, MAX. 10' SPACING
  - 4"x4" TRENCH, BACKFILLED WITH COMPACTED SOIL
  - WIRE MESH FENCING, SEE NOTE 3
  - SYNTHETIC FILTER FABRIC

- GENERAL NOTES**
- FOR FILTER BARRIER CONSIDERATIONS, THE DRAINAGE AREA SHALL BE LIMITED TO 1/2 ACRE, EXCEPT FOR INDIVIDUAL LOTS WHERE 1 ACRE IS ACCEPTABLE.
  - STRAW BALES SHALL BE PLACED IN A SINGLE ROW AND STAKED WITH MIN. 2 STAKES PER BALE. GAPS BETWEEN BALES SHALL BE CHINKED WITH STRAW. BALES SHALL BE EMBEDDED 4" INTO THE SURFACE OF THE SOIL.
  - WHEN USING STANDARD STRENGTH FILTER CLOTH AS THE FILTER BARRIER, WIRE FENCING REINFORCEMENT IS REQUIRED OF A MIN. 42" IN HEIGHT, MIN. 14 GAUGE, HAVING A MAX. MESH SPACING OF 6", AND EXTENDING INTO THE TRENCH A MIN. OF 2". WHEN EXTRA STRENGTH CLOTH OR CLOSER POST SPACING (6" OR LESS) ARE USED, THE WIRE SUPPORT FENCE MAY BE ELIMINATED, AND THE FABRIC ATTACHED DIRECTLY TO THE POSTS.
  - OTHER ACCEPTABLE EROSION CONTROL MEASURES ARE THE USE OF OF BERMS, SEDIMENT BASINS, FIBER MATS, NETTING, ETC., AS APPROVED BY THE VILLAGE.
  - EROSION CONTROL MEASURES SHALL BE CONTINUOUSLY MAINTAINED UNTIL PERMANENT EROSION CONTROL FEATURE ARE COMPLETED.
  - IF AFTER REPEATED FAILURES ON THE PART OF THE CONTRACTOR TO PROPERLY CONTROL EROSION, POLLUTION, AND/OR SILTATION, THE VILLAGE RESERVES THE RIGHT TO EFFECT NECESSARY CORRECTIVE MEASURES AND CHARGE ANY COSTS TO THE CONTRACTOR.

VILLAGE OF WESTMONT  
STANDARD DETAIL  
FOR  
SOIL EROSION CONTROL

DATE: APRIL, 2008  
DWG D-12-0

ISSUED: March 1988  
REVISED: April 7, 2008

I:\WMTV\GENERAL\Standards\dwgs\SOIL.dwg

FILE NAME =	USER NAME = #USER#	DESIGNED - JMI	REVISED -
#FILE#		DRAWN - JMT	REVISED -
	PLOT SCALE = #SCALE#	CHECKED - JAB	REVISED -
	PLOT DATE = #DATE#	DATE - 01/02/09	REVISED -

STATE OF ILLINOIS  
DEPARTMENT OF TRANSPORTATION

CONSTRUCTION DETAILS

SCALE: NONE SHEET NO. 1 OF 2 SHEETS STA. TO STA.

F.A.U. RTE.	SECTION	COUNTY	TOTAL SHEETS	SHEET NO.
3003	00-00084-00-PV	DUPAGE	112	37
BLACKHAWK DR RECONSTRUCTION			CONTRACT NO. 63121	
FED. ROAD DIST. NO. 1 ILLINOIS FED. AID PROJECT				