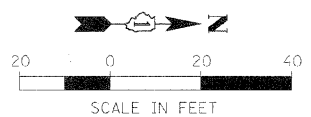
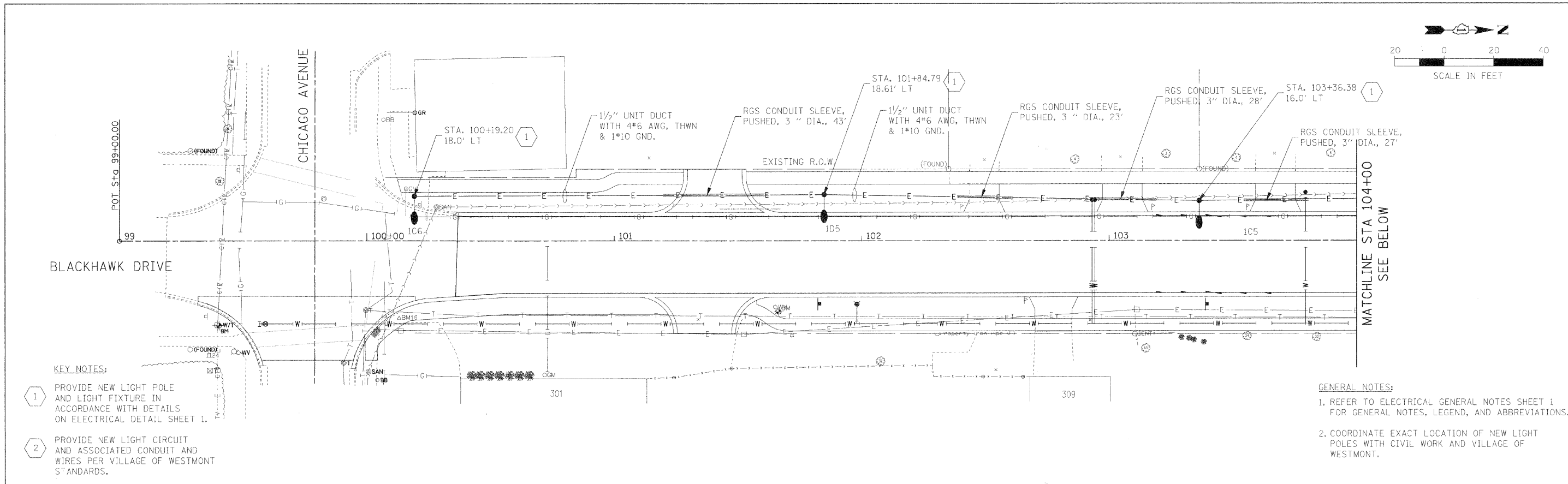


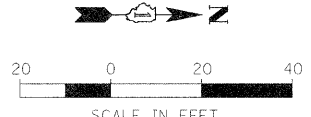
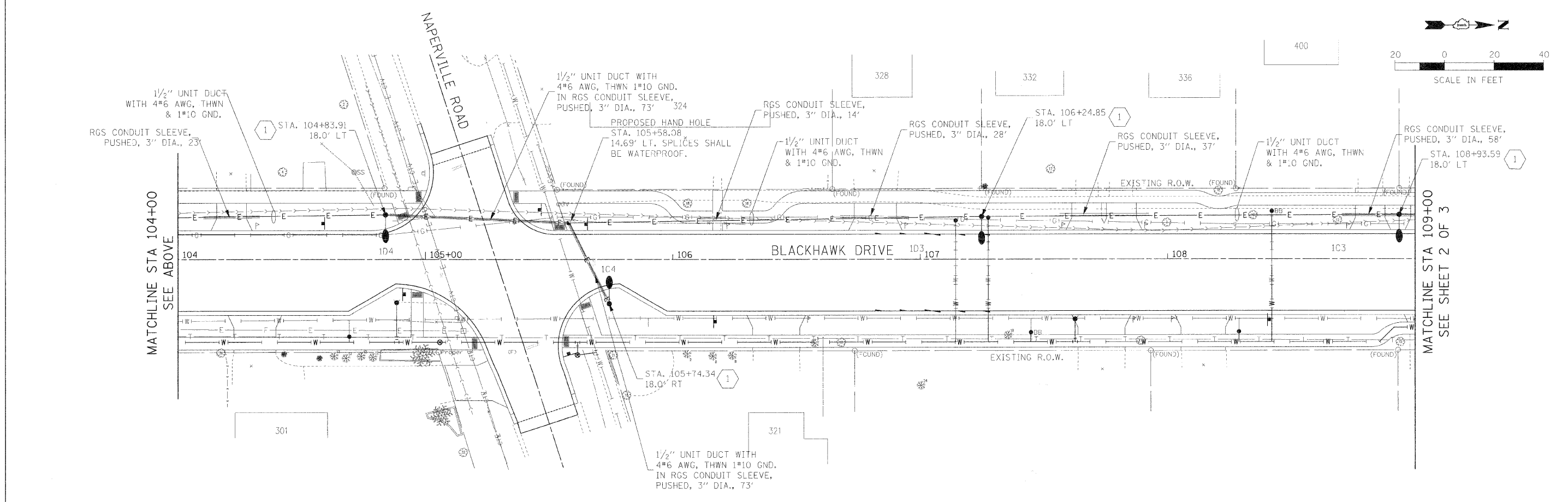
PLAN	DESIGNED	DATE
	DRAWN	
	CHECKED	
	IN CHARGE	
	PROJECT	
	NO.	

PROFILE	DESIGNED	DATE
	DRAWN	
	CHECKED	
	IN CHARGE	
	PROJECT	
	NO.	



- KEY NOTES:**
- 1 PROVIDE NEW LIGHT POLE AND LIGHT FIXTURE IN ACCORDANCE WITH DETAILS ON ELECTRICAL DETAIL SHEET 1.
 - 2 PROVIDE NEW LIGHT CIRCUIT AND ASSOCIATED CONDUIT AND WIRES PER VILLAGE OF WESTMONT STANDARDS.

- GENERAL NOTES:**
- 1. REFER TO ELECTRICAL GENERAL NOTES SHEET 1 FOR GENERAL NOTES, LEGEND, AND ABBREVIATIONS.
 - 2. COORDINATE EXACT LOCATION OF NEW LIGHT POLES WITH CIVIL WORK AND VILLAGE OF WESTMONT.



FILE NAME =	USER NAME = #USER#	DESIGNED - FEI	REVISED -	STATE OF ILLINOIS DEPARTMENT OF TRANSPORTATION	PROPOSED LIGHTING PLAN	F.A.U. RTE.	SECTION	COUNTY	TOTAL SHEETS	SHEET NO.	
#FILE_#	DRAWN - TMC	CHECKED - MAR	REVISED -			3003	00-00084-00-PV	DUPAGE	112	65	
PLOT SCALE = #SCALE#	DATE - 01/02/09	REVISOR -	REVISIONS -			BLACKHAWK DR RECONSTRUCTION	CONTRACT NO. 63121				
PLOT DATE = #DATE#						FED. ROAD DIST. NO. 1 ILLINOIS FED. AID PROJECT					
						SCALE: 1:20 SHEET NO. 1 OF 3 SHEETS STA. 99+00.00 TO STA. 109+00.00					