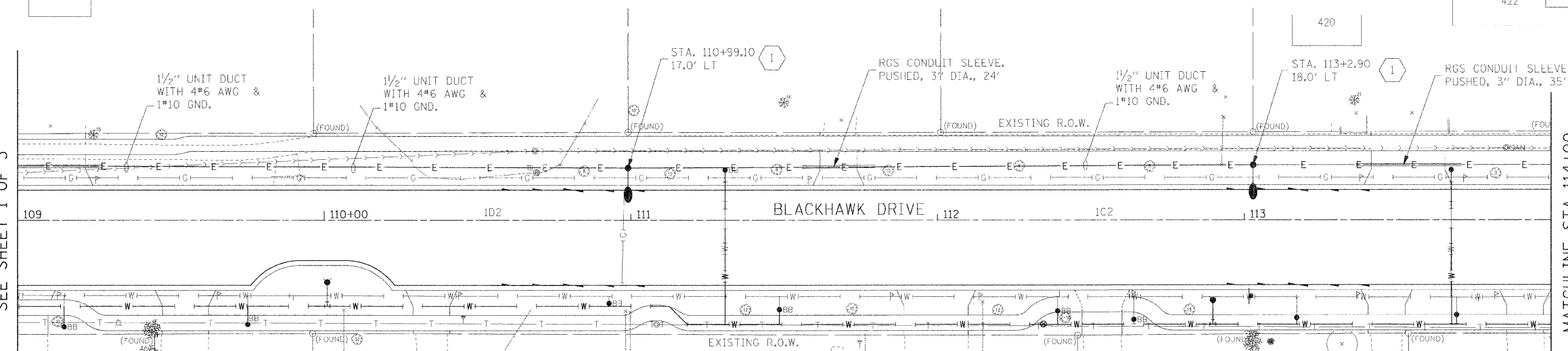


MATCHLINE STA 109+00
SEE SHEET 1 OF 3

MATCHLINE STA 114+00
SEE BELOW



KEY NOTES:

- 1 PROVIDE NEW LIGHT POLE AND LIGHT FIXTURE IN ACCORDANCE WITH DETAILS ON ELECTRICAL DETAIL SHEET 1.
- 2 PROVIDE NEW LIGHT CIRCUIT AND ASSOCIATED CONDUIT AND WIRES PER VILLAGE OF WESTMONT STANDARDS.

GENERAL NOTES:

- 1. REFER TO ELECTRICAL GENERAL NOTES SHEET 1 FOR GENERAL NOTES, LEGEND, AND ABBREVIATIONS.
- 2. COORDINATE EXACT LOCATION OF NEW LIGHT POLES WITH CIVIL WORK AND VILLAGE OF WESTMONT.

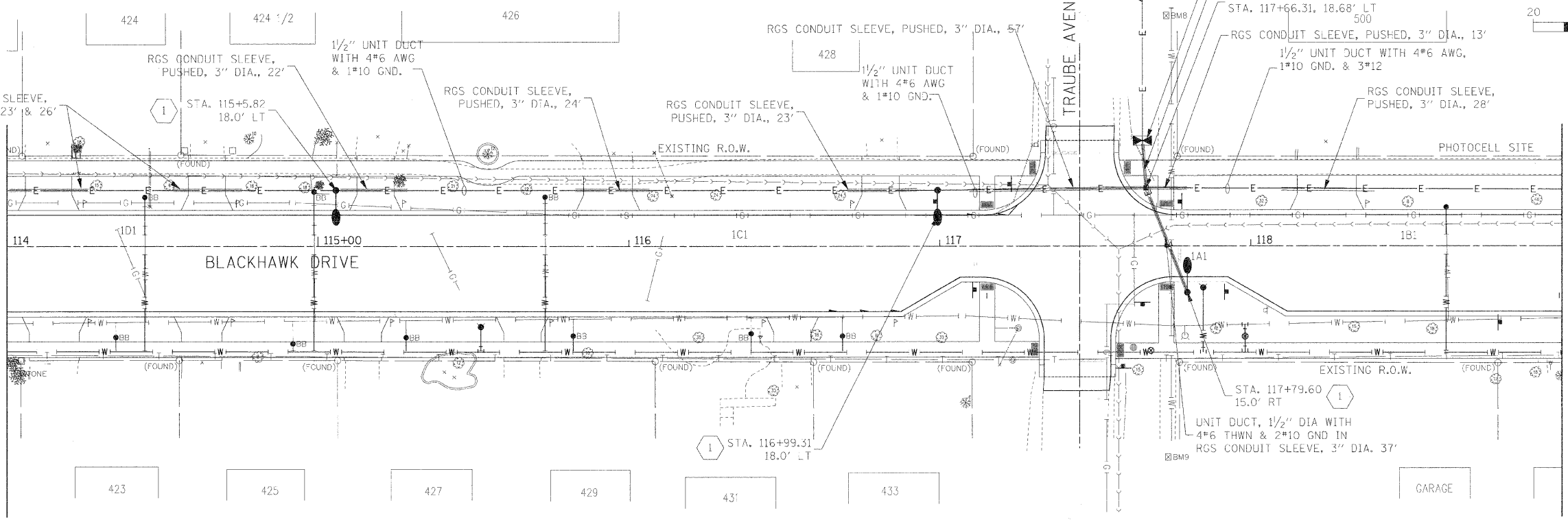
DATE	
BY	
REVISIONS	
PLAN	
NO.	
DATE	
BY	
REVISIONS	
PROFILE	
NO.	
DATE	
BY	
REVISIONS	

SERVICE FED FROM POLE MOUNTED TRANSFORMER APPROXIMATELY 450 FEET AWAY. CONTRACTOR SHALL FIELD VERIFY EXACT LOCATION OF POWER POLE AND TRANSFORMER AS WELL AS EXACT LOCATIONS WHERE PAVEMENT REQUIRES CONDUIT TO BE PUSHED.



MATCHLINE STA 114+00
SEE ABOVE

MATCHLINE STA 119+00
SEE SHEET 3 OF 3



DATE	
BY	
REVISIONS	
PROFILE	
NO.	
DATE	
BY	
REVISIONS	

FILE NAME =	USER NAME = #USER#	DESIGNED - FE1	REVISED -	STATE OF ILLINOIS DEPARTMENT OF TRANSPORTATION	PROPOSED LIGHTING PLAN	F.A.U. R.T.E.	SECTION	COUNTY	TOTAL SHEETS	SHEET NO.	
*FILE_#		DRAWN - TMC	REVISED -			3003	00-00084-00-PV	DUPAGE	112	66	
		CHECKED - MAR	REVISED -			BLACKHAWK DR RECONSTRUCTION		CONTRACT NO. 63121			
		DATE - 01/02/09	REVISED -			SCALE: 1:20		SHEET NO. 2 OF 3 SHEETS		STA. 109+00.00 TO STA. 119+00.00	