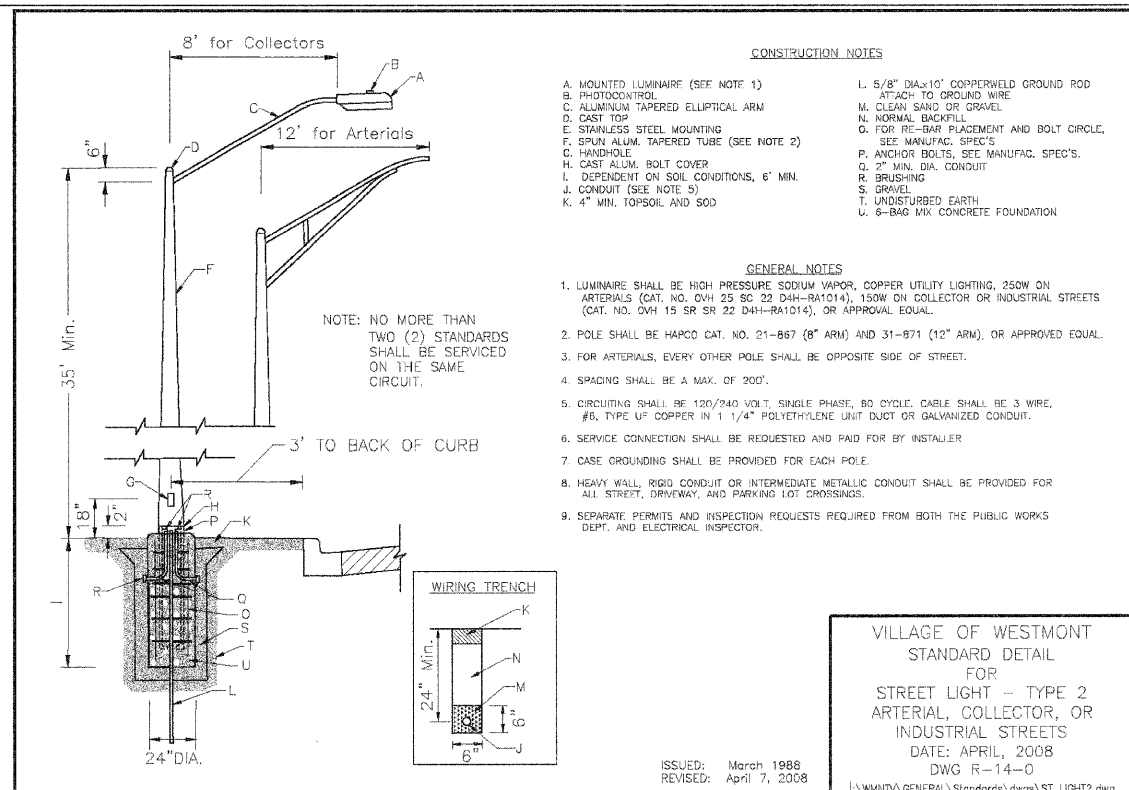


PLAN	DATE
DESIGNED	BY
CHECKED	BY
DATE	
NO.	

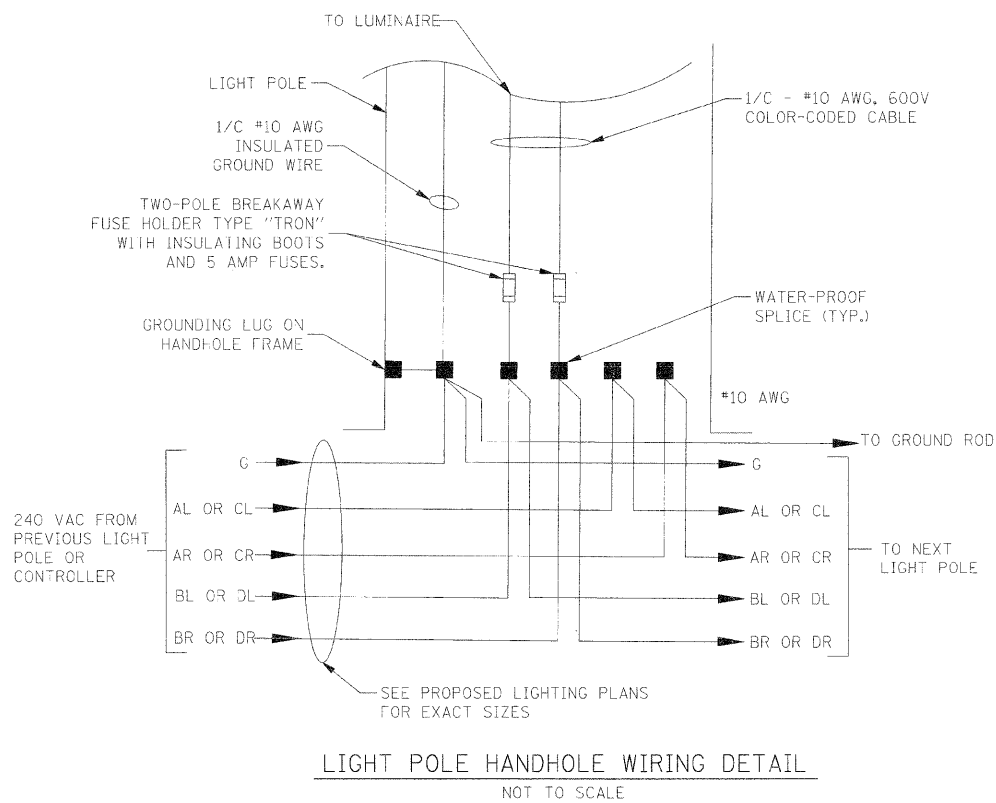
PROFILE	DATE
DESIGNED	BY
CHECKED	BY
DATE	
NO.	



- CONSTRUCTION NOTES**
- A. MOUNTED LUMINAIRE (SEE NOTE 1)
  - B. PHOTOCONTROL
  - C. ALUMINUM TAPERED ELLIPTICAL ARM
  - D. CAST TOP
  - E. STAINLESS STEEL MOUNTING
  - F. SPUN ALUM. TAPERED TUBE (SEE NOTE 2)
  - G. HANDLE
  - H. CAST ALUM. BOLT COVER
  - I. DEPENDENT ON SOIL CONDITIONS, 6' MIN.
  - J. CONDUIT (SEE NOTE 5)
  - K. 4" MIN. TOPSOIL AND SOD
  - L. 5/8" DIA. x 10' COPPERWELD GROUND ROD
  - M. ATTACH TO GROUND WIRE
  - N. CLEAN SAND OR GRAVEL
  - O. NORMAL BACKFILL
  - P. FOR RE-BAR PLACEMENT AND BOLT CIRCLE, SEE MANUFAC. SPEC'S.
  - Q. SEE MANUFAC. SPEC'S.
  - R. ANCHOR BOLTS, SEE MANUFAC. SPEC'S.
  - S. 2" MIN. DIA. CONDUIT
  - T. BRUSHING
  - U. DRIVEL
  - V. UNDISTURBED EARTH
  - W. 6-BAG MIX CONCRETE FOUNDATION

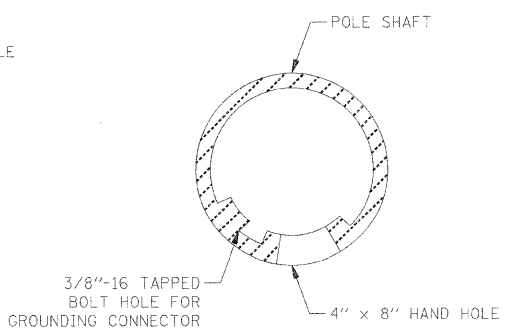
- GENERAL NOTES**
1. LUMINAIRE SHALL BE HIGH PRESSURE SODIUM VAPOR, COPPER UTILITY LIGHTING, 250W ON ARTERIALS (CAT. NO. OVH 25 SC 22 D4H-RA1014), 150W ON COLLECTOR OR INDUSTRIAL STREETS (CAT. NO. OVH 15 SR SR 22 D4H-RA1014), OR APPROVAL EQUAL.
  2. POLE SHALL BE HAPCO CAT. NO. 21-867 (8" ARM) AND 31-B71 (12" ARM), OR APPROVED EQUAL.
  3. FOR ARTERIALS, EVERY OTHER POLE SHALL BE OPPOSITE SIDE OF STREET.
  4. SPACING SHALL BE A MAX. OF 200'.
  5. CIRCUITING SHALL BE 120/240 VOLT, SINGLE PHASE, 60 CYCLE. CABLE SHALL BE 3 WIRE, #6, TYPE UF COPPER IN 1 1/4" POLYETHYLENE UNIDUCT OR GALVANIZED CONDUIT.
  6. SERVICE CONNECTION SHALL BE REQUESTED AND PAID FOR BY INSTALLER.
  7. CASE GROUNDING SHALL BE PROVIDED FOR EACH POLE.
  8. HEAVY WALL, RIGID CONDUIT OR INTERMEDIATE METALLIC CONDUIT SHALL BE PROVIDED FOR ALL STREET, DRIVEWAY, AND PARKING LOT CROSSINGS.
  9. SEPARATE PERMITS AND INSPECTION REQUESTS REQUIRED FROM BOTH THE PUBLIC WORKS DEPT. AND ELECTRICAL INSPECTOR.

VILLAGE OF WESTMONT  
STANDARD DETAIL  
FOR  
STREET LIGHT - TYPE 2  
ARTERIAL, COLLECTOR, OR  
INDUSTRIAL STREETS  
DATE: APRIL, 2008  
DWG R-14-0  
ISSUED: March 1988  
REVISED: April 7, 2008

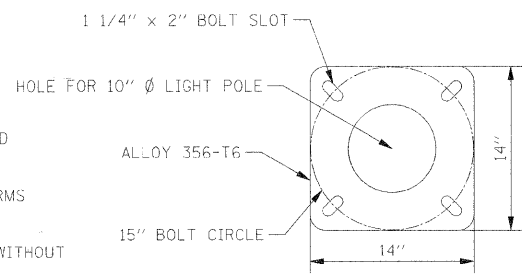


**LIGHT POLE HANDHOLE WIRING DETAIL**  
NOT TO SCALE

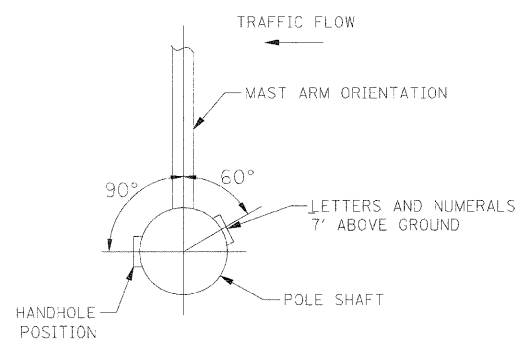
- NOTES:**
1. THE INSTALLING CONTRACTOR SHALL PROVIDE A UL LISTED GROUNDING CONNECTOR.
  2. LIGHT POLES SHALL NOT BE INSTALLED WITHOUT MAST ARMS AND LUMINAIRES.
  3. LIGHT POLES SHALL BE SET PLUMB ON THE FOUNDATION WITHOUT THE USE OF LEVELING NUTS, WASHERS, OR SHIMS.
  4. LIGHTING UNIT IDENTIFICATION NUMBERS SHALL BE INSTALLED BEFORE THE LIGHTING UNIT IS ENERGIZED.
  5. LIGHT POLES SHALL BE FED FROM ALTERNATING CIRCUITS. SEE LINE DIAGRAM ON ELECTRICAL DETAIL SHEET 3 FOR CIRCUIT ASSIGNMENTS.
  6. LIGHT POLES SHALL BE INSTALLED ON HELIX FOUNDATIONS. A SEPARATE GROUND ROD SHALL BE INSTALLED FOR EACH LIGHT POLE.



**HANDHOLE DETAIL**  
NOT TO SCALE



**LIGHT POLE BASE PLATE DETAIL**  
381.0 (15") BOLT CIRCLE  
NOT TO SCALE



**POSITION OF HANDHOLE AND POLE NUMBER FOR SINGLE MAST ARM POLES**

FILE NAME =	USER NAME = #USER#	DESIGNED - FE1	REVISED -	<b>STATE OF ILLINOIS DEPARTMENT OF TRANSPORTATION</b>	<b>ELECTRICAL DETAILS</b>	F.A.U. RTE.	SECTION	COUNTY	TOTAL SHEETS	SHEET NO.	
#FILEL#		DRAWN - TMC	REVISED -			3003	00-00084-00-PV	DUPAGE	112	68	
		CHECKED - MAR	REVISED -			BLACKHAWK DR RECONSTRUCTION		CONTRACT NO. 63121			
		DATE - 01/02/09	REVISED -			FED. ROAD DIST. NO. 1   ILLINOIS   FED. AID PROJECT					
				SCALE: NONE		SHEET NO. 1 OF 3 SHEETS		STA.		TO STA.	