

ROUTE MARKERS

FOR U.S. ROUTES
MI-40-2424

FOR ILLINOIS ROUTES
MI-50-2424

R.R. UNMARKED ROUTES
SPECIAL 24" x 18" VARIABLE
4" BLACK LETTERS ON WHITE
REFLECTIVE BACKGROUND

ARROWS SIGNS

M5-1L-2115

M5-1R-2115

M6-1L-2115

M6-1R-2115

M6-3-2115

CARDINAL DIRECTION & DETOUR SIGNS

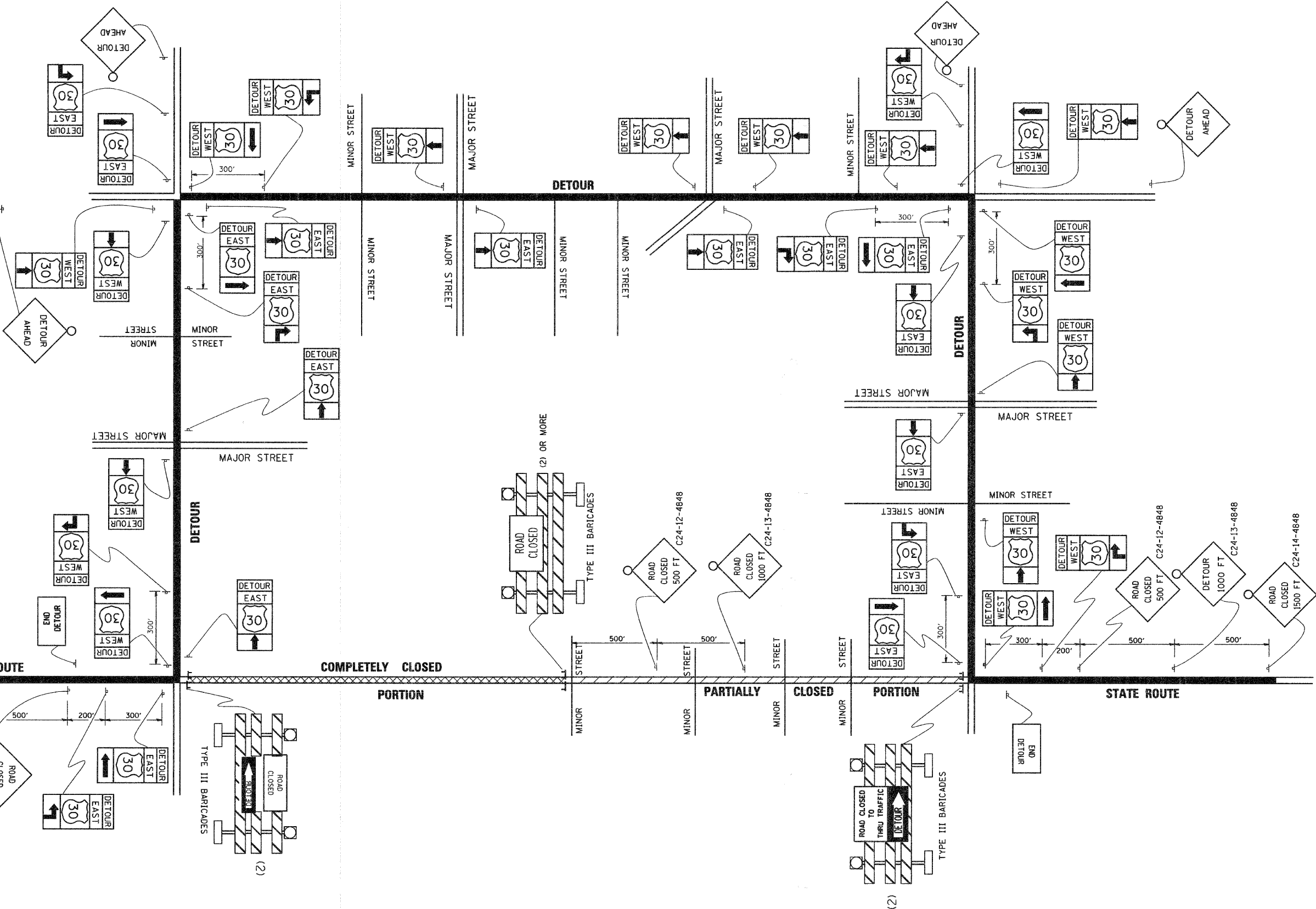
NORTH M3-1-219

EAST M3-2-219

SOUTH M3-3-219

WEST M3-4-219

DETOUR MI-7-219



FILE NAME =
M:\diststd\22x34\c21.dgn

USER NAME = gaglienobt
DESIGNED -
DRAWN -
PLOT SCALE = 50.0000' / IN.
PLOT DATE = 1/4/2008

REVISOR -
CHECKED -
DATE -

REVISED - 10-18-02
REVISED -
REVISED -
REVISED -

**STATE OF ILLINOIS
DEPARTMENT OF TRANSPORTATION**

**TYPICAL MARKING
FOR CLOSING STATE HIGHWAYS**

SCALE: NONE SHEET NO. 1 OF 1 SHEETS STA. TO STA.

F.A. RTE.	SECTION	COUNTY	TOTAL SHEETS	SHEET NO.
3003	00-00084-00-PV	DUPAGE	112	79
TC-21			CONTRACT NO.	
FED. ROAD DIST. NO. 1 ILLINOIS FED. AID PROJECT				

BLACKHAWK DR RECONSTRUCTION