

F.A. RTE.	SECTION	COUNTY	TOTAL SHEETS	SHEET NO.
53	08-00263-01SP	DUPAGE	16	1

**INDEX OF SHEETS**

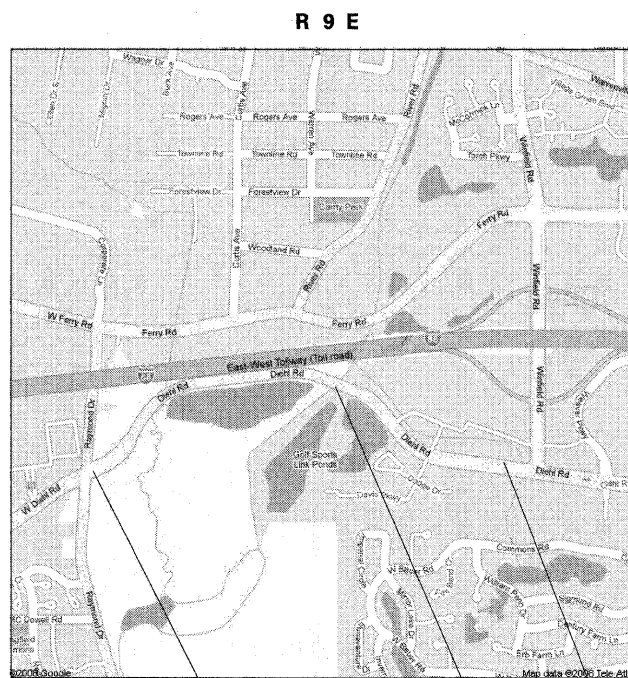
SHEET NO.	DESCRIPTION
1	TITLE SHEET/INDEX
2	SUMMARY OF QUANTITIES
3	GENERAL NOTES, DESIGN STANDARDS
4-5	TYPICAL SECTIONS
6-8	PLAN SHEETS
9-11	PAVEMENT MARKING SHEETS
12-16	STANDARD DETAILS

HIGHWAY STANDARDS	
000001-05	STANDARD SYMBOLS, ABBREVIATIONS, AND PATTERNS
001006	DECIMAL OF AN INCH AND OF A FOOT
420001-07	PAVEMENT JOINTS
420401-07	BRIDGE APPROACH PAVEMENT
421001-02	BAR REINFORCEMENT FOR CRC PAVEMENT
604001-03	FRAMES AND LIDS, TYPE 1
604036-02	GRATE, TYPE 8
604046-02	FRAME & GRATE, TYPE 10
606001-04	CONCRETE CURB & COMBINATION CURB & GUTTER
635006-03	REFLECTOR AND TERMINAL MARKER PLACEMENT
642001-01	SHOULDER RUMBLE STRIPS
701601-06	URBAN LANE CLOSURE, MULTILANE, 1-WAY OR 2-WAY, WITH NONTRAVERSABLE MEDIAN
701606-06	URBAN LANE CLOSURE, MULTILANE, 2-WAY MOUNTABLE MEDIAN
701701-06	LANE CLOSURE, MULTILANE, INTERSECTION, FOR SPEEDS <45 MPH
701901-01	TRAFFIC CONTROL DEVICES
780001-02	TYPICAL PAVEMENT MARKINGS
781001-03	TYPICAL APPLICATIONS, RAISED REFLECTIVE PAVEMENT MARKERS
886001-01	DETECTOR LOOP INSTALLATIONS
886006-01	TYPICAL LAYOUTS FOR DETECTION LOOPS
TC-10	TRAFFIC CONTROL AND PROTECTION FOR SIDE ROADS, INTERSECTIONS & DRIVEWAYS
TC-13	DISTRICT 1 TYPICAL PAVEMENT MARKINGS

**STATE OF ILLINOIS**  
**DEPARTMENT OF TRANSPORTATION**  
**DIVISION OF HIGHWAYS**  
**PLANS FOR PROPOSED**  
**FEDERAL AID HIGHWAY**

**COUNTY HIGHWAY 53 DIEHL ROAD**  
**SECTION 08-00263-01-SP**  
**PROJECT HSIP-8003(954)**  
**FAU 1485**  
**JOB NO: C-91-209-08**  
**DUPAGE COUNTY**



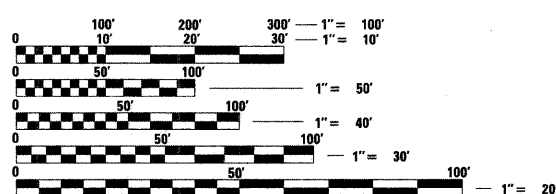
T 38 N

PROJECT LIMITS  
 STA. 17+60.50  
 DIEHL ROAD

PROJECT ENDS  
 STA. 79+10.00  
 DIEHL ROAD

BRIDGE OMISSION  
 STA. 54+41 TO STA. 56+21

GROSS LENGTH OF PROJECT = 6149.50 FT. = 1.16 MI.  
 NET LENGTH OF PROJECT = 5969.50 FT. = 1.13 MI.



FULL SIZE PLANS HAVE BEEN PREPARED USING STANDARD ENGINEERING SCALES. REDUCED SIZED PLANS WILL NOT CONFORM TO STANDARD SCALES. IN MAKING MEASUREMENTS ON REDUCED PLANS, THE ABOVE SCALES MAY BE USED.

J.U.L.I.E.  
 JOINT UTILITY LOCATION INFORMATION FOR EXCAVATION  
 1-800-892-0123

PLANS PREPARED BY  
 HDR ENGINEERING INC.  
 FOR  
 DUPAGE COUNTY DIVISION OF TRANSPORTATION  
 CHARLES F. TOKARSKI P.E., COUNTY ENGINEER

PROJECT ENGINEER: CURTIS CORNWELL, P.E. (773)380-7939  
 PROJECT MANAGER: ROBERT GORSKI, P.E. (773)380-7951  
 CONTRACT NO. 63122

FIELD ENGINEER: MARILYN SOLOMON, P.E. (847)705-4407

DESIGN DESIGNATION  
 ADT: 29,000  
 YEAR: 2008

STATE OF ILLINOIS  
 DEPARTMENT OF TRANSPORTATION

APPROVED *December 29, 2008*  
*Charles F. Tokarski*  
 DUPAGE COUNTY DIVISION OF TRANSPORTATION, COUNTY ENGINEER

PASSED *FEBRUARY 13, 2009*  
*Curtis Cornwell*  
 DISTRICT 1 ENGINEER OF LOCAL ROADS & STREETS

RELEASING FOR BID  
 BASED ON LIMITED REVIEW *FEBRUARY 13, 2009*  
*Diana M. O'Keefe*  
 DEPUTY DIRECTOR OF HIGHWAYS, REGION 1 ENGINEER

ROBERT T. GORSKI  
 062-057501  
 LICENSED PROFESSIONAL ENGINEER OF ILLINOIS

BY: *Robert Gorski* DATE: *12/30/08*  
 HDR ENGINEERING, INC.  
 LICENSE EXPIRES NOV. 30, 2009

PRINTED BY THE AUTHORITY  
 OF THE STATE OF ILLINOIS