

FOR INDEX OF SHEETS, SEE SHEET NO. 2

FOR INDEX OF HIGHWAY STANDARDS, SEE SHEET NO. 2

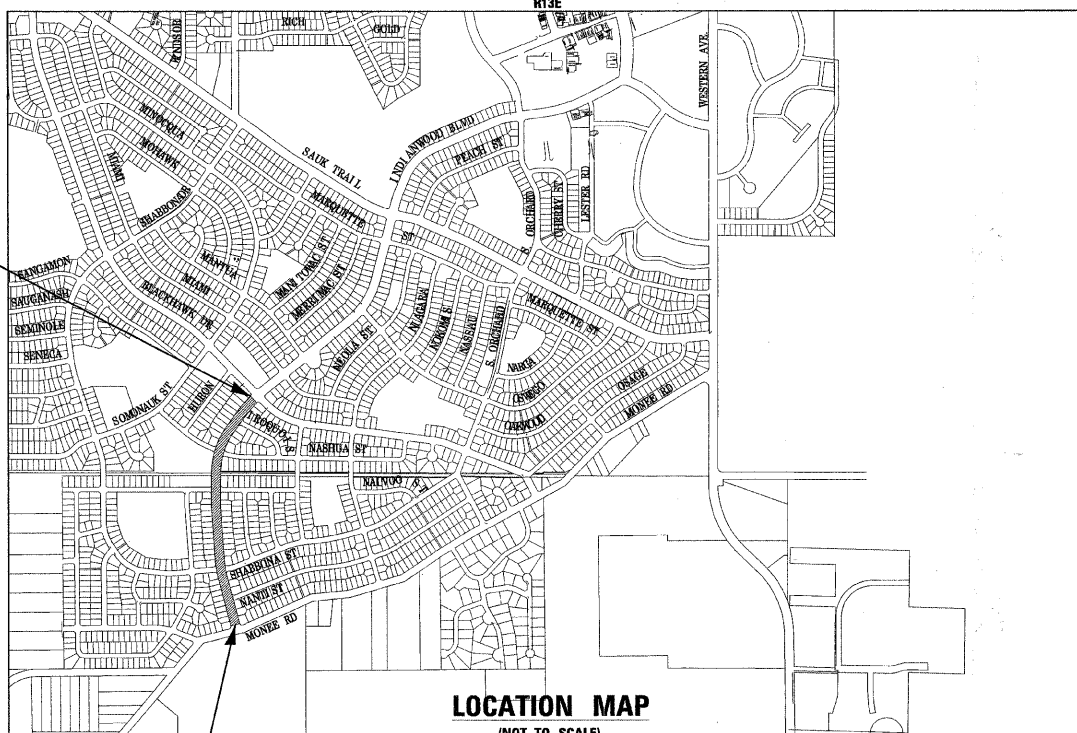
STATE OF ILLINOIS
DEPARTMENT OF TRANSPORTATION
DIVISION OF HIGHWAYS

PLANS FOR PROPOSED
FEDERAL AID PROJECT
INDIANWOOD BLVD (MONEE RD TO BLACKHAWK DR)
STREET LIGHTING
PROJECT NO.: TCSP-061L(016)
SECTION 09-00091-01-LT
VILLAGE OF PARK FOREST
COOK COUNTY
JOB: C-91-238-09

| | | | | |
|--------------------|----------|--------------------------------|--------------|-----------|
| F.A. RTE. | SECTION | COUNTY | TOTAL SHEETS | SHEET NO. |
| • | •• | COOK | 7 | 1 |
| STA. | TO STA. | | | |
| FED. ROAD DIST. NO | ILLINOIS | FED AID PROJECT TCSP-061L(006) | | |
| • N/A | | CONTRACT NO. 63129 | | |
| •• 09-00091-01-LT | | | | |

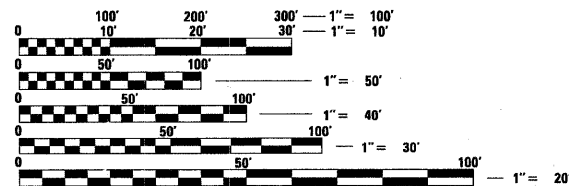


INDIANWOOD BLVD
IMPROVEMENT ENDS
STA. 99 + 70



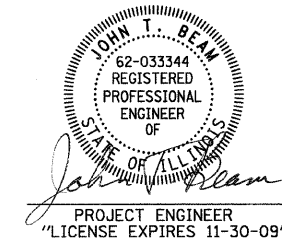
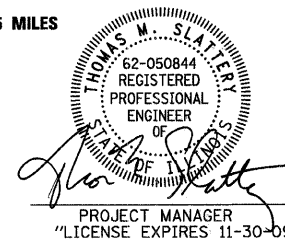
RICH TOWNSHIP
GROSS AND NET LENGTH OF IMPROVEMENT = 2,299 LF OR 0.435 MILES

INDIANWOOD BLVD
IMPROVEMENT BEGINS
STA. 76 + 71



FULL SIZE PLANS HAVE BEEN PREPARED USING STANDARD ENGINEERING SCALES. REDUCED SIZED PLANS WILL NOT CONFORM TO STANDARD SCALES. IN MAKING MEASUREMENTS ON REDUCED PLANS, THE ABOVE SCALES MAY BE USED.

J.U.L.I.E.
JOINT UTILITY LOCATION INFORMATION FOR EXCAVATION
1-800-892-0123



STATE OF ILLINOIS
DEPARTMENT OF TRANSPORTATION
DIVISION OF HIGHWAYS

APPROVED 1-12-2009
Kenneth G. Egan
VILLAGE OF PARK FOREST, DIRECTOR OF PUBLIC WORKS

PASSED FEBRUARY 10, 2009
Christopher Holt
LOCAL ROADS ENGINEER

RELEASING FOR BID
BASED ON LIMITED
REVIEW FEBRUARY 10, 2009
Diana M. O'Keefe
DEPUTY DIRECTOR OF
HIGHWAYS, REGION 1 ENGINEER

PRINTED BY THE AUTHORITY
OF THE STATE OF ILLINOIS

CONTRACT NO. 63129

Burlington, Wisconsin 262.763.7834
Crystal Lake, Illinois 815.459.1260
DeKalb, Illinois 815.787.3111
Itasca, Illinois 630.773.1870
Mokena, Illinois 708.478.2090
Grayslake, Illinois 847.223.5088
(Plainfield, Illinois) 815.609.7425
Rockford, Illinois 815.489.1551
Madison, Wisconsin 608.347.1542

B&W PROJECT NO.: 061389.40 DATE: 12-08-08

(OFFICE WHICH PREPARED PLANS)

COPYRIGHT © 2007 BY BAXTER WOODMAN, INC.
 ALL RIGHTS RESERVED. PROFESSIONAL ENGINEERING
 LICENSE NO. 62-050844 - EXPIRES 11/30/09
 1/2/2009 8:21:43 AM
 BUREAU OF LOCAL ROADS AND STREETS: MELCHOR MANGOBA, (847)705-4408

GENERAL NOTES

ALL CONSTRUCTION SHALL BE DONE IN ACCORDANCE WITH THE DETAILS IN THE PLANS, THE SPECIAL PROVISIONS INCLUDED IN THE CONTRACT DOCUMENTS, AND THE LATEST EDITION OF THE FOLLOWING STATE OF ILLINOIS SPECIFICATIONS: "THE STANDARD SPECIFICATIONS FOR ROAD AND BRIDGE CONSTRUCTION" (REFERRED TO AS THE "STANDARD SPECIFICATIONS"), THE "SUPPLEMENTAL SPECIFICATIONS AND RECURRING SPECIAL PROVISIONS", THE "STANDARD SPECIFICATIONS FOR TRAFFIC CONTROL ITEMS", THE "MANUAL ON UNIFORM TRAFFIC CONTROL DEVICES FOR STREETS AND HIGHWAYS", THE "MANUAL OF TEST PROCEDURES FOR MATERIALS" AND THE "STANDARD SPECIFICATIONS FOR WATER AND SEWER MAIN CONSTRUCTION IN ILLINOIS".

UTILITY LOCATIONS HAVE NOT BEEN SHOWN ON THESE PLANS. THE CONTRACTOR SHALL HAVE THE RESPECTIVE UTILITY COMPANIES FIELD LOCATE ALL THEIR FACILITIES PRIOR TO BEGINNING CONSTRUCTION. THE CONTRACTOR SHALL ALSO VERIFY THE DEPTHS OF THE EXISTING UTILITIES IF NECESSARY. ANY RELOCATION OR LOWERING OF UTILITIES SHALL BE COORDINATED BY THE CONTRACTOR.

THE CONTRACTOR SHALL BE RESPONSIBLE FOR THE PROTECTION OF ALL UNDERGROUND OR SURFACE UTILITIES EVEN THOUGH THEY MAY NOT BE SHOWN ON THE PLANS. ANY UTILITY THAT IS DAMAGED DURING CONSTRUCTION SHALL BE REPAIRED OR REPLACED AT THE CONTRACTOR'S EXPENSE TO THE SATISFACTION OF THE ENGINEER OR VILLAGE.

THE CONTRACTOR SHALL NOTIFY THE VILLAGE PUBLIC WORKS ADMINISTRATOR AT LEAST 48 HOURS IN ADVANCE OF BEGINNING WORK TO OBTAIN VILLAGE UTILITY LOCATIONS AND SHALL COORDINATE ALL CONSTRUCTION OPERATIONS WITH THE ENGINEER.

MATERIALS RESULTING FROM THE REMOVAL OF PAVEMENT, DRIVEWAYS, CURB AND GUTTER, HOT-MIX ASPHALT SURFACES, ETC. SHALL BE REMOVED AT THE END OF EACH DAY TO AN APPROVED SITE. IN THE JUDGMENT OF THE VILLAGE, SHOULD IT BE NECESSARY TO REMOVE SUCH MATERIALS, THE VILLAGE WILL HAVE THE MATERIAL REMOVED AND THE CONTRACTOR WILL BE BILLED (CHARGED) ACCORDINGLY.

THE CONTRACTOR MAY OBTAIN MUNICIPAL WATER IN BULK, AT NO CHARGE, AS LONG AS THERE IS NOT A "WATERING BAN" IN EFFECT. THE INDISCRIMINATE USE OF FIRE HYDRANTS IS STRICTLY PROHIBITED. WATER FOR CONSTRUCTION SHALL BE METERED OR OTHERWISE ACCOUNTED FOR AND A DAILY LOG MAINTAINED. THE CONTRACTOR SHALL PROVIDE THE WATER TRUCK AND DRIVER REQUIRED TO OBTAIN AND TRANSPORT THIS WATER. THE VILLAGE RESERVES THE RIGHT TO RESTRICT OR REFUSE THE USE OF VILLAGE WATER IF DEEMED NECESSARY.

IT WILL BE THE CONTRACTOR'S RESPONSIBILITY TO NOTIFY RESIDENTS AND THE VILLAGE WHEN ACCESS TO THEIR DRIVEWAYS WILL BE TEMPORARILY CLOSED. THE CONTRACTOR SHALL DISTRIBUTE NOTICES PROVIDED BY THE VILLAGE TO RESIDENTS. EVERY EFFORT SHALL BE MADE TO ACCOMMODATE ACCESS TO THESE PROPERTIES INCLUDING KNOCKING ON DOORS WHEN DRIVEWAYS ARE ABOUT TO BE CLOSED.

THE CONTRACTOR SHALL PROTECT AND CAREFULLY PRESERVE ALL SECTION OR SUBSECTION MONUMENTS OR PROPERTY OR REFERENCE MARKERS UNTIL THE OWNERS, HIS AGENT OR AN AUTHORIZED SURVEYOR HAS WITNESSED OR OTHERWISE REFERENCED THEIR LOCATIONS.

ACCESS TO PRIVATE DRIVEWAYS SHALL BE PROVIDED AT ALL TIMES EXCEPT DURING ACTUAL CONSTRUCTION ADJACENT THERE TO. TEMPORARY RAMPS SHALL BE CONSTRUCTED AS NEEDED TO PROVIDE SUCH ACCESS, UTILIZING CRUSHED STONE OR CRUSHED GRAVEL.

THE CONTRACTOR SHALL PROVIDE A REQUEST FOR MATERIAL TESTING TO THE ILLINOIS DEPARTMENT OF TRANSPORTATION BUREAU OF MATERIALS ORDER BOARD (PHONE (847) 705-4337) BY 4 PM, 24-HOURS IN ADVANCE OF CONSTRUCTION FOR INSPECTION OF ALL HOT-MIX ASPHALT AND CONCRETE MATERIALS USED ON THIS PROJECT.

THE CONTRACTOR SHALL PROVIDE AND INSTALL TWO (2) WEIGHTED SANDBAGS ON EACH TYPE I OR TYPE II BARRICADE USED. ONE (1) WEIGHTED SANDBAG SHALL BE PLACED ACROSS EACH BOTTOM RAIL.

EXISTING STREET LIGHTING UNITS TO REMAIN IN OPERATION AND TO BE MAINTAINED BY THE CONTRACTOR UNTIL NEW STREET LIGHTS ARE OPERATIONAL AND ACCEPTED BY THE VILLAGE.

THE CONTRACTOR SHALL ADJUST LOCATION OF LIGHT POLES AT INTERSECTION SO AS NOT TO BLOCK VIEW OF EXISTING TRAFFIC SIGNALS.

CARE IS TO BE TAKEN AS NOT TO DAMAGE ANY OF THE EXISTING TRAFFIC SIGNAL CONDUITS, DETECTORS AND EQUIPMENT. IF ANY OF THE TRAFFIC SIGNAL CONDUIT AND/OR EQUIPMENT IS DAMAGED THE CONTRACTOR SHALL REPAIR AND/OR REPLACE THE CONDUIT AND/OR EQUIPMENT AT NO COST TO THE COUNTY OR THE VILLAGE.

THE CONTRACTOR SHALL MAKE SPECIAL NOTE OF THE REQUIREMENT FOR BURIED WARNING TAPE, SPECIFIED AS PART OF "TRENCH AND BACKFILL FOR ELECTRICAL WORK". THE INSTALLATION OF THE TAPE SHALL BE INSPECTED AND APPROVED BY THE RESIDENT ENGINEER PRIOR TO BACKFILLING OR DURING PLOWING OPERATIONS, AS APPLICABLE.

THE CONTRACTOR SHALL BE RESPONSIBLE FOR THE ESTABLISHMENT OF FINISHED GRADE. THE RESIDENT ENGINEER MAY ASSIST THE CONTRACTOR, AS APPLICABLE, BUT THE RESPONSIBILITY FOR COORDINATING THE FINISHED GRADE ELEVATION WITH THE TOP OF FOUNDATION HEIGHTS AND THE LIGHT SHALL REMAIN WITH THE CONTRACTOR.

THE CONTRACTOR SHALL MAKE SPECIAL NOTE OF THE REQUIREMENTS FOR WIRE MARKERS AND SHALL TAG ALL WIRE ACCORDINGLY.

EQUIPMENT GROUND CONDUCTORS SHALL BE SPLICED AND/OR BONDED AT EACH LIGHT POLE OR OTHER PIECE OF EQUIPMENT.

CONDUIT AND UNIT DUCT MUST BE POSITIONED IN THE FIELD TO AVOID CONFLICT WITH TREES, BUSHES, DRAINS AND OTHER UTILITIES AND LANDSCAPING.

ALL DISTURBED AREAS WHERE RESTORATION IS NOT COVERED BY APPLICABLE SECTIONS OF THE SPECIAL PROVISIONS MUST BE RESTORED TO THE SATISFACTION OF THE ENGINEER. THE WORK MUST BE CONSIDERED INCIDENTAL TO THE CONTRACT. SEPARATE PAYMENT WILL NOT BE MADE.

THE EXACT LOCATIONS OF ALL UTILITIES SHALL BE VERIFIED BY THE CONTRACTOR BEFORE THE INSTALLATION OF ANY COMPONENTS OF THE LIGHTING SYSTEM. FOR THE LOCATIONS OF THE UTILITIES, CALL JULIE TOLL FREE AT 1-800-892-0123. IT IS THE CONTRACTOR'S RESPONSIBILITY TO LOCATE EXISTING TRAFFIC SIGNAL CABLES AND CONDUITS.

SUMMARY OF QUANTITIES

TYPE CODE Y030 1E

| ITEM NO. | DESCRIPTION | UNIT | QUANTITY Y030-1E |
|------------|--|-------|------------------|
| * 20101100 | TREE TRUNK PROTECTION | EACH | 5 |
| 67100100 | MOBILIZATION | L SUM | 1 |
| 70102630 | TRAFFIC CONTROL AND PROTECTION, STANDARD 701601 | L SUM | 1 |
| 70102635 | TRAFFIC CONTROL AND PROTECTION, STANDARD 701701 | L SUM | 1 |
| 80300100 | LOCATING UNDERGROUND CABLE | FOOT | 1000 |
| 80400100 | ELECTRICAL SERVICE INSTALLATION | EACH | 1 |
| 80400200 | ELECTRIC UTILITY SERVICE CONNECTION | L SUM | 1 |
| 81000600 | CONDUIT IN TRENCH, 2" DIA., GALVANIZED STEEL | FOOT | 235 |
| 81018500 | CONDUIT PUSHED, 2" DIA., GALVANIZED STEEL | FOOT | 320 |
| XX007275 | UNIT DUCT, 600V, 4-1C NO. 6 AND 1/C NO. 8 GROUND, (XLP-TYPE USE), 1 1/4" DIA. POLYETHYLENE | FOOT | 2850 |
| 81702400 | ELECTRICAL CABLE IN CONDUIT, 600 V. (XLP-TYPE USE) 3-1/C NO. 2 | FOOT | 200 |
| 81900200 | TRENCH & BACKFILL FOR ELECTRICAL WORK | FOOT | 2960 |
| 82102250 | LUMINAIRE, SODIUM VAPOR, HORIZONTAL MOUNT, 250 WATT | EACH | 24 |
| 82500505 | LIGHTING CONTROLLER, SPECIAL | EACH | 1 |
| XX007277 | LIGHTPOLE, FIBERGLASS BREAKAWAY, DIRECT EMBED, 35 FT. M.H., TWIN 12 FT. ARMS | EACH | 12 |
| * XX007278 | PARKWAY RESTORATION | SQ YD | 330 |
| 84200500 | REMOVAL OF EXISTING LIGHTING UNIT, SALVAGE | EACH | 2 |
| 84200600 | REMOVAL OF EXISTING LIGHTING UNIT, NO SALVAGE | EACH | 7 |

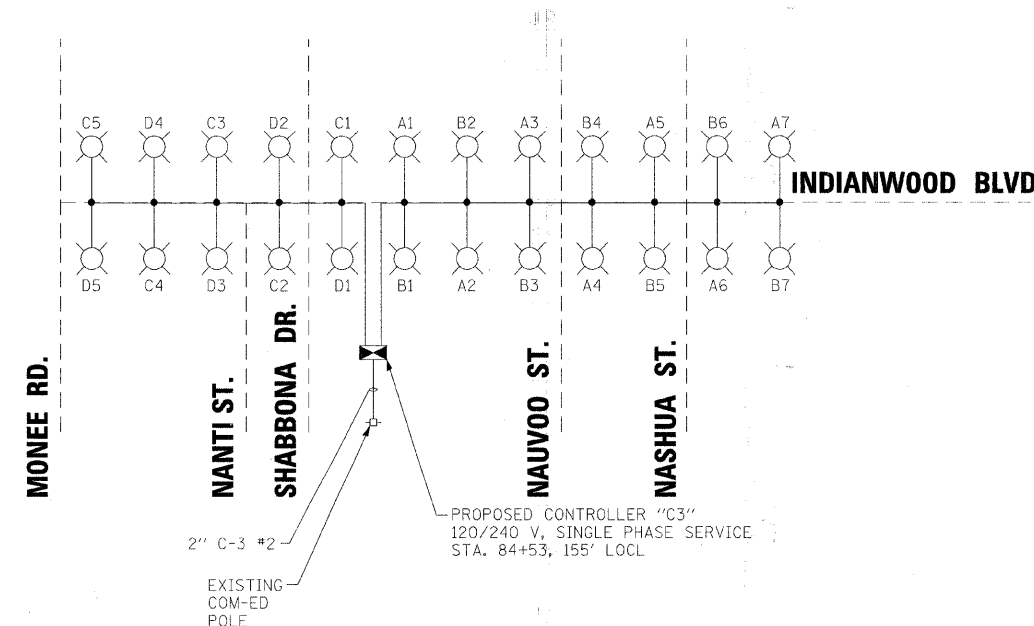
* SPECIALTY ITEMS

INDEX OF SHEETS

| SHEET NO. | TITLE |
|-----------|--|
| 1 | COVER SHEET |
| 2 | GENERAL NOTES, SUMMARY OF QUANTITIES, INDEX OF SHEETS AND HIGHWAY STANDARDS |
| 3 - 5 | STREET LIGHTING PLANS |
| 6 | STREET LIGHTING DETAILS |
| 7 | DISTRICT ONE DETAIL TC-10: TRAFFIC CONTROL AND PROTECTION FOR SIDEROADS, INTERSECTIONS AND DRIVEWAYS |

HIGHWAY STANDARDS

| STANDARD NO. | TITLE |
|--------------|--|
| 000001-05 | STANDARD SYMBOLS, ABBREVIATIONS AND PATTERNS |
| 701601-06 | URBAN LANE CLOSURE, MULTI-LANE, 1W OR 2W WITH NON-TRAVERSABLE MEDIAN |
| 701701-06 | URBAN LANE CLOSURE, MULTI-LANE INTERSECTION |
| 701901-01 | TRAFFIC CONTROL DEVICES |



COPYRIGHT © 2008 BY BAXTER & WOODMAN, INC. ... \projects\1160189-gen-notes-phase II.sht
 STATE OF ILLINOIS - PROFESSIONAL DESIGN FIRM
 LICENSE NO. 184-00071 - EXPIRES 4/30/2009
 1/23/2009 10:55:25 AM



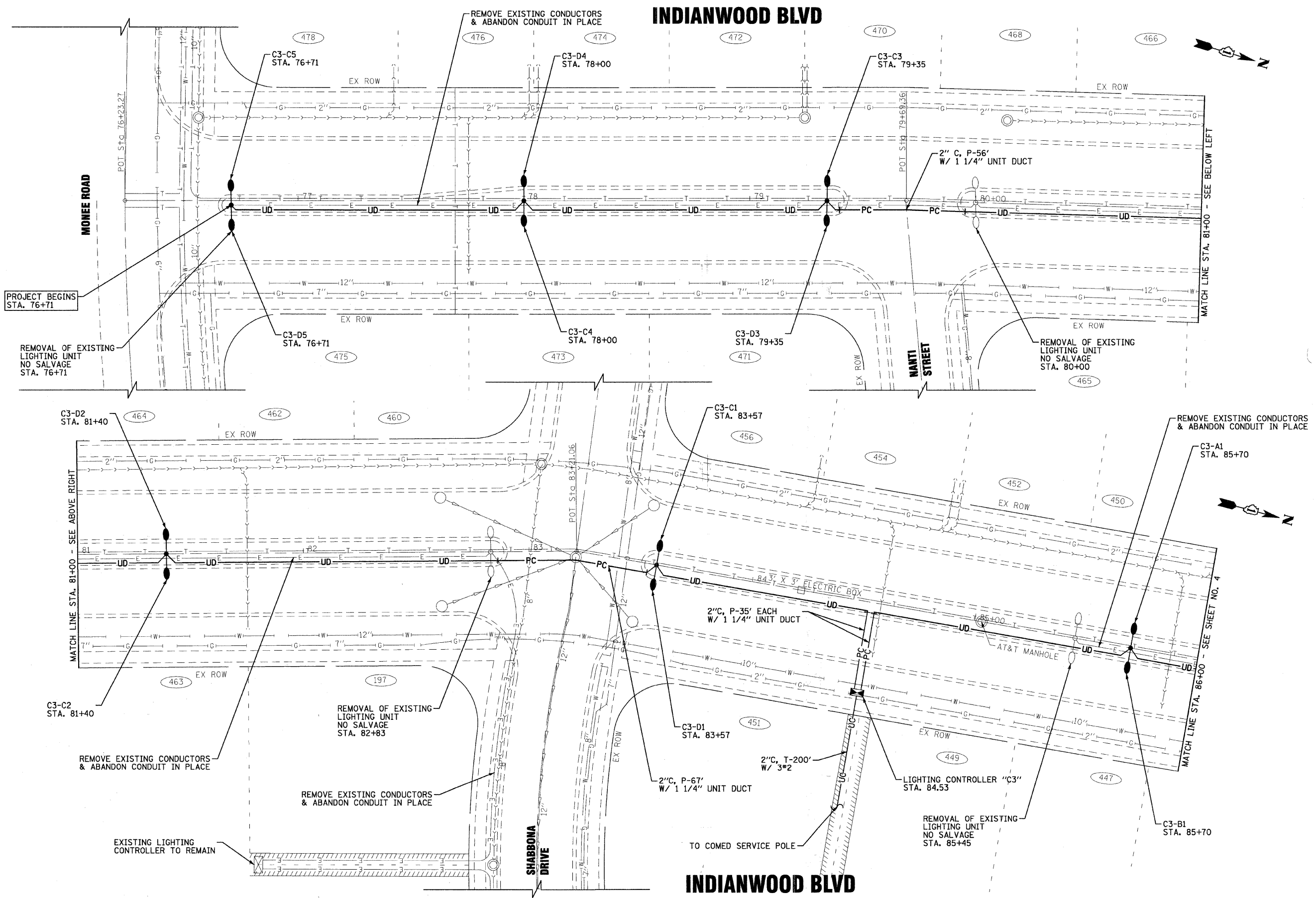
| | |
|-----------------|---|
| DESIGNED - JTB | REVISED - |
| DRAWN - KAR | REVISED - |
| CHECKED - TMS | REVISED - |
| DATE - 12-08-08 | FILE NAME - 061389-gen-notes-phase II.sht |

**VILLAGE OF PARK FOREST, ILLINOIS
INDIANWOOD BOULEVARD
MONEE RD. TO BLACKHAWK DR.**

**GENERAL NOTES, WIRING DIAGRAM,
SUMMARY OF QUANTITIES,
INDEX OF SHEETS & HIGHWAY STANDARDS**

SCALE: STA. TO STA.

| | | | | |
|---|----------------|--------|--------------------|-----------|
| F.A. RTE. | SECTION | COUNTY | TOTAL SHEETS | SHEET NO. |
| | 09-00091-01-LT | COOK | 7 | 2 |
| FED. ROAD DIST. NO. ILLINOIS FED. AID PROJECT | | | CONTRACT NO. 63129 | |
| | | | TCSP-061L (006) | |



COPYRIGHT © 2008 BY BAXTER & WOODMAN, INC.
 STATE OF ILLINOIS - PROFESSIONAL DESIGN FIRM
 LICENSE NO. - BR-00021 - EXPIRES 4/30/2009
 1/29/2009 10:58:28 AM
 I:\projects\061389-01\signs from mckenna\phase 1\061389-lighting-1.sht

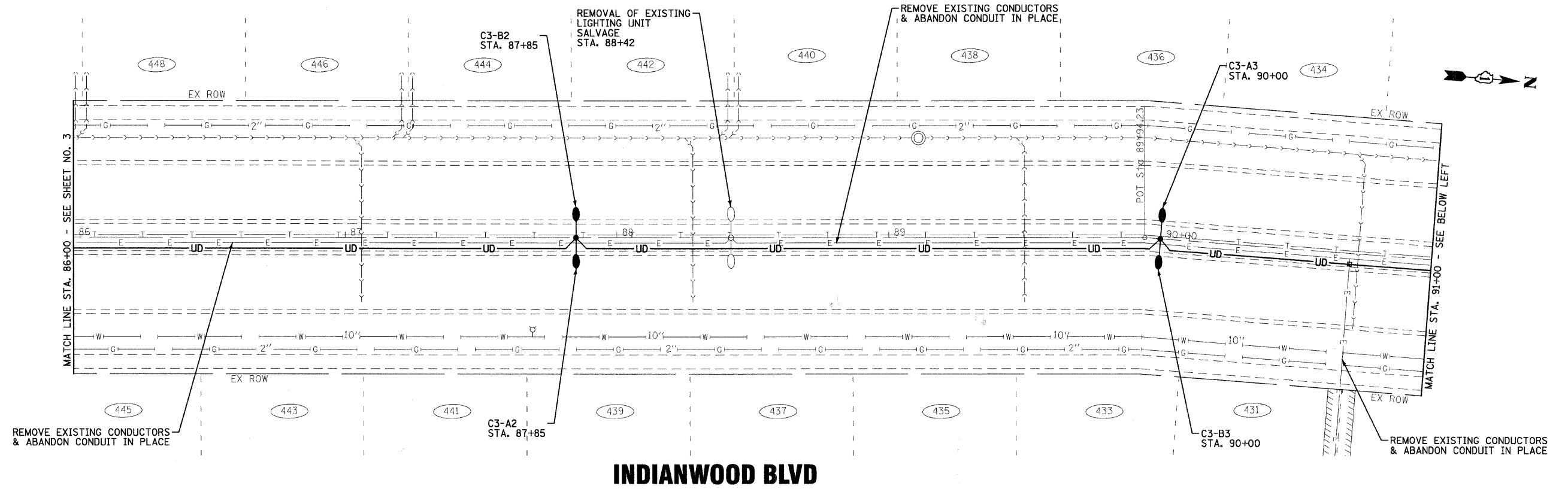


| | | | |
|------------|----------|-------------|----------------------|
| DESIGNED - | JTB | REVISED - | |
| DRAWN - | KAR | REVISED - | |
| CHECKED - | TMS | REVISED - | |
| DATE - | 12-08-08 | FILE NAME - | 061389-1ghting-1.sht |

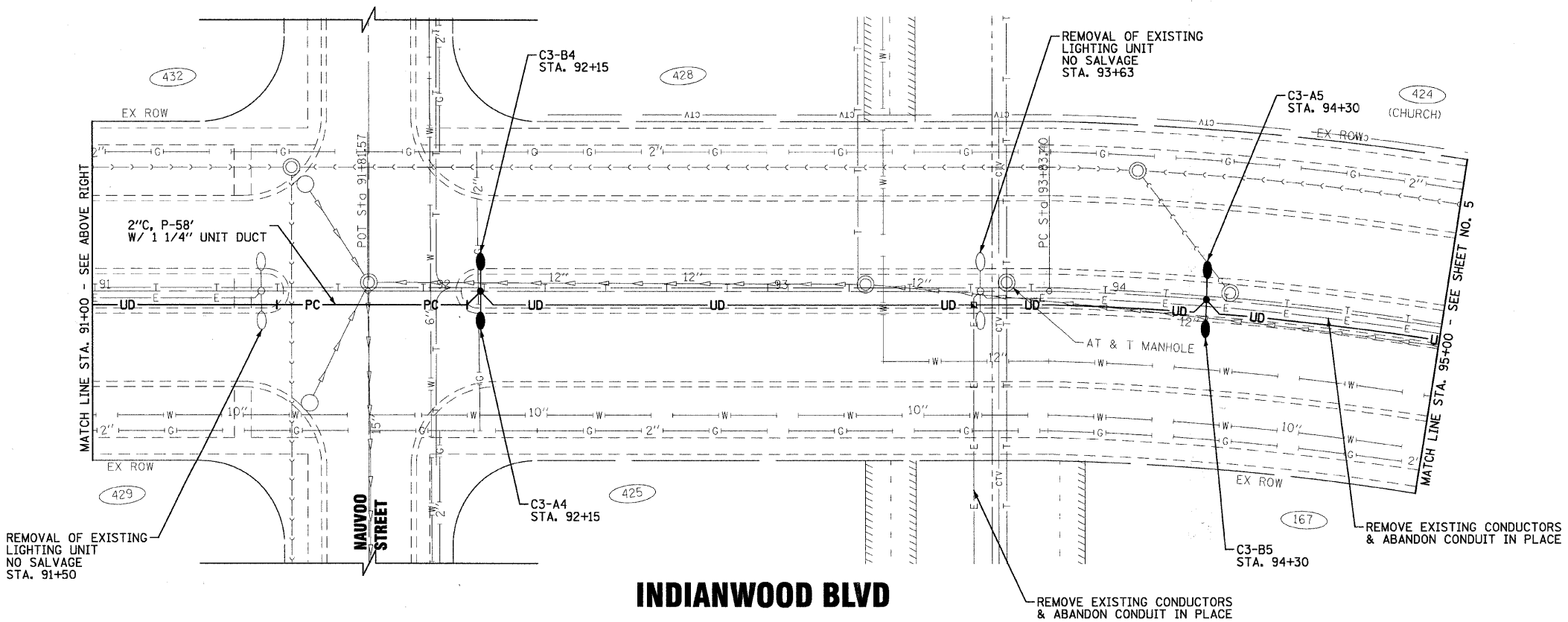
VILLAGE OF PARK FOREST, ILLINOIS
INDIANWOOD BOULEVARD
MONEE RD. TO BLACKHAWK DR.

STREET LIGHTING PLAN
 SCALE: 1" = 20'
 STA. 76+23 TO STA. 86+00

| | | | | |
|---|----------------|--------|--------------|-----------|
| F.A. RTE. | SECTION | COUNTY | TOTAL SHEETS | SHEET NO. |
| | 09-00091-01-LT | COOK | 7 | 3 |
| CONTRACT NO. 63129 | | | | |
| FED. ROAD DIST. NO. [ILLINOIS] FED. AID PROJECT TCSP-061L (006) | | | | |



INDIANWOOD BLVD



INDIANWOOD BLVD

COPYRIGHT © 2009 BY BAKER & WOODMAN, INC.
 STATE OF ILLINOIS - PROFESSIONAL DESIGN FIRM
 LICENSE NO. - 061389-EXPRES. 4/20/2009
 1/29/2009 10:58:59 AM
 I:\p\k\1106389\0\logns from mokena\subbase 1106389-lighting-2.shx



| | |
|-----------------|-----------------------------------|
| DESIGNED - JTB | REVISED - |
| DRAWN - KAR | REVISED - |
| CHECKED - TMS | REVISED - |
| DATE - 12-08-08 | FILE NAME - 061389-lighting-2.shx |

**VILLAGE OF PARK FOREST, ILLINOIS
INDIANWOOD BOULEVARD
MONEE RD. TO BLACKHAWK DR.**

STREET LIGHTING PLAN

SCALE: 1" = 20'

STA. 86+00 TO STA. 95+00

| | | | | |
|---|----------------|--------|--------------|-----------|
| F.A. RTE. | SECTION | COUNTY | TOTAL SHEETS | SHEET NO. |
| | 09-00091-01-LT | COOK | 7 | 4 |
| CONTRACT NO. 63129 | | | | |
| FED. ROAD DIST. NO. [ILLINOIS] FED. AID PROJECT TCSP-061L (006) | | | | |

REMOVE EXISTING CONDUCTORS & ABANDON CONDUIT IN PLACE

C3-B6 STA. 96+38

C3-A7 STA. 98+68

REMOVE EXISTING CONDUCTORS & ABANDON CONDUIT IN PLACE

REMOVAL OF EXISTING LIGHTING UNIT SALVAGE STA. 99+70

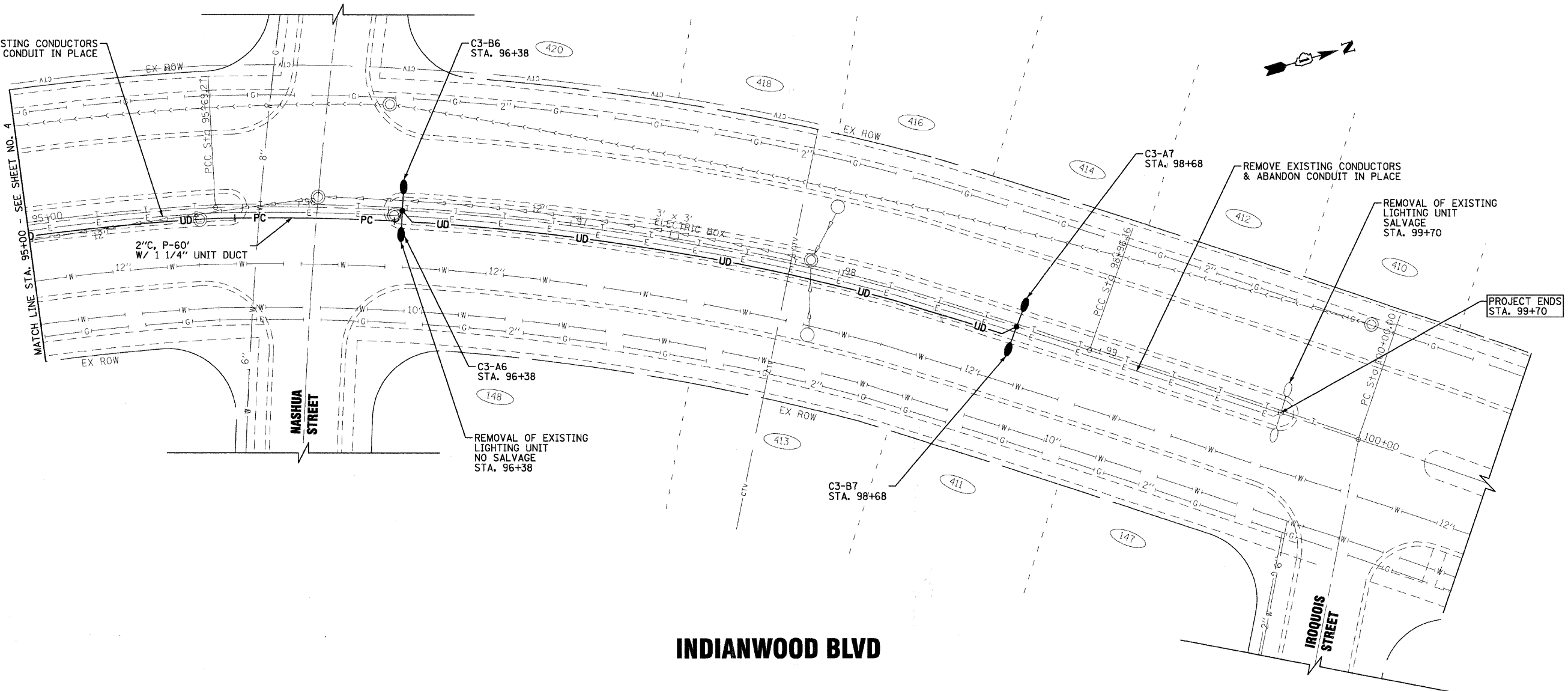
PROJECT ENDS STA. 99+70

C3-A6 STA. 96+38

REMOVAL OF EXISTING LIGHTING UNIT NO SALVAGE STA. 96+38

C3-B7 STA. 98+68

INDIANWOOD BLVD



COPYRIGHT © 2009 BY BAXTER & WOODMAN, INC.
 STATE OF ILLINOIS - PROFESSIONAL DESIGN FIRM
 LICENSE NO. - BR-0002 - EXPIRES 4/30/2009
 1/29/2009 10:36:59 AM
 \\061389-Project\bl...
 B:\P\11\061389-0\Signs from mckemol\phase 1\061389-lighting-3.shx



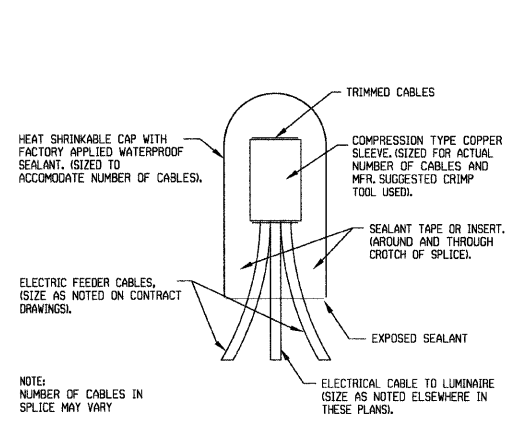
| | |
|-----------------|-----------------------------------|
| DESIGNED - JTB | REVISED - |
| DRAWN - KAR | REVISED - |
| CHECKED - TMS | REVISED - |
| DATE - 12-08-08 | FILE NAME - 061389-lighting-3.shx |

VILLAGE OF PARK FOREST, ILLINOIS
INDIANWOOD BOULEVARD
MONEE RD. TO BLACKHAWK DR.

STREET LIGHTING PLAN

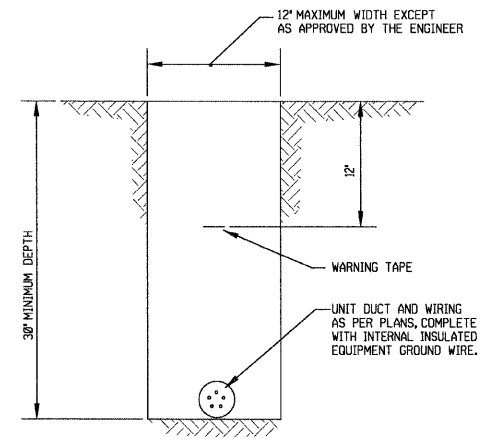
SCALE: 1" = 20' STA. 95+00 TO STA. 100+50

| F.A. RTE. | SECTION | COUNTY | TOTAL SHEETS | SHEET NO. |
|---|----------------|--------|--------------|-----------|
| | 09-00091-01-LT | COOK | 7 | 5 |
| CONTRACT NO. 63129 | | | | |
| FED. ROAD DIST. NO. [ILLINOIS] FED. AID PROJECT TCSP-06IL (006) | | | | |



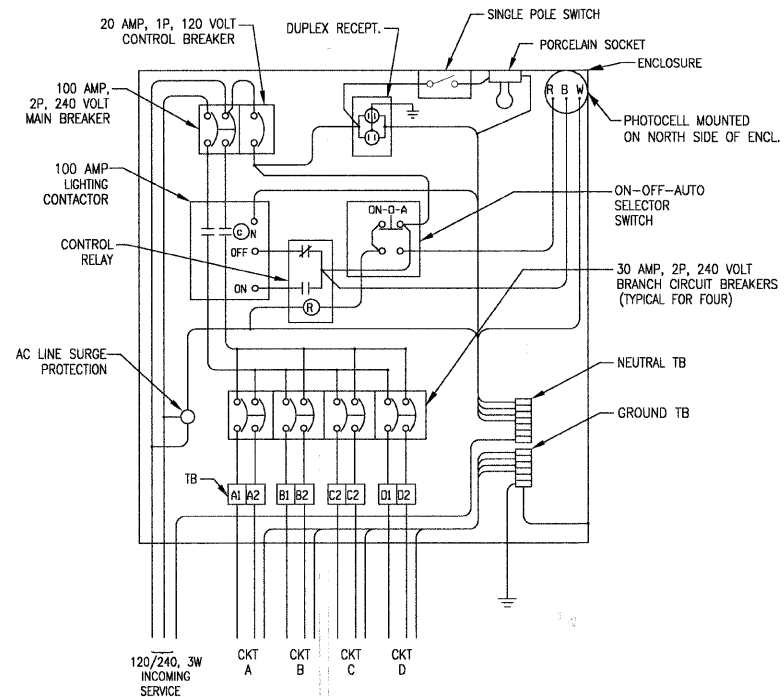
SPLICING ELECTRICAL CABLES
BASIC MATERIALS AND METHODS

NO SCALE



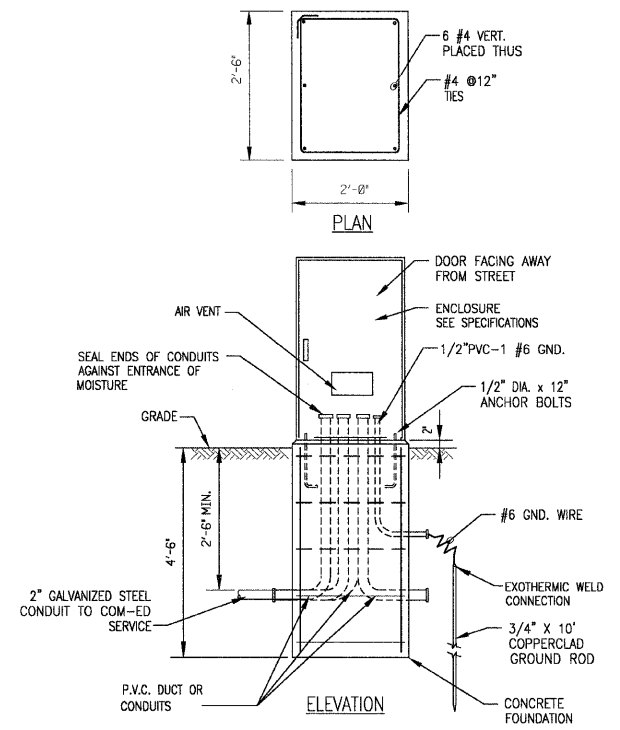
TYPICAL WIRING IN TRENCH DETAIL

NO SCALE



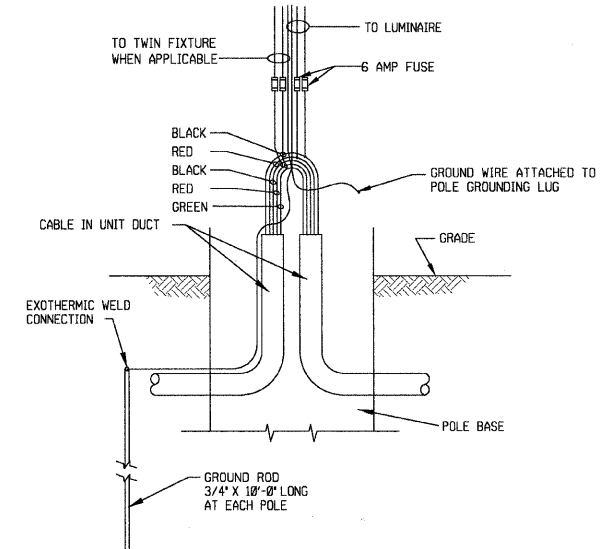
LIGHTING CONTROLLER C1 & C2 WIRING DIAGRAM

NO SCALE



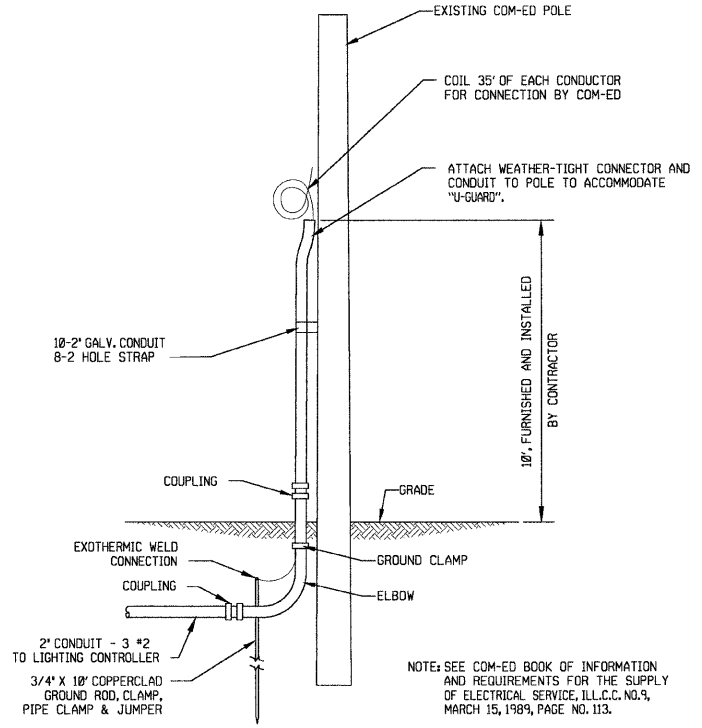
LIGHTING CONTROLLER AND FOUNDATION DETAIL

NO SCALE



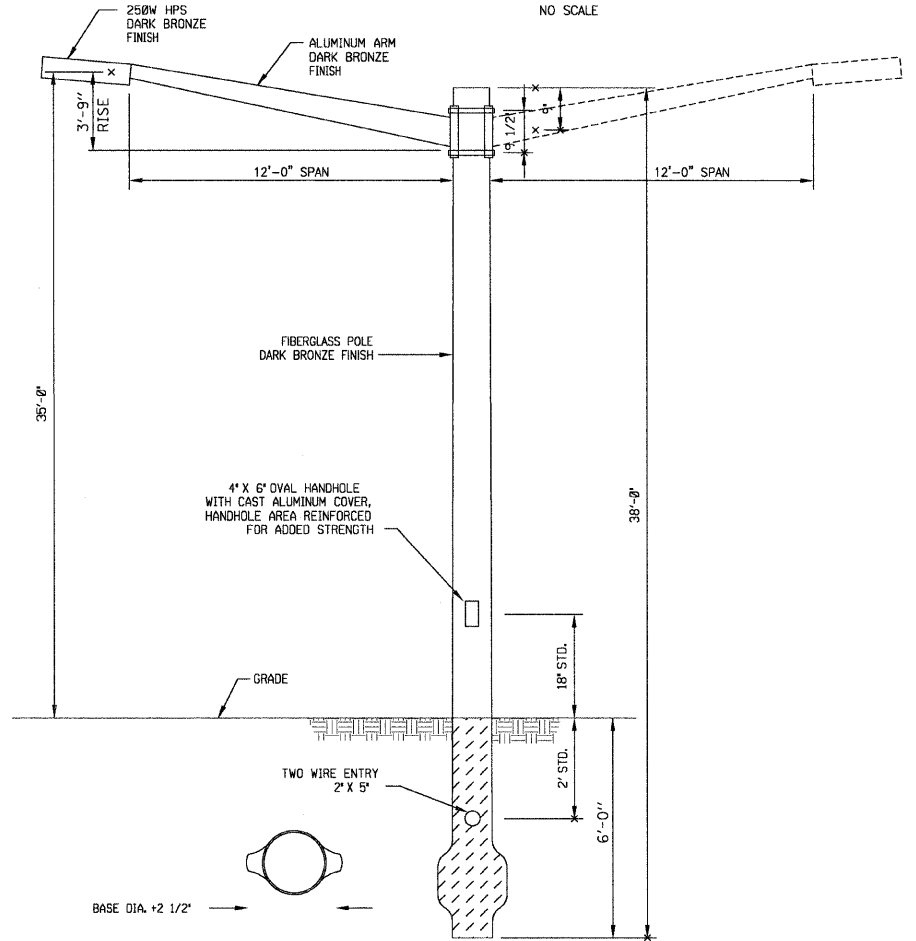
POLE BASE WIRING DETAIL

NO SCALE



COM-ED OVERHEAD CONNECTION POLE

NO SCALE



STREET LIGHT POLE TWIN & SINGLE

NO SCALE

NOTE: INSTALL LIGHT POLE IN ACCORDANCE WITH MANUFACTURER'S RECOMMENDATIONS. PROVIDE 6 INCHES OF COARSE GRAVEL IN BOTTOM OF AUGERED HOLE FOR DRAINAGE AND SUPPORT. AUGER HOLE LARGE ENOUGH TO ACCOMMODATE THE BUTT OF THE POLE. BACKFILL HOLE AROUND POLE WITH CRUSHED LIME STONE SCREENINGS COMPACTED BY MACHINE OR HAND TAMPING IN 6-INCH LAYERS. ADD 1/2 BAG OF DRY CEMENT TO TAMPING MIXTURE AROUND POLE IF SOIL CONDITIONS REQUIRE. PLUMB AND ALIGN POLE IN A VERTICAL POSITION ONCE POLE IS SELF-SUPPORTING.

NOTE: SEE COM-ED BOOK OF INFORMATION AND REQUIREMENTS FOR THE SUPPLY OF ELECTRICAL SERVICE, ILL.C.C. NO. 9, MARCH 15, 1989, PAGE NO. 113.

COPYRIGHT © 2008 BY BAXTER & WOODMAN, INC.
 STATE OF ILLINOIS - PROFESSIONAL DESIGN FIRM
 LICENSE NO. - 081-00121 - EXPIRES 4/30/2009
 12/29/2008 10:53:00 AM



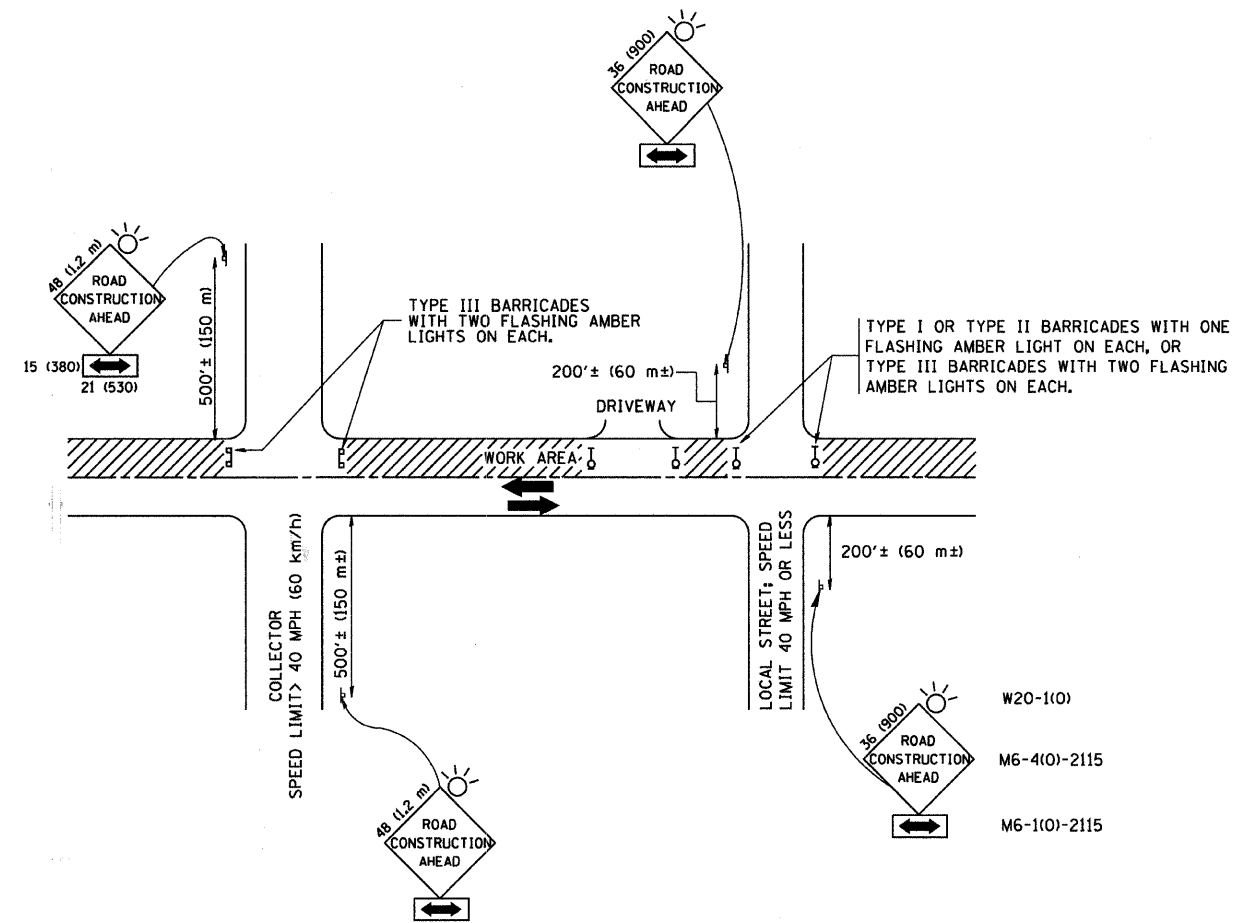
| | |
|-----------------|---------------------------------------|
| DESIGNED - JTB | REVISED - |
| DRAWN - KAR | REVISED - |
| CHECKED - TMS | REVISED - |
| DATE - 12-08-08 | FILE NAME - 061389-lighting-det-1.shd |

VILLAGE OF PARK FOREST, ILLINOIS
INDIANWOOD BOULEVARD
MONEE RD. TO BLACKHAWK DR.

STREET LIGHTING
DETAILS

SCALE: STA. TO STA.

| | | | | |
|---|----------------|--------|--------------|-----------|
| F.A. RTE. | SECTION | COUNTY | TOTAL SHEETS | SHEET NO. |
| | 09-00091-01-LT | COOK | 7 | 6 |
| CONTRACT NO. 63129 | | | | |
| FED. ROAD DIST. NO. ILLINOIS FED. AID PROJECT TCSP-061L (606) | | | | |



TRAFFIC CONTROL AND PROTECTION FOR SIDE ROADS, INTERSECTIONS, AND DRIVEWAYS

NOTES:

A. FOR NO LANE RESTRICTION ON THE SIDE ROAD OR DRIVEWAYS

1. SIDE ROAD WITH A SPEED LIMIT OF 40 MPH (60 km/h) OR LESS AS SHOWN ON THE DRAWING AND AS DIRECTED BY THE ENGINEER:
 - a) ONE ROAD CONSTRUCTION AHEAD SIGN 36 x 36 (900x900) WITH A FLASHER AND FLAG MOUNTED ON IT APPROXIMATELY 200' (60 m) IN ADVANCE OF THE MAIN ROUTE.
 - b) THE CLOSED PORTION OF THE MAIN ROUTE SHALL BE PROTECTED BY BLOCKING WITH TYPE I, TYPE II OR TYPE III BARRICADES, 1/3 OF THE CROSS SECTION OF THE CLOSED PORTION.
2. SIDE ROAD WITH A SPEED LIMIT GREATER THAN 40 MPH (60 km/h) AS SHOWN ON THE DRAWING AND AS DIRECTED BY THE ENGINEER:
 - a) ONE ROAD CONSTRUCTION AHEAD SIGN 48 x 48 (1.2 m x 1.2 m) WITH A FLASHER MOUNTED ON IT APPROXIMATELY 500' (150 m) IN ADVANCE OF THE MAIN ROUTE.
 - b) THE CLOSED PORTION OF THE MAIN ROUTE SHALL BE PROTECTED BY BLOCKING WITH TYPE III BARRICADES, 1/2 OF THE CROSS SECTION OF THE CLOSED PORTION.
3. WHEN THE SIDE ROAD LIES BETWEEN THE BEGINNING OF THE MAINLINE SIGNING AND THE WORK ZONE, A SINGLE HEADED ARROW (M6-1) SHALL BE USED IN LIEU OF THE DOUBLE HEADED ARROW (M6-4).

B. FOR A LANE CLOSURE ON A SIDE ROAD OR DRIVEWAY:

USE APPLICABLE PORTIONS OF THE TYPICAL APPLICATION OF TRAFFIC CONTROL DEVICES (STD. 701501, STD. 701606 OR THE APPROPRIATE STANDARD). THE SPACING OF SIGNS AND BARRICADES SHALL BE ADJUSTED FOR FIELD CONDITIONS AS DIRECTED BY THE ENGINEER. THE DIRECTIONAL ARROW SHALL BE COVERED OR REMOVED WHEN NO LONGER CONSISTENT WITH THE SIDE ROAD LANE CLOSURE.

C. ADVANCE WARNING SIGNS ARE TO BE OMITTED ON DRIVEWAY UNLESS OTHERWISE NOTED.

D. THE TRAFFIC CONTROL AND PROTECTION FOR SIDE ROADS, INTERSECTIONS, AND DRIVEWAYS SHALL BE INCIDENTAL TO THE COST OF SPECIFIED TRAFFIC CONTROL STANDARDS OR ITEMS.

All dimensions are in millimeters (inches) unless otherwise shown.

| | | | |
|---|-------------------------------|-------------------|------------------------------------|
| FILE NAME = W:\dststd\22x34\1010.dgn | USER NAME = gegierobt | DESIGNED - LHA | REVISED - J. OBERLE 10-18-95 |
| | | DRAWN - | REVISED - A. HOUSEH 03-06-96 |
| | PLOT SCALE = 50,000' / IN. | CHECKED - | REVISED - A. HOUSEH 10-15-96 |
| | PLOT DATE = 1/4/2008 | DATE - 06-89 | REVISED - T. RAMMACHER 01-06-00 |

STATE OF ILLINOIS
DEPARTMENT OF TRANSPORTATION

TRAFFIC CONTROL AND PROTECTION FOR
SIDE ROADS, INTERSECTIONS, AND DRIVEWAYS

SCALE: NONE SHEET NO. 1 OF 1 SHEETS STA. TO STA.

| | | | | |
|---|----------------|--------|--------------|-----------|
| F.A. RTE. | SECTION | COUNTY | TOTAL SHEETS | SHEET NO. |
| | 09-00091-01-1T | COOK | 7 | 7 |
| TC-10 | | | CONTRACT NO. | |
| FED. ROAD DIST. NO. 1 [ILLINOIS] FED. AID PROJECT | | | | |