



INDEX OF SHEETS

SHEET NO.	TITLE
1	COVER SHEET
2	INDEX OF SHEETS, STANDARDS, AND GENERAL NOTES
3	SUMMARY OF QUANTITIES AND DRIVEWAY DETAIL
4	TYPICAL SECTIONS AND HMA MIXTURE REQUIREMENTS
5-9	PROPOSED PLAN
10	BD-32 BUTT JOINTS AND HMA TAPER DETAILS
11	TC-10 TRAFFIC CONTROL AND PROTECTION FOR SIDE ROADS, INTERSECTIONS, AND DRIVEWAYS
12	TC-13 DISTRICT ONE TYPICAL PAVEMENT MARKINGS
13	TC-18 SIGNING FOR FLAGGING OPERATIONS AT WORK ZONE OPENING
14	RECESSED PAVEMENT MARKER DETAIL

LISTS OF STANDARDS

000001-05	ABBREVIATIONS, SYMBOLS AND PATTERN
406201-01	MAILBOX TURNOUTS
442201-03	CLASS C AND D PATCHES
482011-03	HMA SHLD. STRIPS/SHLDS. WITH RESURFACING OR WIDENING AND RESURFACING PROJECTS
701011-02	OFF-ROAD MOVING OPERATIONS, 2L, 2W DAY ONLY
701201-03	LANE CLOSURE, 2L, 2W, DAY ONLY, FOR SPEED >=45 MPH
701306-02	LANE CLOSURE, 2L, 2W, SLOW MOVING OPERATIONS DAY ONLY, FOR SPEEDS >= 45 MPH
701311-03	LANE CLOSURE, 2L, 2W, MOVING OPERATIONS-DAY ONLY
701901-01	TRAFFIC CONTROL DEVICES
781001-03	TYPICAL APPLICATIONS RAISED REFLECTIVE PAVEMENT MARKERS
BLR 24-2	MAILBOX TURNOUTS FOR LOCAL ROADS

GENERAL NOTES

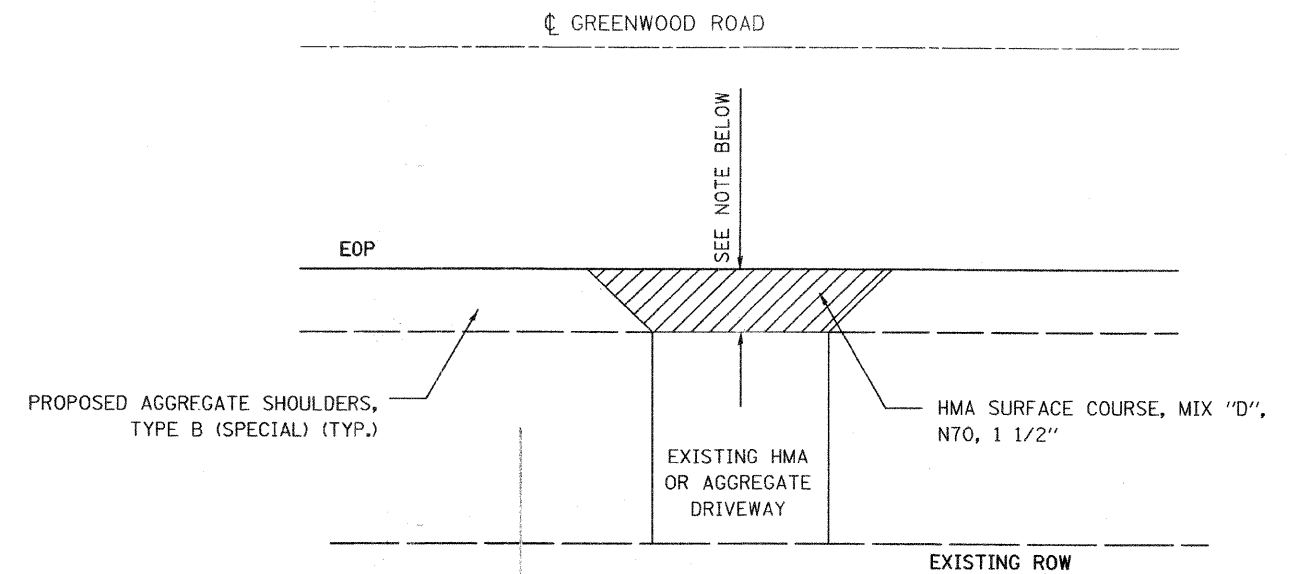
- ALL CONSTRUCTION SHALL BE DONE IN ACCORDANCE WITH THE DETAILS IN THE PLANS, THE SPECIAL PROVISIONS INCLUDED IN THE CONTRACT DOCUMENTS, AND THE LATEST EDITION OF THE FOLLOWING STATE OF ILLINOIS SPECIFICATIONS: "THE STANDARD SPECIFICATIONS FOR ROAD AND BRIDGE CONSTRUCTION" (REFERRED TO AS THE "STANDARD SPECIFICATIONS"). THE "SUPPLEMENTAL SPECIFICATIONS AND RECURRING SPECIAL PROVISIONS". THE "MANUAL ON UNIFORM TRAFFIC CONTROL DEVICES FOR STREETS AND HIGHWAYS" AND THE "MANUAL OF TEST PROCEDURES FOR MATERIALS".
- BARRICADES: THE CONTRACTOR SHALL PROVIDE AND INSTALL TWO (2) WEIGHTED SAND BAGS ON EACH TYPE I OR TYPE II BARRICADE USED FOR - ONE (1) WEIGHTED SAND BAG ACROSS EACH BOTTOM RAIL.
- ANY SIGNS THAT ARE IN CONFLICT WITH THE PROPOSED CONSTRUCTION SHALL BE REMOVED AND REPLACED IN ACCORDANCE WITH COUNTY STANDARDS AND INCLUDED IN THE COST OF THE CONTRACT.
- THE CONTRACTOR SHALL BE RESPONSIBLE FOR THE PROTECTION OF ALL UNDERGROUND OR SURFACE UTILITIES EVEN THOUGH THEY MAY NOT BE SHOWN ON THE PLANS. ANY UTILITY THAT IS DAMAGED DURING CONSTRUCTION SHALL BE REPAIRED OR REPLACED AT THE CONTRACTOR'S EXPENSE TO THE SATISFACTION OF THE ENGINEER OR UTILITY COMPANY.
- UTILITY LOCATIONS HAVE NOT BEEN SHOWN ON THE PLANS. THE CONTRACTOR SHALL CALL "J.U.L.I.E." AT 800-892-0123 OR 811 FOR FIELD LOCATIONS OF BURRIED ELECTRIC, PHONE, AND GAS FACILITIES PRIOR TO BEGINNING CONSTRUCTION. (48-HOUR NOTIFICATION REQUIRED)
- THE CONTRACTOR SHALL COORDINATE CONSTRUCTION ACTIVITIES WITH UTILITY COMPANIES AND THE ENGINEER.
- THE CONTRACTOR SHALL NOTIFY IDOT BUREAU OF MATERIALS (PHONE (847)-705-4337) AT LEAST 24 HOURS PRIOR TO THE PLACEMENT OF HMA OR CONCRETE.
- SAW CUTTING OF PAVEMENTS, SHOULDERS, ETC. SHALL BE TO FULL DEPTH AND SHALL RESULT IN A CLEAN, STRAIGHT EDGE ON THE PORTION REMAINING. ALL SAWCUTTING SHALL BE CONSIDERED INCLUDED IN THE COST OF THE CONTRACT.
- ALL MAILBOXES IMPACTED AS PART OF THE PROJECT, PER SECTION 107.20 OF THE IDOT STANDARD SPECIFICATIONS, SHALL BE RELOCATED AND WILL NOT BE PAID FOR SEPARATELY, BUT SHALL BE CONSIDERED AS INCLUDED IN THE COST OF THE CONTRACT.
- THE CONTRACTOR SHALL MAINTAIN ACCESS TO RESIDENTS DRIVEWAY AT ALL TIMES.
- THE CONTRACTOR SHALL UTILIZE A MECHANICAL SWEEPER TO CLEAN STREETS AFFECTED BY CONTRACTOR'S OPERATIONS, INCLUDING HAUL ROUTE, AT LEASE TWICE PER WEEK AND ADDITIONALLY AS DIRECTED BY THE ENGINEER. THIS WORK SHALL BE INCLUDED IN THE COST OF CONSTRUCTION.
- THE CONTRACTOR SHALL BE RESPONSIBLE FOR DISPOSING OF ALL SURPLUS MATERIALS RELATED TO THE JOB AFTER COMPLETING THE PAVING PROJECT.
- THE THERMOPLASTIC PAVEMENT MARKINGS MAY BE ADJUSTED FROM THE PLANS BY THE ENGINEER.

FILE NAME =	USER NAME = #USER#	DESIGNED -	REVISED -	<b>McHENRY COUNTY DIVISION OF TRANSPORTATION GREENWOOD ROAD LAPP IMPROVEMENT</b>	<b>INDEX OF SHEETS, STATE STANDARDS, AND GENERAL NOTES</b>	F.A.S. RTE.	SECTION	COUNTY	TOTAL SHEETS	SHEET NO.	
#FILE#		DRAWN -	REVISED -			25	09-00361-00-RS	McHENRY	14	2	
	PLOT SCALE = #SCALE#	CHECKED -	REVISED -			CONTRACT NO. 63131					
	PLOT DATE = #DATE#	DATE -	REVISED -			SCALE:	SHEET NO. OF SHEETS	STA.	TO STA.	FED. ROAD DIST. NO.	ILLINOIS FED. AID PROJECT

SUMMARY OF QUANTITIES				TOTAL QUANTITY (1000-2A)
CODE NO.	ITEM DESCRIPTION	UNIT		
40600100	BITUMINOUS MATERIALS (PRIME COAT)	GALLON		6,964
40600300	AGGREGATE PRIME COAT	TON		65
40600635	LEVELING BINDER (MACHINE METHOD), N70	TON		500
40600895	CONSTRUCTING TEST STRIP	EACH		2
40603085	HOT-MIX ASPHALT BINDER COURSE, IL-19.0, N70	TON		6,438
40603340	HOT-MIX ASPHALT SURFACE COURSE, MIX "D", N70	TON		3,656
44000196	HOT-MIX ASPHALT SURFACE REMOVAL, SPECIAL	SQ YD		43,528
44201723	CLASS D PATCHES, TYPE IV, 6 INCH	SQ YD		250
67100100	MOBILIZATION	L SUM		1
70101700	TRAFFIC CONTROL & PROTECTION	L SUM		1
* 78000200	THERMOPLASTIC PAVEMENT MARKING - LINE 4"	FOOT		42,708
X7030200	SHORT-TERM PAVEMENT MARKING (SPECIAL)	FOOT		11,482
XX002870	AGGREGATE SHOULDERS, TYPE B (SPECIAL)	SQ YD		10,525
* XX006257	RECESSED REFLECTIVE PAVEMENT MARKER	EACH		307
Δ Z0076600	TRAINEES	HOUR		500
XX001813	ROAD CORING (SPECIAL)	FOOT		31,576

\* SPECIALTY ITEMS

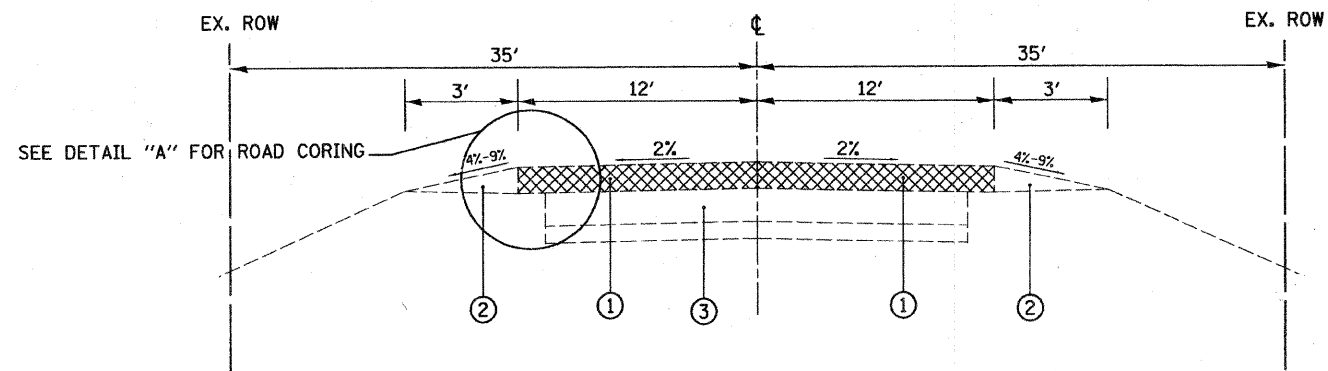
Δ 1080



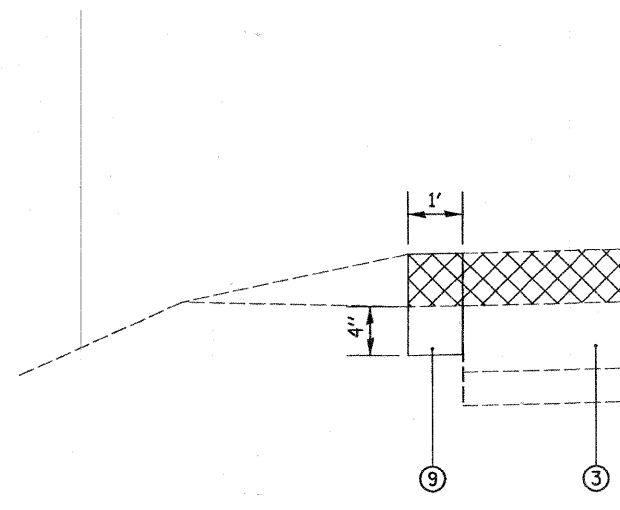
**DRIVEWAY DETAIL**

**NOTE:** 3' MAX. WHEN MATCHING EXISTING DRIVEWAY OR WHATEVER DIMENSION IS NECESSARY TO CREATE AND MAINTAIN A SATISFACTORY RIDING CONDITION. VARIABLE DIMENSIONS ARE SUBJECT TO ENGINEER APPROVAL.

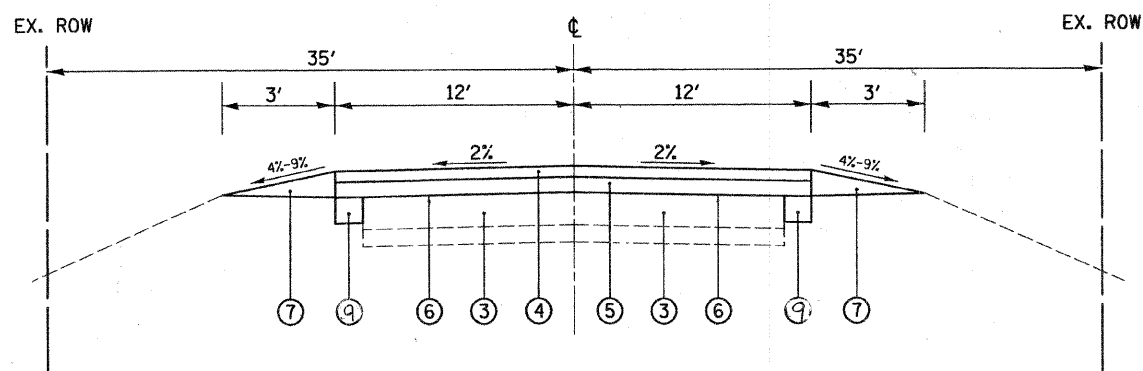
FILE NAME =	USER NAME = #USER#	DESIGNED -	REVISED -	<b>McHENRY COUNTY DIVISION OF TRANSPORTATION GREENWOOD ROAD LAPP IMPROVEMENT</b>	<b>SUMMARY OF QUANTITIES AND DRIVEWAY DETAIL</b>	F.A.S. RTE.	SECTION	COUNTY	TOTAL SHEETS	SHEET NO.	
#FILE#		DRAWN -	REVISED -			25	09-00361-00-RS	McHENRY	14	3	
		CHECKED -	REVISED -			CONTRACT NO. 63131					
		DATE -	REVISED -			SCALE:	SHEET NO.	OF	SHEETS	STA.	TO STA.



**EXISTING TYPICAL SECTION  
GREENWOOD ROAD**



**DETAIL "A"**



**PROPOSED TYPICAL SECTION  
GREENWOOD ROAD**



— PROPOSED HOT-MIX ASPHALT SURFACE REMOVAL, (SPECIAL), 3 3/4"

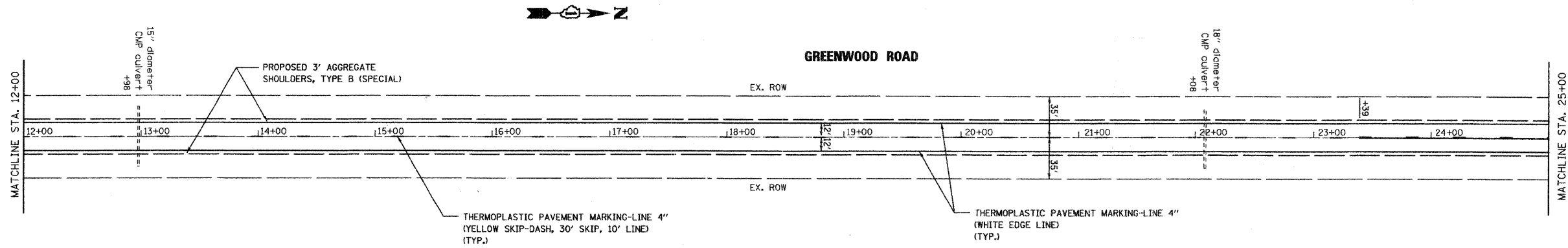
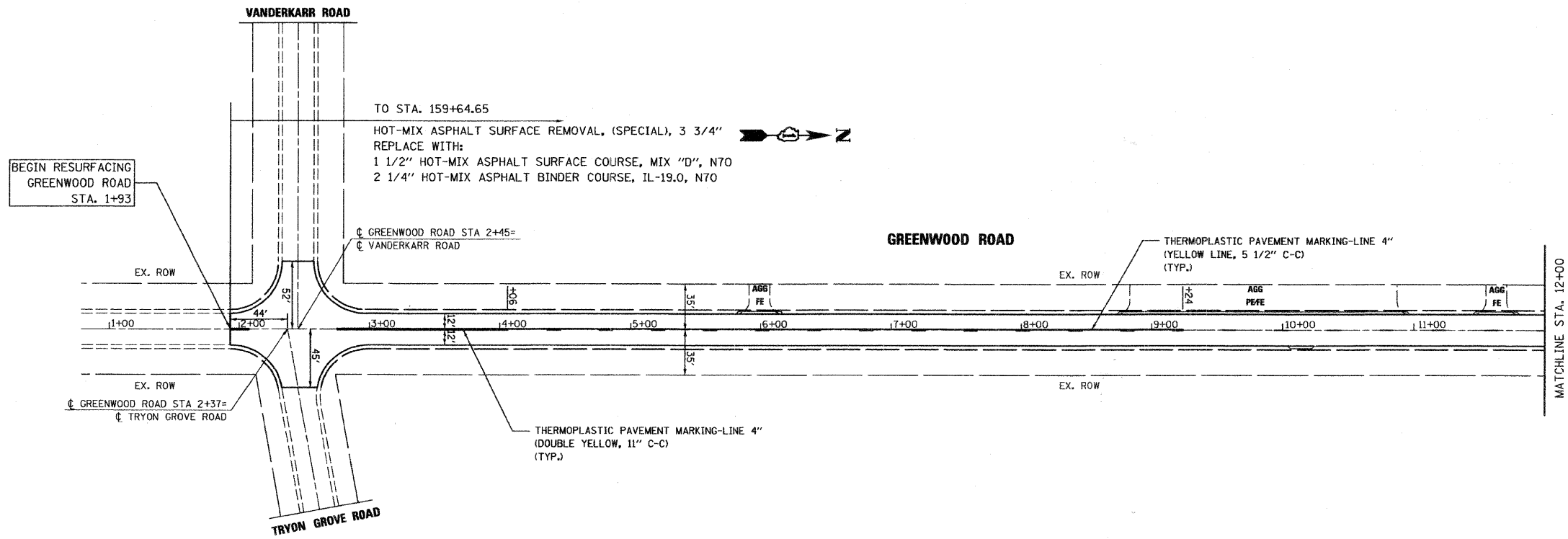
**LEGEND**

- ① HOT-MIX ASPHALT SURFACE REMOVAL, (SPECIAL), 3 3/4"
- ② EXISTING AGGREGATE SHOULDERS
- ③ EXISTING HMA BASE COURSE
- ④ PROPOSED HOT-MIX ASPHALT SURFACE COURSE, MIX D, N70, 1 1/2"
- ⑤ PROPOSED HOT-MIX ASPHALT BINDER COURSE, IL-19.0, N70, 2 1/4"
- ⑥ PROPOSED BITUMINOUS MATERIALS (PRIME COAT) AND AGGREGATE (PRIME COAT)
- ⑦ PROPOSED AGGREGATE SHOULDERS, TYPE B, (SPECIAL)
- ⑧ PROPOSED LEVELING BINDER (MACHINE METHOD), N70 (AS NECESSARY FOR SLOPE CORRECTION)
- ⑨ PROPOSED ROAD CORING (SPECIAL), HMA BINDER COURSE

HOT-MIX ASPHALT MIXTURE REQUIREMENTS		
MIXTURE TYPE	AC TYPE	AIR VOIDS
PAVEMENT RESURFACING:	PG 64-22	4% @ 70 GYR.
HOT-MIX ASPHALT SURFACE COURSE, MIX "D", N70 (IL 9.5 mm)	PG 64-22 •	4% @ 70 GYR.
HOT-MIX ASPHALT BINDER COURSE, IL-19.0, N70	PG 64-22 •	4% @ 70 GYR.
SLOPE CORRECTION:		
LEVELING BINDER (MACHINE METHOD), N70 (IL 9.5 mm)	PG 64-22 •	4% @ 70 GYR.
PATCHING:		
CLASS D PATCHES (HMA BINDER IL-19mm)	PG 64-22 •	4% @ 70 GYR.

THE UNIT WEIGHT USED TO CALCULATE ALL HMA SURFACE MIXTURE QUANTITIES IS 112 LBS/SQ YD/IN.  
• WHEN RAP EXCEEDS 20%, THE NEW ASPHALT BINDER IN THE MIX SHALL BE PG 58-22.

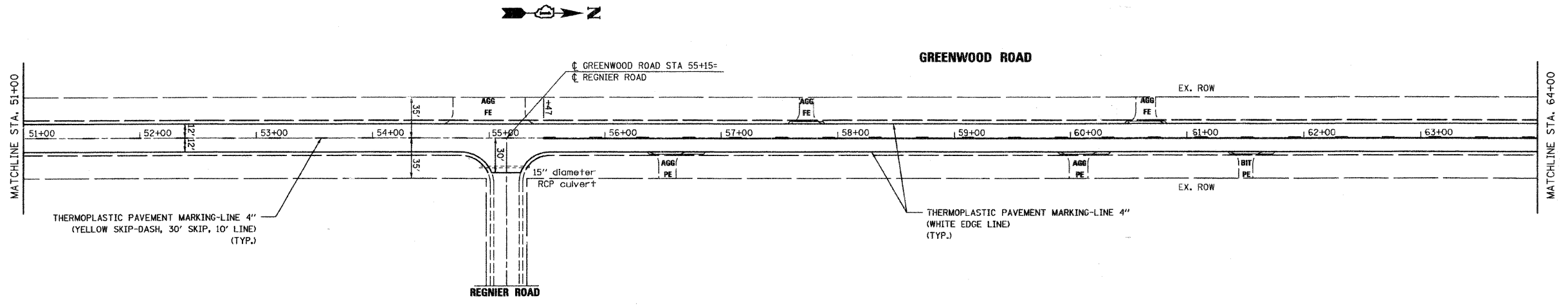
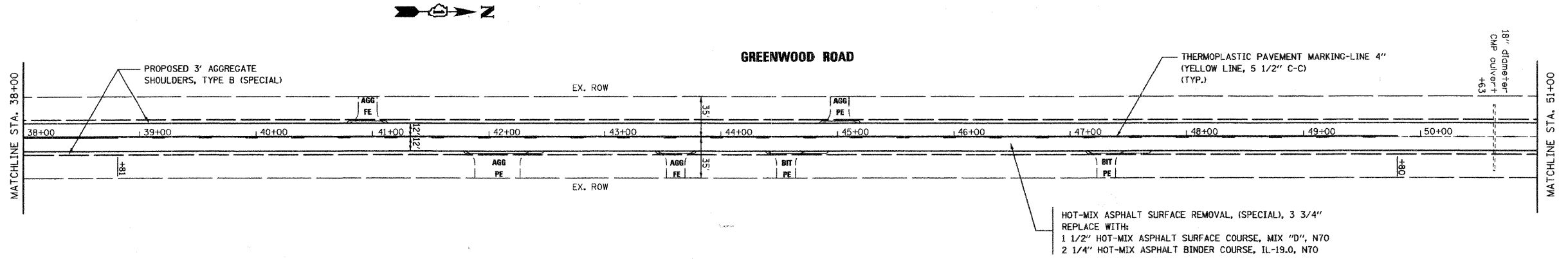
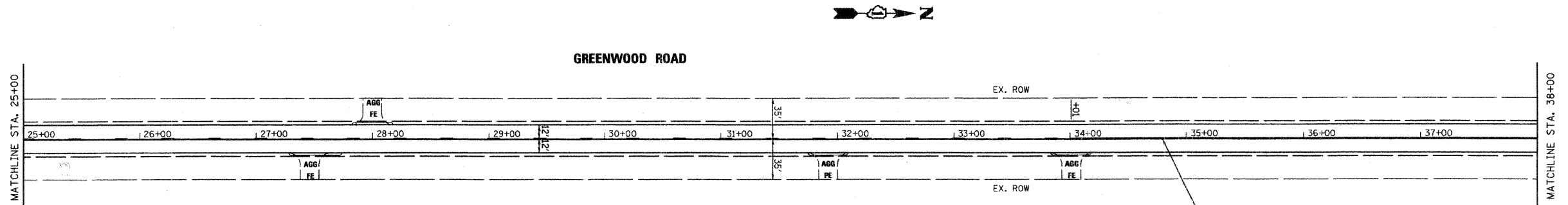
FILE NAME =	USER NAME = #USER#	DESIGNED -	REVISED -	<b>MCHENRY COUNTY DIVISION OF TRANSPORTATION GREENWOOD ROAD LAPP IMPROVEMENT</b>	<b>TYPICAL SECTIONS</b>			F.A.S. RTE.	SECTION	COUNTY	TOTAL SHEETS	SHEET NO.			
#FILEL#		DRAWN -	REVISED -		SCALE: NTS	SHEET NO.	OF	SHEETS	STA.	TO STA.	25	09-00361-00-RS	MCHENRY	14	4
		CHECKED -	REVISED -		CONTRACT NO. 63131										
		DATE -	REVISED -		FED. ROAD DIST. NO. ILLINOIS FED. AID PROJECT										



**NOTES:**

- 1) FOR PAVEMENT MARKING DETAILS, FOLLOW DISTRICT 1 STANDARD TC-13 "DISTRICT ONE TYPICAL PAVEMENT MARKINGS", WHERE APPLICABLE.
- 2) RECESSED REFLECTIVE PAVEMENT MARKERS SHALL FOLLOW STANDARD 781001-03 TYPICAL APPLICATIONS RAISED REFLECTIVE PAVEMENT MARKERS. SEE "RECESSED PAVEMENT MARKER DETAIL" FOR INSTALLATION.

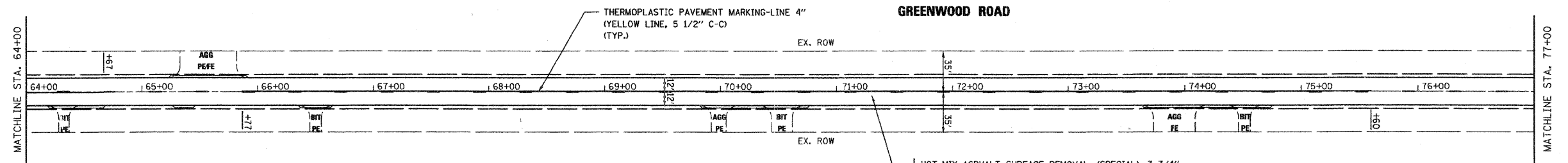
FILE NAME = #FILE#	USER NAME = #USER#	DESIGNED -	REVISED -	<b>McHENRY COUNTY DIVISION OF TRANSPORTATION GREENWOOD ROAD LAPP IMPROVEMENT</b>	<b>PROPOSED PLAN</b>			F.A.S RTE.	SECTION	COUNTY	TOTAL SHEETS	SHEET NO.	
	PLOT SCALE = #SCALE#	DRAWN -	REVISED -		25	09-00361-00-RS	McHENRY	14	5				
	PLOT DATE = #DATE#	CHECKED -	REVISED -		SCALE: 1" = 50'			SHEET NO. 1 OF 5 SHEETS			STA. 1+00 TO STA. 25+00		
		DATE -	REVISED -					FED. ROAD DIST. NO.			ILEHNDISD PROJECT: M-9003 (183)		
				<b>CONTRACT NO. 63131</b>									



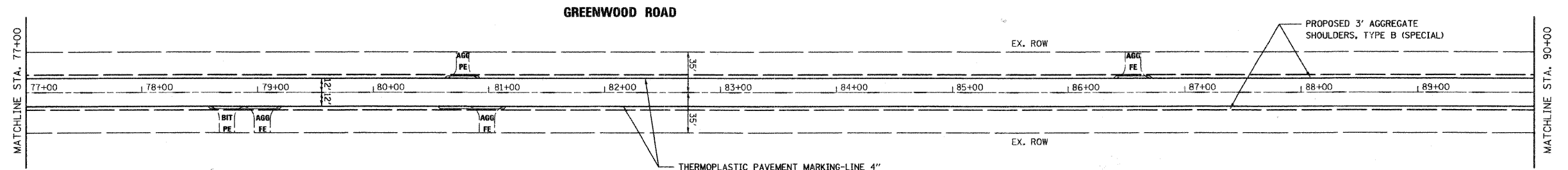
**NOTES:**

- 1) FOR PAVEMENT MARKING DETAILS, FOLLOW DISTRICT 1 STANDARD TC-13 "DISTRICT ONE TYPICAL PAVEMENT MARKINGS", WHERE APPLICABLE.
- 2) RECESSED REFLECTIVE PAVEMENT MARKERS SHALL FOLLOW STANDARD 781001-03 TYPICAL APPLICATIONS RAISED REFLECTIVE PAVEMENT MARKERS. SEE "RECESSED PAVEMENT MARKER DETAIL" FOR INSTALLATION.

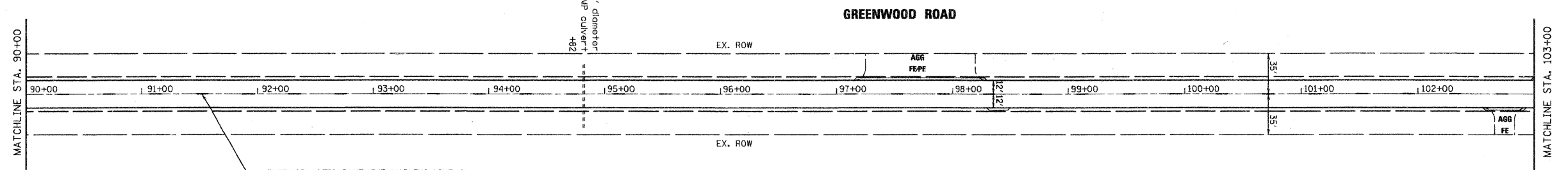
FILE NAME = #FILE#	USER NAME = #USER#	DESIGNED -	REVISED -	<b>McHENRY COUNTY DIVISION OF TRANSPORTATION GREENWOOD ROAD LAPP IMPROVEMENT</b>	<b>PROPOSED PLAN</b>		F.A.S. RTE.	SECTION	COUNTY	TOTAL SHEETS	SHEET NO.	
		DRAWN -	REVISED -		SCALE: 1"=50'	SHEET NO. 2 OF 5 SHEETS	STA. 25+00 TO STA. 64+00	25	09-00361-00-RS	McHENRY	14	6
		CHECKED -	REVISED -								CONTRACT NO. 63131	
		DATE -	REVISED -								FED. ROAD DIST. NO. ILLINOIS FED. AID PROJECT	



HOT-MIX ASPHALT SURFACE REMOVAL, (SPECIAL), 3 3/4"  
 REPLACE WITH:  
 1 1/2" HOT-MIX ASPHALT SURFACE COURSE, MIX "D", N70  
 2 1/4" HOT-MIX ASPHALT BINDER COURSE, IL-19.0, N70



THERMOPLASTIC PAVEMENT MARKING-LINE 4"  
 (WHITE EDGE LINE)  
 (TYP.)



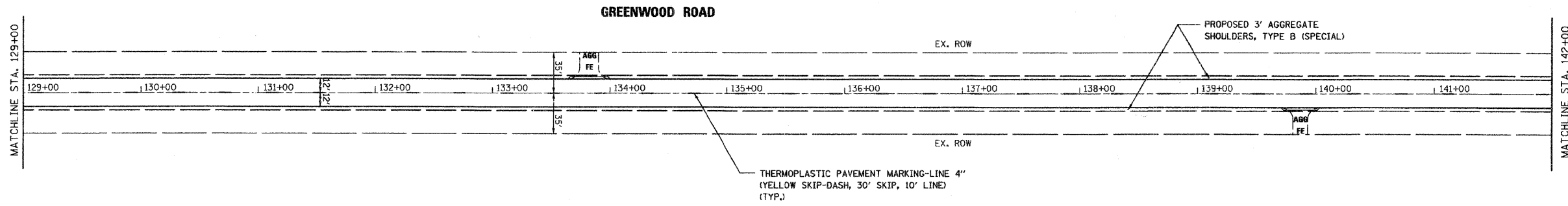
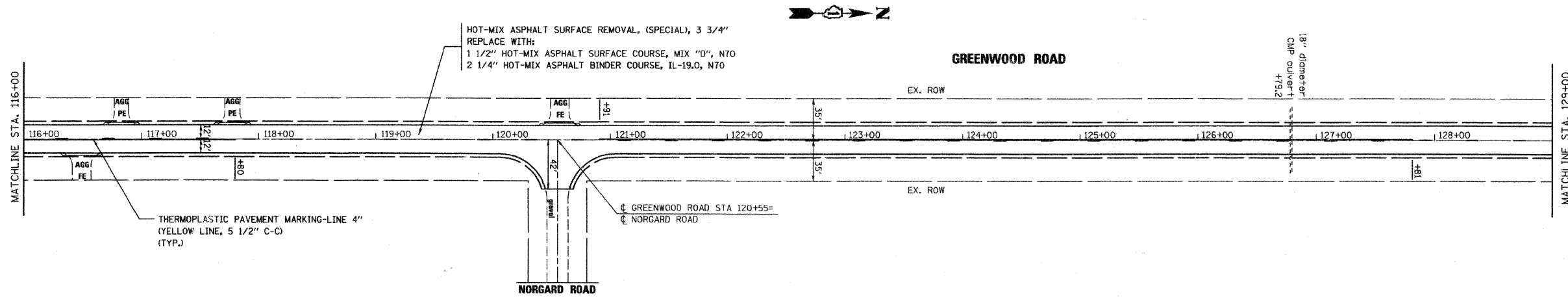
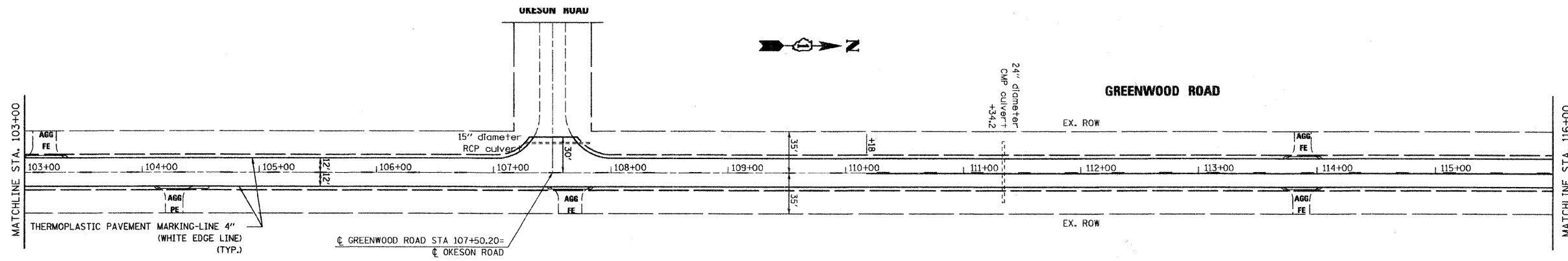
THERMOPLASTIC PAVEMENT MARKING-LINE 4"  
 (YELLOW SKIP-DASH, 30' SKIP, 10' LINE)  
 (TYP.)

**NOTES:**

- 1) FOR PAVEMENT MARKING DETAILS, FOLLOW DISTRICT 1 STANDARD TC-13 "DISTRICT ONE TYPICAL PAVEMENT MARKINGS", WHERE APPLICABLE.
- 2) RECESSED REFLECTIVE PAVEMENT MARKERS SHALL FOLLOW STANDARD 781001-03 TYPICAL APPLICATIONS RAISED REFLECTIVE PAVEMENT MARKERS. SEE "RECESSED PAVEMENT MARKER DETAIL" FOR INSTALLATION.

FILE NAME =	USER NAME = #USER#	DESIGNED -	REVISED -	<b>McHENRY COUNTY DIVISION OF TRANSPORTATION GREENWOOD ROAD LAPP IMPROVEMENT</b>	<b>PROPOSED PLAN</b>			F.A.S. RTE.	SECTION	COUNTY	TOTAL SHEETS	SHEET NO.
#FILEL#		DRAWN -	REVISED -		SCALE: 1"=50'	SHEET NO. 3 OF 5 SHEETS	STA. 64+00 TO STA. 103+00	25	09-00361-00-RS	McHENRY	14	7
	PLOT SCALE = #SCALE#	CHECKED -	REVISED -					CONTRACT NO. 63131				
	PLOT DATE = #DATE#	DATE -	REVISED -					FED. ROAD DIST. NO. [ILLINOIS] FED. AID PROJECT				



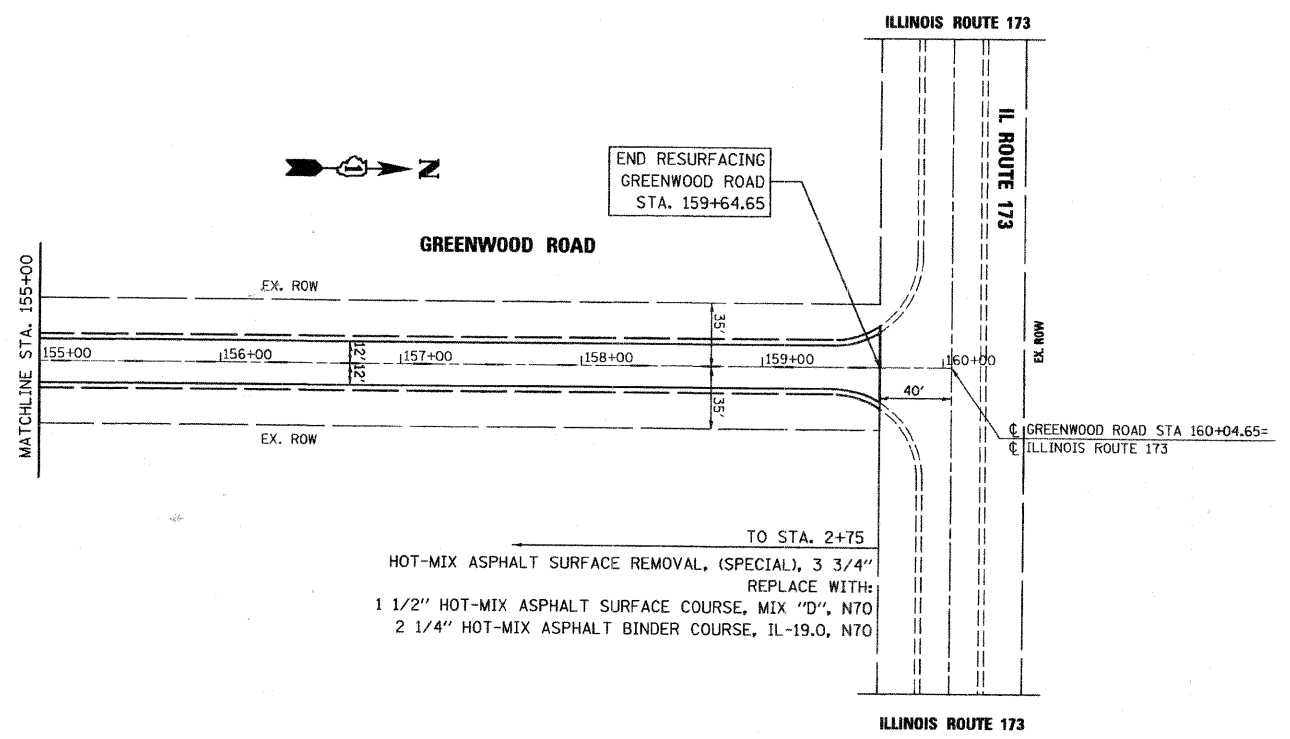
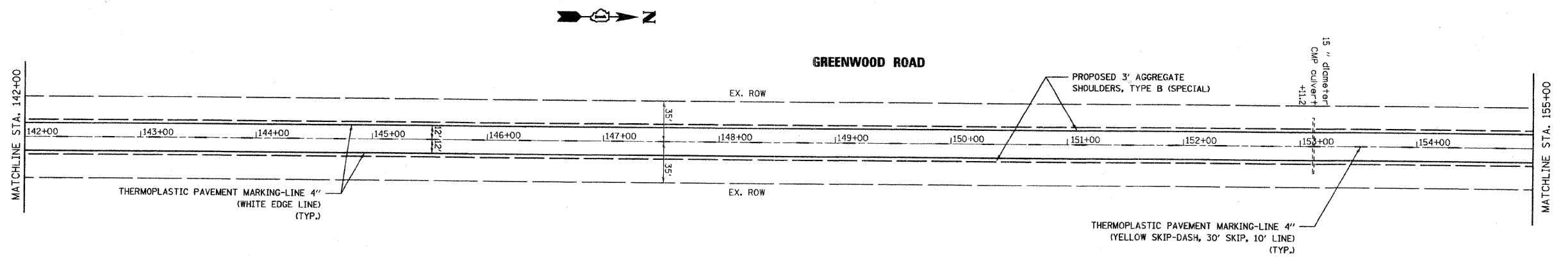


**NOTES:**

- 1) FOR PAVEMENT MARKING DETAILS, FOLLOW DISTRICT 1 STANDARD TC-13 "DISTRICT ONE TYPICAL PAVEMENT MARKINGS", WHERE APPLICABLE.
- 2) RECESSED REFLECTIVE PAVEMENT MARKERS SHALL FOLLOW STANDARD 781001-03 TYPICAL APPLICATIONS RAISED REFLECTIVE PAVEMENT MARKERS. SEE "RECESSED PAVEMENT MARKER DETAIL" FOR INSTALLATION.

FILE NAME = #FILE#	USER NAME = #USER#	DESIGNED -	REVISED -	<b>McHENRY COUNTY DIVISION OF TRANSPORTATION GREENWOOD ROAD LAPP IMPROVEMENT</b>	<b>PROPOSED PLAN</b>		F.A.S RTE. 25	SECTION 09-00361-00-RS	COUNTY McHENRY	TOTAL SHEETS 14	SHEET NO. 8	
	PLOT SCALE = #SCALE#	CHECKED -	REVISED -		SCALE: 1"=50'	SHEET NO. 4 OF 5 SHEETS	STA. 103+00 TO STA. 142+00	CONTRACT NO. 63131		FED. ROAD DIST. NO. ILLINOIS FED. AID PROJECT		
	PLOT DATE = #DATE#	DATE -	REVISED -									



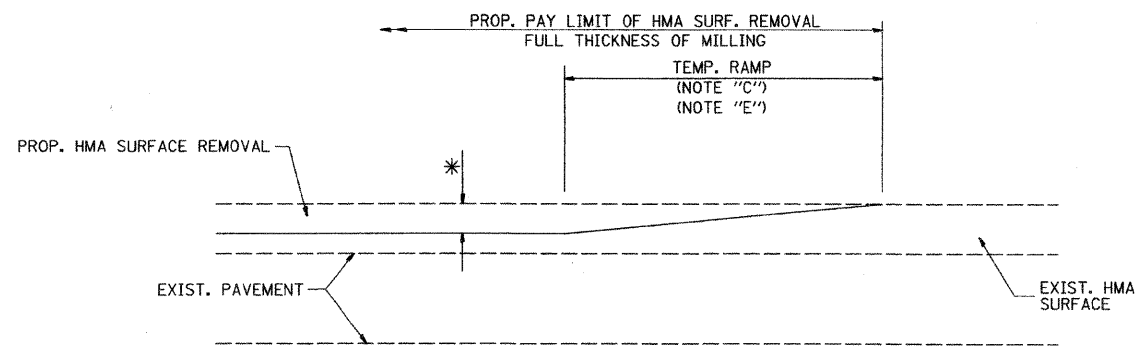


TO STA. 2+75  
 HOT-MIX ASPHALT SURFACE REMOVAL, (SPECIAL), 3 3/4"  
 REPLACE WITH:  
 1 1/2" HOT-MIX ASPHALT SURFACE COURSE, MIX "D", N70  
 2 1/4" HOT-MIX ASPHALT BINDER COURSE, IL-19.0, N70

**NOTES:**

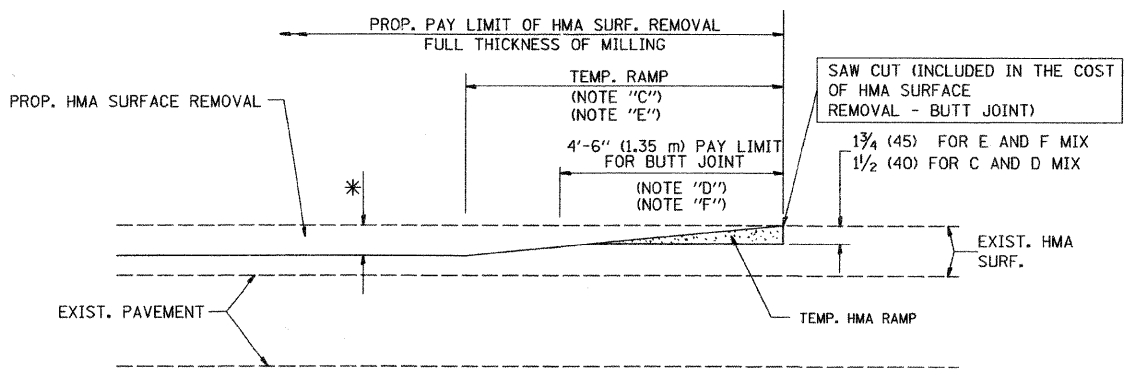
- 1) FOR PAVEMENT MARKING DETAILS, FOLLOW DISTRICT 1 STANDARD TC-13 "DISTRICT ONE TYPICAL PAVEMENT MARKINGS", WHERE APPLICABLE.
- 2) RECESSED REFLECTIVE PAVEMENT MARKERS SHALL FOLLOW STANDARD 781001-03 TYPICAL APPLICATIONS RAISED REFLECTIVE PAVEMENT MARKERS. SEE "RECESSED PAVEMENT MARKER DETAIL" FOR INSTALLATION.

FILE NAME =	USER NAME = #USER#	DESIGNED -	REVISED -	<b>McHENRY COUNTY DIVISION OF TRANSPORTATION GREENWOOD ROAD LAPP IMPROVEMENT</b>	<b>PROPOSED PLAN</b>	F.A.S. RTE.	SECTION	COUNTY	TOTAL SHEETS	SHEET NO.	
#FILE#		DRAWN -	REVISED -			25	09-00361-00-RS	McHENRY	14	9	
		CHECKED -	REVISED -			CONTRACT NO. 63131					
		DATE -	REVISED -			FED. ROAD DIST. NO. [ILLINOIS] FED. AID PROJECT					
					SCALE: 1"=50'	SHEET NO. 5 OF 5 SHEETS		STA. 142+00 TO STA. 160+04.65			



MILLED TEMPORARY RAMP  
(FOR BUTT JOINT AND HMA TAPER SEE DETAIL BELOW)

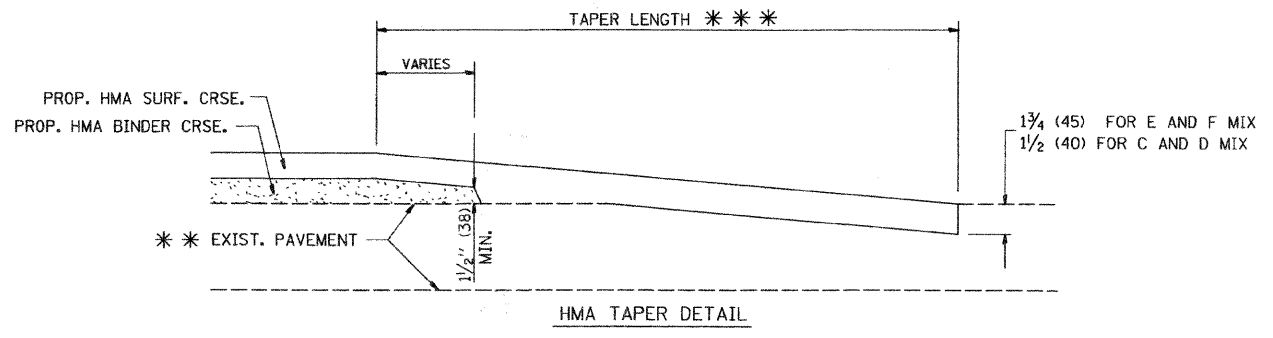
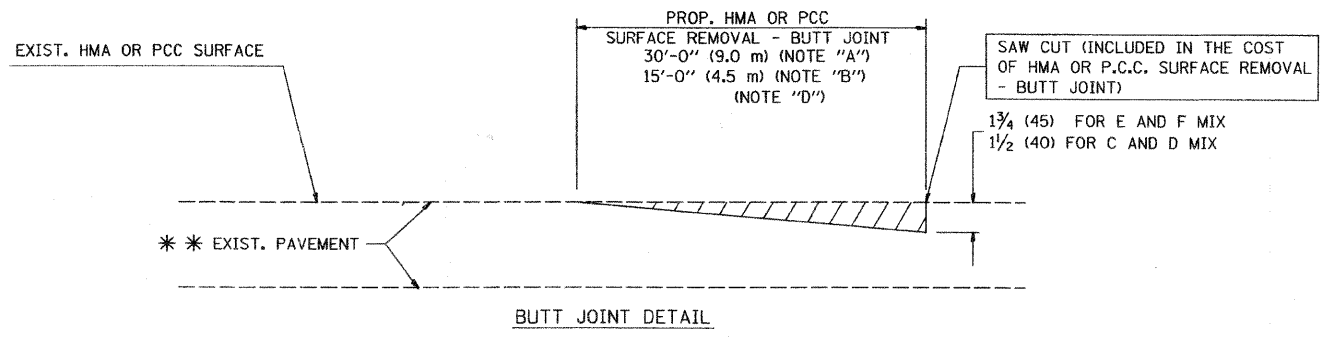
**OPTION 1**



HMA CONSTRUCTED TEMPORARY RAMP  
(FOR BUTT JOINT AND HMA TAPER SEE DETAIL BELOW)

**OPTION 2**

**TYPICAL TEMPORARY RAMP**



**TYPICAL BUTT JOINT AND HMA TAPER FOR RESURFACING ONLY**

\*\*\* PC CONCRETE, HMA OR HMA RESURFACED PAVEMENT.

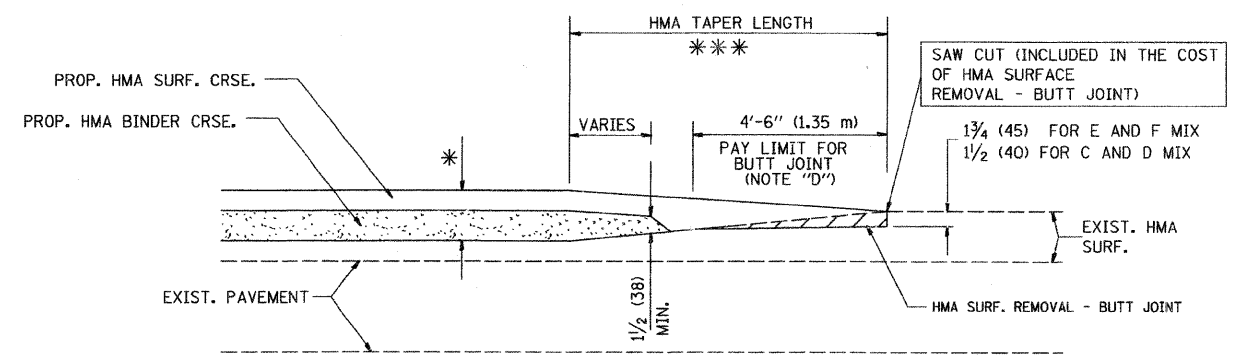
**NOTES**

- A: MAINLINE ROADWAYS AND MAJOR SIDE ROADS.
  - B: MINOR SIDE ROADS.
  - C: THE TEMP. RAMP SHALL BE CONSTRUCTED IMMEDIATELY UPON REMOVAL OF THE EXISTING HMA SURFACE.
  - D: THE BUTT JOINT SHALL BE CONSTRUCTED IMMEDIATELY PRIOR TO PLACING THE PROPOSED HMA COURSES.
  - E: TAPER THE TEMP. RAMP AT A RATE OF 3'-0" (900 mm) PER 1 INCH (25 mm) OF MILLING THICKNESS.
  - F: INSTALLATION AND REMOVAL OF THE 4'-6" (1.35 m) TEMP. RAMP IS INCLUDED IN COST OF HMA SURFACE REMOVAL - BUTT JOINT
  - G: SEE ARTICLE 406.08 AND 406.14 OF THE STANDARD SPECIFICATIONS FOR "HMA AND/OR PCC SURFACE REMOVAL, BUTT JOINT".
- \* SEE TYPICAL SECTIONS FOR MILLING THICKNESS.
- \*\*\* 20'-0" (6.1 m) PER 1 (25) RESURFACING (NOTE "A")  
10'-0" (3.0 m) PER 1 (25) RESURFACING (NOTE "B")

**BASIS OF PAYMENT:**

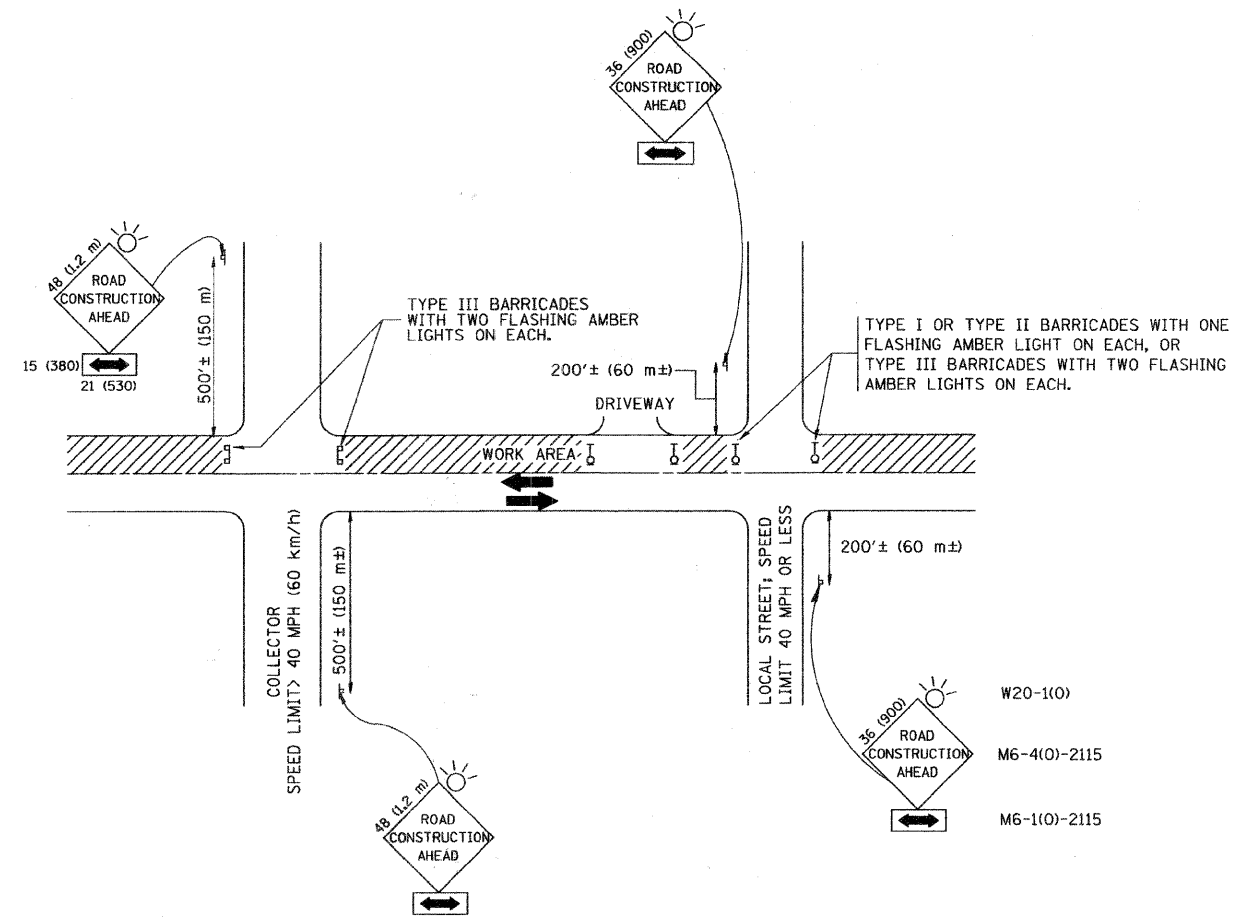
THE BUTT JOINT WILL BE PAID FOR AT THE CONTRACT UNIT PRICE PER SQUARE YARD (SQUARE METER) FOR "HOT-MIX ASPHALT SURFACE REMOVAL - BUTT JOINT" OR FOR "PORTLAND CEMENT CONCRETE SURFACE REMOVAL - BUTT JOINT".

ALL DIMENSIONS ARE IN INCHES (MILLIMETERS) UNLESS OTHERWISE SHOWN.



**TYPICAL BUTT JOINT AND HMA TAPER FOR MILLING AND RESURFACING**

FILE NAME = #FILE#	USER NAME = #USER#	DESIGNED - M. DE YONG	REVISED - R. SHAH 10-25-94	<b>STATE OF ILLINOIS DEPARTMENT OF TRANSPORTATION</b>	<b>BUTT JOINT AND HMA TAPER DETAILS</b>		F.A.S. RTE. 25	SECTION 09-00361-0G-RS	COUNTY McHENRY	TOTAL SHEETS 14	SHEET NO. 10	
		DRAWN -	REVISED - A. ABBAS 03-21-97		SCALE: NONE	SHEET NO. 1 OF 1 SHEETS	STA.	TO STA.	<b>BD400-05 BD32</b>		CONTRACT NO. 63131	
		PLOT SCALE = #SCALE#	REVISED - M. GOMEZ 04-06-01		FED. ROAD DIST. NO. 1 ILLINOIS FED. AID PROJECT							
		PLOT DATE = #DATE#	DATE - 06-13-90		REVISED - R. BORO 01-01-07							



### TRAFFIC CONTROL AND PROTECTION FOR SIDE ROADS, INTERSECTIONS, AND DRIVEWAYS

#### NOTES:

##### A. FOR NO LANE RESTRICTION ON THE SIDE ROAD OR DRIVEWAYS

- SIDE ROAD WITH A SPEED LIMIT OF 40 MPH (60 km/h) OR LESS AS SHOWN ON THE DRAWING AND AS DIRECTED BY THE ENGINEER:
  - ONE ROAD CONSTRUCTION AHEAD SIGN 36 x 36 (900x900) WITH A FLASHER AND FLAG MOUNTED ON IT APPROXIMATELY 200' (60 m) IN ADVANCE OF THE MAIN ROUTE.
  - THE CLOSED PORTION OF THE MAIN ROUTE SHALL BE PROTECTED BY BLOCKING WITH TYPE I, TYPE II OR TYPE III BARRICADES, 1/3 OF THE CROSS SECTION OF THE CLOSED PORTION.
- SIDE ROAD WITH A SPEED LIMIT GREATER THAN 40 MPH (60 km/h) AS SHOWN ON THE DRAWING AND AS DIRECTED BY THE ENGINEER:
  - ONE ROAD CONSTRUCTION AHEAD SIGN 48 x 48 (1.2 m x 1.2 m) WITH A FLASHER MOUNTED ON IT APPROXIMATELY 500' (150 m) IN ADVANCE OF THE MAIN ROUTE.
  - THE CLOSED PORTION OF THE MAIN ROUTE SHALL BE PROTECTED BY BLOCKING WITH TYPE III BARRICADES, 1/2 OF THE CROSS SECTION OF THE CLOSED PORTION.
- WHEN THE SIDE ROAD LIES BETWEEN THE BEGINNING OF THE MAINLINE SIGNING AND THE WORK ZONE, A SINGLE HEADED ARROW (M6-1) SHALL BE USED IN LIEU OF THE DOUBLE HEADED ARROW (M6-4).

##### B. FOR A LANE CLOSURE ON A SIDE ROAD OR DRIVEWAY:

- USE APPLICABLE PORTIONS OF THE TYPICAL APPLICATION OF TRAFFIC CONTROL DEVICES (STD. 701501, STD. 701606 OR THE APPROPRIATE STANDARD). THE SPACING OF SIGNS AND BARRICADES SHALL BE ADJUSTED FOR FIELD CONDITIONS AS DIRECTED BY THE ENGINEER. THE DIRECTIONAL ARROW SHALL BE COVERED OR REMOVED WHEN NO LONGER CONSISTENT WITH THE SIDE ROAD LANE CLOSURE.
- C. ADVANCE WARNING SIGNS ARE TO BE OMITTED ON DRIVEWAY UNLESS OTHERWISE NOTED.
- D. THE TRAFFIC CONTROL AND PROTECTION FOR SIDE ROADS, INTERSECTIONS, AND DRIVEWAYS SHALL BE INCIDENTAL TO THE COST OF SPECIFIED TRAFFIC CONTROL STANDARDS OR ITEMS.

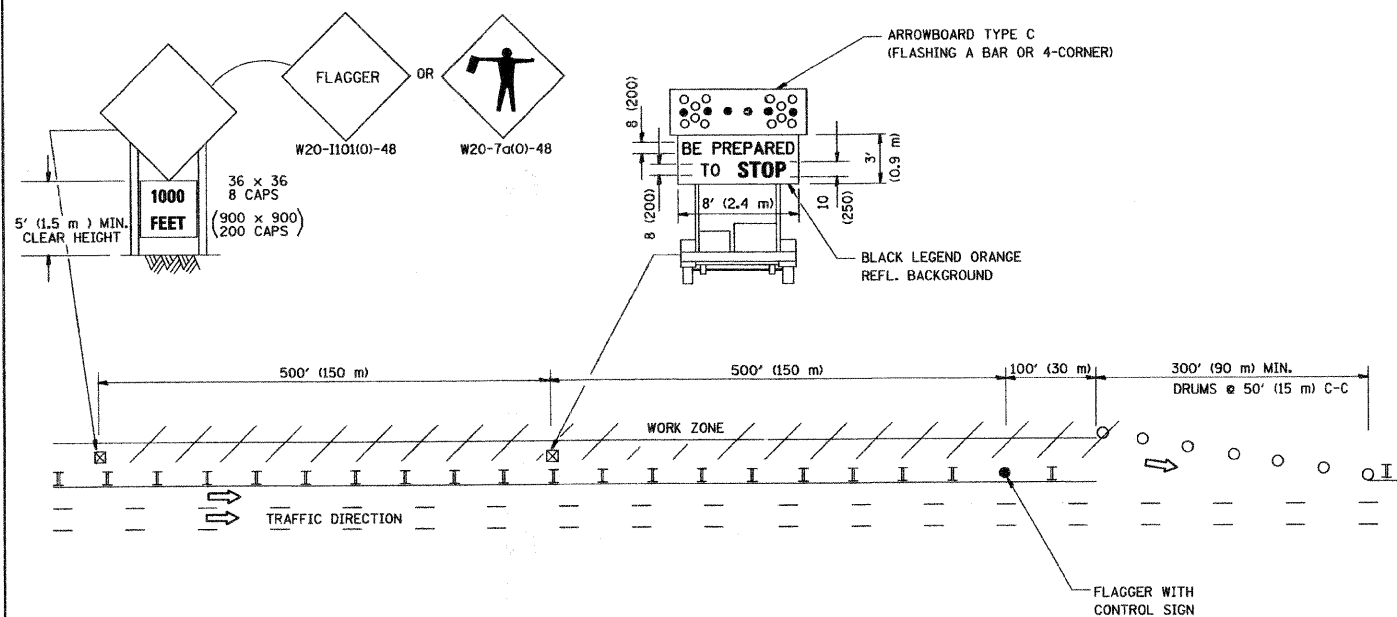
All dimensions are in millimeters (inches) unless otherwise shown.

FILE NAME =	USER NAME = #USER*	DESIGNED - LHA	REVISED - J. OBERLE 10-18-95	<b>STATE OF ILLINOIS DEPARTMENT OF TRANSPORTATION</b>	<b>TRAFFIC CONTROL AND PROTECTION FOR SIDE ROADS, INTERSECTIONS, AND DRIVEWAYS</b>		F.A.S. RTE.	SECTION	COUNTY	TOTAL SHEETS	SHEET NO.	
#FILEL#		DRAWN -	REVISED - A. HOUSEH 03-06-96		SCALE: NONE	SHEET NO. 1 OF 1 SHEETS	STA.	25	09-00361-00-RS	McHENRY	14	11
		CHECKED -	REVISED - A. HOUSEH 10-15-96					<b>TC-10</b>		<b>CONTRACT NO. 63131</b>		
		DATE - 06-89	REVISED - T. RAMMACHER 01-06-00					FED. ROAD DIST. NO. 1 [ILLINOIS] FED. AID PROJECT				

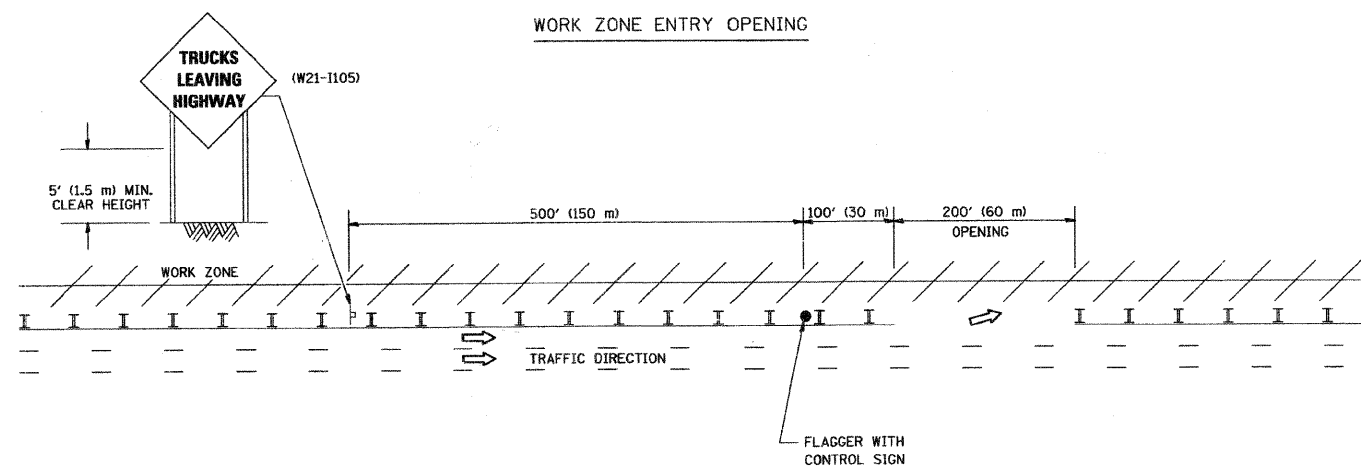


SIGNING FOR FLAGGING OPERATIONS AT WORK ZONE OPENINGS

WORK ZONE EXIT OPENING



WORK ZONE ENTRY OPENING

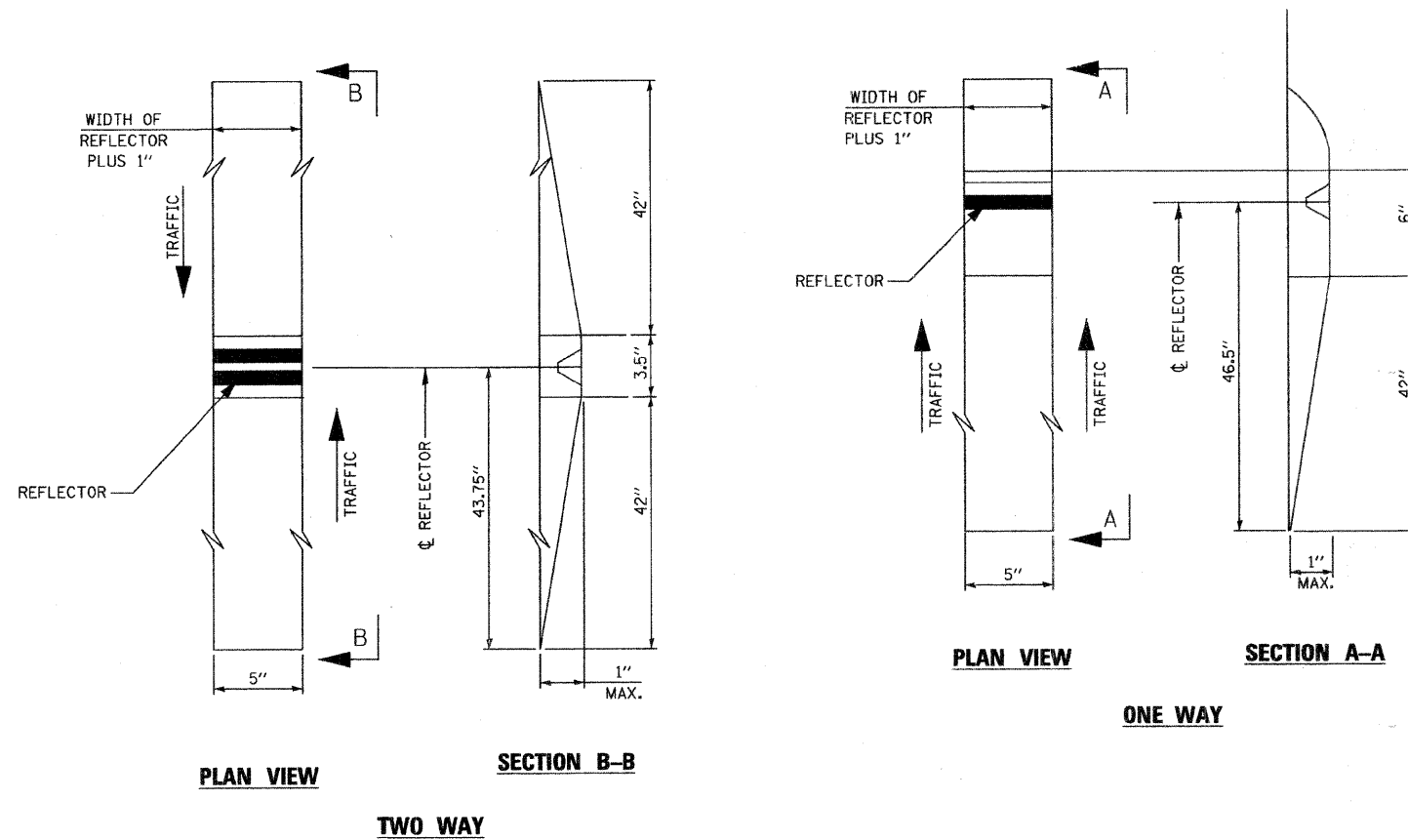


NOTES:

1. The Arrowboard, the Flagger Ahead trailer mounted sign, and the Trucks Leaving Highway sign shall be removed or turned away from traffic and the exit and entry openings shall be closed when the flagging operation ceases.
2. Work Zone Exit Openings should be a minimum of one half mile apart.
3. Exiting the work zone at any place other than at a Work Zone Exit Opening will be prohibited.
4. All vehicles shall enter the work zone at entry openings, using their turn signals to warn motorists

ALL DIMENSIONS ARE IN INCHES (MILLIMETERS) UNLESS OTHERWISE SHOWN

FILE NAME =	USER NAME = #USER*	DESIGNED -	REVISED - D.W.S. 08-98	<b>STATE OF ILLINOIS DEPARTMENT OF TRANSPORTATION</b>	<b>SIGNING FOR FLAGGING OPERATIONS AT WORK ZONE OPENINGS</b>			F.A.S. RTE.	SECTION	COUNTY	TOTAL SHEETS	SHEET NO.	
#FILE#		DRAWN -	REVISED - J.A.F. 04-03		SCALE: NONE	SHEET NO. 1 OF 1 SHEETS	STA.	TO STA.	25	09-00361-00-RS	McHENRY	14	13
		CHECKED -	REVISED - J.A.F. 02-06					<b>TC-18</b>		<b>CONTRACT NO. 63131</b>			
		DATE -	REVISED - S.P.B. 01-07		FED. ROAD DIST. NO. 1 ILLINOIS FED. AID PROJECT								



**RECESSED REFLECTIVE MARKERS**

**INSTALLATION NOTES:**

1. SAWCUT IN DIMENSIONS SHOWN.
2. SAWCUT AREAS TO BE DRY AND FREE OF MATERIAL THAT ADVERSELY AFFECTS THE ADHESIVE BAND.
3. INSTALL THE REFLECTOR WITH AN APPROVED TWO-COMPONENT EPOXY ADHESIVE. EPOXY SHOULD NOT OBSCURE OR BLOCK THE LENS.
4. INSTALL TOP OF REFLECTOR  $\frac{1}{2}$  TO  $\frac{1}{4}$  INCH BELOW THE PAVEMENT SURFACE.
5. REFLECTOR SHALL BE 3M SERIES 290.

**GENERAL NOTES:**

1. INSTALLATION SHALL CONFORM TO IDOT HIGHWAY STANDARD 781001-03 (OR LATEST) FOR MARKER PLACEMENT.
2. IDOT STANDARD 781001-03 SHALL BE MODIFIED TO REFLECT IN RECESSED PAVEMENT MARKERS INSTEAD OF RAISED PAVEMENT MARKERS.

FILE NAME =	USER NAME = #USER*	DESIGNED -	REVISED -	<b>McHENRY COUNTY DIVISION OF TRANSPORTATION</b>	<b>RECESSED PAVEMENT MARKER DETAIL</b>			F.A.S. RTE.	SECTION	COUNTY	TOTAL SHEETS	SHEET NO.
#FILE#		DRAWN -	REVISED -					25	09-00361-00-RS	McHENRY	14	14
	PLOT SCALE = #SCALE*	CHECKED -	REVISED -		CONTRACT NO. 63131							
	PLOT DATE = #DATE*	DATE -	REVISED -		SCALE:	SHEET NO.	OF SHEETS	STA.	TO STA.	FED. ROAD DIST. NO.	ILLINOIS FED. AID PROJECT	