

STATE OF ILLINOIS
DEPARTMENT OF TRANSPORTATION
DIVISION OF HIGHWAYS

PLANS FOR PROPOSED FEDERAL AID HIGHWAY

MISCELLANEOUS SIDEWALKS
59th Street, 63rd Street, 65th Street, Traube Avenue, Lincoln Street
PROJECT NO.: CMM-8003(956)
SECTION NO.: 08-00098-00-SW
VILLAGE OF WESTMONT
DU PAGE COUNTY
JOB NO.: C-91-213-08

INDEX OF SHEETS

- SHEET NO.
- COVER SHEET
 - LEGEND, GENERAL NOTES AND SUMMARY OF QUANTITIES
 - 65TH STREET PLAN (WILLOW LANE TO CASS AVENUE)
 - 59TH STREET PLAN (TIMBER RIDGE COURT TO RICHMOND AVENUE)
 - TRAUBE AVENUE PLAN (ROSLYN ROAD TO PARK STREET)
 - LINCOLN STREET PLAN (NAPERVILLE ROAD TO STA. 9+36)
 - 63RD STREET (RIDGE ROAD TO STA. 10+75)
 - 63RD STREET (STA. 10+75 TO RICHMOND AVENUE)
 - MISCELLANEOUS DETAILS
 - MISCELLANEOUS DETAILS
 - TRAFFIC CONTROL
 - DISTRICT 1 TYPICAL PAVEMENT MARKINGS

CONTACT

VILLAGE OF WESTMONT ENGINEERING DIVISION CONTACT: NORIEL NORIEGA OFFICE: 630-981-6295 FAX: 630-829-4479 24 HR: 630-968-2151	BURNS & MCDONNELL CONTACT: ANTHONY BRYANT OFFICE: 630-724-3200 FAX: 630-724-3201	IDOT CONTACT: Marilin Solomon OFFICE: 847-705-4407 FAX: 847-705-4203	DUDOT CONTACT: ROBERT KOLAR OFFICE: 630-407-6900 FAX: 630-407-6901
--	---	---	---

STATE STANDARDS

- | | |
|-----------|---|
| 000001-05 | STANDARD SYMBOL, ABBREVIATIONS AND PATTERNS |
| 424001-05 | CURB RAMPS FOR SIDEWALKS |
| 701801-04 | LANE CLOSURE, MULTILANE, 1W OR 2W CROSSWALK OR SIDEWALK CLOSURE |
| 701901-01 | TRAFFIC CONTROL DEVICES |
| 701301-03 | LANE CLOSURE, 2L, 2W, SHORT TIME OPERATIONS |
| 542301-02 | PRECAST REINFORCED CONCRETE FLARED END SECTION |
| 542401-01 | METAL END SECTION FOR PIPE CULVERTS |
| 602011-01 | CATCH BASIN TYPE C |
| 604021-02 | BASE, FRAME, AND LIDS TYPE 5 |

LENGTH OF PROJECT

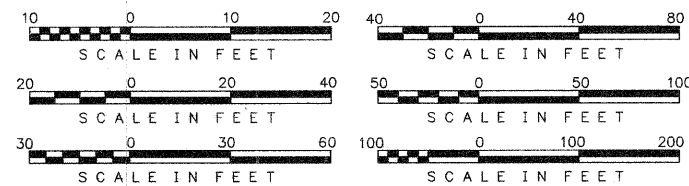
PROJECT LENGTH GROSS = 0.64 MILES (3401 FT.)
NET = 0.61 MILES (3221 FT.)

DESIGN DESIGNATION - SIDEWALK

TRAFFIC DATA

59TH STREET ADT = 3,950
SPEED LIMIT = 25 MPH

63rd STREET ADT = <25,000
SPEED LIMIT = 40 MPH

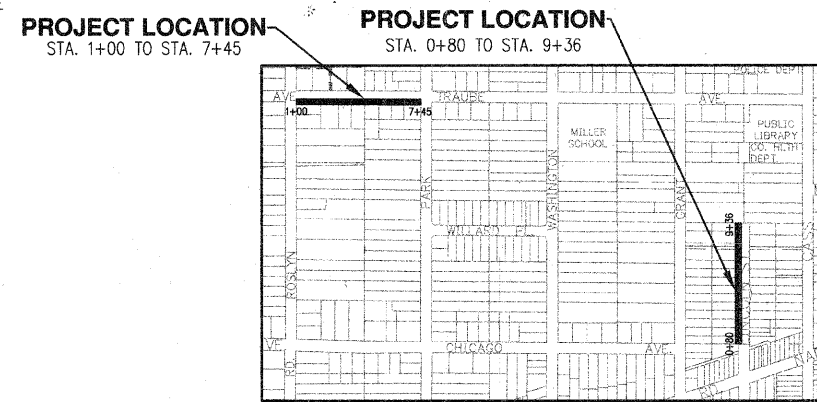


FULL SIZE PLANS HAVE BEEN PREPARED USING STANDARD ENGINEERING SCALES. REDUCED SIZED PLANS WILL NOT CONFORM TO STANDARD SCALES, IN MAKING MEASUREMENT ON REDUCED PLANS, THE ABOVE SCALES MAY BE USED.

CONTRACT NO.: 63132

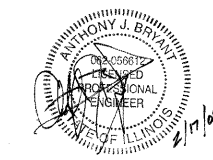


F.A.P. RTE.	SECTION	COUNTY	TOTAL SHEETS	SHEET NO.
-	08-00098-00-SW	DU PAGE	12	1
FEDERAL RD. DIST. NO.		ILLINOIS	FEDERAL AID PROJECT	
CONTRACT: 63132				



PROJECT LOCATION
STA. 0+58 TO STA. 13+91

TOWNSHIP: 38 DOWNERS GROVE TOWNSHIP NORTH
RANGE: 11



ANTHONY J. BRYANT, P.E.
NO. 062-056612
EXP. DATE: 11/30/2009

STATE OF ILLINOIS
DEPARTMENT OF TRANSPORTATION
DIVISION OF HIGHWAYS

Approved: *[Signature]*
Public Works Supervisor
Local Agency, Position

Passed: FEBRUARY 26, 2009
[Signature]
District # Engineer of Local Roads & Streets

Releasing for Bid
Based on Limited Review
FEBRUARY 26, 2009
[Signature]
Deputy of Highways, Region # Engineer

**PRINTED BY THE AUTHORITY
OF THE STATE OF ILLINOIS**



IL DESIGN FIRM NO. 184-001310

FIELD ENGINEER: MARILIN SOLOMON 847-705-4407