

STATE OF ILLINOIS  
DEPARTMENT OF TRANSPORTATION  
DIVISION OF HIGHWAYS

# PLANS FOR PROPOSED FEDERAL AID HIGHWAY

MISCELLANEOUS SIDEWALKS  
59th Street, 63rd Street, 65th Street, Traube Avenue, Lincoln Street  
PROJECT NO.: CMM-8003(956)  
SECTION NO.: 08-00098-00-SW  
VILLAGE OF WESTMONT  
DU PAGE COUNTY  
JOB NO.: C-91-213-08

**INDEX OF SHEETS**

- SHEET NO.
- COVER SHEET
  - LEGEND, GENERAL NOTES AND SUMMARY OF QUANTITIES
  - 65TH STREET PLAN (WILLOW LANE TO CASS AVENUE)
  - 59TH STREET PLAN (TIMBER RIDGE COURT TO RICHMOND AVENUE)
  - TRAUBE AVENUE PLAN (ROSLYN ROAD TO PARK STREET)
  - LINCOLN STREET PLAN (NAPERVILLE ROAD TO STA. 9+36)
  - 63RD STREET (RIDGE ROAD TO STA. 10+75)
  - 63RD STREET (STA. 10+75 TO RICHMOND AVENUE)
  - MISCELLANEOUS DETAILS
  - MISCELLANEOUS DETAILS
  - TRAFFIC CONTROL
  - DISTRICT 1 TYPICAL PAVEMENT MARKINGS

**CONTACT**

VILLAGE OF WESTMONT ENGINEERING DIVISION CONTACT: NORIEL NORIEGA OFFICE: 630-981-6295 FAX: 630-829-4479 24 HR: 630-968-2151	BURNS & MCDONNELL CONTACT: ANTHONY BRYANT OFFICE: 630-724-3200 FAX: 630-724-3201	IDOT CONTACT: Marilin Solomon OFFICE: 847-705-4407 FAX: 847-705-4203	DUDOT CONTACT: ROBERT KOLAR OFFICE: 630-407-6900 FAX: 630-407-6901
--	---	---	---

**STATE STANDARDS**

- |           |   |
|-----------|---|
| 000001-05 | STANDARD SYMBOL, ABBREVIATIONS AND PATTERNS                     |
| 424001-05 | CURB RAMPS FOR SIDEWALKS  |
| 701801-04 | LANE CLOSURE, MULTILANE, 1W OR 2W CROSSWALK OR SIDEWALK CLOSURE |
| 701901-01 | TRAFFIC CONTROL DEVICES   |
| 701301-03 | LANE CLOSURE, 2L, 2W, SHORT TIME OPERATIONS                     |
| 542301-02 | PRECAST REINFORCED CONCRETE FLARED END SECTION                  |
| 542401-01 | METAL END SECTION FOR PIPE CULVERTS                             |
| 602011-01 | CATCH BASIN TYPE C  |
| 604021-02 | BASE, FRAME, AND LIDS TYPE 5                                    |

**LENGTH OF PROJECT**

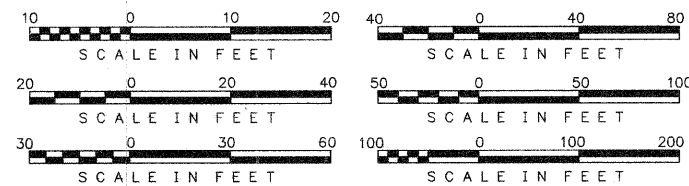
PROJECT LENGTH GROSS = 0.64 MILES (3401 FT.)  
NET = 0.61 MILES (3221 FT.)

**DESIGN DESIGNATION - SIDEWALK**

**TRAFFIC DATA**

59TH STREET ADT = 3,950  
SPEED LIMIT = 25 MPH

63rd STREET ADT = <25,000  
SPEED LIMIT = 40 MPH

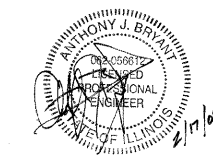
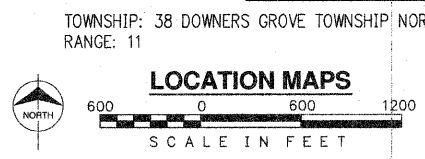
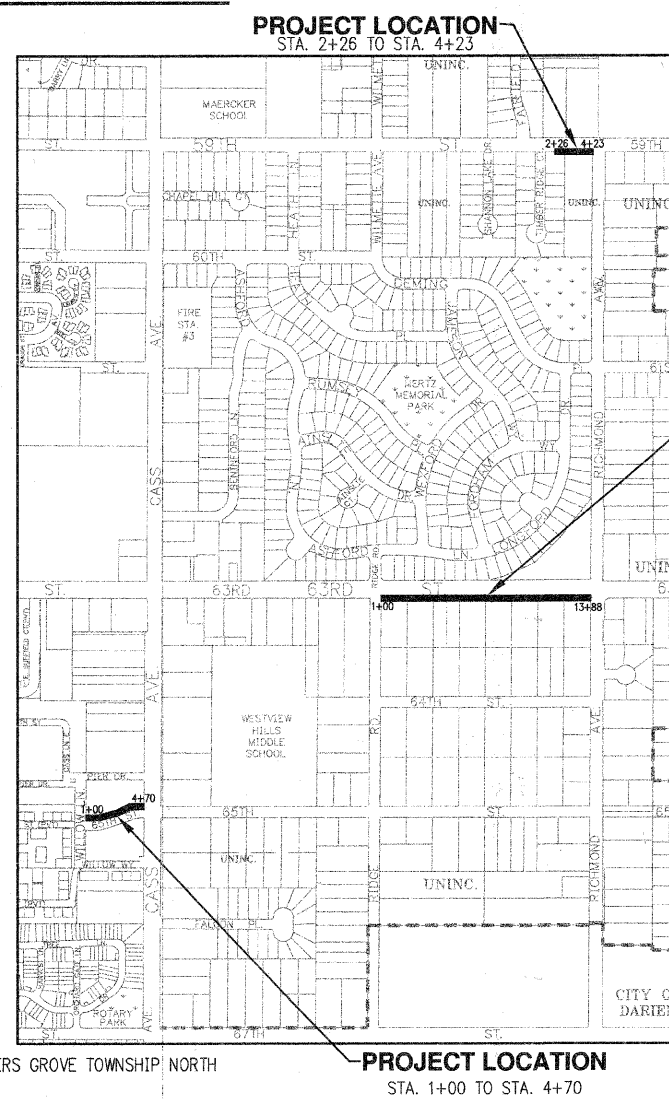
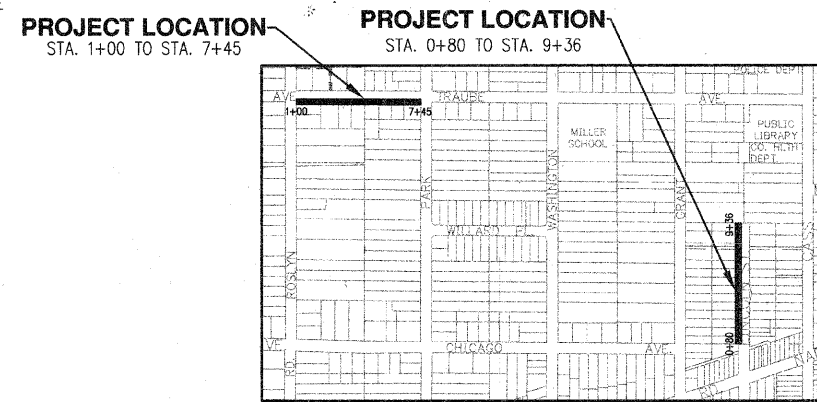


FULL SIZE PLANS HAVE BEEN PREPARED USING STANDARD ENGINEERING SCALES. REDUCED SIZED PLANS WILL NOT CONFORM TO STANDARD SCALES, IN MAKING MEASUREMENT ON REDUCED PLANS, THE ABOVE SCALES MAY BE USED.

**CONTRACT NO.: 63132**



F.A.P. RTE.	SECTION	COUNTY	TOTAL SHEETS	SHEET NO.
-	08-00098-00-SW	DU PAGE	12	1
FEDERAL RD. DIST. NO.		ILLINOIS	FEDERAL AID PROJECT	
CONTRACT: 63132				



ANTHONY J. BRYANT, P.E.  
NO. 062-056612  
EXP. DATE: 11/30/2009

STATE OF ILLINOIS  
DEPARTMENT OF TRANSPORTATION  
DIVISION OF HIGHWAYS

Approved: *[Signature]*  
Public Works Supervisor  
Local Agency, Position

Passed: FEBRUARY 26, 2009  
*[Signature]*  
District # Engineer of Local Roads & Streets

Releasing for Bid  
Based on Limited Review  
FEBRUARY 26, 2009  
*[Signature]*  
Deputy of Highways, Region # Engineer

**PRINTED BY THE AUTHORITY  
OF THE STATE OF ILLINOIS**



IL DESIGN FIRM NO. 184-001310

FIELD ENGINEER: MARILIN SOLOMON 847-705-4407

no.	date	by	ckd	description
-----	------	----	-----	-------------

**LEGEND**

- x--- EXISTING FENCE
- o--- EXISTING R.O.W.
- o--- PROPOSED FENCE
- LIMITS OF TOP SOIL AND SOD
- ~~~~~ TREE LINE
- ⊕ LIGHT POLE
- ⊕ ET ELECTRIC TRANSFORMER
- ⊕ ET ELECTRICAL TRANSFORMER W/CONC. PAD
- ⊕ TRAFFIC SIGNAL
- ⊕ POWER POLE
- ⊕ GUY WIRE
- ⊕ T TELEPHONE PEDESTAL
- ⊕ HANDHOLE
- ⊕ FIRE HYDRANT
- ⊕ LANDSCAPE STONE
- ⊕ STORM SEWER INLET
- ⊕ TREE STUMP
- ⊕ TREE OR SHRUB
- (FOUND) C PROPERTY PIPE (FOUND)
- ⊕ SIGN
- PK1 A CONTROL POINT (PK-NAIL)
- ⊕ BENCHMARK

SUMMARY OF QUANTITIES				
SI	SP	CODE NO	ITEM	SFTY-1B
		20100110	TREE REMOVAL (6 TO 15 UNITS DIAMETER)	8
*		20101200	TREE ROOT PRUNING	23
*		20101300	TREE PRUNING (1 TO 10 INCH DIAMETER)	15
*		20101350	TREE PRUNING (OVER 10 INCH DIAMETER)	9
		20201200	REMOVAL AND DISPOSAL OF UNSUITABLE MATERIAL	505
		20800150	TRENCH BACKFILL	46
*		21101615	TOPSOIL FURNISH AND PLACE, 4"	3390
*		25000400	NITROGEN FERTILIZER NUTRIENT	45
*		25000500	PHOSPHORUS FERTILIZER NUTRIENT	45
*		25000600	POTASSIUM FERTILIZER NUTRIENT	45
*		25200110	SODDING, SALT TOLERANT	3390
*		25200200	SUPPLEMENTAL WATERING	50
		28100105	STONE RIPRAP, CLASS A3	25
		28200200	FILTER FABRIC	25
		35100500	AGGREGATE BASE COURSE, TYPE A 6"	490
		40603310	HMA SURFACE COURSE, MIX C, N 50	55
		42300100	PCC DRIVEWAY PAVEMENT, 5 INCH	97
		42400200	PCC SIDEWALK 5 INCH	16175
		42400800	DETECTABLE WARNINGS	222
		44000200	DRIVEWAY PAVEMENT REMOVAL	744
		44000600	SIDEWALK REMOVAL	38
		54200220	PIPE CULVERTS, CLASS D, TYPE 1 15"	23
		54200223	PIPE CULVERTS, CLASS D, TYPE 1 18"	35
		54200427	PIPE CULVERTS, TYPE 1 RCCP 12"	10
		54213657	PRECAST REINFORCED CONCRETE FLARED END SECTIONS 12"	1
		54213867	STEEL END SECTIONS 12"	1
		54213870	STEEL END SECTIONS 15"	2
		54213873	STEEL END SECTIONS 18"	2
		550B0050	STORM SEWERS, CLASS B, TYPE 1 12"	156
		55100400	STORM SEWER REMOVAL 10"	8
*		56500600	DOMESTIC WATER SERVICE BOXES TO BE ADJUSTED	3
		60207305	CATCH BASINS, TYPE C, TYPE 5 FRAME, OPEN LID	2
		67100100	MOBILIZATION	1
*		70102640	TRAFFIC CONTROL AND PROTECTION, STANDARD 701801	1
*		78000400	THERMOPLASTIC PAVEMENT MARKING - LINE 6"	280
		B2000116	TREE, ACER CAMPESTRE (HEDGE MAPLE), 2" CALIPER, TREE FORM, BALLED AND BURLAPPED	1
*		X0322494	CURB CUT	23
		X004656	EMBANKMENT	5
		Z0013798	CONSTRUCTION LAYOUT	1

\* SI = SPECIALTY ITEMS

HOT-MIX ASPHALT MIXTURE REQUIREMENTS		
PAY ITEM	AC TYPE	VOIDS
HMA SURFACE COURSE, MIX C, N 50 (IL 9.5 mm); 2"	PG 64-22	4% @ 50 GYR

UNIT WEIGHT FOR ALL HMA SURFACE MIX IS 112 LBS/SQ YD/IN

EARTHWORK SCHEDULE		
LOCATION	REMOVAL AND DISPOSAL OF UNSUITABLE MATERIAL (CU. YD.)	TOPSOIL FURNISH AND PLACE (SQ. YD.)
65th STREET STA. 1+00 TO STA. 4+70	60	170
59th STREET STA. 2+26 TO STA. 4+23	30	215
TRAUBE AVENUE STA. 1+00 TO STA. 7+45	100	700
LINCOLN STREET STA. 0+80 TO STA. 9+36	125	765
63rd STREET STA. 1+00 TO STA. 13+88	190	1,540
TOTAL	505	3,390

**GENERAL NOTES**

- THE CONTRACTOR SHALL NOTIFY J.U.L.I.E. (800-892-0123) AT LEAST 48 HOURS PRIOR TO CONSTRUCTION FOR LOCATIONS OF UTILITIES, AND SHALL BE RESPONSIBLE FOR THE PROTECTION OF THE SAME.
- THE CONTRACTOR SHALL NOTIFY THE DUPAGE COUNTY DIVISION OF TRANSPORTATION (630-682-7318) A MINIMUM OF 48 HOURS PRIOR TO THE START OF CONSTRUCTION WITHIN THE COUNTY'S RIGHT OF WAY AND WITHIN 300' OF ANY COUNTY MAINTAINED SIGNAL. TRAFFIC SIGNALS AND RELATED EQUIPMENT ARE NOT ON THE J.U.L.I.E. SYSTEM.
- THE CONTRACTOR SHALL NOTIFY BURNS & McDONNELL (THE ENGINEER) AND THE VILLAGE OF WESTMONT AT LEAST 48 HOURS IN ADVANCE OF CONSTRUCTION. NO UNDERGROUND WORK SHALL BE COVERED UNTIL IT HAS BEEN INSPECTED. APPROVAL TO PROCEED MUST BE OBTAINED FROM THE ENGINEER PRIOR TO POURING ANY CONCRETE AFTER FORMS HAVE BEEN SET. THE CONTRACTOR IS RESPONSIBLE FOR OBTAINING ALL NECESSARY PERMITS FROM DUPAGE COUNTY D.O.T. AND IDOT.
- CONTRACTORS ARE CAUTIONED AGAINST INSTITUTING ANY CHANGES AND/OR SUBSTITUTIONS TO THE PROJECT REPRESENTED BY THESE DRAWINGS WITHOUT PRIOR WRITTEN APPROVAL BY THE ENGINEER. VISUAL CONTACT WITH THESE DRAWINGS SHALL CONSTITUTE CONCLUSIVE EVIDENCE OF ACCEPTANCE OF THESE RESTRICTIONS.
- WRITTEN DIMENSIONS ON THESE DRAWINGS SHALL TAKE PRECEDENCE OVER SCALED DIMENSIONS. CONTRACTORS SHALL VERIFY AND BE RESPONSIBLE FOR ALL ELEVATIONS, DIMENSIONS, AND CONDITIONS ON THE JOB. THE ENGINEER SHALL BE NOTIFIED AS SOON AS POSSIBLE OF ANY VARIATIONS FROM THE DIMENSIONS AND CONDITIONS SHOWN ON THESE DRAWINGS.
- IT IS UNDERSTOOD THAT THE UNIT QUANTITIES CONTAINED IN THE SCHEDULE OF PRICES ARE INSERTED TO ENABLE THE OWNER TO CANVASS THE PROPOSALS; THAT THE UNIT PRICES NAMED IN THE PROPOSAL WILL APPLY WHETHER THE ACTUAL QUANTITIES BE GREATER OR SMALLER THAN THE ESTIMATED QUANTITY; THAT PAYMENT WILL BE MADE FOR THE TOTAL WORK ACTUALLY DONE, AND THAT, IN THE EVENT THAT THE ACTUAL QUANTITY IS LESS IN ANY CASE THAN THE ESTIMATED QUANTITY OR THAT THE ACTUAL PROPOSED WORK IS OMITTED FROM THE CONTRACT, THE OWNER WILL NOT BE HELD LIABLE FOR ANY COMPENSATION IN ADDITION TO THE AMOUNT DETERMINED BY APPLYING AGREED PRICES TO QUANTITIES OF WORK DONE NOR WILL SAID OWNER BE HELD LIABLE FOR ANY LOSS OF ANTICIPATED PROFITS FOR WORK OMITTED OR FOR ANY OTHER CLAIM IN THE PREMISES.
- ALL WORK FOR WHICH THERE IS NO SPECIFIC PAY ITEM SHALL BE CONSIDERED INCIDENTAL AND NO SEPARATE PAYMENT SHALL BE MADE WITH RESPECT TO INCIDENTAL WORK.
- ANY DELAY OR EXTRA COST TO THE CONTRACTOR CAUSED BY PIPELINES OR OTHER UNDERGROUND STRUCTURES OR OBSTRUCTIONS WHICH ARE NOT SHOWN ON THE DRAWINGS OR FOUND IN LOCATIONS DIFFERENT FROM THOSE INDICATED, SHALL NOT CONSTITUTE A CLAIM FOR EXTRA WORK, ADDITIONAL PAYMENT, OR DAMAGES.
- THE CONTRACTOR SHALL BE RESPONSIBLE FOR THE PROTECTION OF ALL PUBLIC AND PRIVATE UTILITIES, EVEN THOUGH THEY MAY NOT BE SHOWN ON THE DRAWINGS. ANY UTILITY DAMAGES DURING CONSTRUCTION SHALL BE REPAIRED OR REPLACED TO THE SATISFACTION OF THE OWNER AT THE CONTRACTOR'S EXPENSE.
- THE CONTRACTOR SHALL BE RESPONSIBLE FOR REMOVING IMMEDIATELY ANY MUD, DIRT, OR DEBRIS DEPOSITED ON ROADWAYS FROM ANY VEHICLES EXITING OR ENTERING THE SITE.
- THE CONTRACTOR IS ESPECIALLY ALERTED TO THE FACT THAT IT IS HIS RESPONSIBILITY TO GUARD AND PROTECT NEWLY POURED CONCRETE AGAINST ANY FOREIGN MARKINGS, GRAFFITI OR OTHER DAMAGE, AND AT HIS EXPENSE, REPLACE ANY SIDEWALK NOT ACCEPTABLE TO THE ENGINEER.
- ON 63rd STREET DAILY LANE CLOSURES ARE PERMITTED BETWEEN 9:00 A.M. AND 4:00 P.M. ONLY. OTHER LANE CLOSURES SHALL BE RESTRICTED TO THE HOURS OF 8:00 A.M. TO 5:00 P.M. ALL LANES SHALL BE KEPT OPEN FOR THE REMAINING PART OF EVERYDAY. DAILY LANE CLOSURES ON 63rd STREET REQUIRE DUPAGE COUNTY APPROVAL.
- TRAFFIC CONTROL SHALL CONFORM TO IDOT'S HIGHWAY STANDARDS AND THE "MANUAL ON UNIFORM TRAFFIC CONTROL DEVICES FOR STREETS AND HIGHWAYS" AT ALL TIMES DURING CONSTRUCTION. TRAFFIC CONTROL SHALL INCLUDE ADVANCE WARNING LANE CLOSURE SIGNAGE, AN ARROW BOARD AND TYPE I BARRICADES WITH SANDBAGS.
- BEFORE ACCEPTANCE BY THE VILLAGE, ALL WORK SHALL BE INSPECTED AND APPROVED BY THE ENGINEER, THE DUPAGE COUNTY DIVISION OF TRANSPORTATION AND THE ILLINOIS DEPARTMENT OF TRANSPORTATION. FINAL PAYMENT WILL BE MADE ONLY AFTER ALL OF THE CONTRACTOR'S WORK HAS BEEN APPROVED AND ACCEPTED.
- THE CONTRACTOR SHALL COORDINATE CONSTRUCTION ACTIVITIES WITH UTILITY COMPANIES AND THE VILLAGE OF WESTMONT.
- THE CONTRACTOR'S ATTENTION IS CALLED TO THE FACT THAT THE PRESERVATION OF EXISTING TREES IS UTMOST IMPORTANCE TO THE VILLAGE OF WESTMONT. ALL TREE PROTECTION, TREE REMOVAL, PRUNING AND ROOT PRUNING SHALL BE COMPLETED BEFORE CONSTRUCTION OPERATIONS COMMENCE IN ANY AREA. AT NO TIME SHALL THE CONTRACTOR PRUNE OR REMOVE ANY TREES UNLESS SPECIFICALLY DIRECTED BY THE ENGINEER.
- TEMPORARY FENCE SHOULD BE ERECTED ALONG THE DRIP LINE OF EXISTING TREES TO REMAIN WITHIN THE LIMITS OF CONSTRUCTION. AFTER TREES ARE SAFELY FENCED NOTHING IS TO BE STORED, DRIVEN, OR DISTURBED INSIDE THE FENCE. REMOVE PROTECTIVE TEMPORARY FENCE ONLY AFTER ALL CONSTRUCTION WORK HAS BEEN COMPLETED.
- TREE ROOT PRUNING IS TO BE USED ON EXISTING TREES TO PREVENT THE RIPPING UP OF ROOTS WHEN TRENCHING OR EXCAVATION IS WITHIN THE ROOT ZONE OF ADJACENT TREES TO REMAIN. SUPPLEMENTAL WATERING OF TREES SHOULD BEGIN IMMEDIATELY AFTER ROOT PRUNING OF THE TREES HAS OCCURRED.

**NOTE:**  
PROVIDE THERMOPLASTIC PAVEMENT MARKING TO PEDESTRIAN CROSSWALK AT THE FOLLOWING INTERSECTIONS:

**59th STREET**  
105 L.F. THERMOPLASTIC PAVEMENT MARKING-LINE, 6" WHITE

**TRAUBE AVENUE**  
100 L.F. THERMOPLASTIC PAVEMENT MARKING-LINE, 6" WHITE

**63rd STREET**  
75 L.F. THERMOPLASTIC PAVEMENT MARKING-LINE, 6" WHITE



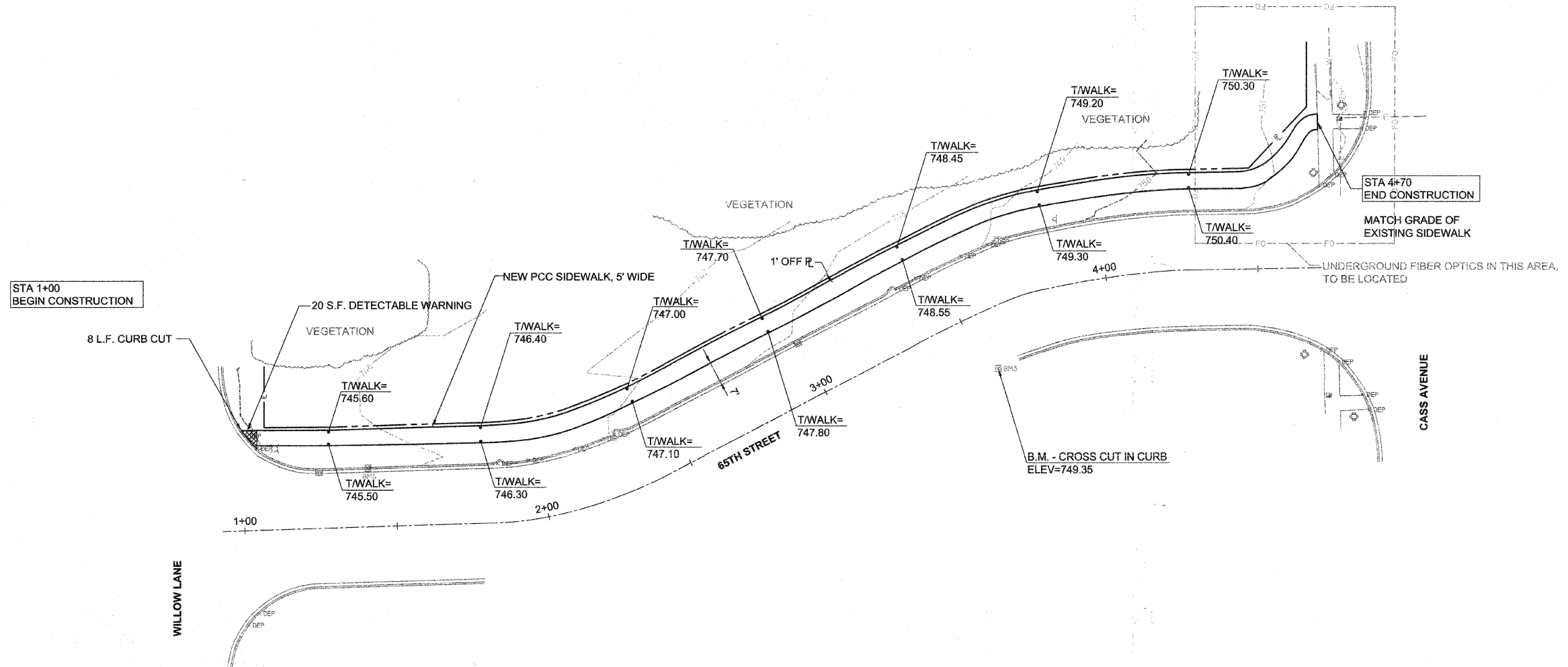
date	designed	detailed	checked
OCTOBER 29, 2008	M. BERENA	D. CHAVEZ	A. BRYANT



VILLAGE OF WESTMONT  
LEGEND, GENERAL NOTES,  
EARTHWORK SUMMARY  
AND SUMMARY OF QUANTITIES

project	contract
48924	63132
drawing	rev.
<b>G002</b>	
sheet 2	of 12 sheets
file 002 LGND_NOTES.DWG	

no.	date	by	ckd	description
-----	------	----	-----	-------------

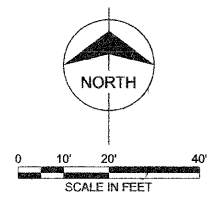


Millimeters  
Scale For Microfilming  
Inches

**QUANTITIES THIS SHEET**

- 1900 SF PCC SIDEWALK 5
- 60 CY REMOVAL AND DISPOSAL OF UNSUITABLE MATERIAL
- 170 SY TOPSOIL FURNISH AND PLACE, 4"
- 170 SY SODDING, SALT TOLERANT

COPYRIGHT © 2008 BURNS & MCDONNELL ENGINEERING COMPANY, INC.

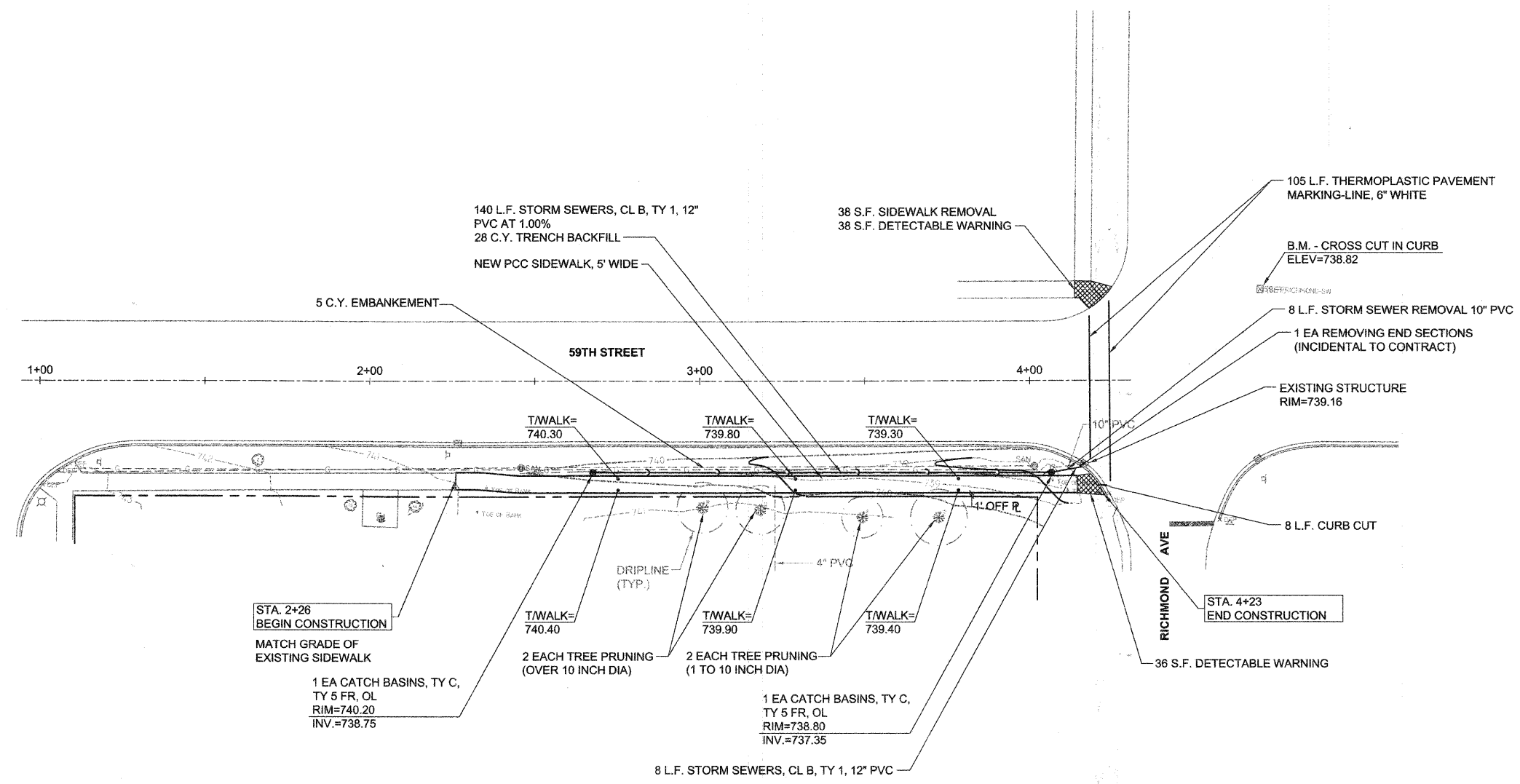


date	OCTOBER 29, 2008	detailed	D. CHAVEZ
designed	M. BERENA	checked	A. BRYANT



VILLAGE OF WESTMONT PROPOSED 2008 CMAQ SIDEWALK PROJECT 65TH STREET	
project	contract
48924	63132
drawing	rev.
<b>C101</b>	
sheet 3	of 12 sheets
file 48924_65TH_C001.DWG	

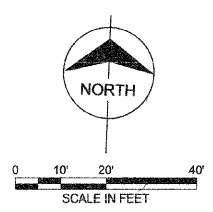
no.	date	by	ckd	description
-----	------	----	-----	-------------



Scale For Microlifting  
 Millimeters  
 Inches

TIMBER RIDGE CT

RICHMOND AVE



- QUANTITIES THIS SHEET**
- 950 SF PCC SIDEWALK 5
  - 30 CY REMOVAL AND DISPOSAL OF UNSUITABLE MATERIAL
  - 215 SY TOPSOIL FURNISH AND PLACE, 4"
  - 215 SY SODDING, SALT TOLERANT



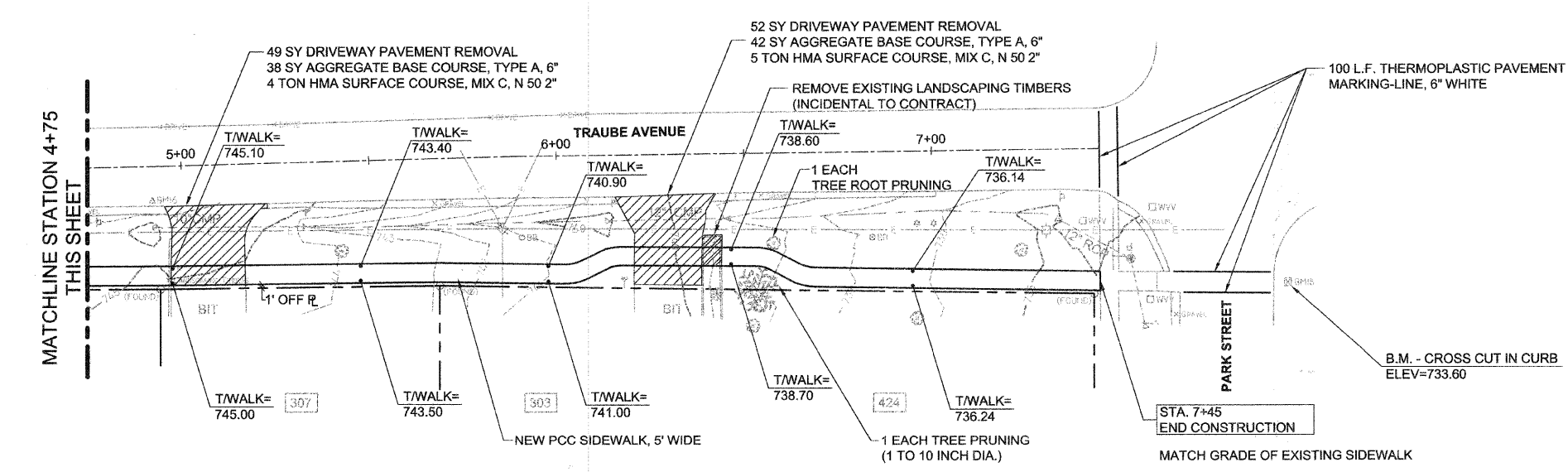
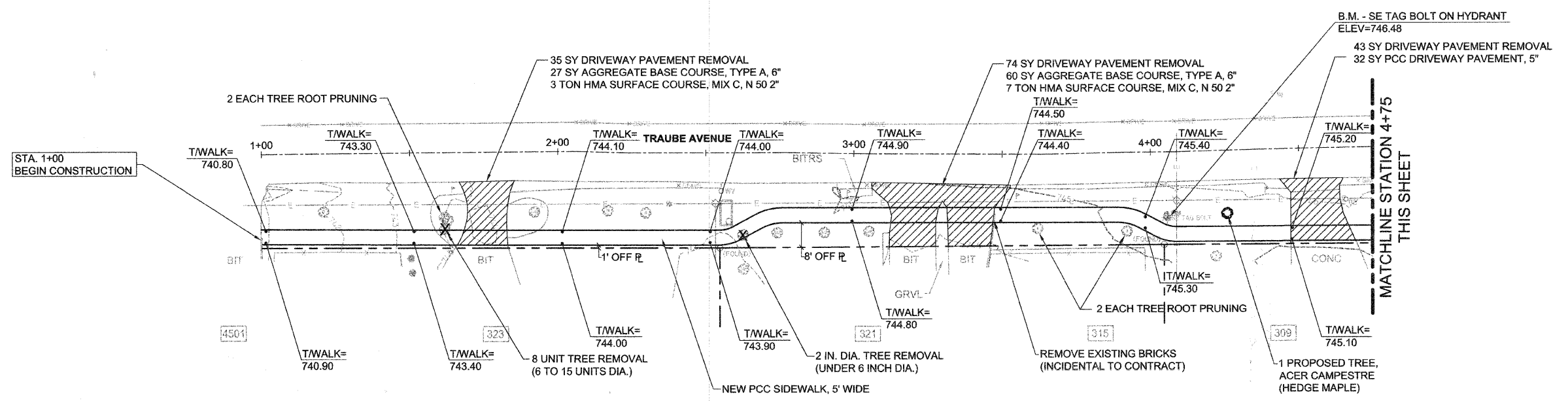
date OCTOBER 29, 2008	detailed D. CHAVEZ
designed M. BERENA	checked A. BRYANT



VILLAGE OF WESTMONT PROPOSED 2008 CMAQ SIDEWALK PROJECT 59TH STREET	
project 48924	contract 63132
drawing <b>C201</b>	rev.
sheet 4	of 12 sheets
file 48924_59TH_C101.DWG	

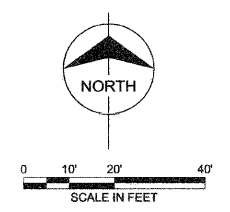
COPYRIGHT © 2008 BURNS & MCDONNELL ENGINEERING COMPANY, INC.


no.	date	by	ckd	description
-----	------	----	-----	-------------



**QUANTITIES THIS SHEET**


3225 SF	PCC SIDEWALK 5
100 CY	REMOVAL AND DISPOSAL OF UNSUITABLE MATERIAL
700 SY	TOPSOIL FURNISH AND PLACE, 4"
700 SY	SODDING, SALT TOLERANT





**Burns & McDonnell**  
SINCE 1928

date OCTOBER 29, 2008	detailed D. CHAVEZ
designed M. BERENA	checked A. BRYANT



**WESTMONT**  
ILLINOIS

VILLAGE OF WESTMONT  
PROPOSED 2008 CMAQ  
SIDEWALK PROJECT  
TRAUBE STREET

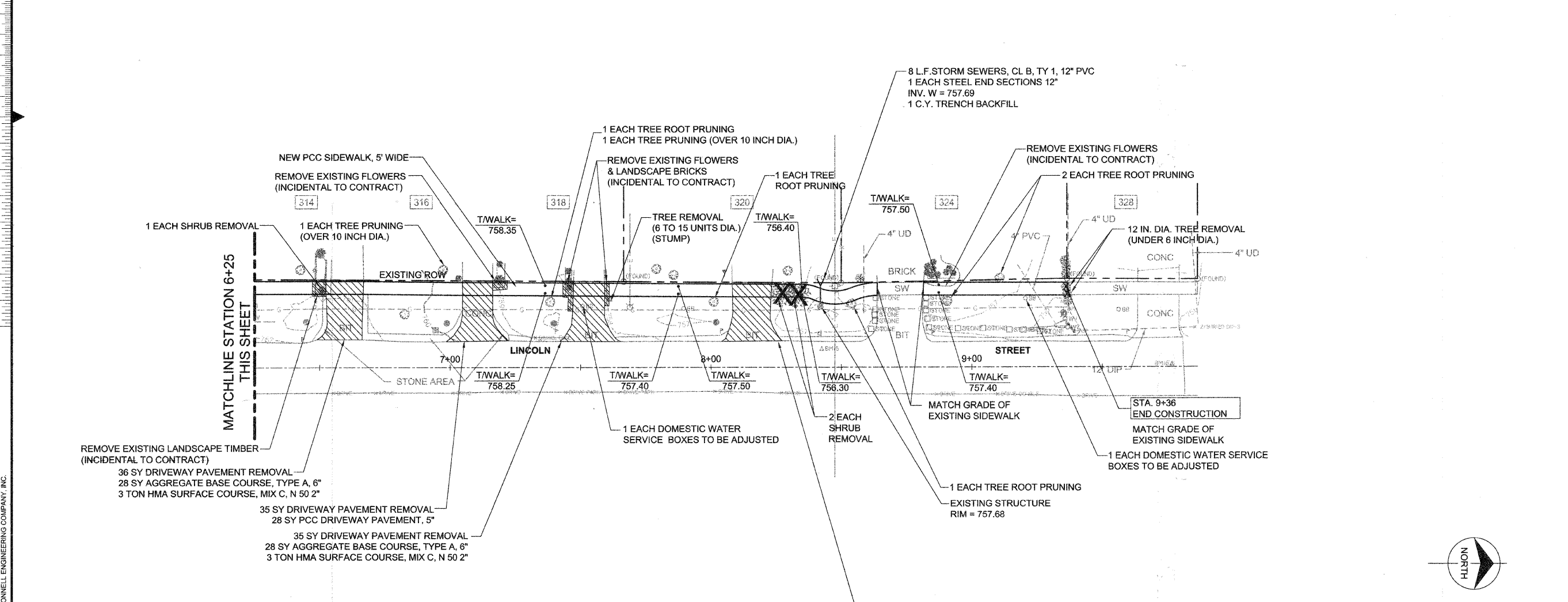
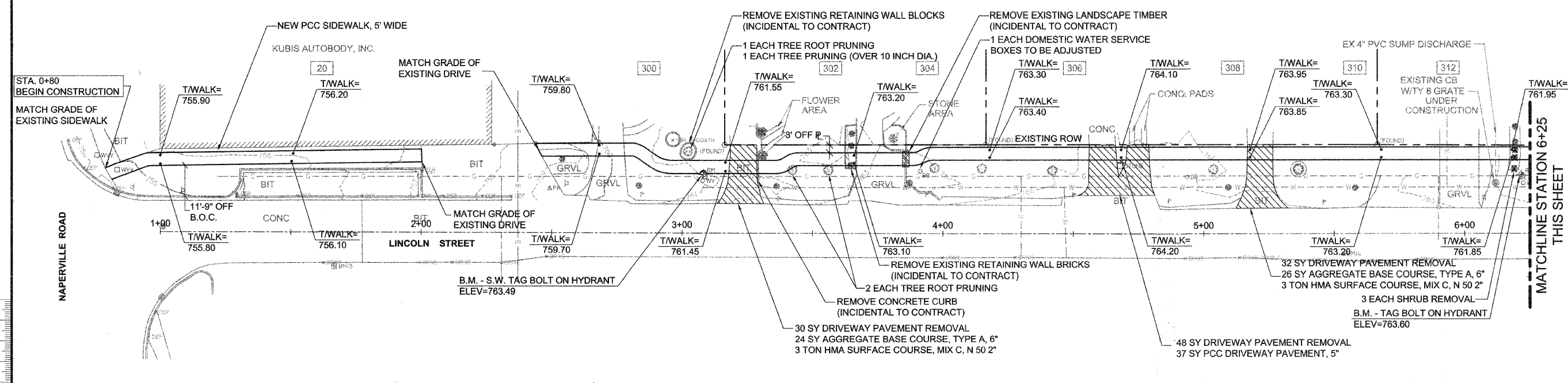
project 48924	contract 63132
drawing <b>C301</b> - rev.	
sheet 5 of 12 sheets	
file 48924_TRAUBE_C201.DWG	

Scale For Microfilming

Inches

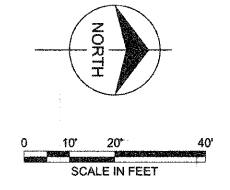
COPYRIGHT © 2008 BURNS & MCDONNELL ENGINEERING COMPANY, INC.

no.	date	by	ckd	description



**QUANTITIES THIS SHEET**

3995 SF	PCC SIDEWALK 5
125 CY	REMOVAL AND DISPOSAL OF UNSUITABLE MATERIAL
765 SY	TOPSOIL FURNISH AND PLACE, 4"
765 SY	SODDING, SALT TOLERANT



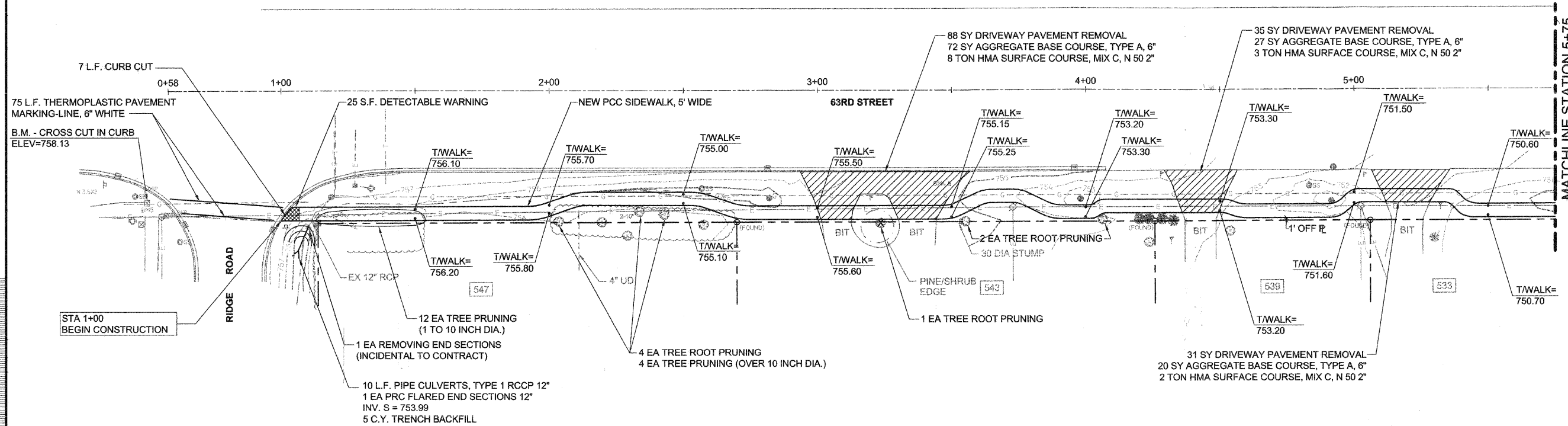
date	OCTOBER 29, 2008	detailed	D. CHAVEZ
designed	M. BERENA	checked	A. BRYANT



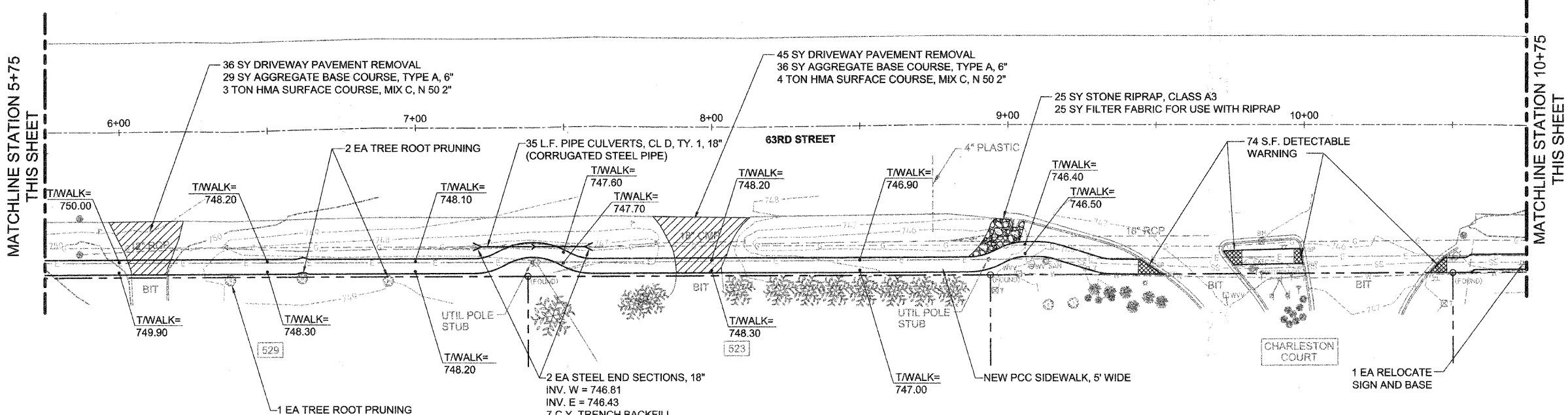
VILLAGE OF WESTMONT PROPOSED 2008 CMAQ SIDEWALK PROJECT LINCOLN STREET			
project	48924	contract	63132
drawing		C401 - rev.	
sheet	6	of	12
file		48924_LINCOLN_C301.DWG	

COPYRIGHT © 2008 BURNS & MCDONNELL ENGINEERING COMPANY, INC.

no.	date	by	ckd	description
-----	------	----	-----	-------------



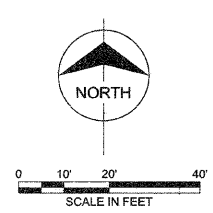
MATCHLINE STATION 5+75  
THIS SHEET



MATCHLINE STATION 10+75  
THIS SHEET

**QUANTITIES THIS SHEET**

- 4555 SF PCC SIDEWALK 5
- 140 CY REMOVAL AND DISPOSAL OF UNSUITABLE MATERIAL
- 1155 SY TOPSOIL FURNISH AND PLACE, 4"
- 1155 SY SODDING, SALT TOLERANT



date	OCTOBER 29, 2008	detailed	D. CHAVEZ
designed	M. BERENA	checked	A. BRYANT

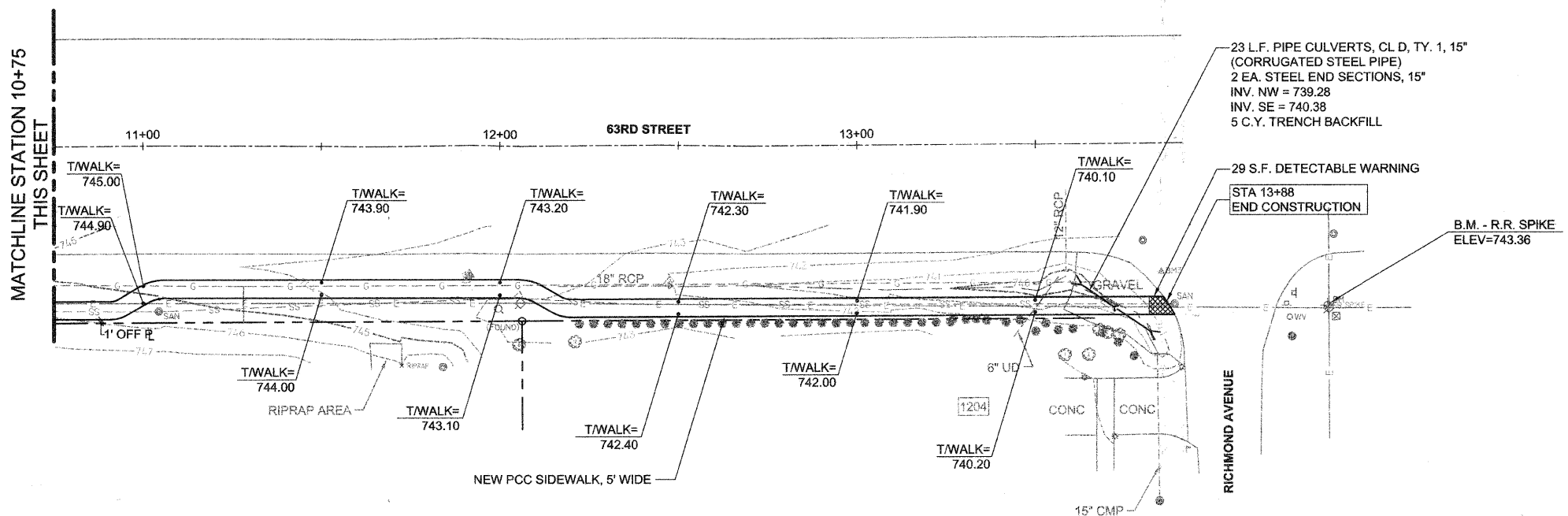


VILLAGE OF WESTMONT PROPOSED 2008 CMAQ SIDEWALK PROJECT 63RD STREET	
project	contract
48924	63132
drawing	rev.
<b>C501</b>	
sheet 7	of 12 sheets
file 48924_63RD_C501.DWG	

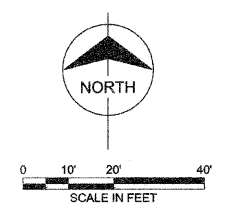
COPYRIGHT © 2008 BURNS & MCDONNELL ENGINEERING COMPANY, INC.

no.	date	by	ckd	description
-----	------	----	-----	-------------

Millimeters  
Scale For Microfitting  
Inches



- QUANTITIES THIS SHEET**
- 1550 SF PCC SIDEWALK 5
  - 50 CY REMOVAL AND DISPOSAL OF UNSUITABLE MATERIAL
  - 385 SY TOPSOIL FURNISH AND PLACE, 4"
  - 385 SY SODDING, SALT TOLERANT



COPYRIGHT © 2008 BURNS & MCDONNELL ENGINEERING COMPANY, INC.



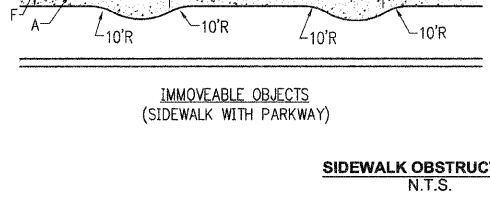
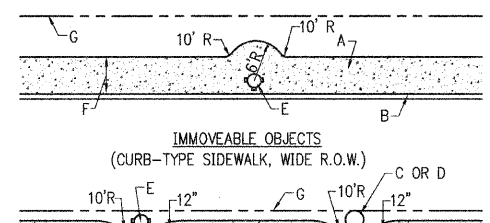
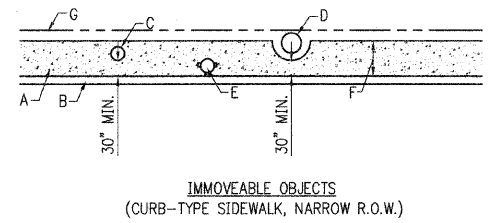
date	JUNE 13, 2008	detailed	D. CHAVEZ
designed	M. BERENA	checked	A. BRYANT



VILLAGE OF WESTMONT  
PROPOSED 2008 CMAQ  
SIDEWALK PROJECT  
63RD STREET

project	48924	contract	63132
drawing	C502 -		
sheet	8	of	12 sheets
file	48924_63RD_C502.DWG		





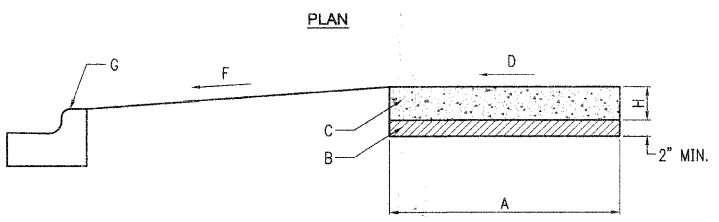
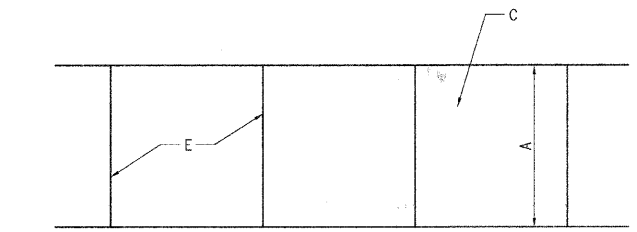
**CONSTRUCTION NOTE:**

- A. SIDEWALK
- B. CURB
- C. SERVICE POLE, SEE NOTES 1 AND 3.
- D. TREE TRUNK, SEE NOTE 1
- E. FIRE HYDRANT, SEE NOTES 1, 2, AND 3.
- F. SIDEWALK WIDTH
- G. RIGHT-OF-WAY (R.O.W.)

**GENERAL NOTES:**

1. A FIRE HYDRANT, SERV. POLE OR TREE TRUNK SHALL BE CONSIDERED IMMOVABLE ONLY WHEN DIRECTED BY THE VILLAGE ENGINEER.
2. THE VILLAGE OF WESTMONT WATER DEPT. SHALL BE CONTACTED AS SOON AS POSSIBLE WHENEVER A FIRE HYDRANT IS FOUND TO BE IN THE PATH OF A NEW SIDEWALK, SO THAT THE FIRE HYDRANT CAN BE RELOCATED, IF POSSIBLE.
3. WHEN A SERVICE POLE OR FIRE HYDRANT IS LOCATED WITHIN THE SIDEWALK AREA, AND IS CONSIDERED IMMOVABLE, A 1/2" EXPANSION JOINT SHALL BE INSTALLED ENCIRCLING THE OBJECT.

**SIDEWALK OBSTRUCTIONS**  
N.T.S.

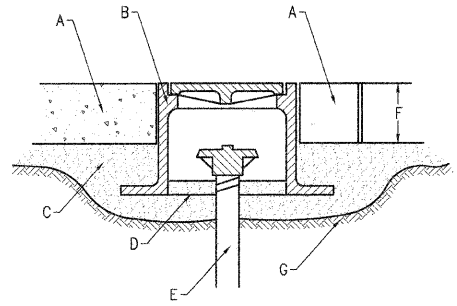


**CONSTRUCTION NOTES**

- A. 5' NORMAL WIDTH OR AS INDICATED ON PLANS
- B. AGGREGATE BASE COURSE, TYPE B, 2"
- C. P.C.C. SIDEWALK
- D. SLOPE 1/4" PER FOOT TO STREET SIDE, OR AS NOTED ON PLAN
- E. JOINTS, SEE NOTES 3 AND 4
- F. SLOPE 2% TO 8% TOWARDS STREET OR AS NOTED ON PLANS
- G. CURB AND GUTTER
- H. CONCRETE THICKNESS, SEE NOTE 1

**GENERAL NOTES**

1. STANDARD THICKNESS OF CONCRETE SHALL BE A MINIMUM OF 5".
2. WHERE WOODEN FORMS ARE USED, 2x4'S ARE NOT ALLOWED. ONLY 2x6'S SHALL BE USED.
3. PREFORMED 3/4" EXPANSION JOINTS SHALL BE CONSTRUCTED AT MAX. SPACING OF 40'.
4. FORMED OR SAW-CUT CONTRACTION JOINTS SHALL BE SPACED GENERALLY 5' APART, BUT NO LESS THAN 4' AND NO MORE THAN 6'.
5. 1/2" EXPANSION JOINTS SHALL BE INSTALLED WHERE SIDEWALK ABUTS BUILDINGS, TRAFFIC SIGNAL FOUNDATIONS, SERVICE POLES, AND OTHER IMMOVABLE STRUCTURES.
6. CONCRETE TO BE MINIMUM 6-BAG MIX.



**CONSTRUCTION NOTES:**

- A. STAMPED CONCRETE PAVEMENT OR CONCRETE BRICK PAVERS.
- B. FOR CONCRETE-ROUND FRAME SHALL BE EQUIVALENT TO TYLER 6895 VALVE BOX. FOR BRICK PAVERS-SQUARE FRAME SHALL BE EQUIVALENT TO NEENAH B-1978-1 INSPECTION FRAME.
- C. COMPACTED AGGREGATE BASE, MIN. 2".
- D. SERVICE BOX LID WITH BRASS PENTAGON HEAD PLUG, TOP TO BE MARKED "WATER".
- E. SERVICE BOX EXTENSION.
- F. SERVICE BOX SET 4"-6" BELOW FINISHED GRADE.
- G. SUBGRADE.



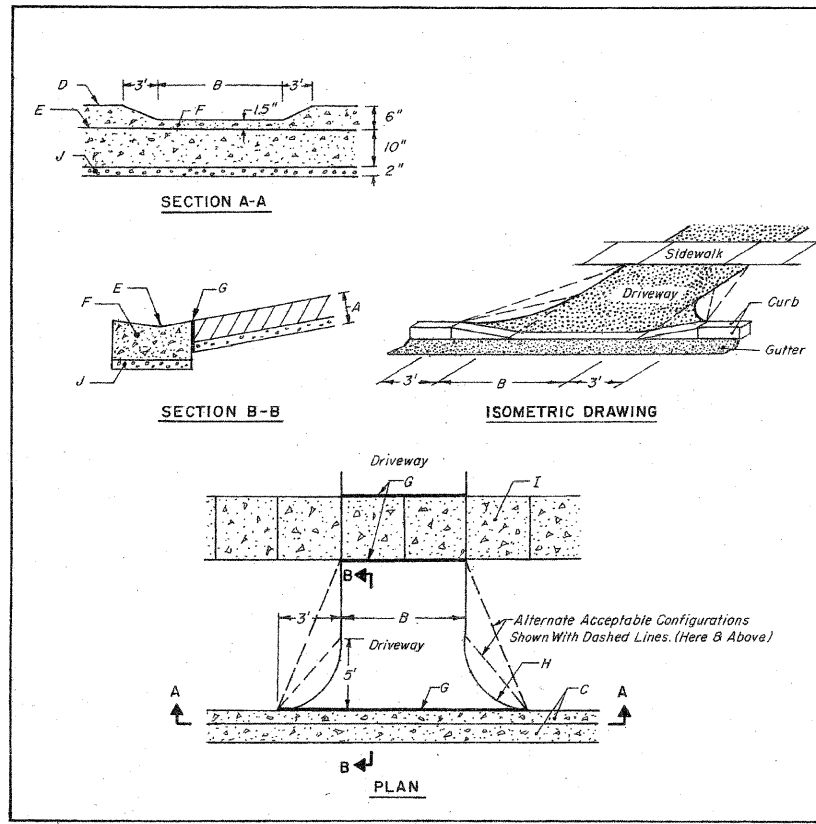
date	OCTOBER 29, 2008	detailed	L.SAUCEDO
designed	M. KUNTZ	checked	A. BRYANT



VILLAGE OF WESTMONT PROPOSED 2008 CMAQ SIDEWALK PROJECT MISCELLANEOUS DETAILS (1 OF 3)			
project	48924	contract	63132
drawing	<b>D101</b>	rev.	-
sheet	9	of	12 sheets
file	48924_DETAILS		

Millimeters  
Scale For Micromiling  
Inches

no.	date	by	ckd	description
-----	------	----	-----	-------------



**CONSTRUCTION NOTES**

- For Concrete Driveways, Min. 5" R.C.C. Over a Min. 2" Compacted Aggregate Base. For Asphalt Driveways, Min. 2" Bituminous Concrete Over a Min. 8" Compacted Aggregate Base.
- Min. Width 9' Max. 20'
- Curb & Gutter
- Top of Curb
- Flow Line of Gutter
- Depressed Type Curb & Gutter
- 3/4" Expansion Joint Required For Concrete Driveways Only.
- 5' Radius
- R.C.C. Sidewalk, See Notes 2 & 3.
- Min. 2" Aggregate Base

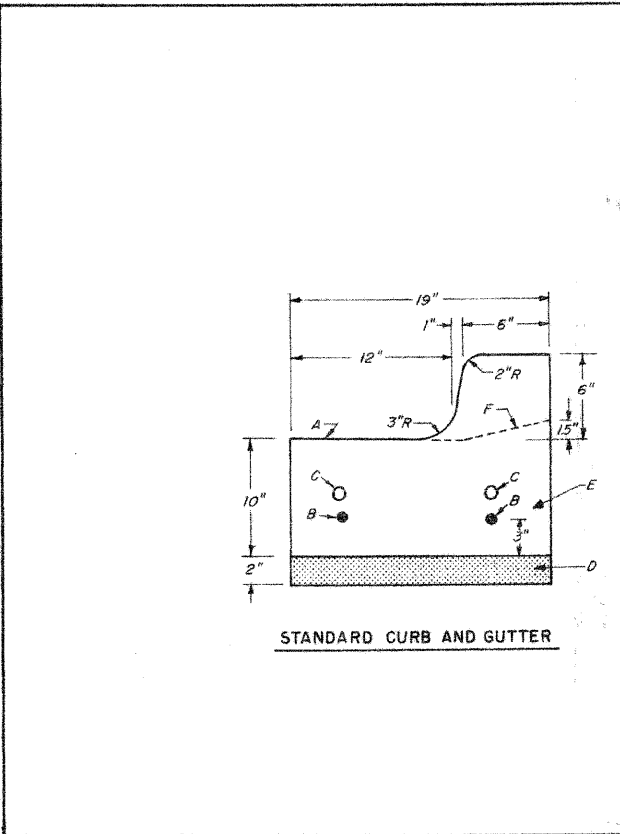
**GENERAL NOTES**

- For Concrete Driveways Wider Than 14', a Contraction Joint Shall be Located Along The Centerline of The Driveway.
- Sidewalk Shall be a Minimum of 5" Thick.
- A Minimum 6-Bag Mix Concrete Shall be Used For Concrete Driveways, Sidewalks, And Curb and Gutter.

**VILLAGE OF WESTMONT  
RESIDENTIAL DRIVEWAY  
DETAIL**

ISSUED: March 1988  
REVISED: August 2002  
August 2003

DWG. R-7-2



**CONSTRUCTION NOTES**

- Slope 3/4"/Ft.
- 2- #4 Bars Continuous, Optional.
- 2 Dowel Bars at Expansion Joints.
- Min. 2" Aggr. Base.
- Min. 6-Bag Mix Concrete.
- Depressed Curb Configuration.

**GENERAL NOTES**

- Standard Curb and Gutter Shall be Used For All New Construction. Roll-Type Curb and Gutter is Not Acceptable.
- Preformed Expansion Joints of 3/4" Thickness Shall be Spaced a Maximum of 40' Apart, and at All Radius Points and 4' Either Side of Inlets.
- Formed or Saw-Cut Contraction Joints Shall be Spaced a Maximum of 10' Apart and Filled with a Silicone Sealant.
- Concrete Barrier-Type Curb and Gutter Shall be Provided for All Parking Lots Accommodating Five (5) or More Parking Spaces.

**VILLAGE OF WESTMONT  
CURB AND GUTTER DETAIL**

ISSUED: March 1988  
REVISED: August 2003

DWG. R-6-1

Millimeters  
 Scale For Micromiling  
 Inches

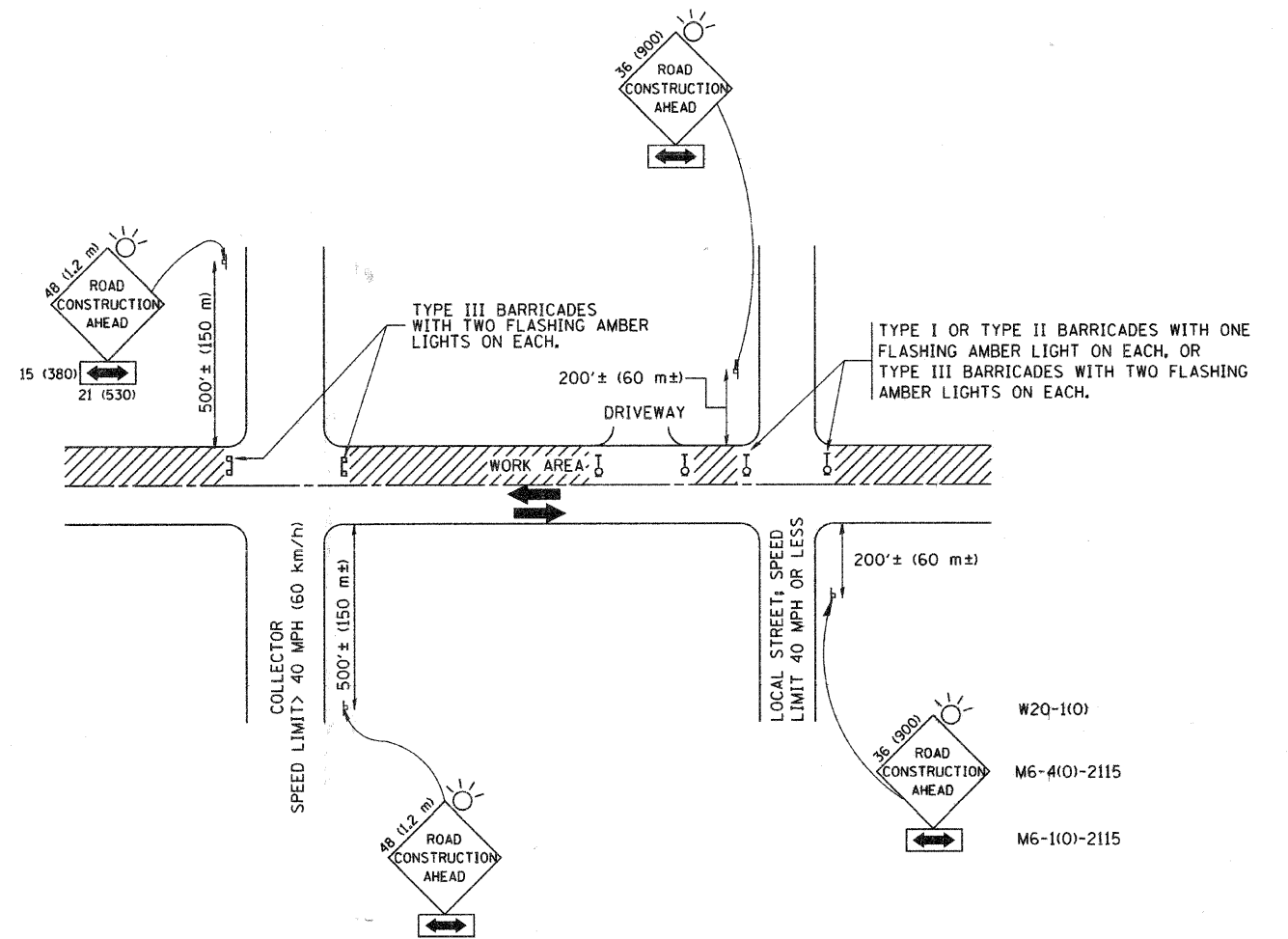


date	OCTOBER 29, 2008	detailed	D. CHAVEZ
designed	M. BERENA	checked	A. BRYANT



VILLAGE OF WESTMONT  
PROPOSED 2008 CMAQ  
SIDEWALK PROJECT  
MISCELLANEOUS DETAILS (2 OF 3)

project	48924	contract	63132
drawing	D102 - rev.		
sheet	10	of	12 sheets
file 48924_DETAILS_2			



TRAFFIC CONTROL AND PROTECTION FOR SIDE ROADS, INTERSECTIONS, AND DRIVEWAYS

NOTES:

A. FOR NO LANE RESTRICTION ON THE SIDE ROAD OR DRIVEWAYS

1. SIDE ROAD WITH A SPEED LIMIT OF 40 MPH (60 km/h) OR LESS AS SHOWN ON THE DRAWING AND AS DIRECTED BY THE ENGINEER:

a) ONE ROAD CONSTRUCTION AHEAD SIGN 36 x 36 (900x900) WITH A FLASHER AND FLAG MOUNTED ON IT APPROXIMATELY 200' (60 m) IN ADVANCE OF THE MAIN ROUTE.

b) THE CLOSED PORTION OF THE MAIN ROUTE SHALL BE PROTECTED BY BLOCKING WITH TYPE I, TYPE II OR TYPE III BARRICADES, 1/3 OF THE CROSS SECTION OF THE CLOSED PORTION.

2. SIDE ROAD WITH A SPEED LIMIT GREATER THAN 40 MPH (60 km/h) AS SHOWN ON THE DRAWING AND AS DIRECTED BY THE ENGINEER:

a) ONE ROAD CONSTRUCTION AHEAD SIGN 48 x 48 (1.2 m x 1.2 m) WITH A FLASHER MOUNTED ON IT APPROXIMATELY 500' (150 m) IN ADVANCE OF THE MAIN ROUTE.

b) THE CLOSED PORTION OF THE MAIN ROUTE SHALL BE PROTECTED BY BLOCKING WITH TYPE III BARRICADES, 1/2 OF THE CROSS SECTION OF THE CLOSED PORTION.

3. WHEN THE SIDE ROAD LIES BETWEEN THE BEGINNING OF THE MAINLINE SIGNING AND THE WORK ZONE, A SINGLE HEADED ARROW (M6-1) SHALL BE USED IN LIEU OF THE DOUBLE HEADED ARROW (M6-4).

B. FOR A LANE CLOSURE ON A SIDE ROAD OR DRIVEWAY:

USE APPLICABLE PORTIONS OF THE TYPICAL APPLICATION OF TRAFFIC CONTROL DEVICES (STD. 701501, STD. 701606 OR THE APPROPRIATE STANDARD). THE SPACING OF SIGNS AND BARRICADES SHALL BE ADJUSTED FOR FIELD CONDITIONS AS DIRECTED BY THE ENGINEER. THE DIRECTIONAL ARROW SHALL BE COVERED OR REMOVED WHEN NO LONGER CONSISTENT WITH THE SIDE ROAD LANE CLOSURE.

C. ADVANCE WARNING SIGNS ARE TO BE OMITTED ON DRIVEWAY UNLESS OTHERWISE NOTED.

D. THE TRAFFIC CONTROL AND PROTECTION FOR SIDE ROADS, INTERSECTIONS, AND DRIVEWAYS SHALL BE INCIDENTAL TO THE COST OF SPECIFIED TRAFFIC CONTROL STANDARDS OR ITEMS.

All dimensions are in millimeters (inches) unless otherwise shown.

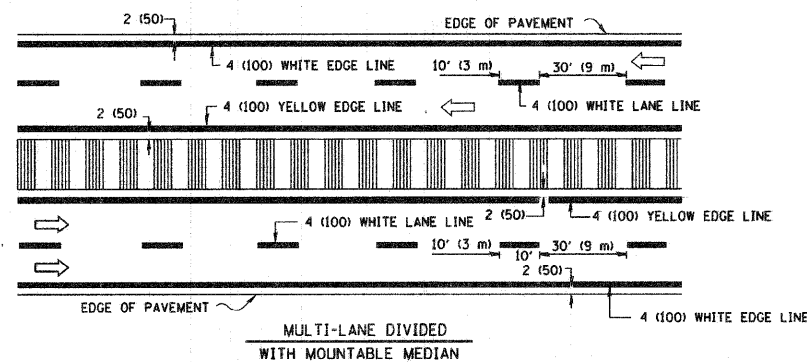
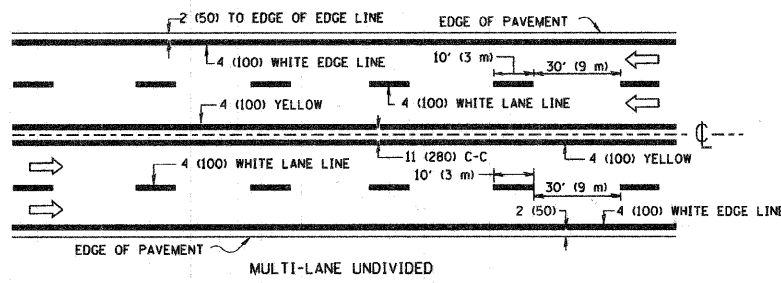
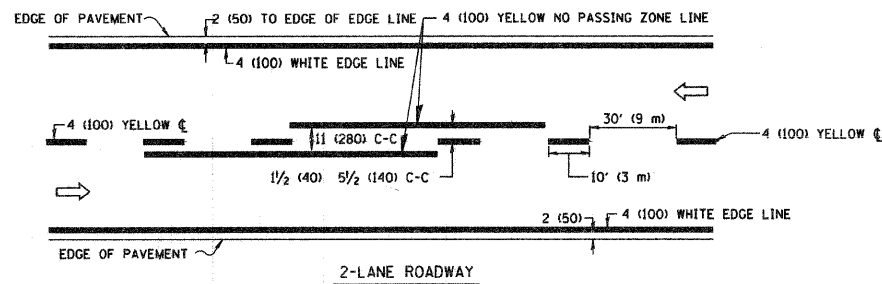
FILE NAME =	USER NAME = geglentobt	DESIGNED - LHA	REVISED - J. OBERLE 10-18-95
W:\diststd\22x34\1c10.dgn		DRAWN -	REVISED - A. HOUSEH 03-06-96
	PLOT SCALE = 50.000' / IN.	CHECKED -	REVISED - A. HOUSEH 10-15-96
	PLOT DATE = 1/4/2008	DATE - 06-89	REVISED - T. RAMMACHER 01-06-00

STATE OF ILLINOIS  
DEPARTMENT OF TRANSPORTATION

TRAFFIC CONTROL AND PROTECTION FOR  
SIDE ROADS, INTERSECTIONS, AND DRIVEWAYS

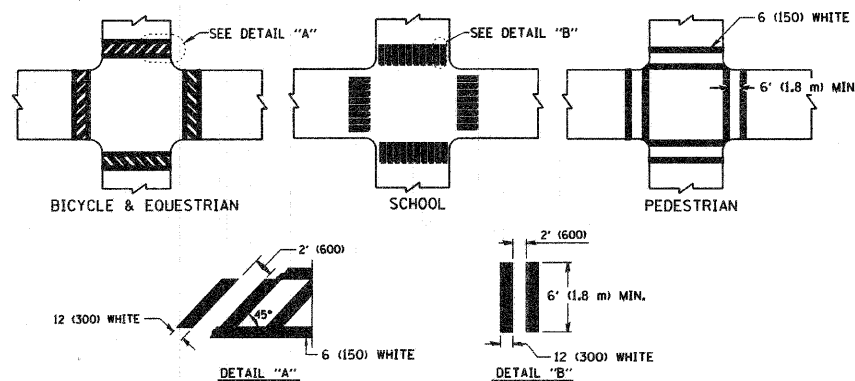
SCALE: NONE SHEET NO. 1 OF 1 SHEETS STA. TO STA.

F.A. RTE.	SECTION	COUNTY	TOTAL SHEETS	SHEET NO.
	08-00098-00-SW	DU PAGE	12	11
TC-10			CONTRACT NO. 63132	
FED. ROAD DIST. NO. 1 ILLINOIS FED. AID PROJECT				

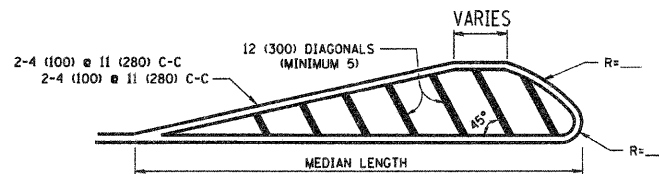
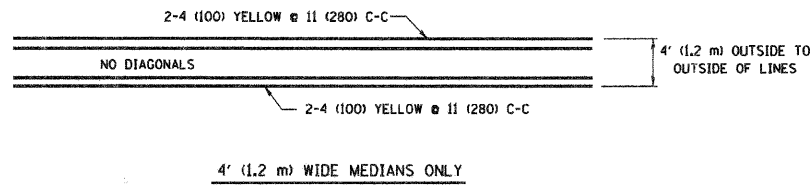


NOTE: MEDIANS WITH BARRIER CURB DO NOT REQUIRE AN EDGE LINE

**TYPICAL LANE AND EDGE LINE MARKING**

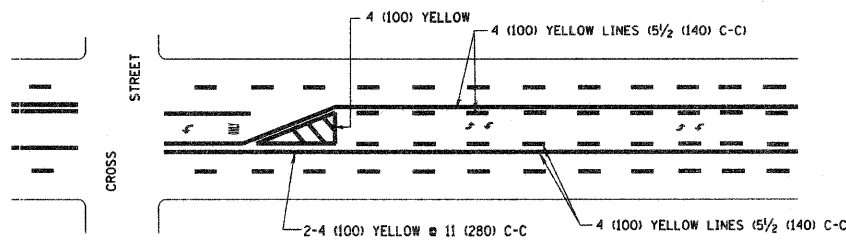


**TYPICAL CROSSWALK MARKING**

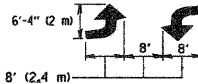


FOR MEDIAN LENGTHS WHERE DIAGONAL SPACING CANNOT BE ATTAINED, USE 5 (FIVE) EQUALLY SPACED DIAGONAL LINES.  
 DIAGONAL LINE SPACING: 50' (15 m) C-C (LESS THAN 30MPH (50 km/h))  
 75' (25 m) C-C 30MPH (50 km/h) TO 45MPH (70 km/h)  
 150' (45 m) C-C (MORE THAN 45MPH (70 km/h))

**MEDIANS OVER 4' (1.2 m) WIDE**

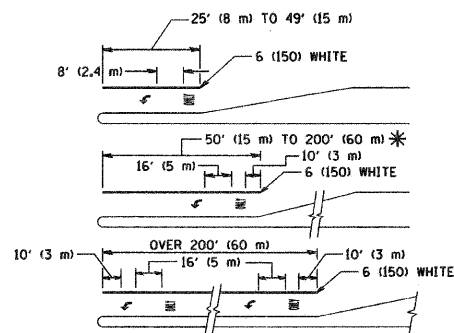


A MINIMUM OF TWO PAIRS OF TURN ARROWS SHALL BE USED, WHITE IN COLOR. ADDITIONAL PAIRS SHALL BE PLACED AT 200' (60 m) TO 300' (90 m) INTERVALS.



**MEDIAN WITH TWO-WAY LEFT TURN LANE**

**TYPICAL PAINTED MEDIAN MARKING**

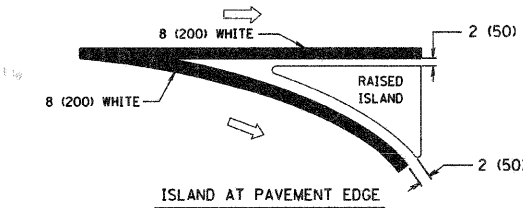
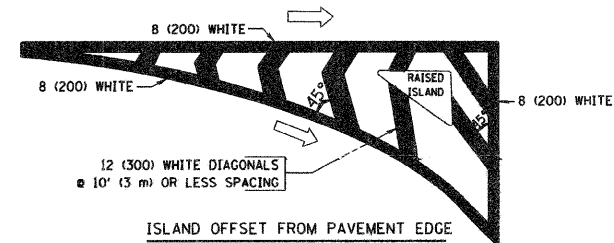


FULL SIZE LETTERS 8' (2.4 m) AND ARROWS SHALL BE USED.  
 AREA = 15.6 SQ. FT. (1.5 m<sup>2</sup>) AREA = 20.8 SQ. FT. (1.9 m<sup>2</sup>)

\* TURN LANES IN EXCESS OF 400' (120 m) IN LENGTH MAY HAVE AN ADDITIONAL SET OF ARROW - "ONLY" INSTALLED MIDWAY BETWEEN THE OTHER TWO SETS OF ARROW - "ONLY".

**TYPICAL LEFT (OR RIGHT) TURN LANE**

**TYPICAL TURN LANE MARKING**



**TYPICAL ISLAND MARKING**

TYPE OF MARKING	WIDTH OF LINE	PATTERN	COLOR	SPACING / REMARKS
CENTERLINE ON 2 LANE PAVEMENT	4 (100)	SKIP-DASH	YELLOW	10' (3 m) LINE WITH 30' (9 m) SPACE
CENTERLINE ON MULTI-LANE UNDIVIDED PAVEMENT	2 @ 4 (100)	SOLID	YELLOW	11 (280) C-C
NO PASSING ZONE LINES: FOR ONE DIRECTION FOR BOTH DIRECTIONS	4 (100) 2 @ 4 (100)	SOLID SOLID	YELLOW YELLOW	5/2 (140) C-C FROM SKIP-DASH CENTERLINE 11 (280) C-C OMIT SKIP-DASH CENTERLINE BETWEEN
LANE LINES	4 (100) 5 (125) ON FREEWAYS	SKIP-DASH SKIP-DASH	WHITE WHITE	10' (3 m) LINE WITH 30' (9 m) SPACE
DOTTED LINES (EXTENSIONS OF CENTER, LANE OR TURN LANE MARKINGS)	SAME AS LINE BEING EXTENDED	SKIP-DASH	SAME AS LINE BEING EXTENDED	2' (600) LINE WITH 6' (1.8 m) SPACE
EDGE LINES	4 (100)	SOLID	YELLOW-LEFT WHITE-RIGHT	OUTLINE MOUNTABLE MEDIANS IN YELLOW; EDGE LINES ARE NOT USED NEXT TO BARRIER CURB
TURN LANE MARKINGS	6 (150) LINE; FULL SIZE LETTERS & SYMBOLS (8' (2.4m))	SOLID	WHITE	SEE TYPICAL TURN LANE MARKING DETAIL
TWO WAY LEFT TURN MARKING	2 @ 4 (100) EACH DIRECTION 8' (2.4m) LEFT ARROW	SKIP-DASH AND SOLID IN PAIRS	YELLOW WHITE	10' (3 m) LINE WITH 30' (9 m) SPACE FOR SKIP-DASH; 5/2 (140) C-C BETWEEN SOLID LINE AND SKIP-DASH LINE SEE TYPICAL TWO-WAY LEFT TURN MARKING DETAIL
CROSSWALK LINES (PEDESTRIAN) A. DIAGONALS (BIKE & EQUESTRIAN) B. LONGITUDINAL BARS (SCHOOL)	2 @ 6 (150) 12 (300) @ 45° 12 (300) @ 90°	SOLID SOLID SOLID	WHITE WHITE WHITE	NOT LESS THAN 6' (1.8 m) APART 2' (600) APART 2' (600) APART SEE TYPICAL CROSSWALK MARKING DETAILS.
STOP LINES	24 (600)	SOLID	WHITE	PLACE 4' (1.2 m) IN ADVANCE OF AND PARALLEL TO CROSSWALK, IF PRESENT. OTHERWISE, PLACE AT DESIRED STOPPING POINT, PARALLEL TO CROSSROAD CENTERLINE, WHERE POSSIBLE
PAINTED MEDIANS	2 @ 4 (100) WITH 12 (300) DIAGONALS @ 45° NO DIAGONALS USED FOR 4' (1.2 m) WIDE MEDIANS	SOLID	YELLOW; TWO WAY TRAFFIC WHITE; ONE WAY TRAFFIC	11 (280) C-C FOR THE DOUBLE LINE SEE TYPICAL PAINTED MEDIAN MARKING.
GORE MARKING AND CHANNELIZING LINES	8 (200) WITH 12 (300) DIAGONALS @ 45°	SOLID	WHITE	DIAGONALS: 15' (4.5 m) C-C (LESS THAN 30MPH (50 km/h)) 20' (6 m) C-C 30MPH (50 km/h) TO 45MPH (70 km/h) 30' (9 m) C-C (OVER 45MPH (70 km/h))
RAILROAD CROSSING	24 (600) TRANSVERSE LINES; "RR" IS 6' (1.8 m) LETTERS; 16 (400) LINE FOR "X"	SOLID	WHITE	SEE STATE STANDARD 780001 AREA OF: "R"=3.6 SQ. FT. (0.33 m <sup>2</sup> ) EACH "X"=54.0 SQ. FT. (5.0 m <sup>2</sup> )
SHOULDER DIAGONALS	12 (300) @ 45°	SOLID	WHITE - RIGHT YELLOW - LEFT	50' (15 m) C-C (LESS THAN 30MPH (50 km/h)) 75' (25 m) C-C (30 MPH (50 km/h) TO 45MPH (70 km/h)) 150' (45 m) C-C (OVER 45MPH (70 km/h))

FOR FURTHER DETAILS ON PAVEMENT MARKING REFER TO STANDARD SPECIFICATIONS FOR ROAD AND BRIDGE CONSTRUCTION AND STATE STANDARD 780001.

All dimensions are in inches (millimeters) unless otherwise shown.

FILE NAME = W:\dstate\22x34\1013.dgn	USER NAME = gaglanobt	DESIGNED - EVERS	REVISED -T, RAMMACHER 10-27-94
		DRAWN -	REVISED -A. HOUSEH 10-09-96
	PLOT SCALE = 50.000' / IN.	CHECKED -	REVISED -A. HOUSEH 10-17-96
	PLOT DATE = 1/4/2008	DATE - 03-19-90	REVISED -T, RAMMACHER 01-06-00

**STATE OF ILLINOIS  
DEPARTMENT OF TRANSPORTATION**

DISTRICT ONE		F.A. RTE.	SECTION	COUNTY	TOTAL SHEETS	SHEET NO.
TYPICAL PAVEMENT MARKINGS			08-00098-Q0-SW	DUI PAGR	14	12
SCALE: NONE		SHEET NO. 1 OF 1 SHEETS		STA.	TO STA.	
		TC-13		CONTRACT NO. 63132		
FED. ROAD DIST. NO. 1 ILLINOIS FED. AID PROJECT						