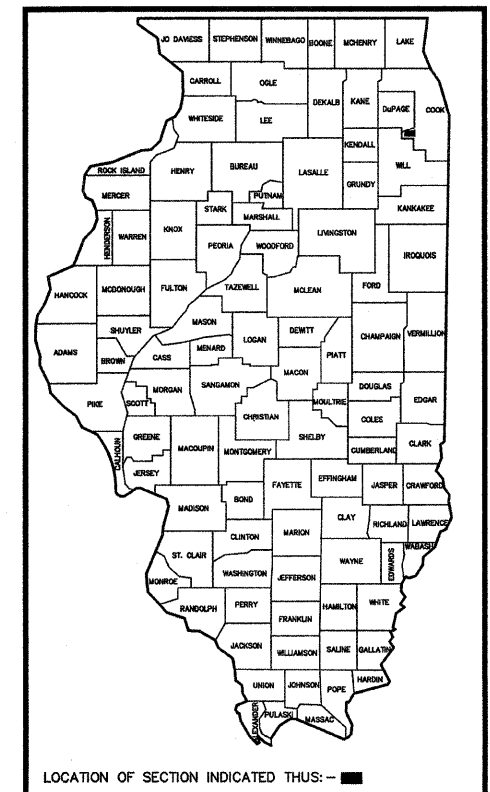


FAU RTE	SECTION	COUNTY	TOTAL SHEETS	SHEET NO.
FAU 1024	08-00040-00-RS	COOK	12	1
F.H.W.A. REG.	ILLINOIS PROJECT	M-8003(975)		

CONTRACT NO. 63136

STATE OF ILLINOIS DEPARTMENT OF TRANSPORTATION DIVISION OF HIGHWAYS PLANS FOR PROPOSED FEDERAL AID HIGHWAY

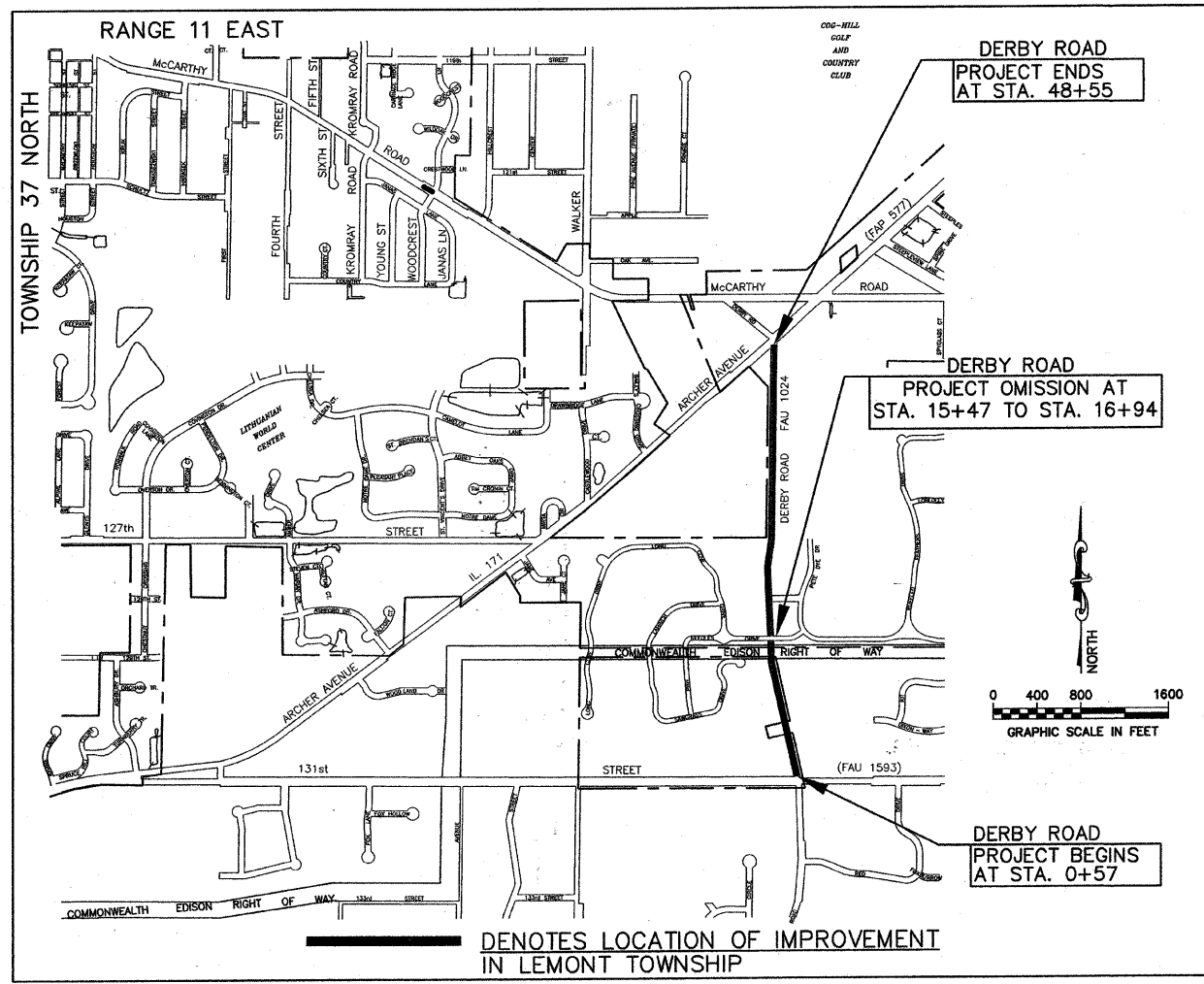
DERBY ROAD (FAU ROUTE 1024)
FROM 131ST ST. (FAU 1593) TO ARCHER AVE. (FAP 577)
LAPP RESURFACING
FEDERAL PROJECT M-8003 (975)
SECTION NO. 08-00040-00-RS
VILLAGE OF LEMONT
COOK COUNTY
JOB NO. C-91-353-08



- ### INDEX TO SHEETS
- 1.) COVER SHEET, INDEX OF SHEETS, LOCATION MAP, INDEX OF STATE STANDARDS
 - 2.) CONSTRUCTION NOTES, SUMMARY OF QUANTITIES
 - 3.) TYPICAL CROSS SECTIONS, HOT-MIX ASPHALT MIXTURE REQUIREMENT, TYPICAL DRIVEWAY DETAIL
 - 4.) PLAN: DERBY RD. - 131ST ST. TO STA. 22+00
 - 5.) PLAN: DERBY RD. - STA. 22+00 TO ARCHER AVENUE
 - 6.) STRIPING PLAN: DERBY RD. - 131ST ST. TO STA. 22+00
 - 7.) STRIPING PLAN: DERBY RD. - STA. 22+00 TO ARCHER AVENUE
 - 8.) DISTRICT ONE TYPICAL PAVEMENT MARKINGS
 - 9.) PAVEMENT MARKING LETTERS AND SYMBOLS FOR TRAFFIC STAGING
 - 10.) TRAFFIC CONTROL AND PROTECTION FOR SIDEROADS, INTERSECTIONS, AND DRIVEWAYS
 - 11.) SIGNING FOR FLAGGING OPERATION AT WORK ZONE OPENINGS
 - 12.) BUTT JOINT AND HOT-MIX ASPHALT TAPER DETAILS

STATE STANDARDS

- 000001-05 STANDARDS SYMBOLS, ABBREVIATIONS, AND PATTERNS
- 442201-03 CLASS C AND D PATCHES
- 701301-03 LANE CLOSURE, 2 L, 2 W, SHORT TIME OPERATIONS
- 701501-05 URBAN LANE CLOSURE, 2 L, 2 W UNDIVIDED
- 701901-01 TRAFFIC CONTROL DEVICES
- 780001-02 TYPICAL PAVEMENT MARKINGS
- 781001-03 TYPICAL APPLICATIONS RAISED REFLECTIVE PAVEMENT MARKERS



DENOTES LOCATION OF IMPROVEMENT
IN LEMONT TOWNSHIP

LOCATION MAP

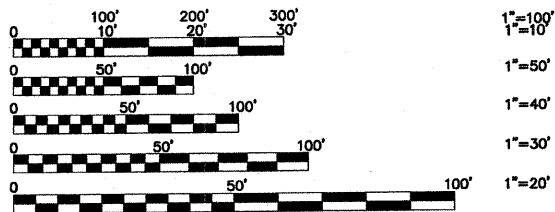
LENGTH OF PROJECT

GROSS LENGTH OF PROJECT	4798 FEET (0.9087 MILES)
PROJECT OMISSION	147 FEET (0.0278 MILES)
NET LENGTH OF PROJECT	4651 FEET (0.8809 MILES)

FIELD ENGINEER: MELCHOR MANGOBA (847)705-4408
CONSULTANT: FRANK NOVOTNY AND ASSOCIATES, INC. (630)887-8640

CONTRACT NO. 63136

REVISIONS			
NO.	BY	DATE	DESCRIPTION
1	THK	1-16-09	PER I.D.O.T. REVIEW
2	THK	1-28-09	PER I.D.O.T. REVIEW
3	THK	2-05-09	PER I.D.O.T. REVIEW



FULL SIZE PLANS HAVE BEEN PREPARED USING STANDARD ENGINEERING SCALES. REDUCED SIZED PLANS WILL NOT CONFORM TO STANDARD SCALES. IN MAKING MEASUREMENTS ON REDUCED PLANS, THE ABOVE SCALES MAY BE USED.

STATE OF ILLINOIS
DEPARTMENT OF TRANSPORTATION
DIVISION OF HIGHWAYS

APPROVED: February 5 20 09

VILLAGE PRESIDENT: [Signature]

PASSED: FEBRUARY 13, 2009
[Signature]
DISTRICT #1 ENGINEER OF LOCAL ROADS & STREETS

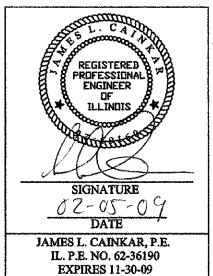
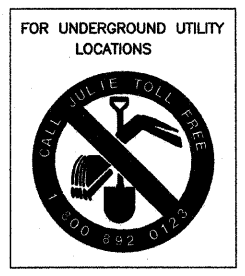
RELEASING FOR BID
BASED ON LIMITED
REVIEW: FEBRUARY 13, 2009
[Signature]
DEPUTY DIRECTOR OF HIGHWAYS, REGION #1 ENGINEER

PROJECT LOCATED IN THE
VILLAGE OF LEMONT

PRINTED BY THE AUTHORITY
OF THE STATE OF ILLINOIS

SEE SHEET 3 FOR
DESIGN DETAILS

TRAFFIC DATA:
ADT (2007): 7,900
POSTED SPEED LIMIT = 35 MPH
DESIGN SPEED LIMIT = 35 MPH



Frank Novotny & Associates, Inc.
825 Midway Drive • Willowbrook, IL • 60527 • Telephone: (630) 887-8640 • Fax: (630) 887-0132
ILLINOIS PROFESSIONAL DESIGN FIRM NO. 184-000928

FNA JOB # 05471