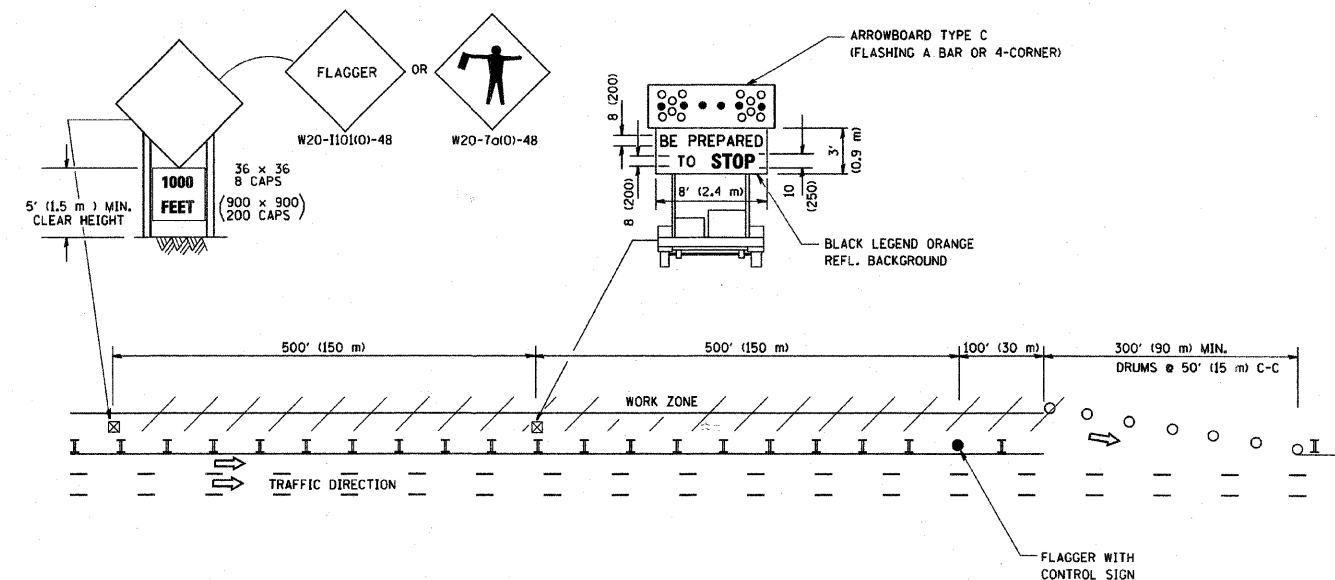


FAU RTE	SECTION	COUNTY	TOTAL SHEETS	SHEET NO.
FAU 1024	08-00040-00-RS	COOK	12	11
F.H.W.A. REG.	ILLINOIS PROJECT	M-8003(975)		

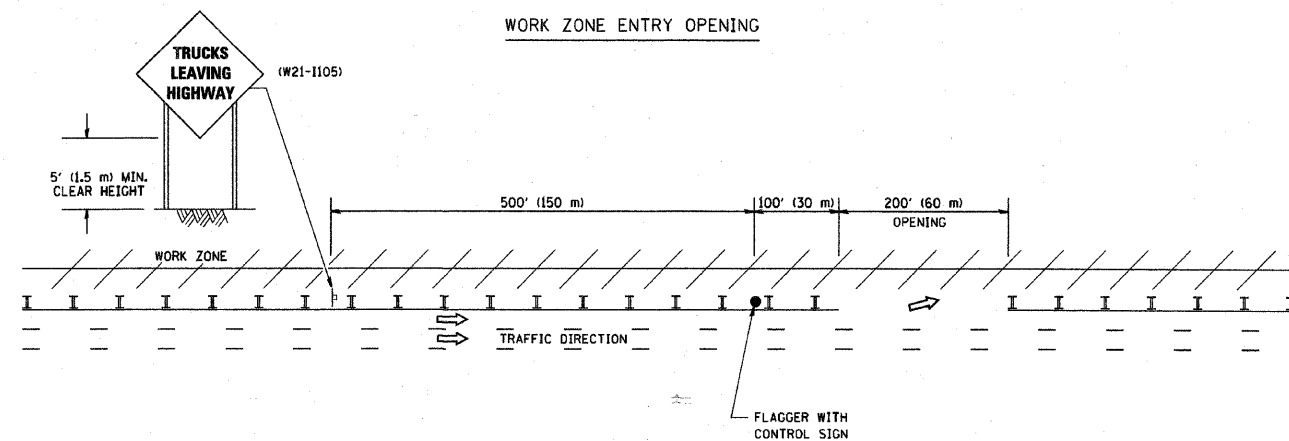
CONTRACT NO. 63136

SIGNING FOR FLAGGING OPERATIONS AT WORK ZONE OPENINGS

WORK ZONE EXIT OPENING



WORK ZONE ENTRY OPENING



NOTES:

- The Arrowboard, the Flagger Ahead trailer mounted sign, and the Trucks Leaving Highway sign shall be removed or turned away from traffic and the exit and entry openings shall be closed when the flagging operation ceases.
- Work Zone Exit Openings should be a minimum of one half mile apart.
- Exiting the work zone at any place other than at a Work Zone Exit Opening will be prohibited.
- All vehicles shall enter the work zone at entry openings, using their turn signals to warn motorists

ALL DIMENSIONS ARE IN INCHES (MILLIMETERS) UNLESS OTHERWISE SHOWN

REVISIONS	
NO.	DATE
DWS	8/98
JAF	4/03
JAF	2/06
SPB	1/07

ILLINOIS DEPARTMENT OF TRANSPORTATION
SIGNING FOR FLAGGING OPERATIONS AT WORK ZONE OPENINGS

SCALE: NONE

DRAWN BY CADD
CHECKED BY TC-18

PLOT DATE = 3/7/2007
FILE NAME = K:\dms\10\1018.dgn
PLOT SCALE = 1/8" = 1' IN.
USER NAME = bbarndt



Frank Novotny & Associates, Inc.

825 Midway Drive • Willowbrook, IL • 60527 • Telephone: (630) 887-8640 • Fax: (630) 887-0132
Illinois Professional Design Firm No. 184-000928

PROJECT

VILLAGE OF LEMONT, ILLINOIS
DERBY ROAD LAPP RESURFACING
SECTION 08-00040-00-RS

REVISIONS			
NO.	BY	DATE	DESCRIPTION

SIGNING FOR FLAGGING OPERATIONS AT WORK ZONE OPENINGS

PROJECT NO. 054-71	SCALE NONE	SHEET 11
DRAWN/DESIGNED JEP/THK	DATE DEC., 2008	OF 12
CHECKED/APPROVED JFP/JLC	FIELD BOOK NO. FILE	SHEETS