

F.A. RTE.	SECTION	COUNTY	TOTAL SHEETS	SHEET NO.
	08-00075-00-RS	MCHEMRY	35	1
FED. ROAD DIST. NO.	ILLINOIS	CONTRACT NO. 63138		

STATE OF ILLINOIS DEPARTMENT OF TRANSPORTATION DIVISION OF HIGHWAYS PLANS FOR PROPOSED FEDERAL AID HIGHWAY

VILLAGE OF ALGONQUIN
McHENRY COUNTY
C-91-206-09

L.A. SECTION NO. 08-00075-00-RS
PROJECT No. M-9003(174)
RESURFACING

SQUARE BARN ROAD (FAU 3866) (VILLAGE LIMITS TO ALGONQUIN ROAD (FAU 3878)),
HANSON ROAD (FAU 4011) (HUNTINGTON DRIVE (FAU 94013) TO ALGONQUIN ROAD (FAU 3878)),
HUNTINGTON DRIVE (FAU 4013) (GOLDEN EAGLE DRIVE (FAU 94013) TO STONEGATE ROAD (FAU 1889)),
SANDBLOOM ROAD (FAU 4005) (VILLAGE LIMITS TO ALGONQUIN ROAD (FAU 3878))

INDEX OF SHEETS

DESCRIPTION	SHEET NO.
TITLE SHEET	1
SUMMARY OF QUANTITIES	2
GENERAL NOTES AND IDOT STANDARDS	3
EXISTING TYPICAL SECTIONS	4-7
PROPOSED TYPICAL SECTIONS	8-11
EXISTING CONDITIONS AND REMOVAL PLAN	12-20
PROPOSED PLAN	21-29
CONSTRUCTION DETAILS	30
BUTT JOINT AND HMA TAPER DETAILS	31
CURB OR CURB AND GUTTER REMOVAL AND REPLACEMENT	32
DISTRICT ONE TYPICAL PAVEMENT MARKINGS	33
TRAFFIC CONTROL AND PROTECTION FOR SIDE ROADS, INTERSECTIONS, AND DRIVEWAYS	34
PAVEMENT MARKING LETTERS AND SYMBOLS FOR TRAFFIC STAGING	35

PROJECT ENDS
STA. 315 + 00

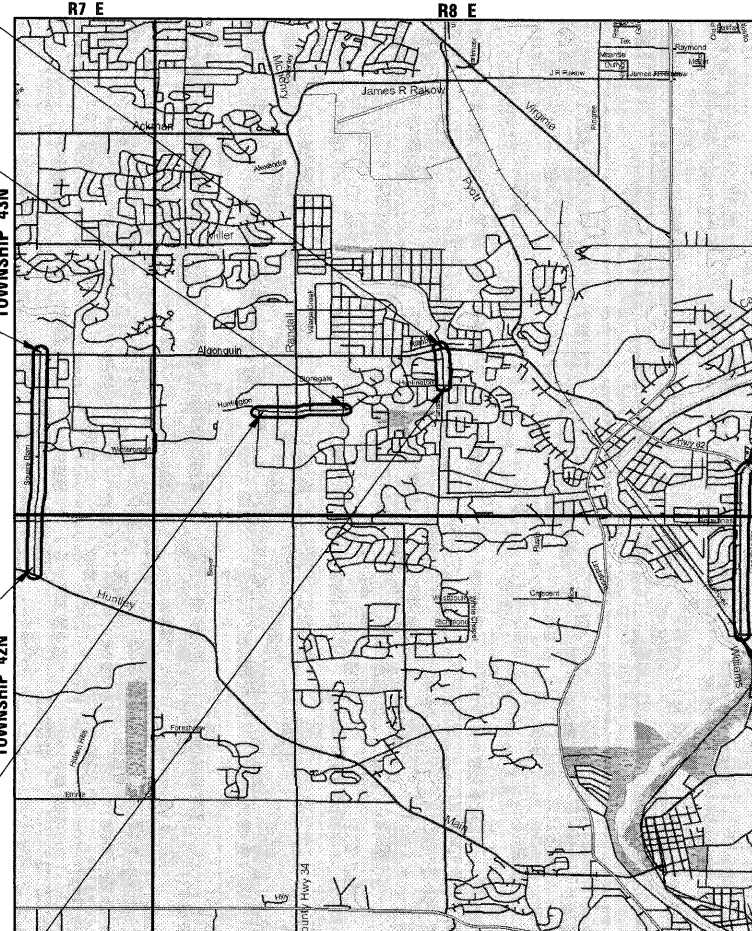
PROJECT ENDS
STA. 282 + 80

PROJECT ENDS
STA. 202 + 00

PROJECT BEGINS
STA. 122 + 00

PROJECT BEGINS
STA. 251 + 11.2

PROJECT BEGINS
STA. 304 + 80



LOCATION MAP

PROJECT ENDS
STA. 477 + 50

TRAFFIC DATA

SQUARE BARN ROAD
ADT (2008) = 12,045
SPEED LIMIT = 40 MPH

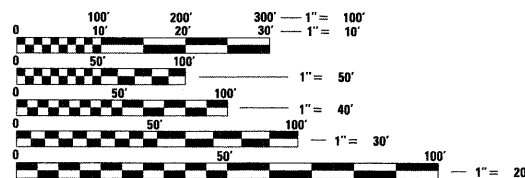
HANSON ROAD
ADT (2008) = 9,425
SPEED LIMIT = 30 MPH

HUNTINGTON DRIVE
ADT (2008) = 7,100
SPEED LIMIT = 30 MPH

SANDBLOOM ROAD
ADT (2008) = 13,325
SPEED LIMIT
(ALGONQUIN RD TO COMPTON AVE) = 35 MPH
(COMPTON AVE TO BOLZ RD) = 40 MPH

DESIGN DESIGNATION: COLLECTOR

PROJECT BEGINS
STA. 411 + 50



FULL SIZE PLANS HAVE BEEN PREPARED USING STANDARD ENGINEERING SCALES. REDUCED SIZED PLANS WILL NOT CONFORM TO STANDARD SCALES. IN MAKING MEASUREMENTS ON REDUCED PLANS, THE ABOVE SCALES MAY BE USED.

J.U.L.I.E.
JOINT UTILITY LOCATION INFORMATION FOR EXCAVATION
8-1-1 OR 1-800-892-0123

CONTRACT NO. 63138

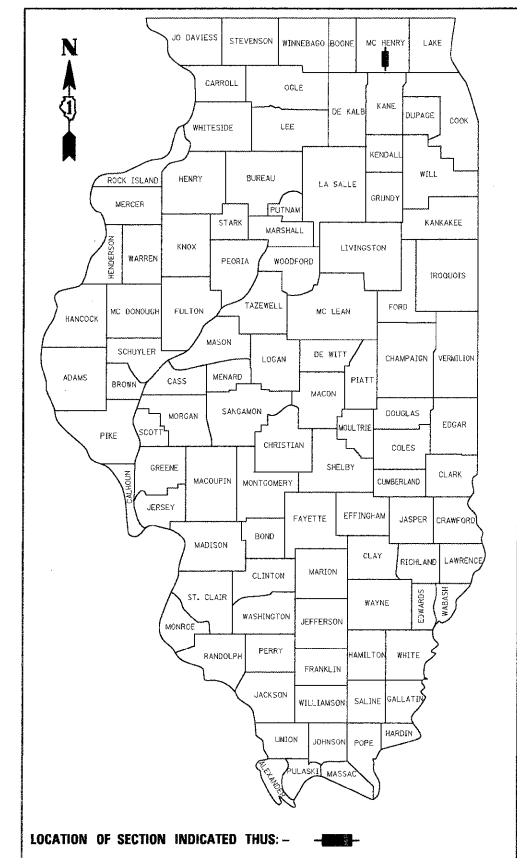
CB **CHRISTOPHER B. BURKE** ENGINEERING LTD.
9575 West Higgins Road, Suite 600
Rosemont, Illinois 60018 (847) 823-0500

SQUARE BARN ROAD
GROSS LENGTH OF PROJECT = 8,000 LINEAL FEET (1.52 MILES)
NET LENGTH OF PROJECT = 8,000 LINEAL FEET (1.52 MILES)

HANSON ROAD
GROSS LENGTH OF PROJECT = 1,020 LINEAL FEET (0.19 MILES)
NET LENGTH OF PROJECT = 1,020 LINEAL FEET (0.19 MILES)

HUNTINGTON DRIVE
GROSS LENGTH OF PROJECT = 3,170 LINEAL FEET (0.60 MILES)
NET LENGTH OF PROJECT = 3,170 LINEAL FEET (0.60 MILES)

SANDBLOOM ROAD
GROSS LENGTH OF PROJECT = 6,600 LINEAL FEET (1.25 MILES)
NET LENGTH OF PROJECT = 6,600 LINEAL FEET (1.25 MILES)



LOCATION OF SECTION INDICATED THUS: -

STATE OF ILLINOIS
DEPARTMENT OF TRANSPORTATION
DIVISION OF HIGHWAYS

APPROVED: *January 28, 2009*
[Signature]
PUBLIC WORKS DIRECTOR, VILLAGE OF ALGONQUIN

PASSED: *February 18, 2009*
[Signature]
DISTRICT 1 ENGINEER OF LOCAL ROADS AND STREETS

RELEASING FOR
BID BASED ON
LIMITED REVIEW: *February 18, 2009*
[Signature]
DEPUTY DIRECTOR OF HIGHWAYS, REGION ONE ENGINEER

LEE M. FELL
ILLINOIS REGISTRATION No. 062-053708
EXPIRATION DATE: 11/30/2009

[Signature] 2/14/09
ENGINEER DATE

FIELD ENGINEER: KEVIN STALLWORTH 847-705-4169