

**CONSTRUCTION PROCEDURES**

**STAGE I (BEFORE PAVEMENT MILLING)**

- A) REMOVE A MINIMUM OF 12" OF THE PAVEMENT FROM AROUND THE STRUCTURE.
- B) REMOVE THE EXISTING FRAME AND LID FROM THE STRUCTURE.
- C) COVER THE STRUCTURE OPENING WITH A 36" DIAMETER METAL PLATE.
- D) BACKFILL WITH CRUSHED STONE AND A MINIMUM 1 1/2" THICK HOT-MIX MATERIAL APPROVED BY THE ENGINEER.

**STAGE II (AFTER PAVEMENT MILLING)**

- A) REMOVE THE HOT-MIX MATERIAL AND CRUSHED STONE.
- B) INSTALL THE FRAME AND LID; ADJUST THE FRAME TO ITS FINAL SURFACE ELEVATION.
- C) THE SURROUNDING SPACE SHALL BE FILLED WITH CLASS SI CONCRETE TO THE ELEVATION OF THE SURFACE OF THE EXISTING BASE COURSE.

THE PROCEDURE EXPLAINED ABOVE SHALL CONFORM TO THE APPLICABLE PORTIONS OF SECTIONS 353, 406, 602 AND 603 OF THE STANDARD SPECIFICATIONS.

**LOCATION OF STRUCTURES**

THE CONTRACTOR WILL BE REQUIRED TO KEEP A RECORD OF THE LOCATIONS OF THE BURIED STRUCTURES ACCORDING TO THE STATION AND DISTANCE LEFT OR RIGHT OF THE CENTERLINE OF PAVEMENT. UPON COMPLETION OF THE WORK, THE CONTRACTOR WILL DELIVER THE RECORD TO THE ENGINEER.

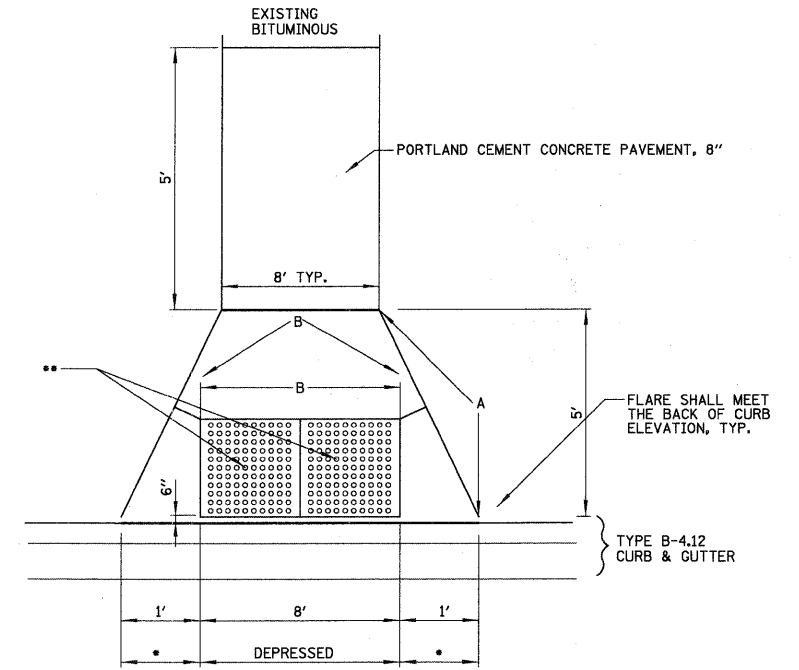
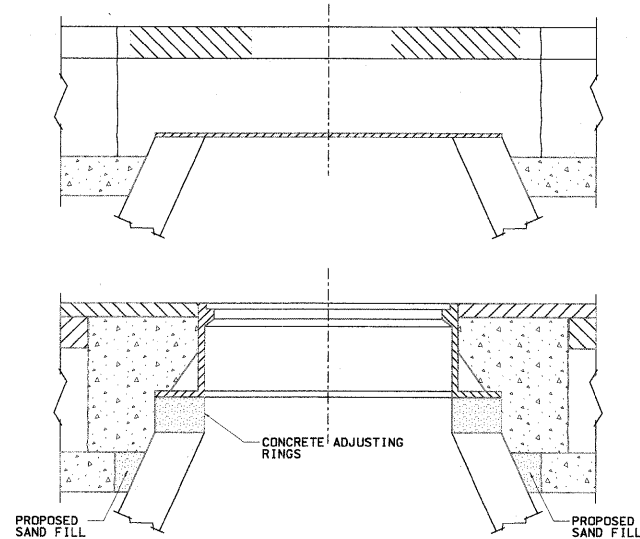
**BASIS OF PAYMENT**

STRUCTURE TO BE ADJUSTED.

**NOTES**

1. EXISTING BROKEN FRAMES AND LIDS SHALL BE REMOVED AND DISPOSED OF BY THE CONTRACTOR AND SHALL BE REPLACED AS DIRECTED BY THE ENGINEER. REPLACEMENT FRAMES AND LIDS WILL BE PAID FOR IN ACCORDANCE WITH ARTICLE 109.04 OF THE STANDARD SPECIFICATIONS UNLESS A SEPARATE PAY ITEM HAS BEEN PROVIDED.
2. IF THE EXISTING LIDS ARE OPEN, THE FRAME WILL BE ADJUSTED TO THE ELEVATION OF THE MILLED PAVEMENT SURFACE PRIOR TO THE MILLING OPERATION. THE FRAME WILL NOT BE REMOVED AND COVERED BY THE METAL PLATE.
3. THE METAL PLATE USED TO COVER THE STRUCTURE SHALL REMAIN THE PROPERTY OF THE CONTRACTOR.
4. EXTERNAL MANHOLE CHIMNEY SEAL SHALL BE PROVIDED AND SHALL CONSIST OF A RUBBER SLEEVE, COMPRESSION BAND AND EXTENSION SKIRT. RUBBER SLEEVE SHALL BE HIGH GRADE RUBBER COMPOUND CONFORMING TO ASTM C293 WITH A HARDNESS OF 45 PLUS OR MINUS 5. COMPRESSION BANDS SHALL BE 16 GAUGE TYPE 304 STAINLESS STEEL WITH A MINIMUM WIDTH OF 1 INCH. EXTENSION WEIGHT OF 12 OUNCES PER SQUARE YARD. EXTERNAL MANHOLE CHIMNEY SEAL SHALL BE MANUFACTURED BY CANUSA, INFISHIELD OR APPROVED EQUAL.

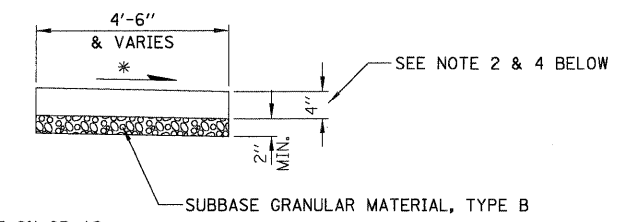
**DETAILS FOR FRAMES AND LIDS ADJUSTMENT WITH MILLING**



- 1' TRANSITION FROM DEPRESSED CURB AND GUTTER TO FULL HEIGHT CURB AND GUTTER
- EAST JORDAN IRON WORKS (EJIW) OR APPROVED EQUAL DETECTABLE WARNING PLATES PRODUCT # 00700542 DIPPED (SEE DETAIL), COLOR SELECTED BY VILLAGE
- A = 1/2" PREFORMED EXPANSION JOINT (TYP.)
- B = TOOLED OR SAWED CONTRACTION JOINT

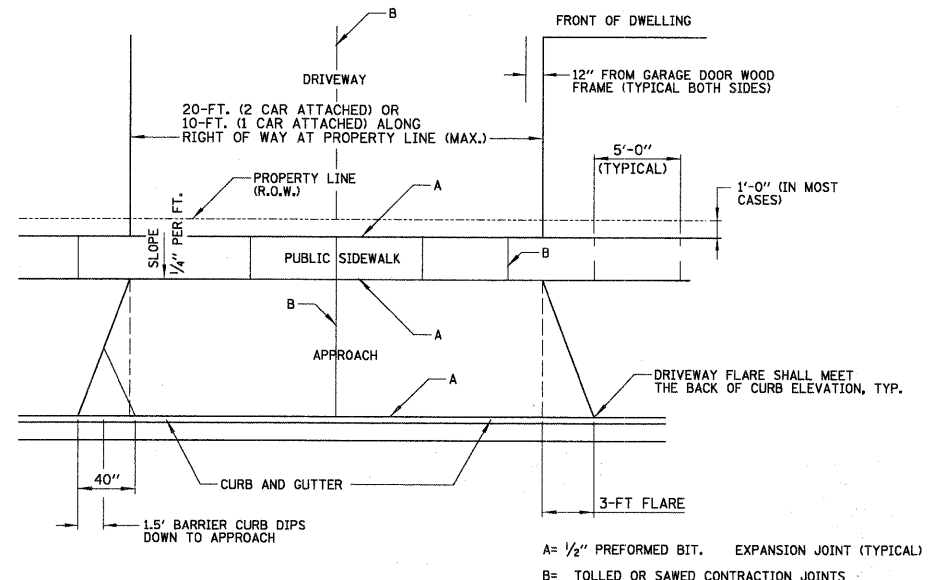
**ADA RAMP AT BIKE PATH**

NOT TO SCALE



- CROSS SLOPE 2% OR AS SHOWN ON CROSS SECTIONS
- 1. ALL REQUIRED EARTH EXCAVATION TO CONSTRUCT P.C.C. SIDEWALK SHALL BE INCIDENTAL TO THE P.C.C. SIDEWALK 4 INCH, REMOVE AND REPLACE
- 2. WHEN FORMS ARE REMOVED FROM THE SIDEWALK EITHER THE SIDEWALK SHALL BE BARRICADED OR BACKFIELD WITHIN 24 HOURS.
- 3. SALT TOLERANT SOD AND TOPSOIL, 4" (100) RESTORATION WILL NOT BE PAID FOR SEPARATELY, BUT SHALL BE INCLUDED IN THE COST OF SIDEWALK REMOVAL AND REPLACEMENT.
- 4. PUBLIC SIDEWALK SHALL BE 6" AT RESIDENTIAL DRIVEWAYS AND 8" AT COMMERCIAL/INDUSTRIAL DRIVEWAYS.

**P.C.C. SIDEWALK DETAIL**



**DRIVEWAY WITH A CURB AND GUTTER**

- GENERAL NOTES:**
1. DRIVEWAY SHALL HAVE A MIN. SLOPE OF 2% AND MAX. SLOPE OF 6%.
  2. APPROACH SHALL HAVE A MIN. SLOPE OF 2% AND MAX. OF 6%.
  3. ALL AGGREGATE SUB-BASE SHALL BE MECHANICALLY COMPACTED, (95% PROCTOR)
  4. PUBLIC SIDEWALK SHALL BE 6" AT RESIDENTIAL DRIVEWAYS AND 8" AT COMMERCIAL/INDUSTRIAL DRIVEWAYS. (NO WIRE MESH)
  5. MINIMUM THICKNESS FOR APPROACH, (NO WIRE MESH), THIS WILL BE PAID FOR BY THE FOLLOWING ITEMS:
    - A. 7" THK. P.C. CONCRETE ON 2" AGGREGATE BASE COURSE TYPE B OR
    - B. 3" THK. HOT-MIX ASPHALT SURFACE, MIX "D" NSO ON 6" AGGREGATE BASE COURSE TYPE B
  6. SALT TOLERANT SOD AND TOPSOIL, 4" (100) RESTORATION WILL NOT BE PAID FOR SEPARATELY, BUT SHALL BE INCLUDED IN THE COST OF DRIVEWAY REMOVAL AND REPLACEMENT.

STATE OF ILLINOIS  
DEPARTMENT OF TRANSPORTATION

CONSTRUCTION DETAILS

|  |                      |                  |           |
|--|----------------------|------------------|-----------|
| FILE NAME =  | USER NAME = MAGOLDEN | DESIGNED - LMF   | REVISED - |
| N:\ALCONQUIN\070273\070273.00019\Civil\070273_00019-01.dwg |                      | DRAWN - MDH      | REVISED - |
| PLOT SCALE = 5'  |                      | CHECKED - LMF    | REVISED - |
| PLOT DATE = 2/13/2009                                      |                      | DATE - 2/13/2009 | REVISED - |

|  |                |         |              |           |
|--|----------------|---------|--------------|-----------|
| F.A. RTE.  | SECTION        | COUNTY  | TOTAL SHEETS | SHEET NO. |
|  | 08-00075-00-RS | MCHENRY | 35           | 30        |
| CONTRACT NO. 63138   |                |         |              |           |
| SCALE: 5' SHEET NO. OF SHEETS STA. TO STA. FED. ROAD DIST. NO. 1 ILLINOIS FED. AID PROJECT |                |         |              |           |