

PROP. CURVE PRPING-1

PI STA. = 14+66.24
 $\Delta = 5^\circ 21' 38''$ (LT)
 $D = 3^\circ 33' 31''$
 $R = 1,610.00'$
 $T = 75.37'$
 $L = 150.63'$
 $E = 1.76'$
 $e = N/A$
 $T.R. = N/A$
 $S.E. = N/A$
 $P.C. STA. = 13+90.87$
 $N = 2,030,287.97$
 $E = 994,254.89$
 $P.I. STA. = 14+66.19$
 $N = 2,030,363.34$
 $E = 994,253.98$
 $P.T. STA. = 15+41.50$
 $N = 2,030,438.29$
 $E = 994,246.04$

PROP. CURVE PRPING-2

PI STA. = 17+88.61
 $\Delta = 7^\circ 06' 55''$ (RT)
 $D = 4^\circ 40' 38''$
 $R = 1,225.00'$
 $T = 76.16'$
 $L = 152.13'$
 $E = 2.37'$
 $e = N/A$
 $T.R. = N/A$
 $S.E. = N/A$
 $P.C. STA. = 17+12.45$
 $N = 2,030,608.28$
 $E = 994,228.02$
 $P.I. STA. = 17+88.52$
 $N = 2,030,684.02$
 $E = 994,219.99$
 $P.T. STA. = 18+64.58$
 $N = 2,030,760.17$
 $E = 994,221.40$

PROP. CURVE PRPING-3

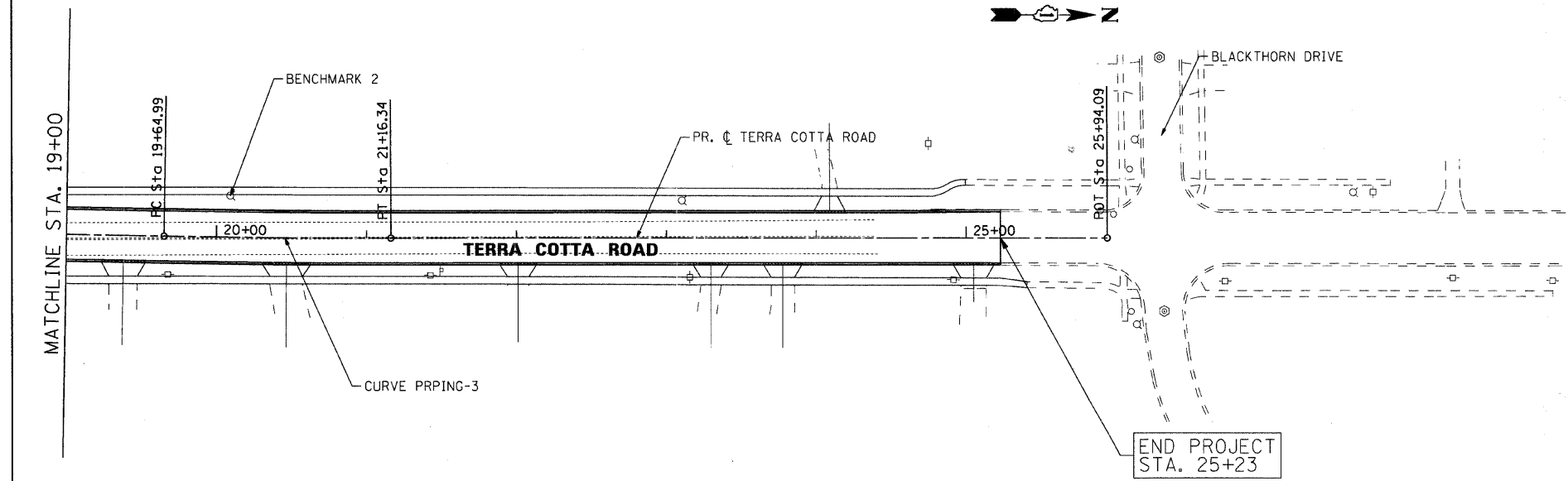
PI STA. = 20+40.67
 $\Delta = 1^\circ 09' 22''$ (LT)
 $D = 0^\circ 45' 50''$
 $R = 7,500.00'$
 $T = 75.67'$
 $L = 151.34'$
 $E = 0.38'$
 $e = N/A$
 $T.R. = N/A$
 $S.E. = N/A$
 $P.C. STA. = 19+64.99$
 $N = 2,030,860.57$
 $E = 994,223.27$
 $P.I. STA. = 20+40.66$
 $N = 2,030,936.23$
 $E = 994,224.68$
 $P.T. STA. = 21+16.34$
 $N = 2,030,011.90$
 $E = 994,224.56$

BENCHMARKS

- FOR BENCHMARK 1: RAILROAD SPIKE IN SOUTH FACE OF POWERPOLE LOCATED ON THE WEST SIDE OF PINGREE ROAD APPROXIMATELY 20 FEET SOUTH OF THE CENTERLINE OF AMY DRIVE. ELEVATION=910.66
- FOR BENCHMARK 2: ARROW BOLT ON TOP FLANGE OF HYDRANT LOCATED ON THE WEST SIDE OF TERRA COTTA ROAD APPROXIMATELY 357 FEET NORTH OF THE CENTERLINE OF CRYSTAL LAKE AVENUE. ELEVATION=911.61.

NOTE

- ALGONQUIN TOWNSHIP PROJECT LIMITS ARE FROM SOUTH OF CENTERLINE OF CRYSTAL LAKE AVENUE.
- NUNDA TOWNSHIP PROJECT LIMITS ARE FROM NORTH OF CENTERLINE OF CRYSTAL LAKE AVENUE.



<p>SEC Group, Inc. Engineering Surveying Planning Landscape Architecture McHenry • Yorkville • New Lenox • Chicago www.secgroupinc.com</p>	USER NAME = chr-tnk	DESIGNED - JRM	REVISED -	MCHENRY COUNTY DIVISION OF TRANSPORTATION	ALIGNMENT, TIE AND BENCHMARKS PINGREE ROAD AND TERRA COTTA ROAD			F.A. RTE.	SECTION	COUNTY	TOTAL SHEETS	SHEET NO.
	PLOT SCALE = 1" = 50'	DRAWN - JPA	REVISED -		0116	08-00327-01-CH	MCHENRY	56	4			
	PLOT DATE = 2/13/2009	CHECKED - TCH	REVISED -		CONTRACT NO. 63144							
		DATE - 2/13/09	REVISED -		FED. ROAD DIST. NO. ILLINOIS FED. AID PROJECT							

080154
 C:\0268-06
 080154-11a-01.dgn