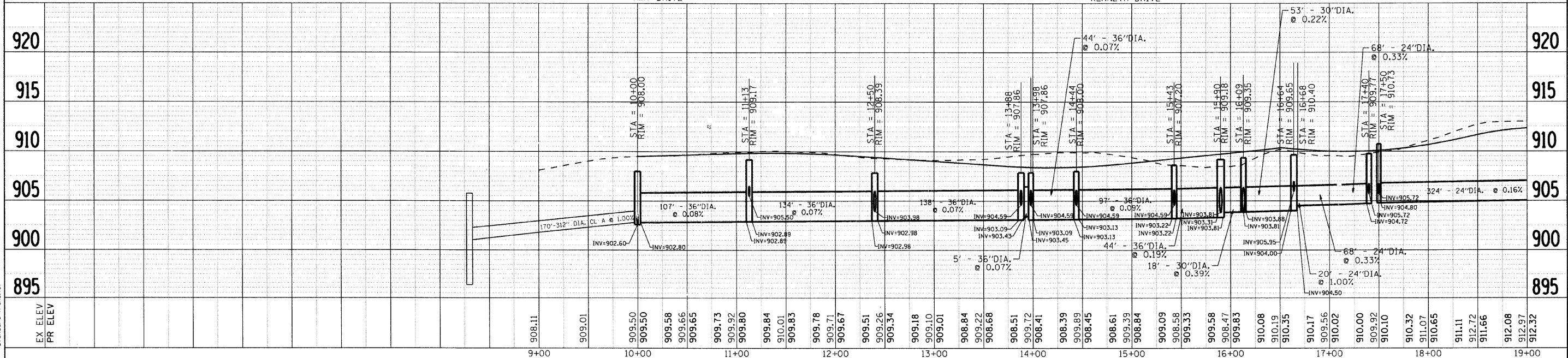
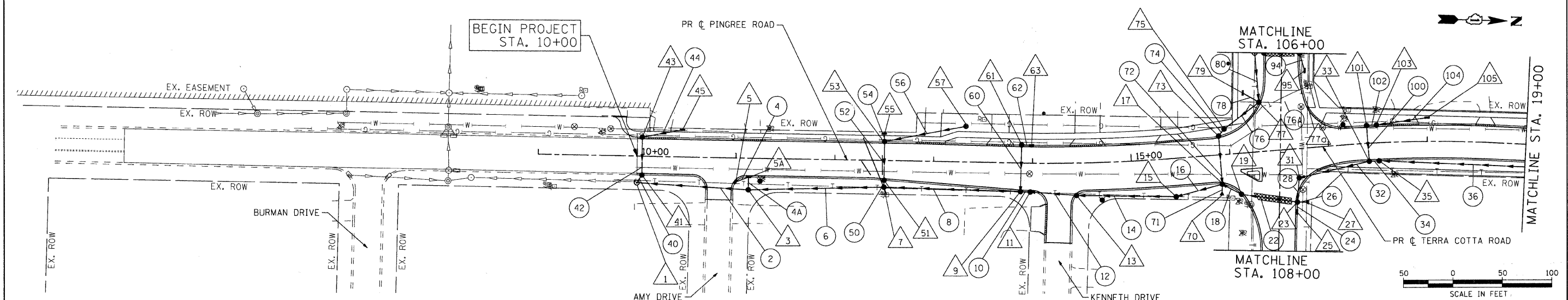
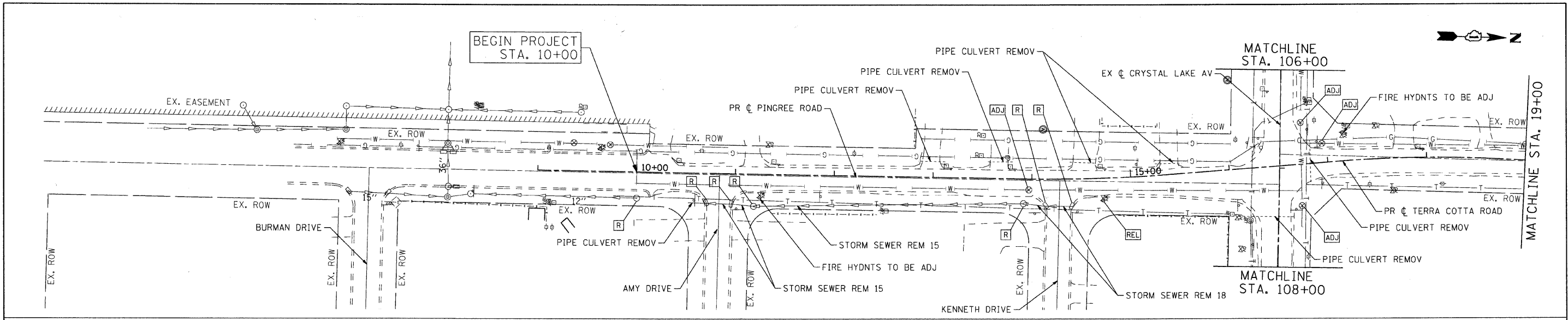


DATE	
BY	
REVISIONS	
PLANNED	
NOTED	
NO. BOOK	
NO.	

DATE	
BY	
REVISIONS	
PROFILING	
NOTED	
NO. BOOK	
NO.	

COMPANY NAME: **SEC Group, Inc.**  
 PROJECT CONTACT: J. MELRUSH  
 CLIENT: ALDRICH AND NUNGA TOWNSHIP  
 DATE PLOTTED: 2/13/2009 10:32:28 AM  
 FILE NAME: 080154-dpp-01.dgn  
 PEN TABLE: Standard Trans.tbl



	USER NAME = charlke FILE NAME = 080154-dpp-01.dgn PLOT SCALE = 1" = 50' PLOT DATE = 2/13/2009	DESIGNED - JJS DRAWN - JJS CHECKED - TCH DATE - 2/13/09	REVISED - REVISED - REVISED - REVISED -	<b>MCHENRY COUNTY</b> <b>DIVISION OF TRANSPORTATION</b>	<b>DRAINAGE AND UTILITY PLAN</b> <b>PINGREE ROAD</b>	F.A. RTE. 0116 SECTION 08-00327-01-CH COUNTY MCHENRY TOTAL SHEETS 56 SHEET NO. 22
	SCALE: 1" = 50' SHEET NO. 1 OF 5 SHEETS STA. BEGIN TO STA. 19+00.00				CONTRACT NO. 63144 ILLINOIS FED. AID PROJECT	